

Mn

LEGEND

Sample number e.g. 82-1-025
Analytical value in p.p.m. (unless otherwise specified) ... e.g. 106

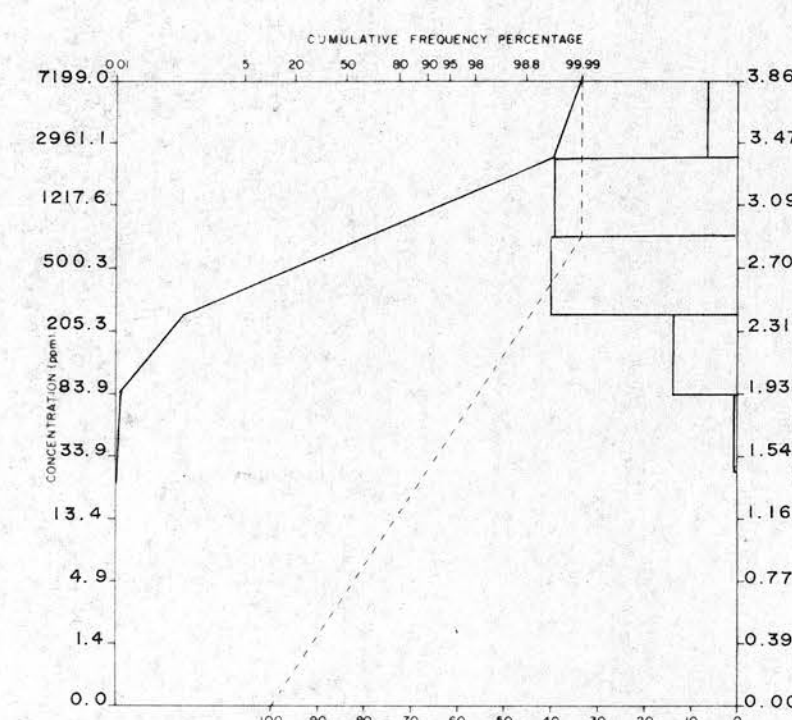
Geochemical Sample Medium

- Stream sediment, sieved
- Stream sediment, unsieved
- Lake sediment
- Heavy mineral / panned concentrate
- Soil
- Rock
- Peat
- Till
- Other

Note: Two (2) sample numbers per sample location indicates duplicate sample site... e.g. 82-1-025,026

N.R. = No Results

HISTOGRAM AND BASIC STATISTICS



Note: Only data within this 1:50,000 sheet is included.

Average: 1025.10
Number of samples: 153
Standard deviation: 87.72
Range: 20.00 - 7200.00
Detection limit: 5 ppm

Sample collection and Geochemistry: P.J. Rogers and M.A. MacDonald
Analyses: Chemex Laboratories Ltd., North Vancouver, B.C.

Sample digestion: Hot HNO_3 - HCl Extraction

Analytical technique: Air-Acetylene AAS

Cartography: P.A. Lombard

TABLAU D'ASSEMBLAGE DU SYSTÈME NATIONAL
DE RÉFÉRENCE CARTOGRAPHIQUE

M	21 H/10	21 H/9
21 H/6	21 H/7	21 H/8
21 H/3	21 H/2	21 H/1

INDEX TO ADDING MAPS OF
THE NATIONAL TOPOGRAPHIC SYSTEM

OPEN FILE
DOSSIER PUBLIC
1253
Geological
Survey
Commission
Géologique
Ottawa

This document was produced
by scanning the original publication.

Ce document est le produit d'une
numérisation par balayage
de la publication originale.

CONTRIBUTION TO CANADA - NOVA SCOTIA
CO-OPERATIVE MINERAL PROGRAM 1981-84

OPEN FILE
OFM 86-20
Nova Scotia
Department of
Mines and Energy

PROVISIONAL MAP
21 H/7 AND PART OF 21 H/6

1:50,000

MANGANESE
CANADA

EDITION 2

CARTE PROVISOIRE
21 H/7 ET PORTION DE 21 H/6

65°00'

49°30'

55°

50°

Joins 21H/10

40°

35°

64°30'

45°30'

Joins 21H/6

20°

BAY OF FUNDY

65°00'

55°

50°

Joins 21H/2

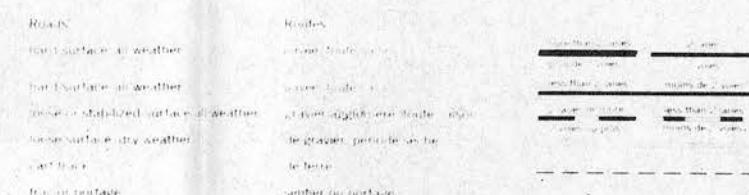
40°

35°

45°15'

64°30'

CAPE CHIGNECTO
CUMBERLAND COUNTY
NOVA SCOTIA
SCALE 1:50,000 ÉCHELLE



CONTRIBUTION TO CANADA - NOVA SCOTIA
CO-OPERATIVE MINERAL PROGRAM 1981-84

CONTRIBUTION DES COOPÉRATIVES
MINÉRIELES À L'ÉNERGIE, AUX MINES ET AUX RESSOURCES
NOVA SCOTIA

Ministère de l'Énergie, des Mines et des Ressources
Département de l'Énergie, des Mines et des Ressources

21 H/7