

This document was produced  
by scanning the original publication.

Ce document est le produit d'une  
numérisation par balayage  
de la publication originale.

Report No. EPGS-DOM.2-85MPA

Vitrinite reflectance (Ro) on the  
dispersed organics in Mobil Tetco  
Petro-Canada Migrant N-20

Vitrinite reflectance (Ro) on the dispersed organics in the Mobil Tetco  
Petro-Canada Migrant N-20

---

"Quotation in full or in part from this report must be with the prior approval of the Eastern Petroleum Geology Subdivision of the Atlantic Geoscience Centre, Dartmouth, Nova Scotia".

G.S.C. Locality No: D170

Location: 43°59'56.13"N, 60°17'18.25"W

R.T. Elevation: 85'

Sample Interval: 980-14660'

Total Depth: 14661'

Water Depth: 45'

Release Date: January 20, 1980

Interval Studied: 1670-14360'

Units: All depths are in feet and referenced to R.T.

Vitrinite reflectance has been determined on 26 samples (Table II) from the Mobil Tetco Petro-Canada Migrant N-20 well, which was classified as a wildcat well and is located on the Scotian Shelf, approximately 180 miles (290km) east of Halifax, Nova Scotia and 9 miles (14km) northwest of Sable Island.

Data acquisition and manipulation for this report utilized the Zeiss Photo-multiplier III Zonax microcomputer system. Improvements in the Zonax software provided the microscope operator with a cumulative histogram which was constantly displayed and updated on the computer monitor as readings were acquired as well as with an essentially instant sorting of the values on a completed sample. Sample preparation was as given in Appendix I. The analysis of the well revealed the thermal maturation intervals given in Table I. Specific maturation levels as set out were based on those by Dow (1977) (see also Report No. EPGs-DOM.9-83MPA).

Table I  
Inferred Thermal Maturation Levels

Determined

Above 5325'	0.25 - 0.4	% Ro	immature
5325-7824'	0.4 - 0.5	% Ro	immature approaching maturity
7825-9866'	0.5 - 0.6	% Ro	marginally mature
9866'	0.6	% Ro	peak of oil generation
14661' T.D.	0.92	% Ro	within oil window

Projected

15587'	1.0	% Ro	peak of wet gas generation
--------	-----	------	----------------------------

Remarks

The sample coverage of vitrinite reflectance data for this well (Figure 1) was very adequate for establishing the rank/depth line. The line plotted through the points has been calculated by the 'least squares' best fit method.

Drill stem tests were carried out at 3 levels (Table III). Of the 8 tests run only DST #2 flowed hydrocarbons. The flow of gas at this interval was 10 MMcf/d (283,165 m<sup>3</sup>/d).

The top of the oil window, as established here, approximately coincides with the top of the Missisauga Formation. Initial maturity of sediments for wet gas generation (0.80%) occurred in the Mic Mac Formation.

This maturation data provides evidence indicating that the thermal regime at Migrant N-20 was suitable for the generation of oil and gas within the drilled section.

References

- Avery, M.P., 1983. Vitrinite reflectance (Ro) on the dispersed organics in Mobil-Texaco-Pex Venture B-43. Report No. EPGs-DOM.9-83MPA, 2 p., 3 figures.
- Dow, W.G., 1977. Kerogen studies and geological interpretations. Journal of Geochemical Exploration, no. 7, p. 79-99.
- Wade, J.A., 1979. Stratigraphic picks (Mobil Tetco Pex Migrant N-20). Report No. EPGs-STRAT.45-79JAW, 1 p. (revised copy).

February 6, 1984

*Mike Avery*

M.P. Avery  
Eastern Petroleum Geology

MPA/nk

c.c. J.S. Bell, E.P.G.S., Dartmouth  
J.A. Wade, E.P.G.S., Dartmouth  
Don Sherwin, COGLA, Ottawa  
Central Technical Files, Ottawa  
E.P.G.S. Files, Dartmouth  
A.E. Jackson, E.P.G.S., Dartmouth  
L. Snowdon, I.S.P.G., Calgary

Table II

Data summary

Seq. #	Sample #	Depth in feet	Mean Ro (SD)	Number of readings	
				Total	Edited
1	K0232A	1670-1790	.27 (.04)	21	18
2	K0232B	2030-2150	.28 (.07)	16	15
3	K0232C	2570-2690	.29 (.04)	25	8
4	K0233A	2930-2960	.35 (.09)	20	5
5	K0233B	3290-3410	.4 (.08)	54	21
6	K0233C	4010-4040	.37 (.06)	63	29
7	K0234A	4670-4700	.37 (.03)	83	70
8	K0234B	5480-5600	.4 (.05)	97	50
9	K0234C	6120-6150	.42 (.05)	99	62
10	K0235A	6490-6520	.43 (.02)	92	18
11	K0235B	6970-7000	.45 (.04)	73	49
12	K0235C	7520-7550	.49 (.05)	99	66
13	K0236A	8150-8180	.5 (.06)	99	73
14	K0236B	8520-8550	.56 (.08)	98	76
15	K0236C	9260-9290	.58 (.06)	79	39
16	K2373A	9640-9670	.66 (.06)	79	49
17	K0237B	10190-10220	.63 (.08)	99	94
18	K0237C	10850-10880	.64 (.06)	99	90
19	K0238A	11240-11270	.63 (.06)	99	89
20	K0238B	11600-11630	.66 (.06)	99	94
21	K0238C	12050-12080	.79 (.08)	99	88
22	K0239A	12440-12560	.77 (.08)	99	86
23	K0239B	12980-13010	.79 (.06)	99	87
24	K0239C	13610-13640	.8 (.09)	99	83
25	K0240A	14060-14090	.86 (.07)	99	87
26	K0240B	14330-14360	.93 (.1)	34	25

Note: All samples are Kerogen Type.

Table III

Drill stem test results (schedule of wells)

DST #	Interval	Comments
1	14,216 - 14,310'	No recovery
2	14,216 - 14,310'	Flowed gas at 10 MMcf/d (283,165 m <sup>3</sup> /d)
3	14,010 - 14,020'	Misrun
4	14,010 - 14,020'	Misrun
5	14,010 - 14,020'	No recovery
6	13,796 - 13,822'	No recovery
7	13,796 - 13,822'	Misrun
8	13,796 - 13,822'	No recovery

Table IV

Geology tops (Wade'79 )

Depth	Top or Interval
in casing	Banquereau
3330'	Wyandot
3764'	Dawson Canyon
4123-4153'	Petral Member
4499'	Logan Canyon
5316-5636'	Sable Member
7645'	Naskapi Member
8030'	Missisauga
11,967'	Mic Mac
14,661'	T.D.

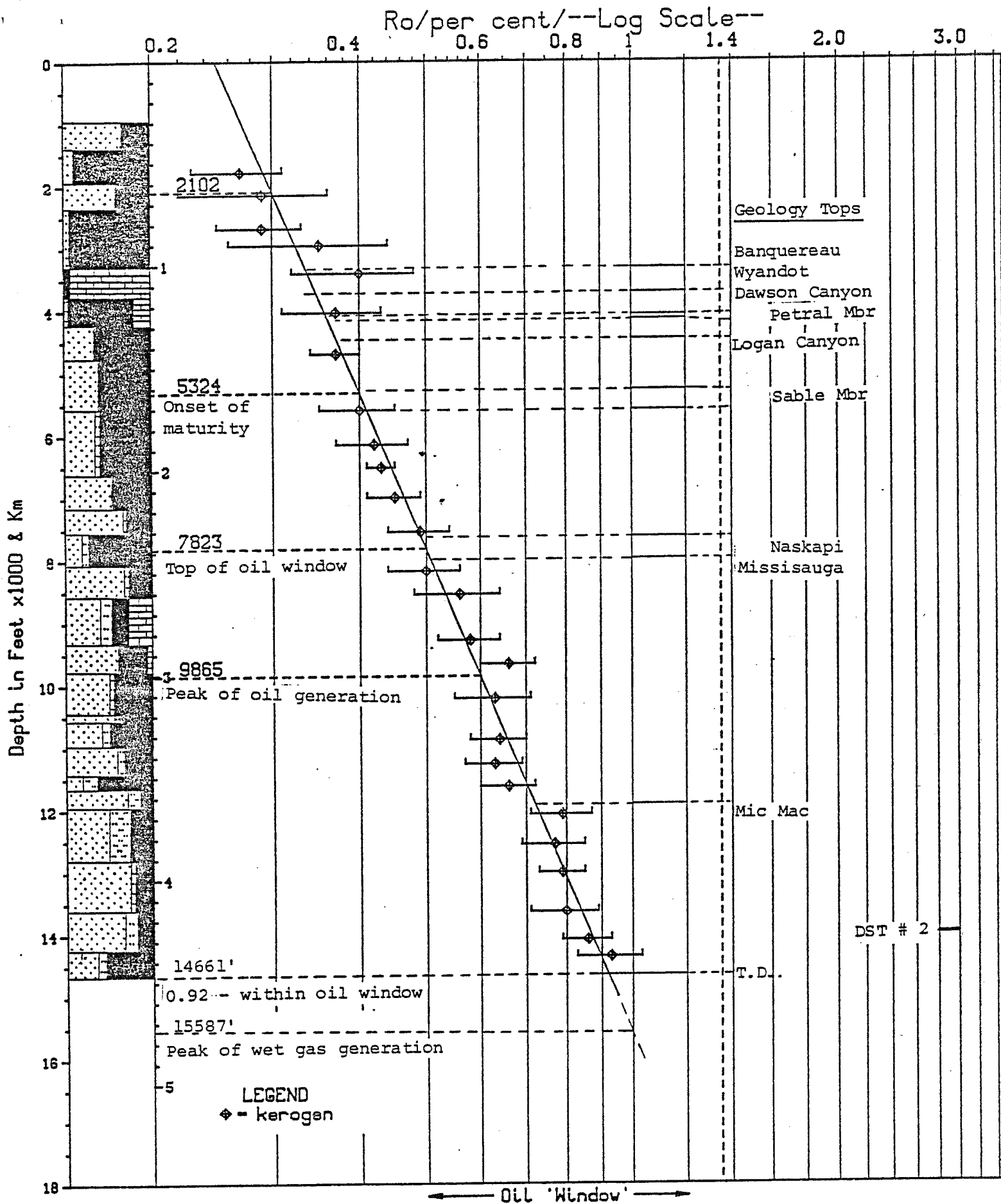


Fig. 1 Migrant N-20

## APPENDIX I

### Sample Preparation Method

#### COGLA Lab preparation

Preliminary Wash

Samples dried in oven

Split: a. all of coarse to Petrology Lab

b.  $\frac{1}{2}$  medium to Palynology Lab

c. rest of medium and all of fine combined for Micropaleo Lab

Split "b" is delivered to Palynology Lab and treated as follows:

#### PALYNOLOGY Lab preparation

20-30 grams placed in 250ml plastic beaker.

Add 10% HCl till reaction ceases (removes carbonates).

Washed (rinsed) 3 times.

Conc. HF overnight (removes silicates).

Washed (rinsed) 3 times.

Heated (60-65°C) conc. HCl (remove fluorides caused by HF).

Washed 3 times.

Then put into 15ml test tube with 4-5ml 4% Alconox.

Differential centrifuge at 1500rpm for 90 sec.

Decant.

Wash 3 times with centrifuging.

Float off organic fraction using 2.0 S.G. Znbr solution.

Centrifuge 1000rpm, 8 min.

Float fraction into second test tube.

Wash 3 times with centrifuging.

Kerogen smear slide made.

Remaining kerogen material delivered to Vitrinite Reflectance Lab.

#### VITRINITE REFLECTANCE Lab preparation

Excess water pipetted off.

Freeze dried.

Mounted using epoxy resin (EPO-TEK 301) in predrilled plastic stubs.

Polished using modified coal petrology polishing methods.

Examined under oil lens at approximately 800x mag'n.

Vitrinite Reflectance Histograms



FILE >> K0232A DESCRIPTION FOLLOWS :  
 DEPTH 1670-1790', MIGRANT N-20, MIKE AVERY, OCT-20-84

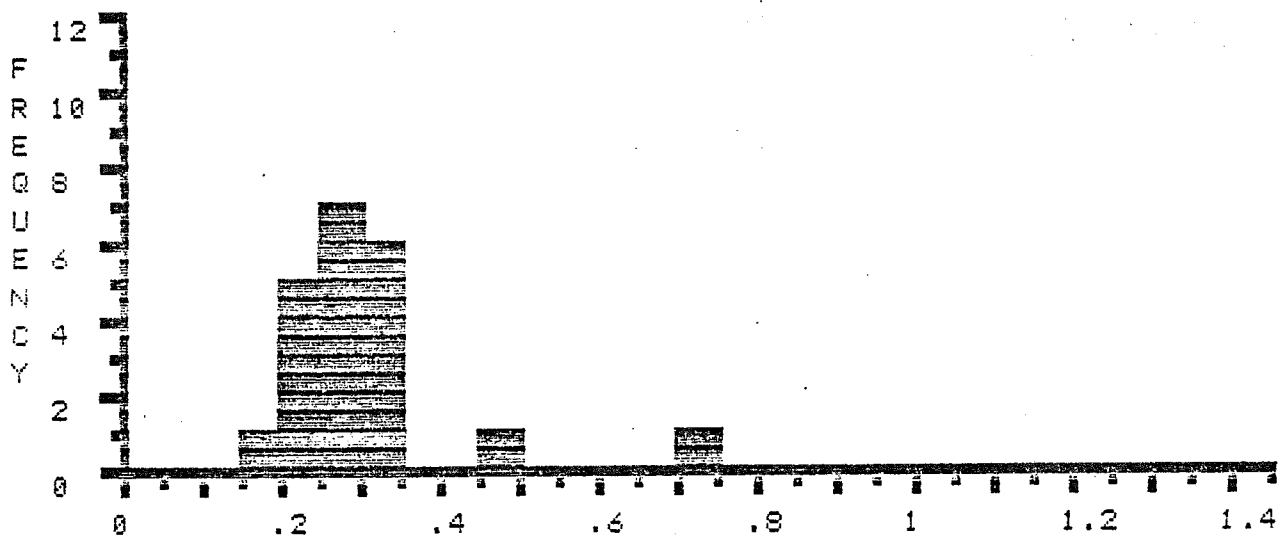
COL>	1	2	3	4	5	6	7	8	9	0
ROW	.15	*.21	*.21	*.22	*.23	*.24	*.25	*.25	*.25	*.26
1	*.29	*.29	*.29	*.3	*.3	*.3	*.3	*.32	*.34	.45
2	.72									

SUM : 6.19 NUMBER : 21 MIN : .15 MAX : .72 MEAN : .29 STAN.DEV.: .11

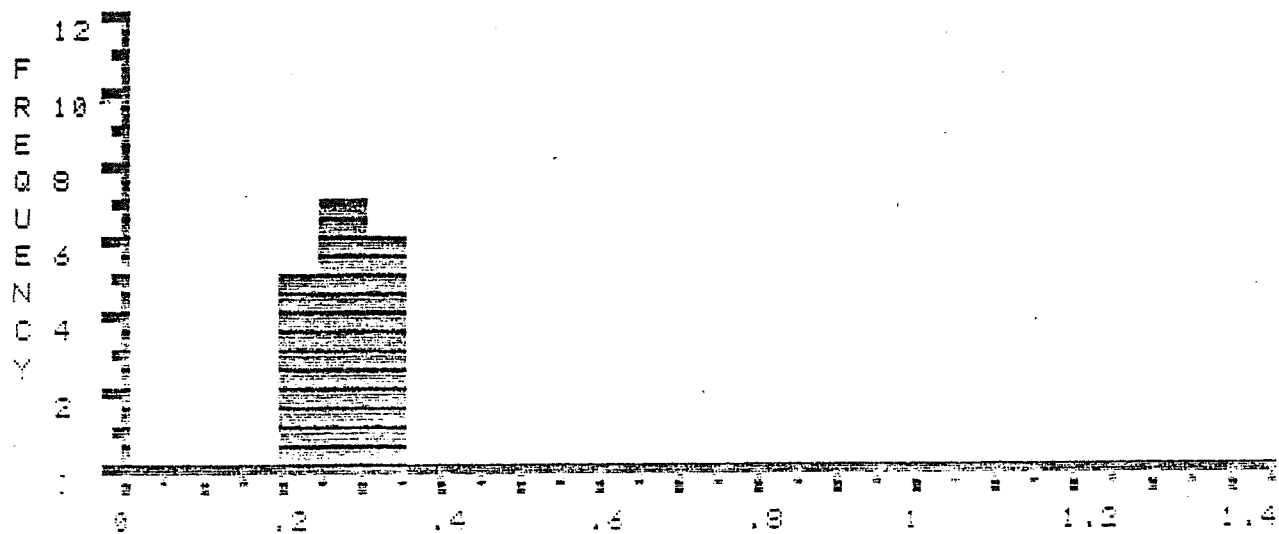
EDITED STATISTICS \* \* \* \* \*

SUM : 4.67 NUMBER : 18 MIN : .21 MAX : .34 MEAN : .27 STAN.DEV.: .04

% R E F L E C T A N C E



% R E F L E C T A N C E \* \* EDITED \* \*



FILE >> K0232B      DESCRIPTION FOLLOWS :  
 DEPTH 2030-2150', MIGRANT N-20, MIKE AVERY, OCT-20-84

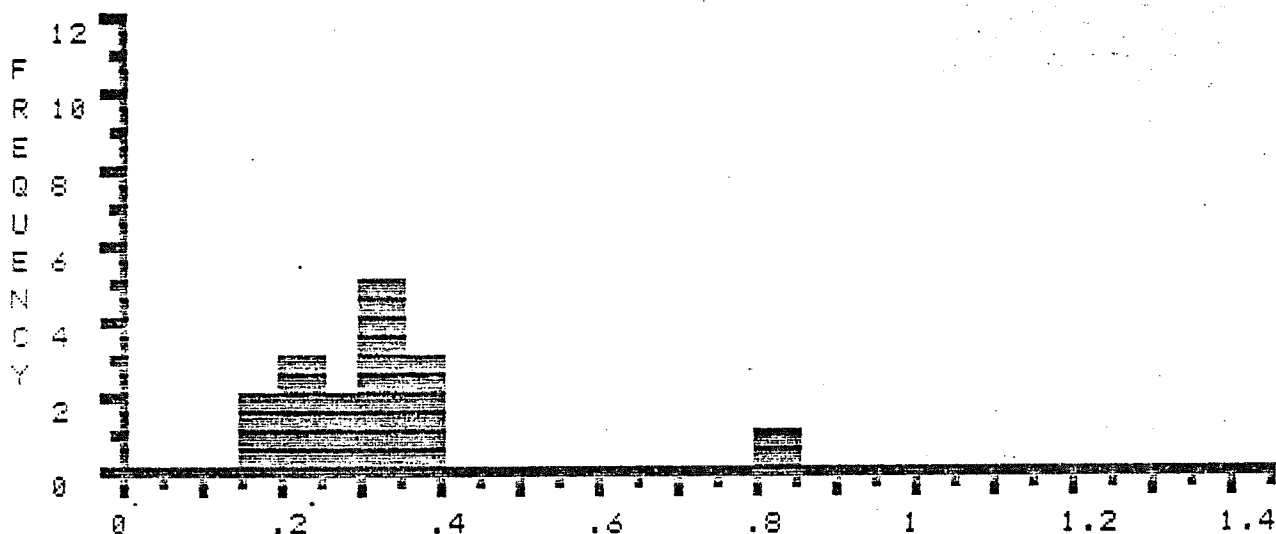
COL)	1	2	3	4	5	6	7	8	9	0
ROW	*.18	*.18	*.2	*.22	*.24	*.27	*.28	*.32	*.32	*.33
1	*.33	*.33	*.35	*.36	*.36	.84				

SUM : 5.11    NUMBER : 16    MIN : .18    MAX : .84    MEAN : .32    STAN.DEV.: .15

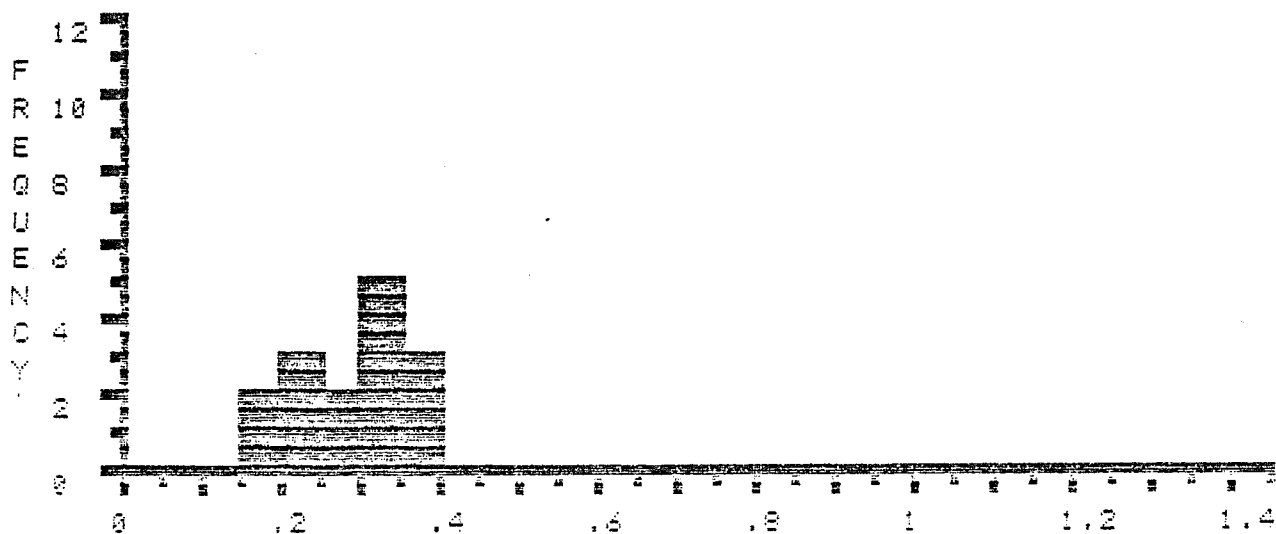
EDITED STATISTICS \* \* \* \* \*

SUM : 4.27    NUMBER : 15    MIN : .18    MAX : .36    MEAN : .28    STAN.DEV.: .07

% R E F L E C T A N C E



% R E F L E C T A N C E \* \* EDITED \* \*



FILE >> K02320 DESCRIPTION FOLLOWS :  
 DEPTH 2570-2690', MIGRANT N-20, MIKE AVERY, OCT-20-84

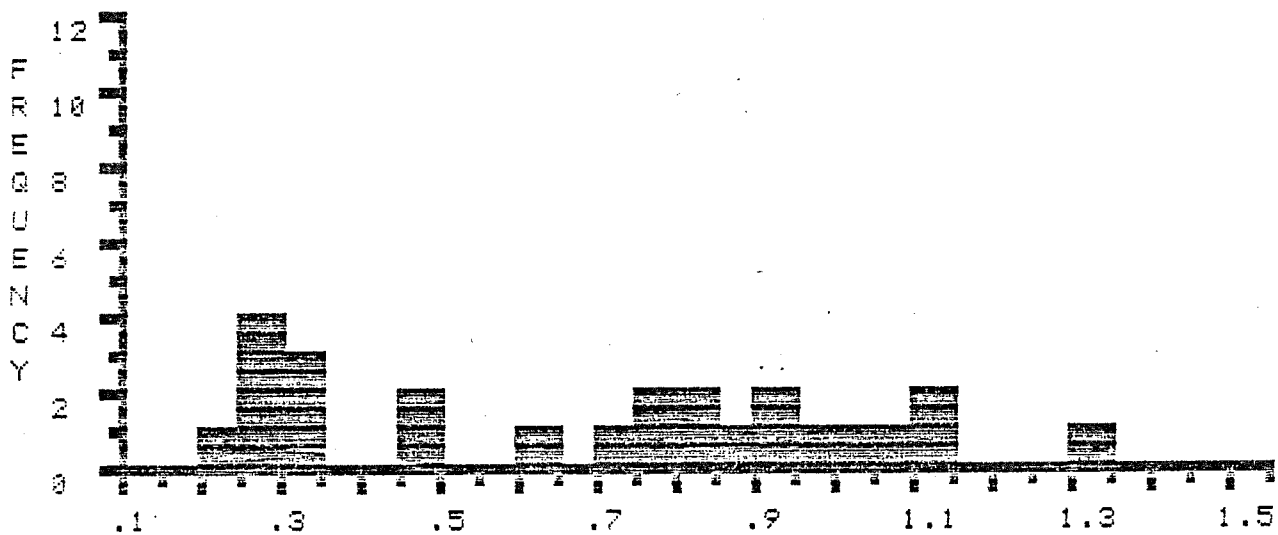
COL>	1	2	3	4	5	6	7	8	9	0
ROW	*.23	*.25	*.28	*.28	*.28	*.31	*.33	*.34	.46	.47
1	.6	.74	.76	.79	.8	.81	.89	.92	.93	.95
2	1.04	1.05	1.12	1.14	1.33					

SUM : 17.1 NUMBER : 25 MIN : .23 MAX : 1.33 MEAN : .68 STAN.DEV.: .34

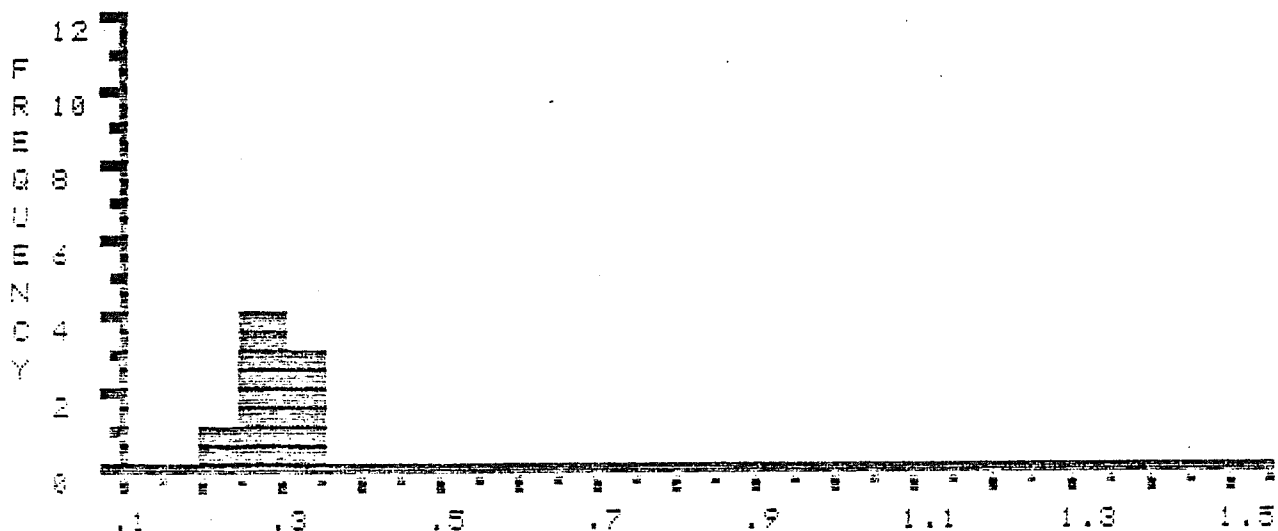
EDITED STATISTICS \* \* \* \* \*

SUM : 2.3 NUMBER : 8 MIN : .23 MAX : .34 MEAN : .29 STAN.DEV.: .04

% R E F L E C T A N C E



% R E F L E C T A N C E \* \* EDITED \* \*



FILE >> K0233A DESCRIPTION FOLLOWS :  
 DEPTH 2930-2960', MIGRANT N-20, MIKE AVERY, OCT-20-84

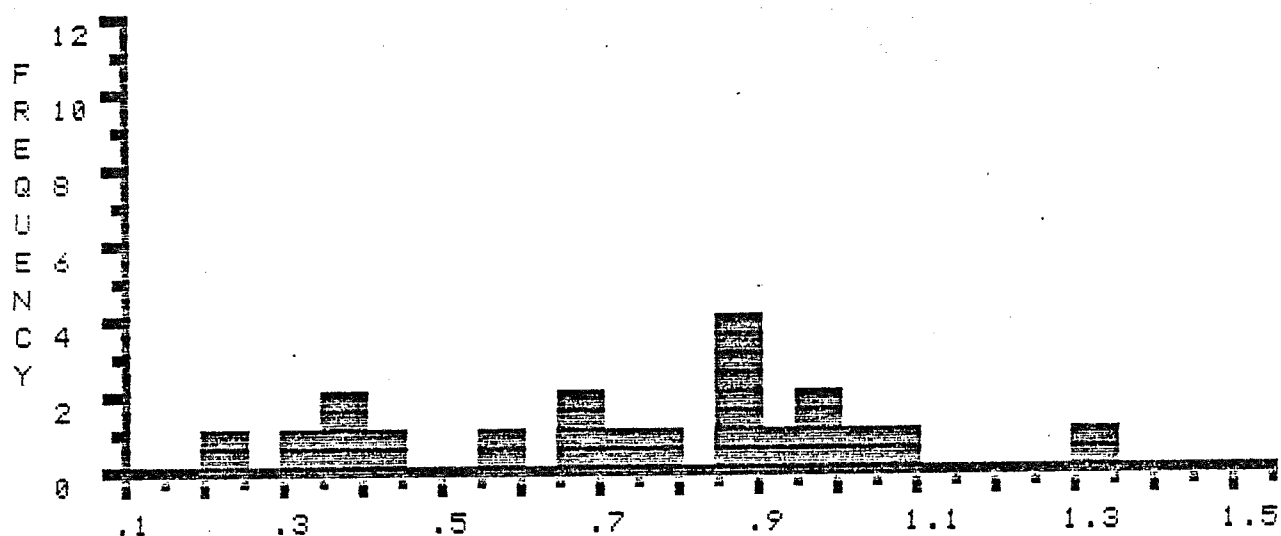
COL>	1	2	3	4	5	6	7	8	9	0
ROW	*.21	*.33	*.37	*.39	*.44	.59	.65	.68	.72	.77
1	.87	.88	.88	.89	.9	.95	.95	1.02	1.08	1.31

SUM : 14.88 NUMBER : 20 MIN : .21 MAX : 1.31 MEAN : .74 STAN.DEV.: .29

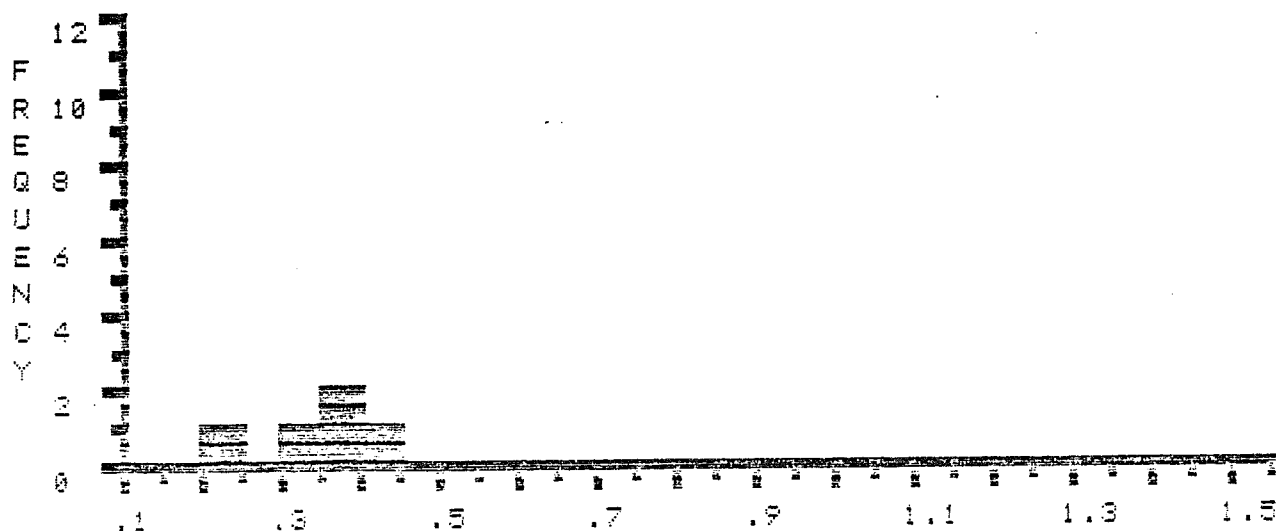
EDITED STATISTICS \* \* \* \* \*

SUM : 1.74 NUMBER : 5 MIN : .21 MAX : .44 MEAN : .35 STAN.DEV.: .09

% R E F L E C T A N C E



% R E F L E C T A N C E \* \* EDITED \* \*



FILE >> K02335 DESCRIPTION FOLLOWS :  
 DEPTH 3290-3410', MIGRANT N-20, MIKE AVERY, OCT-20-84

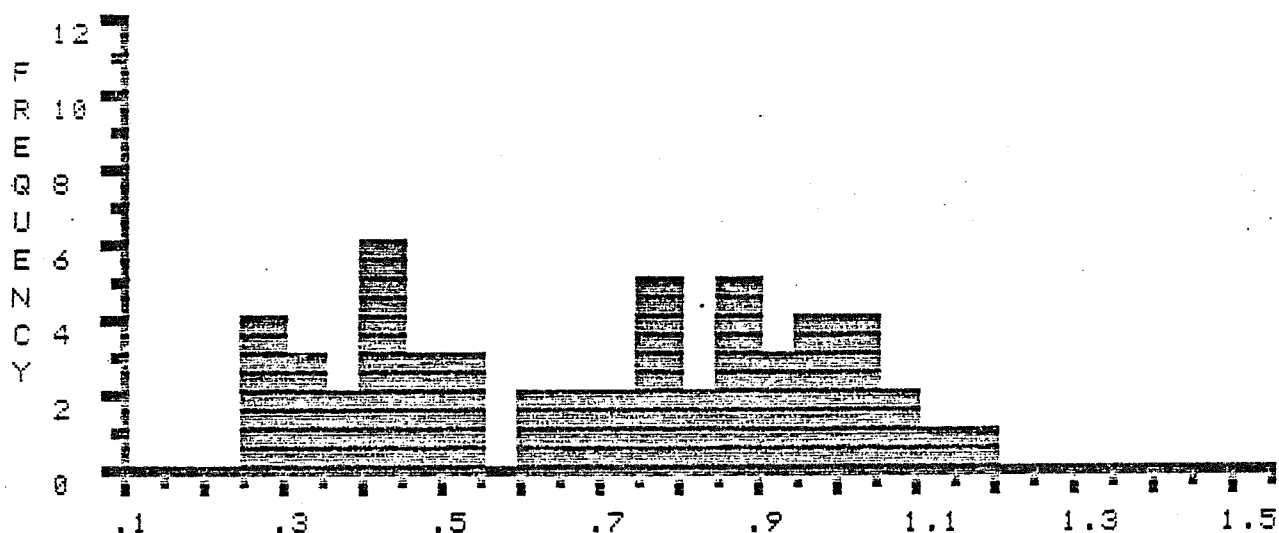
COL>	1	2	3	4	5	6	7	8	9	0
ROW	*.27	*.28	*.29	*.29	*.31	*.33	*.34	*.36	*.37	*.4
1	*.4	*.41	*.44	*.44	*.44	*.47	*.48	*.49	*.5	*.51
2	*.52	.62	.63	.65	.68	.7	.71	.75	.76	.76
3	.76	.77	.82	.84	.86	.88	.89	.89	.89	.92
4	.93	.94	.96	.97	.97	.99	1	1.01	1.03	1.03
5	1.05	1.06	1.14	1.19						

SUM : 37.39 NUMBER : 54 MIN : .27 MAX : 1.19 MEAN : .69 STAN.DEV.: .27

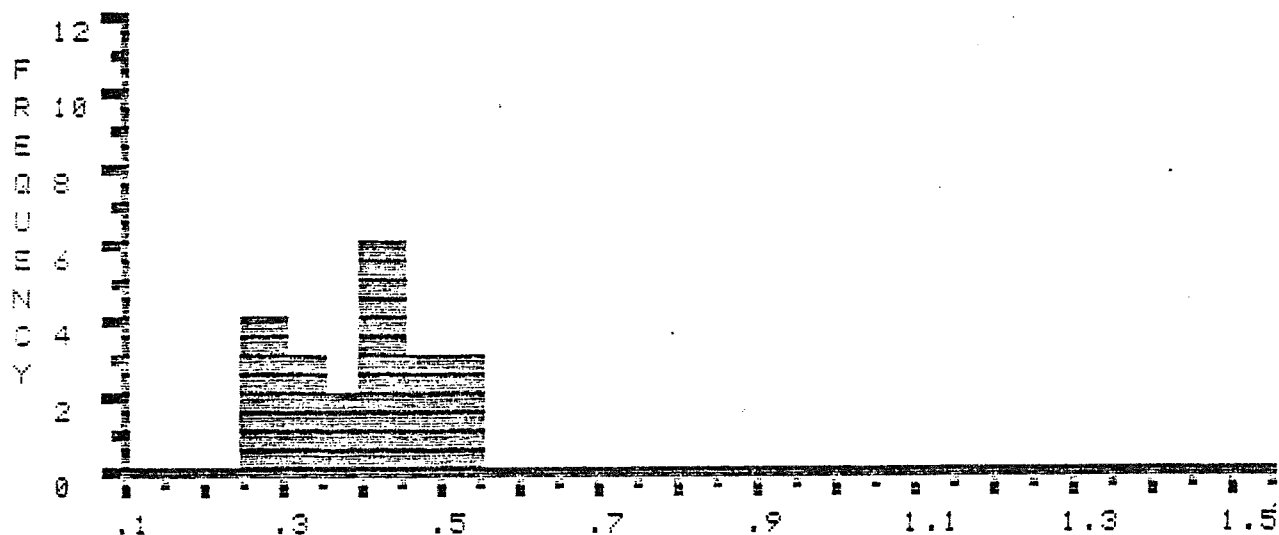
EDITED STATISTICS \* \* \* \* \*

SUM : 8.34 NUMBER : 21 MIN : .27 MAX : .52 MEAN : .4 STAN.DEV.: .08

% R E F L E C T A N C E



% R E F L E C T A N C E \* \* EDITED \* \*



FILE >> K8233C DESCRIPTION FOLLOWS :  
 DEPTH 4018-4040', MIGRANT N-20, MIKE AVERY, OCT-20-84

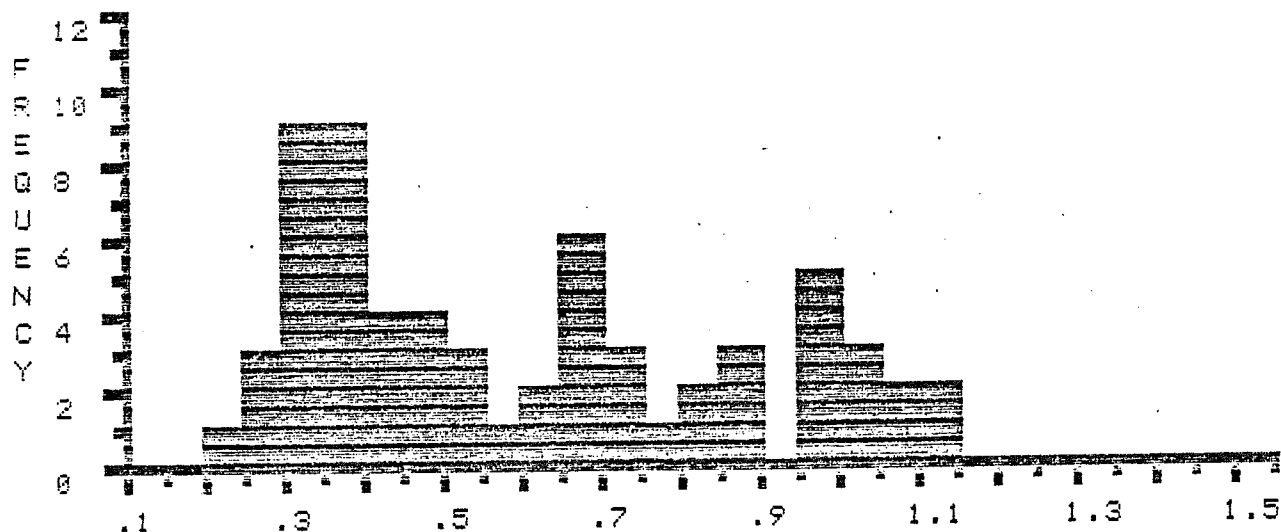
COL	1	2	3	4	5	6	7	8	9	0
ROW	.24	*.28	*.29	*.29	*.31	*.31	*.31	*.31	*.32	*.33
1	*.34	*.34	*.34	*.35	*.35	*.35	*.35	*.36	*.36	*.36
2	*.39	*.39	*.41	*.43	*.44	*.44	*.45	*.46	*.48	*.49
3	.53	.53	.54	.55	.62	.64	.65	.66	.67	.68
4	.69	.69	.7	.72	.74	.77	.8	.8	.86	.86
5	.88	.95	.96	.97	.98	.98	1	1.01	1.04	1.06
6	1.07	1.1	1.14							

SUM : 37.71 NUMBER : 63 MIN : .24 MAX : 1.14 MEAN : .6 STAN.DEV.: .27

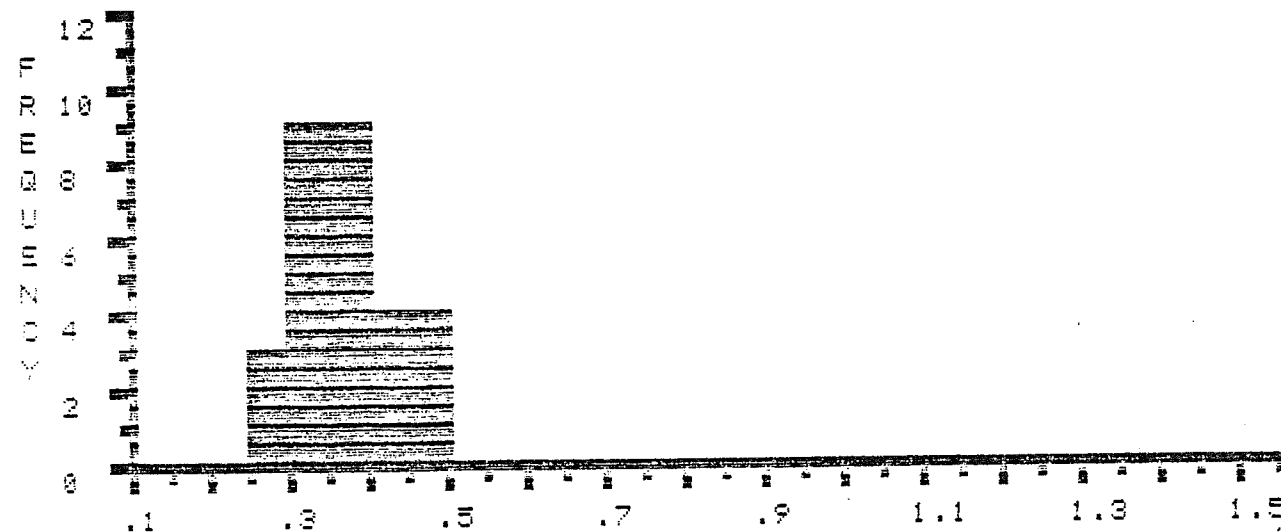
EDITED STATISTICS \* \* \* \* \*

SUM : 10.63 NUMBER : 29 MIN : .28 MAX : .49 MEAN : .37 STAN.DEV.: .06

% R E F L E C T A N C E



% R E F L E C T A N C E \* \* E D I T E D \* \*



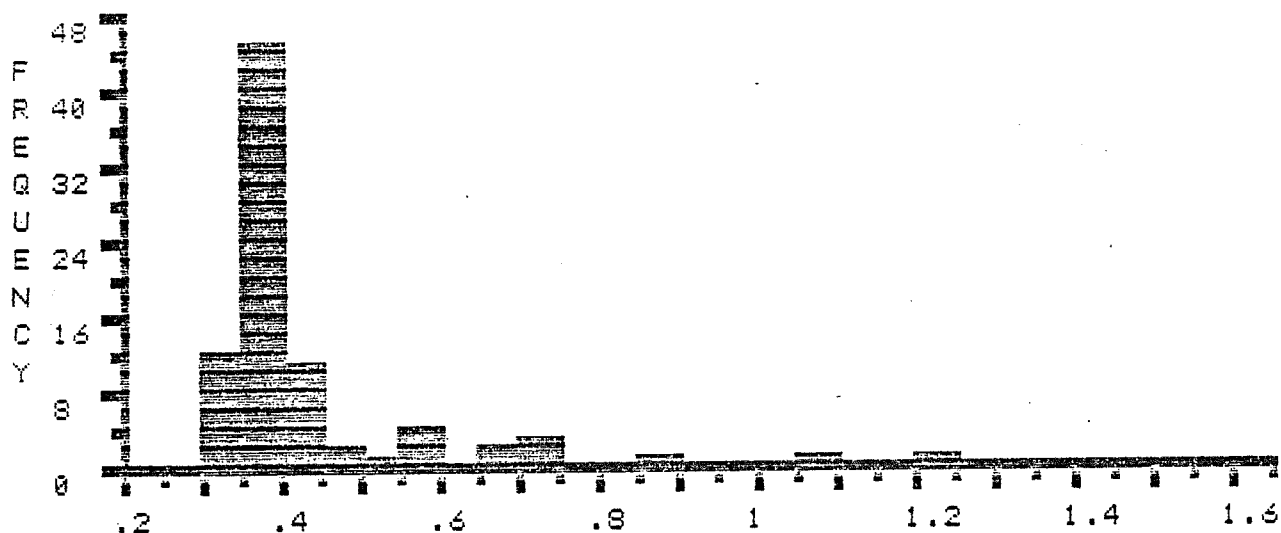
FILE >> K0234A DESCRIPTION FOLLOWS :  
 DEPTH 4670-4700', MIGRANT N-20, MIKE AVERY, OCT-20-84

COL>	1	2	3	4	5	6	7	8	9	0
ROW	*.3	*.3	*.31	*.32	*.32	*.34	*.34	*.34	*.34	*.34
1	*.34	*.34	*.35	*.35	*.35	*.35	*.35	*.35	*.35	*.35
2	*.36	*.36	*.36	*.36	*.36	*.36	*.36	*.36	*.36	*.36
3	*.36	*.36	*.37	*.37	*.37	*.37	*.37	*.37	*.37	*.37
4	*.38	*.38	*.38	*.38	*.38	*.38	*.38	*.39	*.39	*.39
5	*.39	*.39	*.39	*.39	*.39	*.39	*.39	*.4	*.4	*.4
6	*.4	*.41	*.41	*.41	*.42	*.42	*.43	*.44	*.45	*.46
7	.52	.55	.56	.57	.59	.65	.66	.7	.71	.72
8	.85	1.07	1.23							

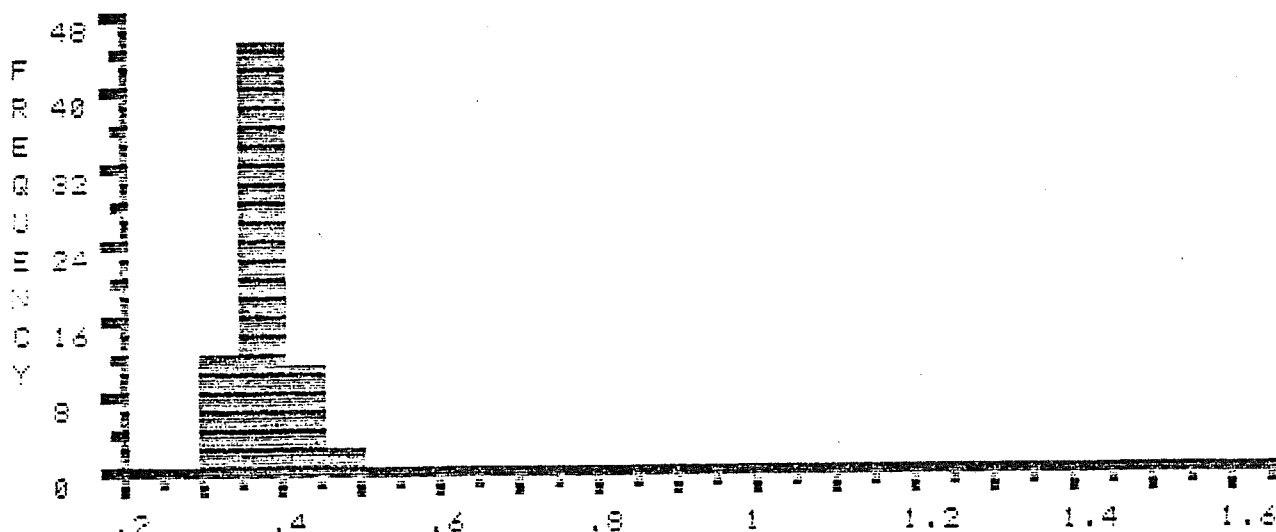
SUM : 35.4 NUMBER : 83 MIN : .3 MAX : 1.23 MEAN : .43 STAN.DEV.: .15

EDITED STATISTICS \* \* \* \* \*  
 SUM : 26.02 NUMBER : 70 MIN : .3 MAX : .46 MEAN : .37 STAN.DEV.: .03

% R E F L E C T A N C E



% R E F L E C T A N C E \* \* E D I T E D \* \*



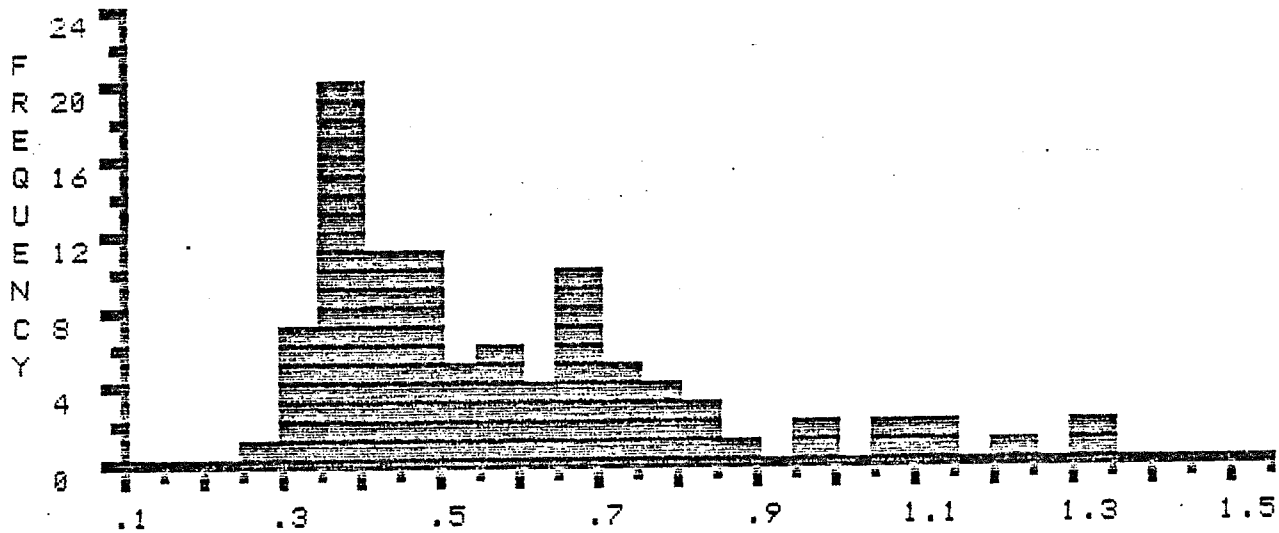
FILE >> K02348 DESCRIPTION FOLLOWS :  
 DEPTH 5480-5600', MIGRANT N-20, MIKE AVERY, OCT-21-84

COL>	1	2	3	4	5	6	7	8	9	0
ROW	.27	*.33	*.33	*.34	*.34	*.34	*.34	*.34	*.35	*.35
1	*.35	*.36	*.36	*.36	*.36	*.36	*.36	*.37	*.37	*.37
2	*.37	*.38	*.38	*.38	*.38	*.38	*.39	*.39	*.4	*.4
3	*.4	*.4	*.41	*.41	*.41	*.42	*.42	*.43	*.43	*.45
4	*.45	*.45	*.45	*.46	*.46	*.47	*.47	*.48	*.48	*.49
5	*.5	.51	.51	.51	.52	.56	.56	.56	.57	.57
6	.59	.62	.62	.63	.64	.65	.65	.65	.65	.67
7	.68	.68	.68	.68	.69	.71	.71	.73	.74	.74
8	.75	.76	.77	.77	.8	.82	.82	.86	.95	.99
9	1.07	1.08	1.11	1.12	1.2	1.3	1.33			

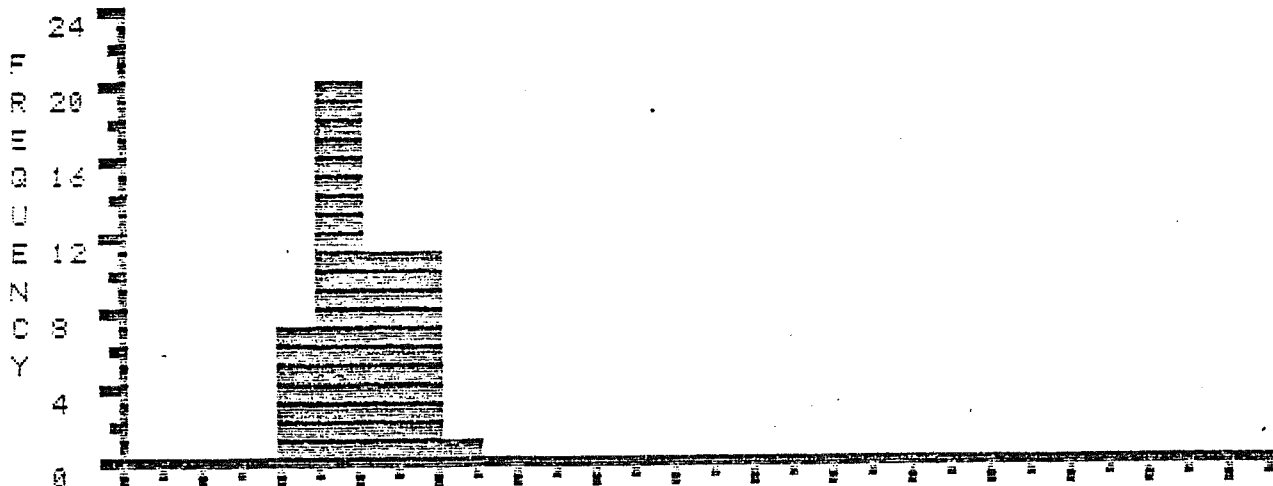
SUM : 54.92 NUMBER : 97 MIN : .27 MAX : 1.33 MEAN : .57 STAN.DEV.: .23

EDITED STATISTICS \* \* \* \* \*  
 SUM : 19.87 NUMBER : 50 MIN : .33 MAX : .5 MEAN : .4 STAN.DEV.: .05

% R E F L E C T A N C E



% R E F L E C T A N C E \* \* EDITED \* \*





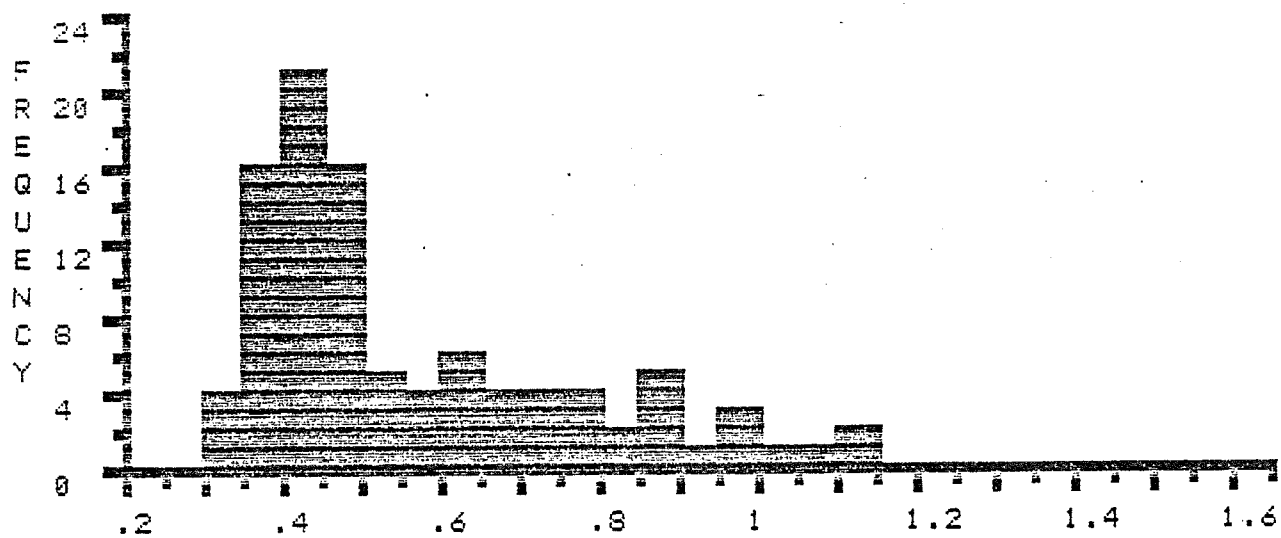
FILE >> K02340 DESCRIPTION FOLLOWS :  
 DEPTH 6120-6150', MIGRANT N-20, MIKE AVERY, OCT-21-84

COL)	1	2	3	4	5	6	7	8	9	0
ROW	*.32	*.33	*.33	*.33	*.35	*.35	*.36	*.36	*.37	*.37
1	*.38	*.38	*.38	*.38	*.38	*.38	*.39	*.39	*.39	*.39
2	*.4	*.4	*.4	*.4	*.4	*.4	*.4	*.41	*.41	*.41
3	*.41	*.42	*.42	*.42	*.42	*.43	*.43	*.43	*.44	*.44
4	*.44	*.45	*.45	*.45	*.46	*.46	*.46	*.46	*.46	*.46
5	*.46	*.47	*.47	*.48	*.48	*.49	*.49	*.5	*.53	*.53
6	*.53	*.54	.56	.56	.59	.59	.6	.6	.6	.61
7	.63	.64	.66	.67	.67	.68	.71	.72	.72	.74
8	.75	.75	.76	.78	.82	.83	.87	.87	.87	.88
9	.88	.94	.95	.97	.98	1.01	1.07	1.1	1.12	

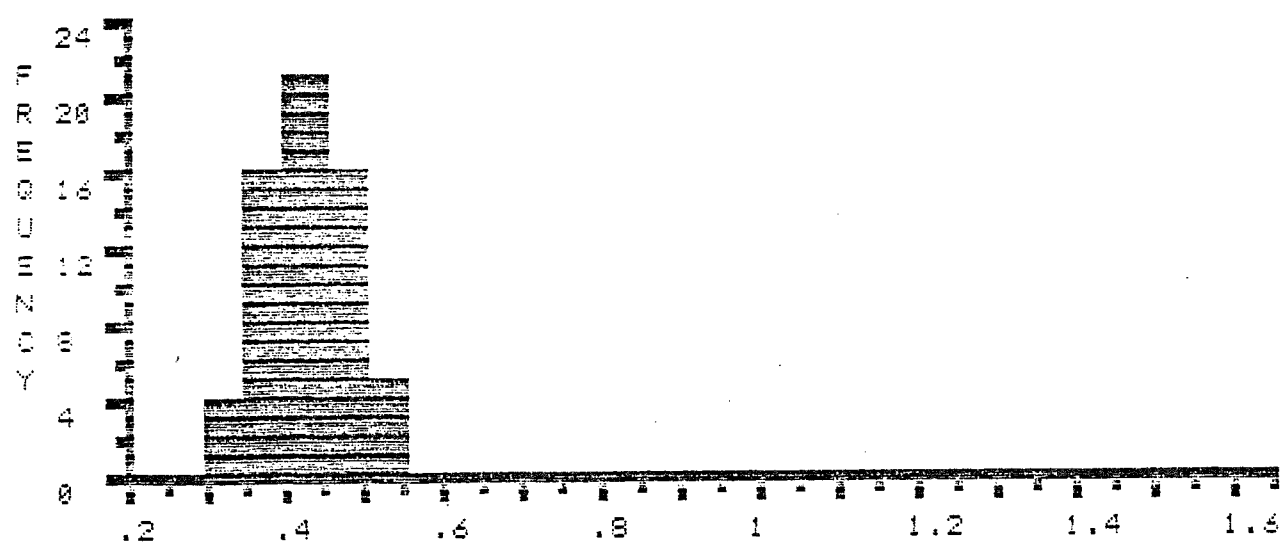
SUM : 54.87 NUMBER : 99 MIN : .32 MAX : 1.12 MEAN : .55 STAN.DEV.: .2

EDITED STATISTICS \* \* \* \* \*  
 SUM : 26.12 NUMBER : 62 MIN : .32 MAX : .54 MEAN : .42 STAN.DEV.: .05

% R E F L E C T A N C E



% R E F L E C T A N C E \* \* E D I T E D \* \*



FILE >> K0235A DESCRIPTION FOLLOWS :  
 DEPTH 6490-6520', MIGRANT N-20, MIKE AVERY, OCT-21-84

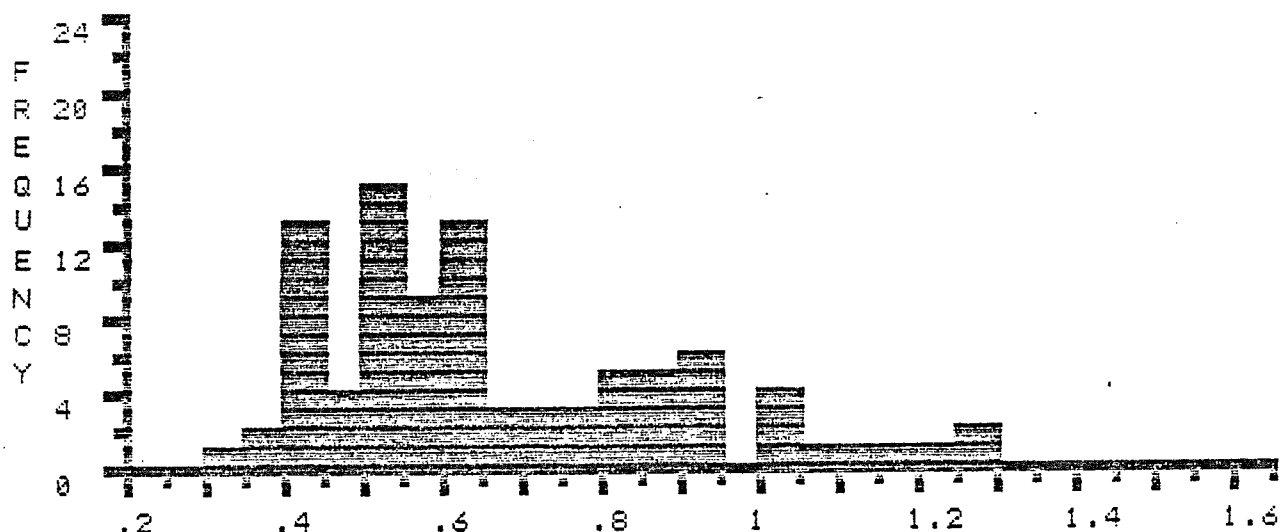
COL>	1	2	3	4	5	6	7	8	9	0
ROW	.33	*.39	*.39	*.4	*.41	*.41	*.41	*.41	*.42	*.42
1	*.43	*.43	*.43	*.43	*.44	*.44	*.46	*.47	*.47	.49
2	.5	.5	.5	.51	.51	.51	.51	.52	.53	.53
3	.54	.54	.54	.54	.54	.56	.56	.57	.58	.58
4	.59	.59	.59	.59	.6	.6	.6	.61	.61	.61
5	.61	.62	.62	.62	.62	.63	.64	.66	.66	.69
6	.7	.7	.74	.77	.78	.78	.8	.81	.82	.82
7	.82	.85	.86	.86	.86	.88	.91	.92	.92	.92
8	.93	.93	1	1.04	1.04	1.04	1.07	1.11	1.17	1.23
9	1.27	1.27								

SUM : 61.13 NUMBER : 92 MIN : .33 MAX : 1.27 MEAN : .66 STAN.DEV.: .22

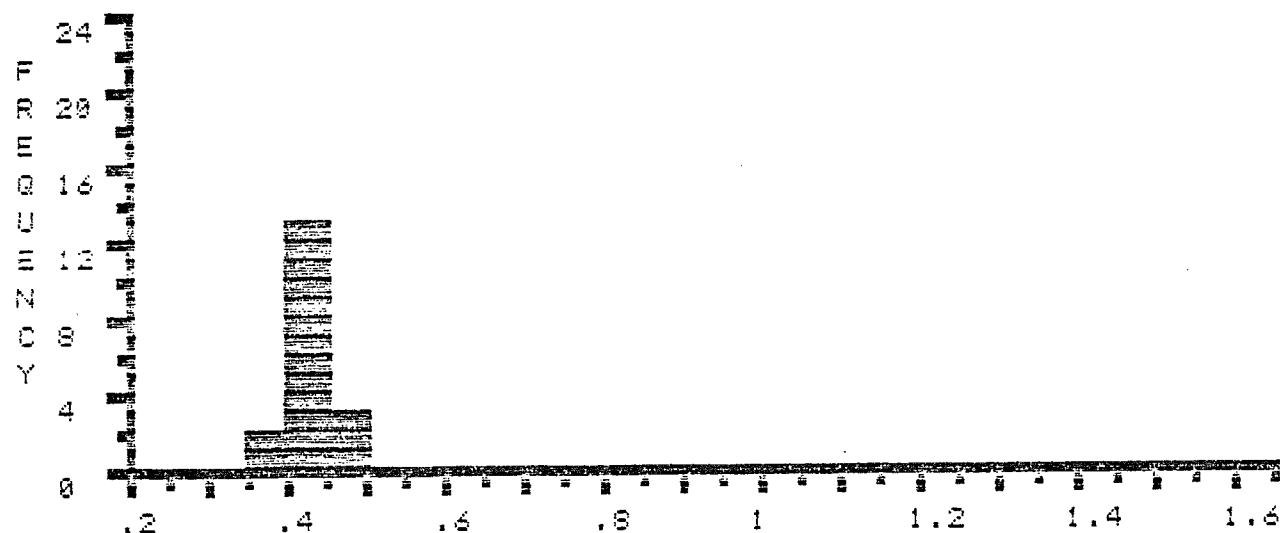
EDITED STATISTICS \* \* \* \* \*

SUM : 7.66 NUMBER : 18 MIN : .39 MAX : .47 MEAN : .43 STAN.DEV.: .02

% R E F L E C T A N C E



% R E F L E C T A N C E \* \* EDITED \* \*



FILE >> K02358 DESCRIPTION FOLLOWS :  
 DEPTH 6970-7000', MIGRANT N-20, MIKE AVERY, OCT-21-84

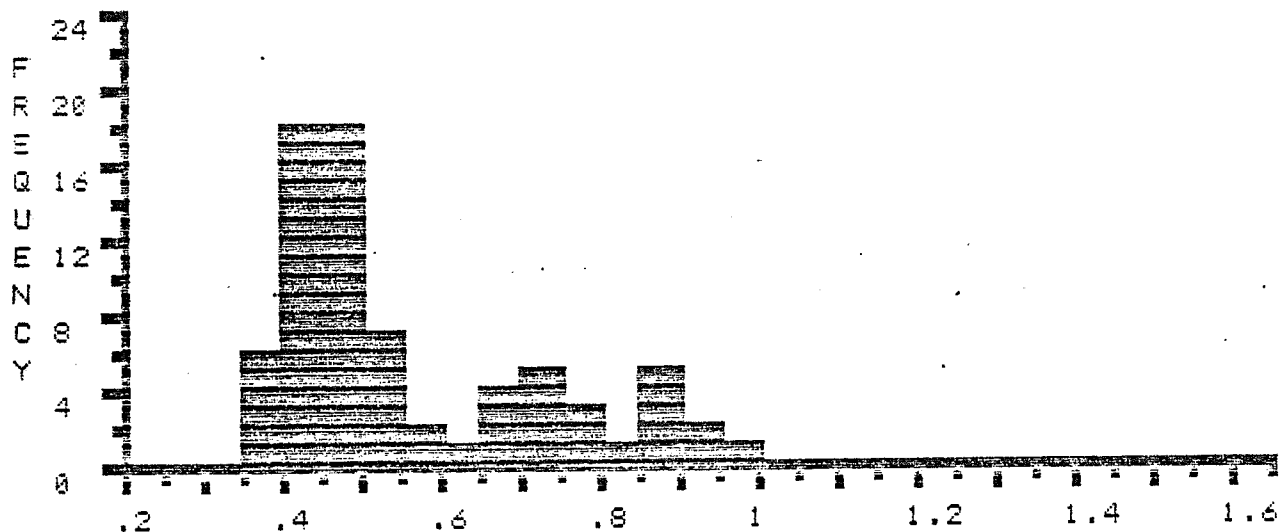
COL	1	2	3	4	5	6	7	8	9	0
ROW	*.37	*.38	*.38	*.39	*.39	*.39	*.4	*.4	*.4	*.4
1	*.4	*.41	*.41	*.42	*.43	*.43	*.43	*.43	*.44	*.44
2	*.44	*.44	*.44	*.44	*.45	*.46	*.46	*.46	*.46	*.46
3	*.47	*.47	*.47	*.47	*.47	*.47	*.48	*.48	*.48	*.49
4	*.49	*.49	*.5	*.5	*.51	*.52	*.52	*.52	*.54	.58
5	.58	.64	.66	.66	.68	.69	.7	.71	.72	.73
6	.74	.76	.77	.78	.81	.85	.85	.86	.88	.89
7	.91	.94	.97							

SUM : 40.35 NUMBER : 73 MIN : .37 MAX : .97 MEAN : .55 STAN.DEV.: .17

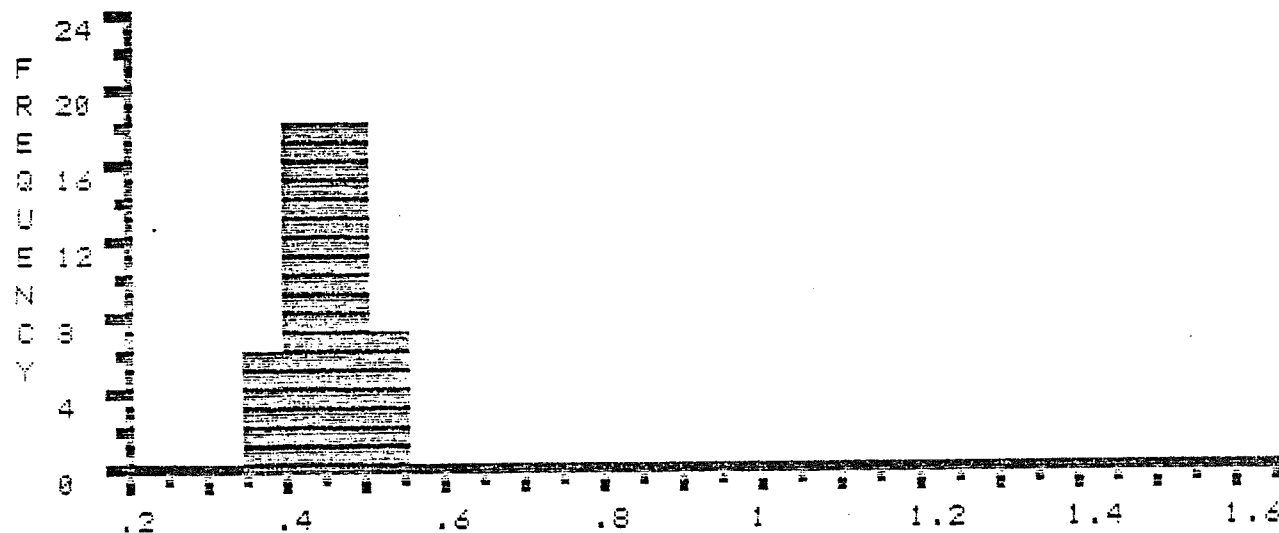
EDITED STATISTICS \* \* \* \* \*

SUM : 21.99 NUMBER : 49 MIN : .37 MAX : .54 MEAN : .45 STAN.DEV.: .04

% R E F L E C T A N C E



% R E F L E C T A N C E \* \* EDITED \* \*



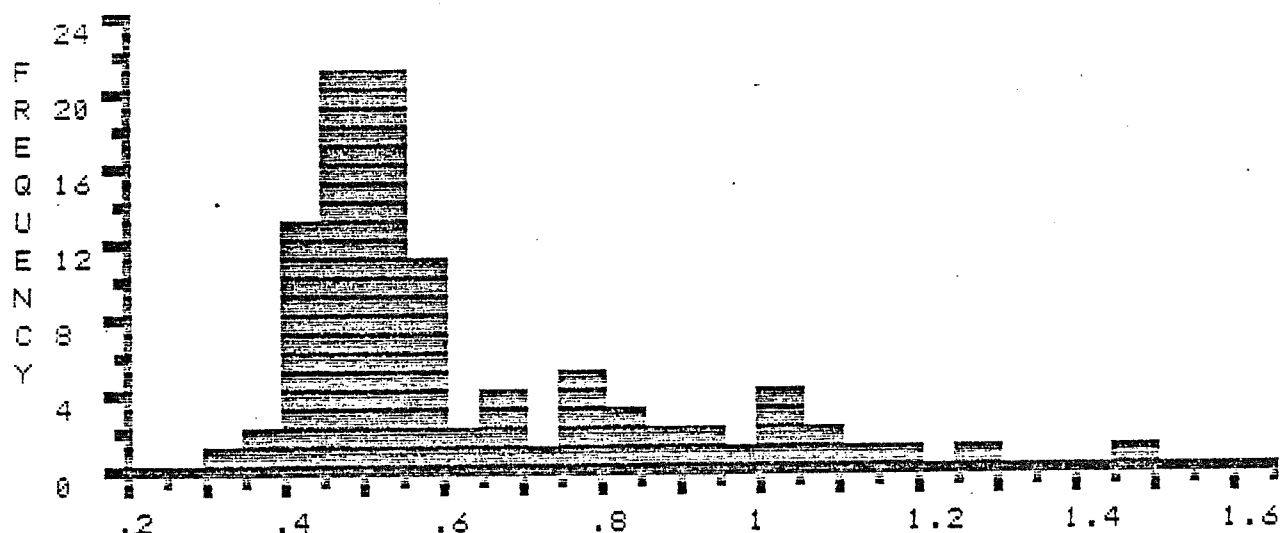
FILE >> K0235C DESCRIPTION FOLLOWS :  
 DEPTH 7520-7550', MIGRANT N-20, MIKE AVERY, OCT-24-84

COL>	1	2	3	4	5	6	7	8	9	0
ROW	.3	.35	.35	*.4	*.41	*.42	*.42	*.42	*.42	*.42
1	*.42	*.43	*.44	*.44	*.44	*.44	*.45	*.45	*.45	*.45
2	*.45	*.45	*.46	*.46	*.46	*.46	*.47	*.47	*.48	*.48
3	*.48	*.48	*.48	*.49	*.49	*.49	*.49	*.5	*.5	*.5
4	*.5	*.51	*.51	*.52	*.52	*.52	*.52	*.52	*.53	*.53
5	*.53	*.53	*.53	*.54	*.54	*.54	*.54	*.54	*.55	*.55
6	*.55	*.55	*.56	*.57	*.57	*.58	*.58	*.58	*.59	.62
7	.64	.65	.65	.68	.68	.71	.75	.77	.78	.78
8	.79	.8	.82	.84	.85	.87	.93	.94	.98	1
9	1	1.04	1.04	1.07	1.09	1.14	1.19	1.25	1.47	

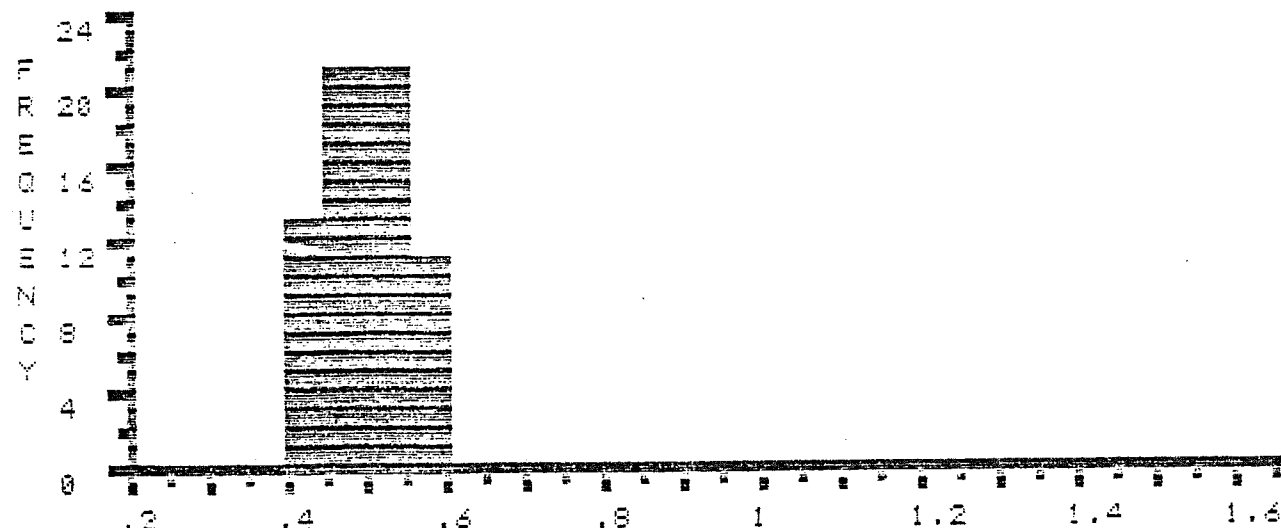
SUM : 60.38 NUMBER : 99 MIN : .3 MAX : 1.47 MEAN : .61 STAN.DEV.: .22

EDITED STATISTICS \* \* \* \* \*  
 SUM : 32.56 NUMBER : 66 MIN : .4 MAX : .59 MEAN : .49 STAN.DEV.: .05

% R E F L E C T A N C E



% R E F L E C T A N C E \* \* E D I T E D \* \*



FILE >> K0296A DESCRIPTION FOLLOWS :  
 DEPTH 8150-8180', MIGRANT N-20, MIKE AVERY, OCT-24-84

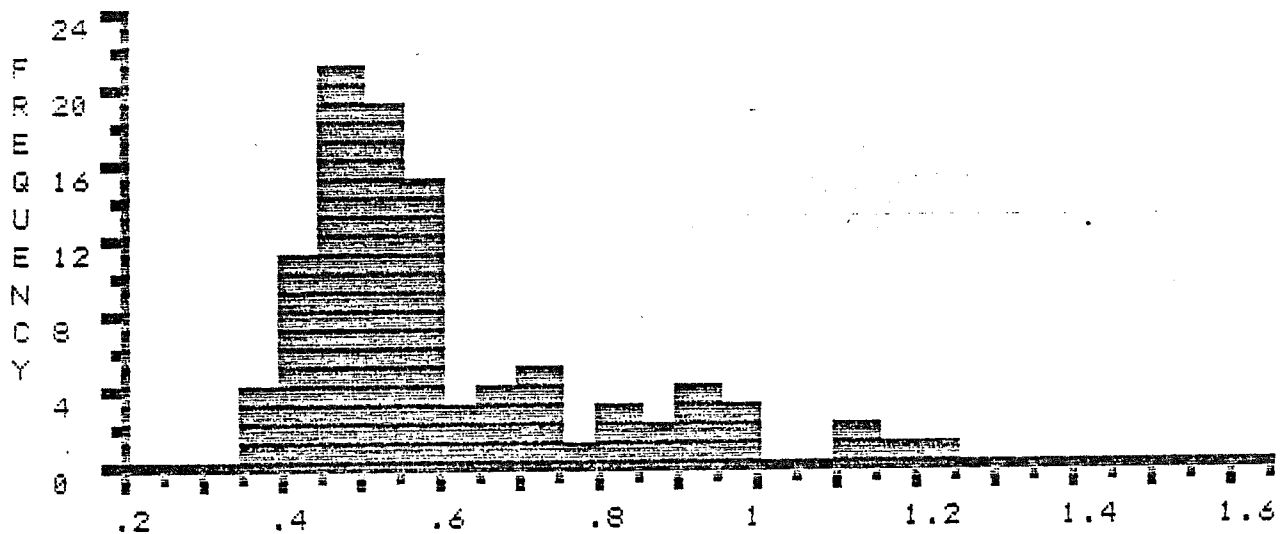
COL>	1	2	3	4	5	6	7	8	9	0
ROW	*.37	*.38	*.39	*.39	*.4	*.4	*.42	*.42	*.42	*.43
1	*.43	*.44	*.44	*.44	*.44	*.45	*.45	*.45	*.45	*.45
2	*.46	*.46	*.47	*.47	*.47	*.47	*.47	*.47	*.48	*.48
3	*.49	*.49	*.49	*.49	*.49	*.49	*.5	*.5	*.5	*.5
4	*.5	*.51	*.52	*.52	*.52	*.52	*.52	*.52	*.53	*.53
5	*.53	*.53	*.54	*.54	*.54	*.55	*.55	*.55	*.56	*.56
6	*.56	*.56	*.57	*.57	*.57	*.58	*.58	*.59	*.59	*.59
7	*.6	*.62	*.63	.65	.66	.67	.68	.71	.71	.73
8	.73	.73	.79	.8	.81	.83	.85	.88	.92	.92
9	.93	.93	.95	.97	.99	1.12	1.13	1.18	1.21	

SUM : 58.83 NUMBER : 99 MIN : .37 MAX : 1.21 MEAN : .59 STAN.DEV.: .19

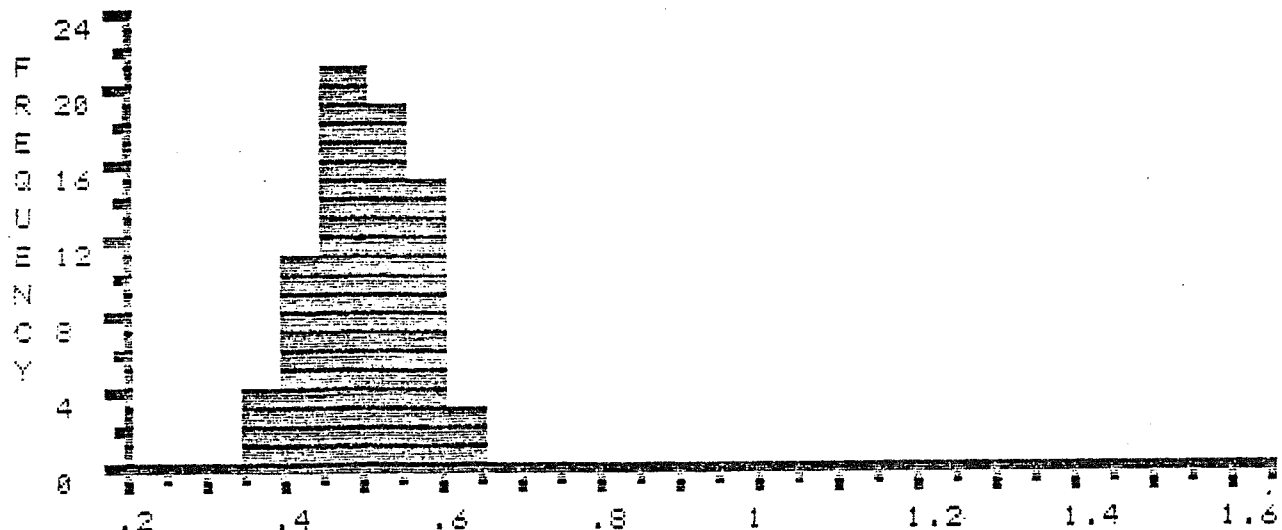
EDITED STATISTICS \* \* \* \* \*

SUM : 36.35 NUMBER : 73 MIN : .37 MAX : .63 MEAN : .5 STAN.DEV.: .06

% R E F L E C T A N C E



% R E F L E C T A N C E \* \* EDITED \* \*



FILE >> K0236B DESCRIPTION FOLLOWS :  
 DEPTH 8520-8550', MIGRANT N-20, MIKE AVERY, OCT-24-84

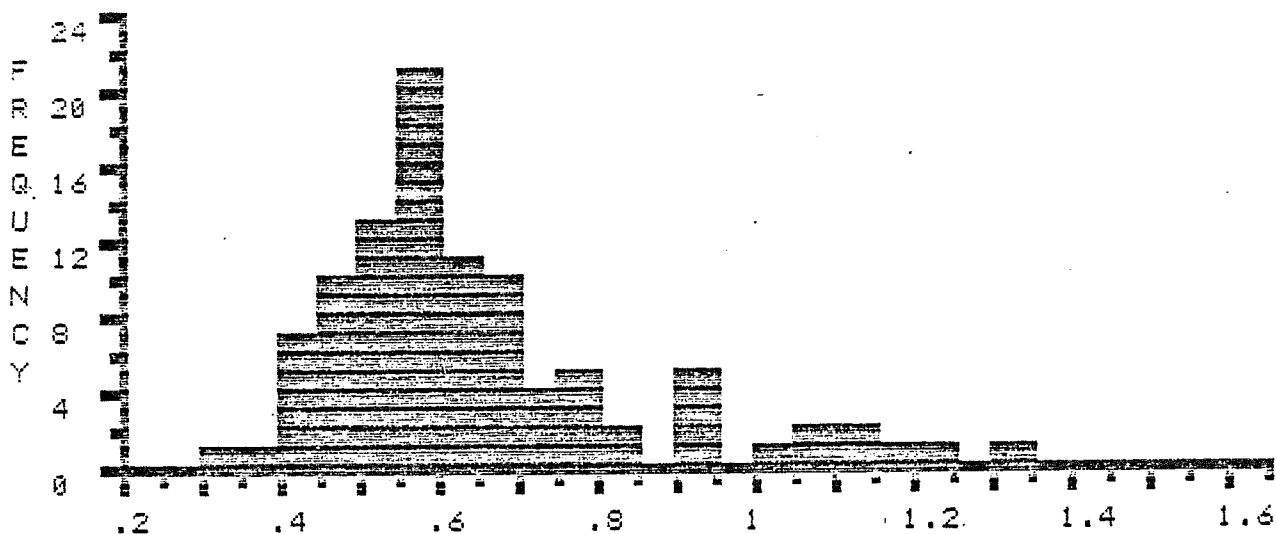
COL>	1	2	3	4	5	6	7	8	9	0
ROW	.34	.36	*.41	*.41	*.42	*.42	*.43	*.43	*.44	*.45
1	*.45	*.45	*.48	*.48	*.48	*.48	*.48	*.49	*.49	*.5
2	*.5	*.5	*.5	*.5	*.5	*.51	*.52	*.53	*.53	*.53
3	*.53	*.54	*.55	*.55	*.55	*.55	*.55	*.56	*.56	*.56
4	*.56	*.56	*.56	*.57	*.57	*.57	*.58	*.58	*.58	*.59
5	*.59	*.59	*.59	*.6	*.6	*.61	*.61	*.61	*.62	*.63
6	*.64	*.64	*.64	*.64	*.65	*.65	*.66	*.66	*.66	*.66
7	*.67	*.68	*.69	*.69	*.7	*.7	*.72	*.73	.76	.76
8	.78	.79	.79	.8	.8	.9	.9	.91	.92	.93
9	1.03	1.07	1.09	1.11	1.13	1.19	1.23	1.33		

SUM : 62.58 NUMBER : 98 MIN : .34 MAX : 1.33 MEAN : .64 STAN.DEV.: .2

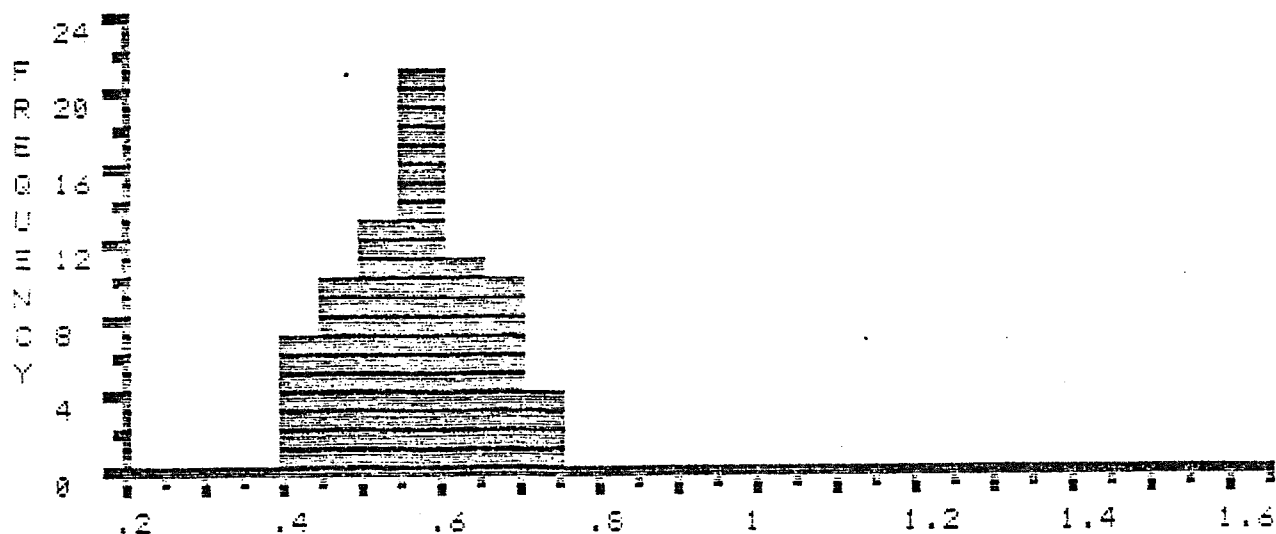
EDITED STATISTICS \* \* \* \* \*

SUM : 42.66 NUMBER : 76 MIN : .41 MAX : .73 MEAN : .56 STAN.DEV.: .08

% R E F L E C T A N C E



% R E F L E C T A N C E \* \* EDITED \* \*



FILE >> K02360 DESCRIPTION FOLLOWS :  
 DEPTH 9260-9290', MIGRANT N-20, MIKE AVERY, OCT-25-84

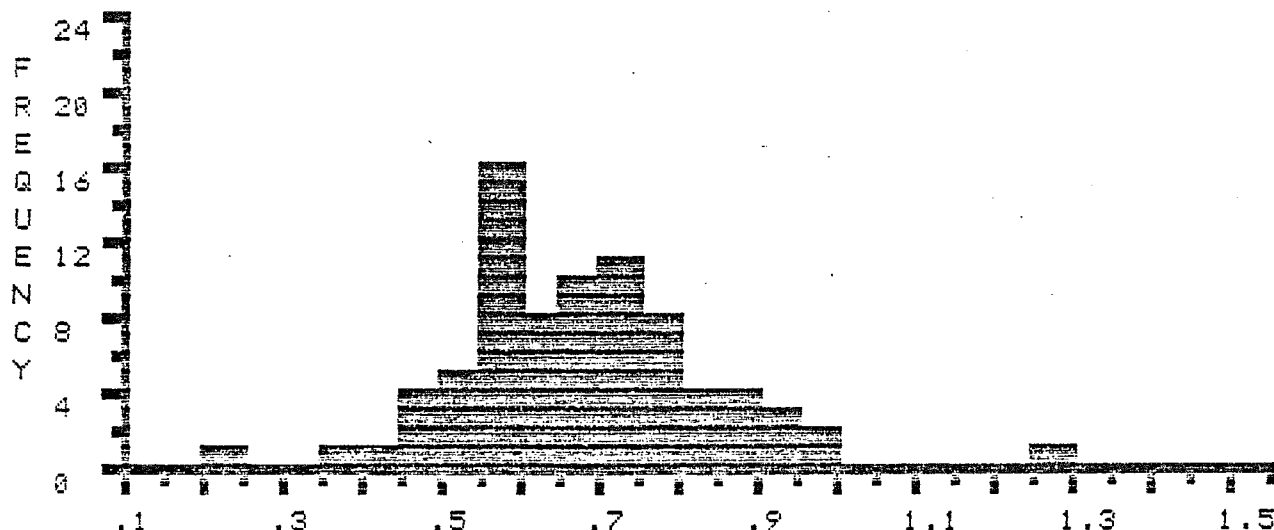
COL>	1	2	3	4	5	6	7	8	9	0
ROW	.24	.35	.4	*.45	*.46	*.47	*.49	*.52	*.53	*.53
1	*.54	*.54	*.55	*.55	*.55	*.55	*.56	*.56	*.56	*.56
2	*.56	*.56	*.58	*.58	*.58	*.58	*.58	*.59	*.6	*.6
3	*.61	*.63	*.63	*.63	*.64	*.64	*.66	*.66	*.67	*.67
4	*.68	*.68	.69	.69	.69	.69	.7	.7	.7	.7
5	.71	.72	.72	.72	.72	.72	.73	.75	.75	.76
6	.77	.78	.78	.78	.79	.8	.81	.82	.84	.85
7	.86	.88	.89	.9	.9	.93	.99	.99	1.25	

SUM : 53.04 NUMBER : 79 MIN : .24 MAX : 1.25 MEAN : .67 STAN.DEV.: .16

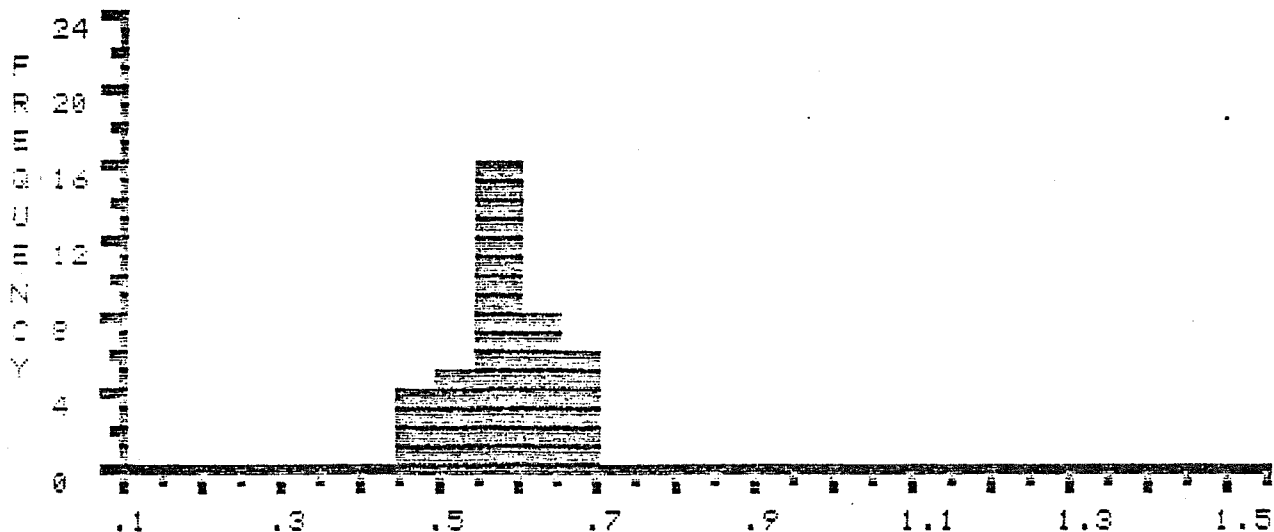
EDITED STATISTICS \* \* \* \* \*

SUM : 22.58 NUMBER : 39 MIN : .45 MAX : .68 MEAN : .58 STAN.DEV.: .06

% R E F L E C T A N C E



% R E F L E C T A N C E \* \* EDITED \* \*



FILE >> K0237A DESCRIPTION FOLLOWS :  
 DEPTH 9640-9670', MIGRANT N-20, MIKE AVERY, OCT-25-84

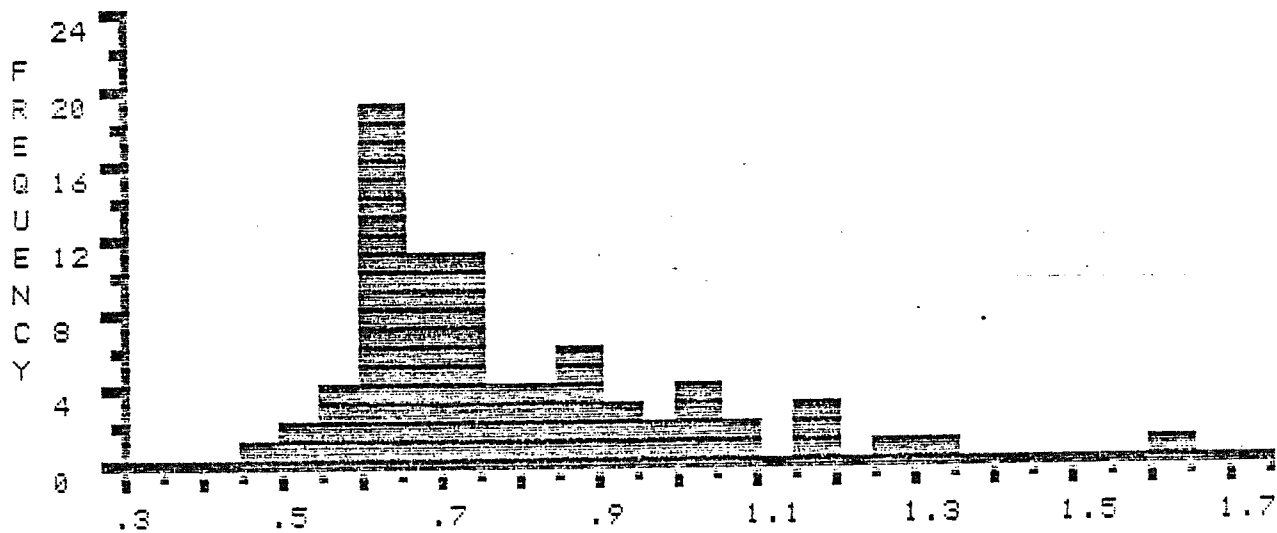
COL>	1	2	3	4	5	6	7	8	9	0
ROW	.47	.51	.52	*.56	*.58	*.58	*.59	*.6	*.6	*.6
1	*.61	*.61	*.61	*.62	*.62	*.62	*.62	*.62	*.62	*.63
2	*.63	*.63	*.63	*.63	*.64	*.64	*.65	*.65	*.65	*.66
3	*.67	*.67	*.67	*.68	*.69	*.69	*.69	*.7	*.7	*.7
4	*.72	*.73	*.73	*.73	*.73	*.74	*.74	*.74	*.75	*.77
5	*.77	*.78	.81	.82	.83	.84	.85	.86	.86	.87
6	.88	.89	.9	.91	.93	.96	.99	1.02	1.02	1.03
7	1.03	1.06	1.09	1.16	1.17	1.19	1.25	1.3	1.64	

SUM : 61.17 NUMBER : 79 MIN : .47 MAX : 1.64 MEAN : .77 STAN.DEV.: .21

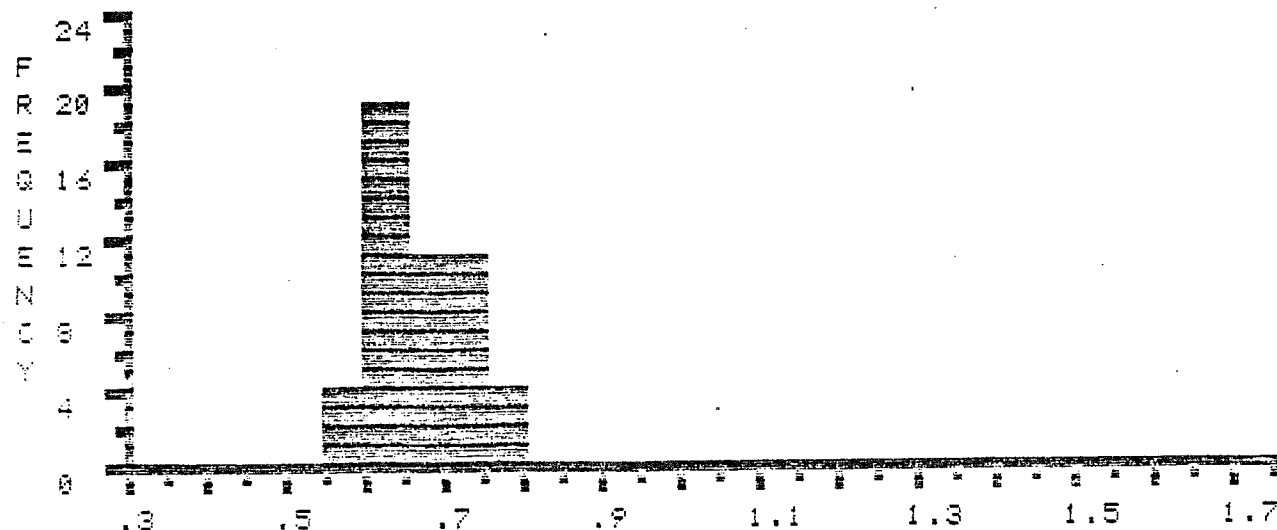
EDITED STATISTICS \* \* \* \* \*

SUM : 32.49 NUMBER : 49 MIN : .56 MAX : .78 MEAN : .66 STAN.DEV.: .06

% R E F L E C T A N C E



% R E F L E C T A N C E \* \* EDITED \* \*





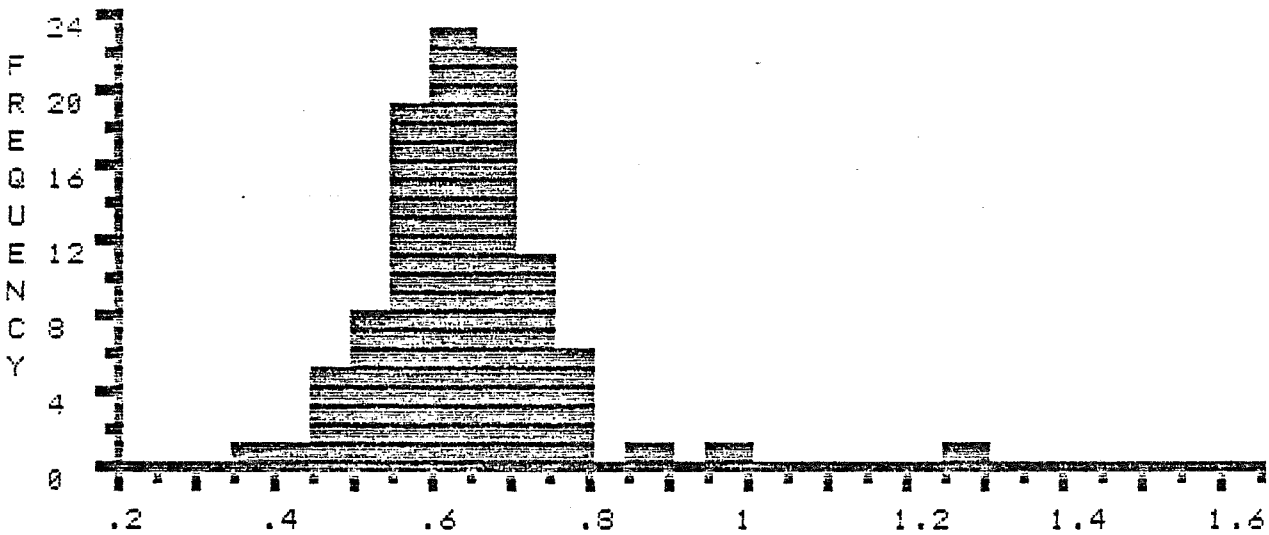
FILE >> K02378 DESCRIPTION FOLLOWS :  
 DEPTH 10190-10220', MIGRANT N-20, MIKE AVERY, OCT-25-84

COL>	1	2	3	4	5	6	7	8	9	0
ROW	.36	.44	*.47	*.48	*.49	*.49	*.49	*.5	*.5	*.5
1	*.52	*.53	*.53	*.54	*.54	*.55	*.56	*.56	*.56	*.56
2	*.57	*.57	*.57	*.57	*.57	*.58	*.58	*.58	*.58	*.59
3	*.59	*.59	*.59	*.59	*.6	*.6	*.6	*.6	*.6	*.6
4	*.61	*.61	*.61	*.61	*.61	*.62	*.62	*.62	*.62	*.63
5	*.63	*.63	*.63	*.63	*.63	*.64	*.64	*.65	*.65	*.65
6	*.65	*.66	*.66	*.66	*.66	*.66	*.67	*.67	*.67	*.67
7	*.67	*.67	*.67	*.68	*.69	*.69	*.69	*.69	*.69	*.7
8	*.71	*.71	*.71	*.71	*.72	*.72	*.73	*.73	*.74	*.74
9	*.75	*.77	*.77	*.78	*.78	*.79	.89	.99	1.29	

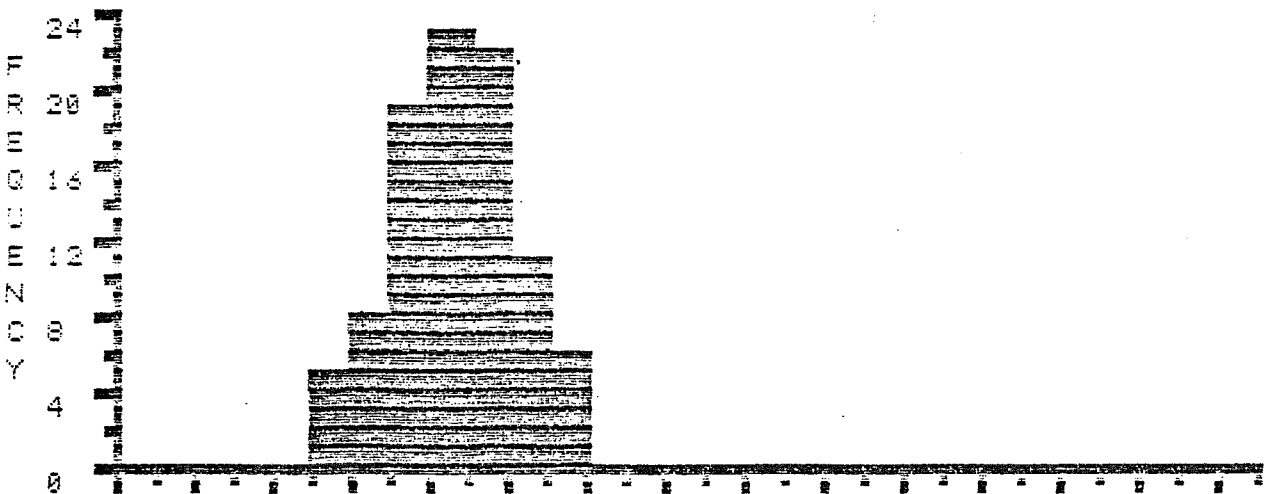
SUM : 62.93 NUMBER : 99 MIN : .36 MAX : 1.29 MEAN : .64 STAN.DEV.: .11

EDITED STATISTICS \* \* \* \* \*  
 SUM : 58.96 NUMBER : 94 MIN : .47 MAX : .79 MEAN : .63 STAN.DEV.: .08

% R E F L E C T A N C E



% R E F L E C T A N C E \* \* EDITED \* \*



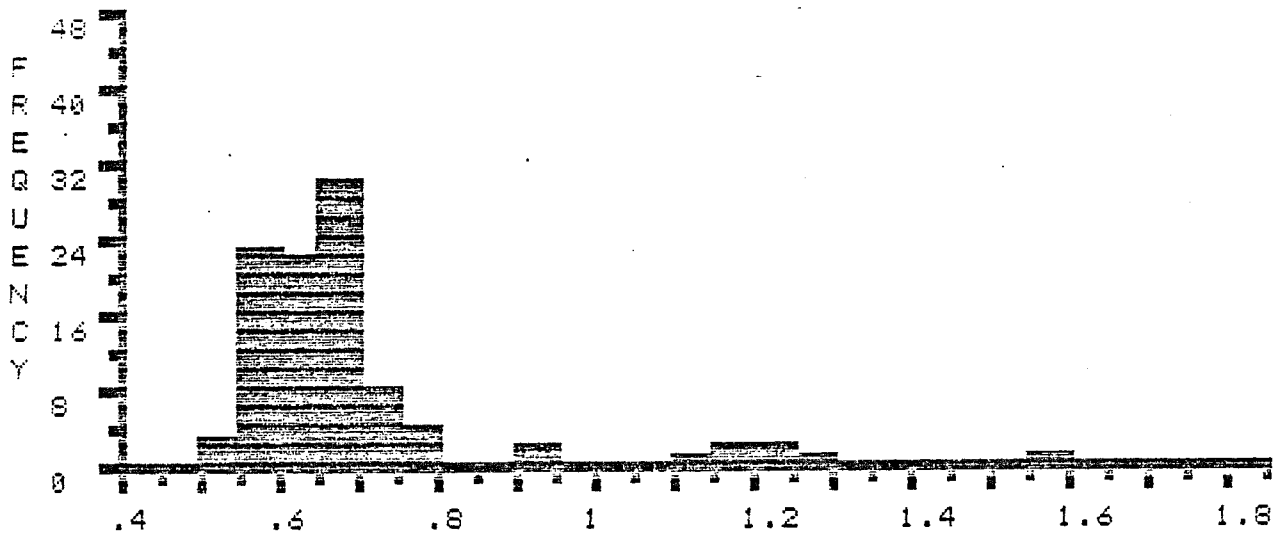
FILE >> K0237C DESCRIPTION FOLLOWS :  
 DEPTH 10850-10880', MIGRANT N-20, MIKE AVERY, OCT-25-84

COL>	1	2	3	4	5	6	7	8	9	0
ROW	*.5	*.53	*.54	*.55	*.55	*.55	*.56	*.56	*.56	*.56
1	*.57	*.57	*.57	*.57	*.57	*.58	*.58	*.58	*.58	*.59
2	*.59	*.59	*.59	*.59	*.59	*.59	*.6	*.6	*.6	*.61
3	*.61	*.62	*.62	*.62	*.62	*.62	*.62	*.62	*.62	*.63
4	*.63	*.64	*.64	*.64	*.64	*.64	*.64	*.64	*.65	*.65
5	*.65	*.65	*.65	*.65	*.66	*.66	*.66	*.66	*.66	*.66
6	*.66	*.66	*.66	*.66	*.67	*.67	*.67	*.67	*.67	*.67
7	*.67	*.67	*.68	*.68	*.68	*.68	*.69	*.69	*.7	*.7
8	*.71	*.72	*.72	*.73	*.74	*.74	*.75	*.76	*.78	*.79
9	.92	.93	1.12	1.15	1.16	1.21	1.22	1.25	1.59	

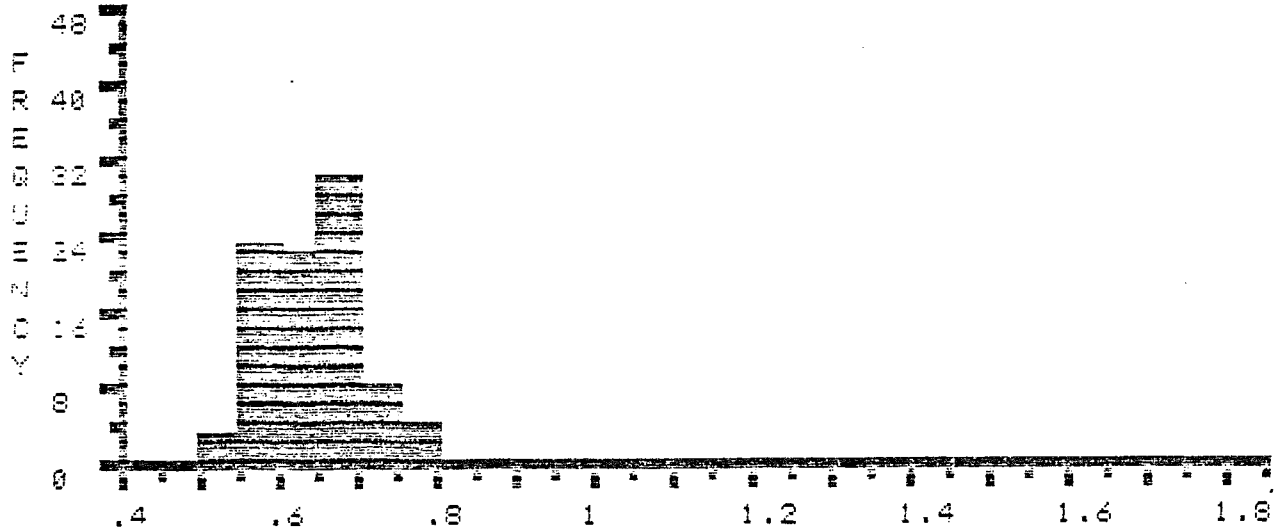
SUM : 67.83 NUMBER : 99 MIN : .5 MAX : 1.59 MEAN : .69 STAN.DEV.: .17

EDITED STATISTICS \* \* \* \* \*  
 SUM : 57.28 NUMBER : 90 MIN : .5 MAX : .79 MEAN : .64 STAN.DEV.: .06

% R E F L E C T A N C E



% R E F L E C T A N C E \* \* EDITED \* \*



FILE >> K0238A DESCRIPTION FOLLOWS :  
 DEPTH 11240-11270', MIGRANT N-20, MIKE AVERY, OCT-26-84

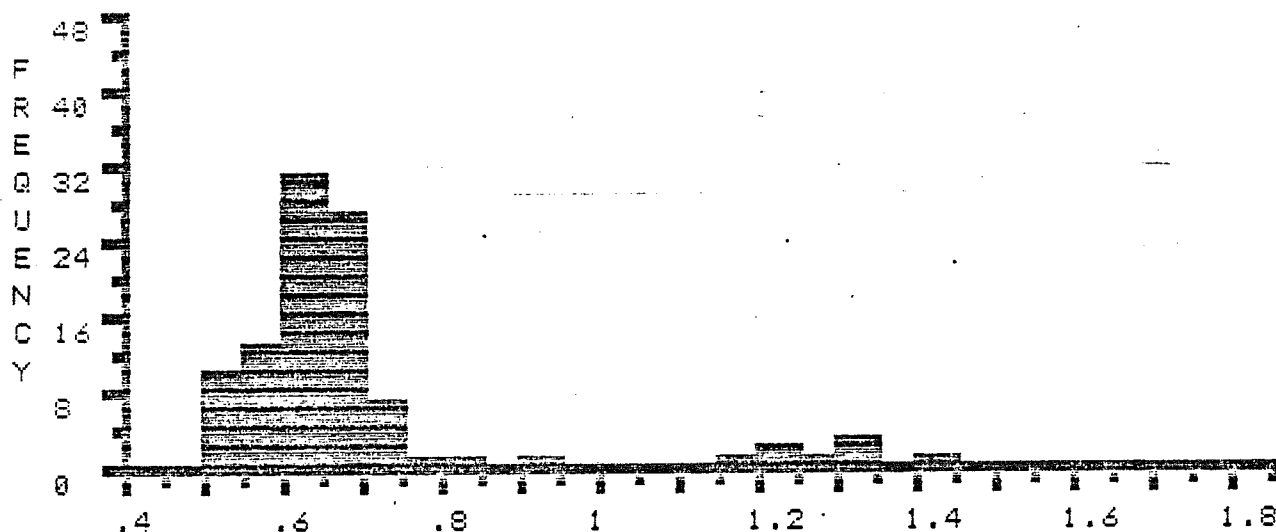
COL>	1	2	3	4	5	6	7	8	9	0
ROW	*.51	*.51	*.51	*.53	*.53	*.54	*.54	*.54	*.54	*.54
1	*.55	*.55	*.55	*.55	*.55	*.55	*.56	*.57	*.57	*.57
2	*.58	*.58	*.59	*.6	*.6	*.6	*.6	*.61	*.61	*.61
3	*.61	*.61	*.62	*.62	*.62	*.62	*.62	*.63	*.63	*.63
4	*.63	*.63	*.63	*.63	*.63	*.63	*.64	*.64	*.64	*.64
5	*.64	*.64	*.64	*.64	*.65	*.65	*.65	*.65	*.65	*.65
6	*.66	*.66	*.66	*.66	*.66	*.67	*.67	*.67	*.67	*.67
7	*.67	*.68	*.68	*.68	*.68	*.68	*.68	*.68	*.69	*.69
8	*.69	*.7	*.7	*.7	*.7	*.71	*.71	*.74	*.75	.81
9	.93	1.17	1.2	1.2	1.29	1.3	1.31	1.33	1.43	

SUM : 67.68 NUMBER : 99 MIN : .51 MAX : 1.43 MEAN : .68 STAN.DEV.: .19

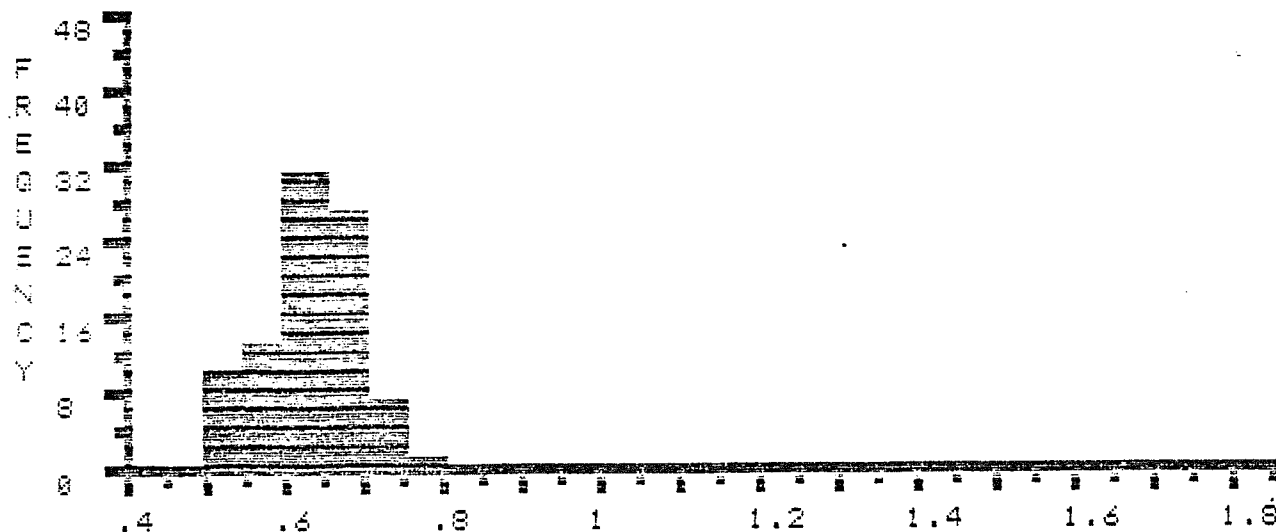
EDITED STATISTICS \* \* \* \* \*

SUM : 55.71 NUMBER : 89 MIN : .51 MAX : .75 MEAN : .63 STAN.DEV.: .06

% R E F L E C T A N C E



% R E F L E C T A N C E \* \* EDITED \* \*



FILE >> K02388 DESCRIPTION FOLLOWS :  
 DEPTH 11600-11630', MIGRANT N-20, MIKE AVERY, OCT-26-84

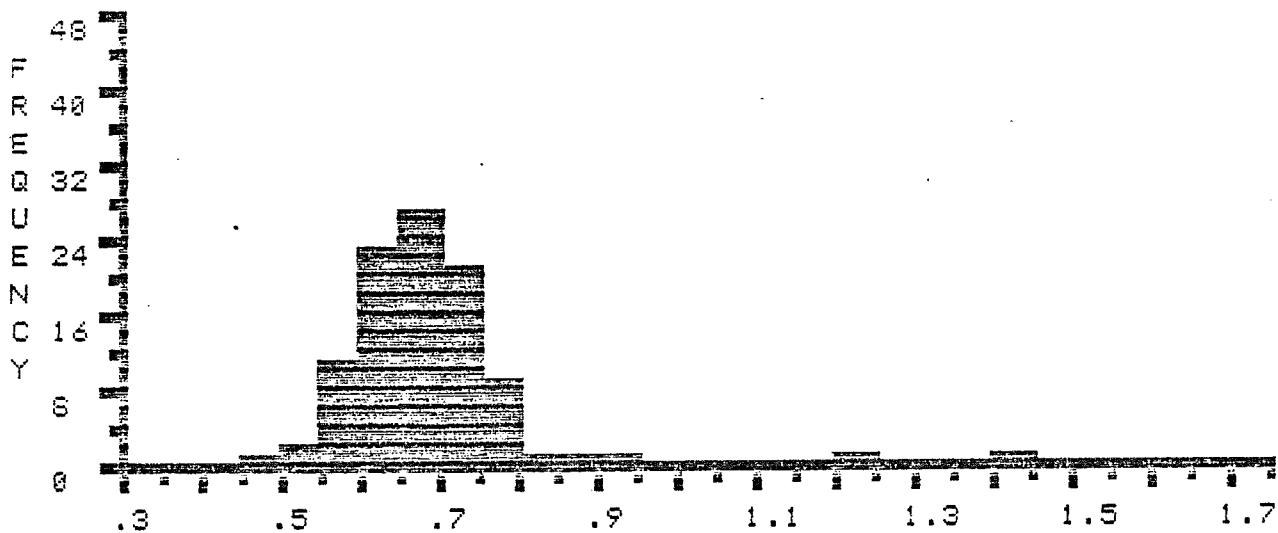
COL>	1	2	3	4	5	6	7	8	9	0
ROW	.47	*.53	*.54	*.55	*.56	*.56	*.57	*.57	*.58	*.58
1	*.59	*.59	*.59	*.59	*.6	*.6	*.6	*.61	*.61	*.61
2	*.61	*.61	*.62	*.62	*.62	*.62	*.62	*.62	*.63	*.63
3	*.63	*.63	*.64	*.64	*.64	*.64	*.64	*.65	*.65	*.65
4	*.65	*.66	*.66	*.66	*.66	*.66	*.66	*.66	*.66	*.66
5	*.67	*.67	*.67	*.67	*.67	*.67	*.68	*.68	*.68	*.68
6	*.69	*.69	*.69	*.69	*.7	*.7	*.7	*.7	*.7	*.71
7	*.71	*.71	*.71	*.71	*.71	*.71	*.71	*.72	*.72	*.72
8	*.72	*.72	*.73	*.74	*.74	*.75	*.75	*.75	*.76	*.77
9	*.77	*.77	*.77	*.78	*.8	.87	.94	1.22	1.4	

SUM : 67.29 NUMBER : 99 MIN : .47 MAX : 1.4 MEAN : .68 STAN.DEV.: .12

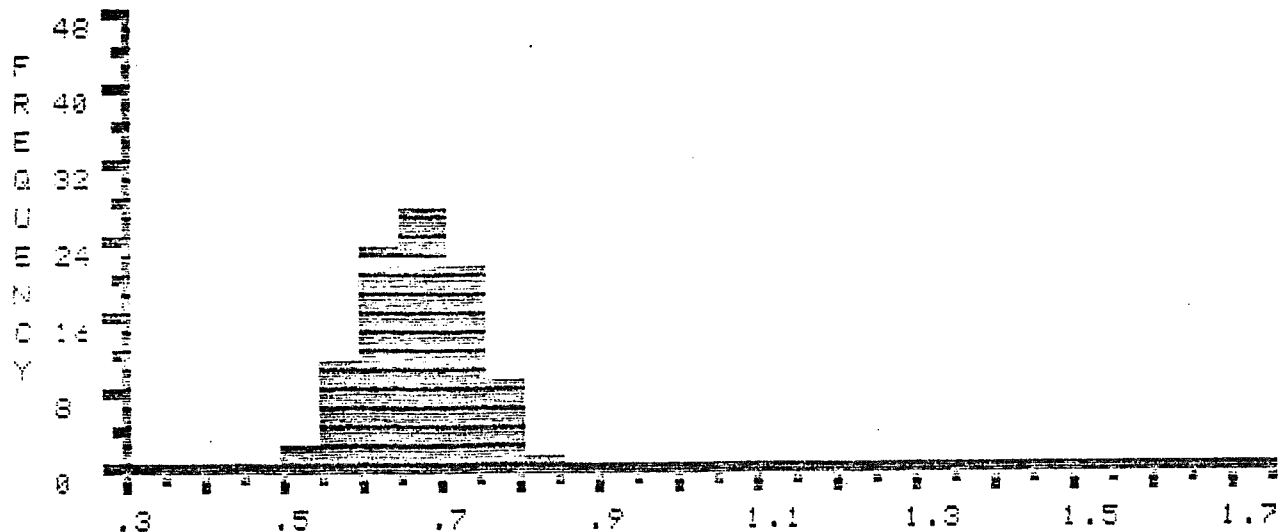
EDITED STATISTICS \* \* \* \* \*

SUM : 62.39 NUMBER : 94 MIN : .53 MAX : .8 MEAN : .66 STAN.DEV.: .06

% R E F L E C T A N C E



% R E F L E C T A N C E \* \* EDITED \* \*



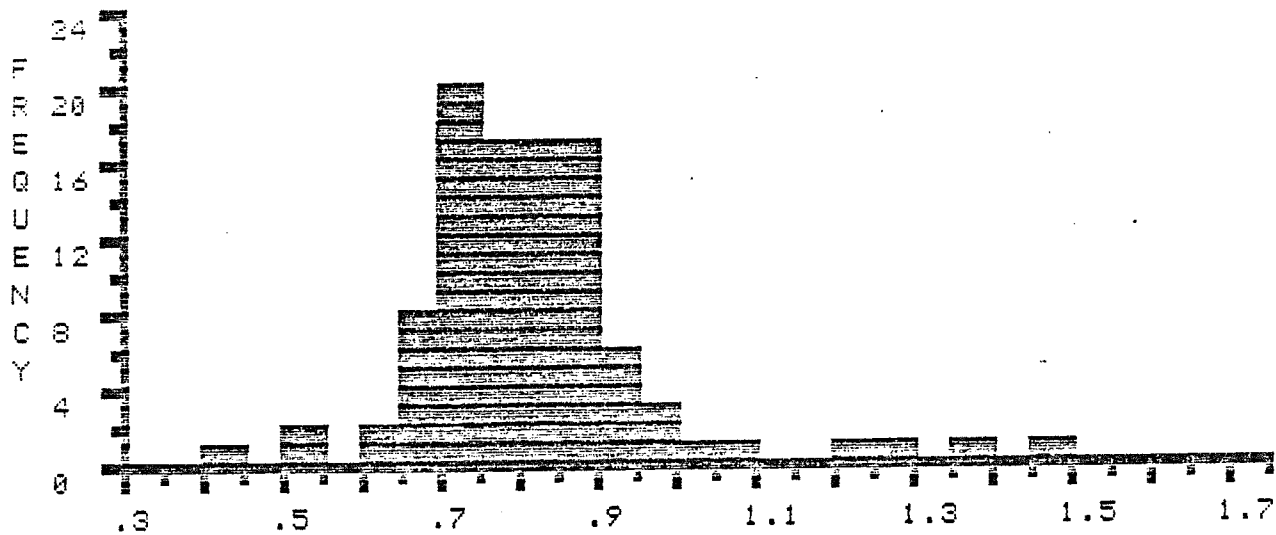
FILE >> K0238C DESCRIPTION FOLLOWS :  
 DEPTH 12050-12080', MIGRANT N-20, MIKE AVERY, OCT-26-84

COL>	1	2	3	4	5	6	7	8	9	0
ROW	.43	.62	.54	.6	*.63	*.65	*.66	*.66	*.66	*.66
1	*.63	*.69	*.69	*.7	*.7	*.7	*.7	*.7	*.71	*.71
2	*.71	*.71	*.72	*.72	*.73	*.73	*.73	*.73	*.73	*.73
3	*.74	*.74	*.74	*.75	*.75	*.75	*.76	*.76	*.76	*.76
4	*.77	*.77	*.77	*.77	*.77	*.77	*.78	*.78	*.78	*.79
5	*.8	*.8	*.8	*.81	*.81	*.81	*.81	*.81	*.82	*.82
6	*.82	*.83	*.83	*.83	*.84	*.84	*.84	*.85	*.85	*.85
7	*.85	*.85	*.86	*.86	*.86	*.87	*.87	*.88	*.88	*.88
8	*.88	*.89	*.89	*.89	*.9	*.92	*.92	*.93	*.93	*.93
9	*.95	*.95	.99	1.02	1.08	1.2	1.28	1.39	1.49	

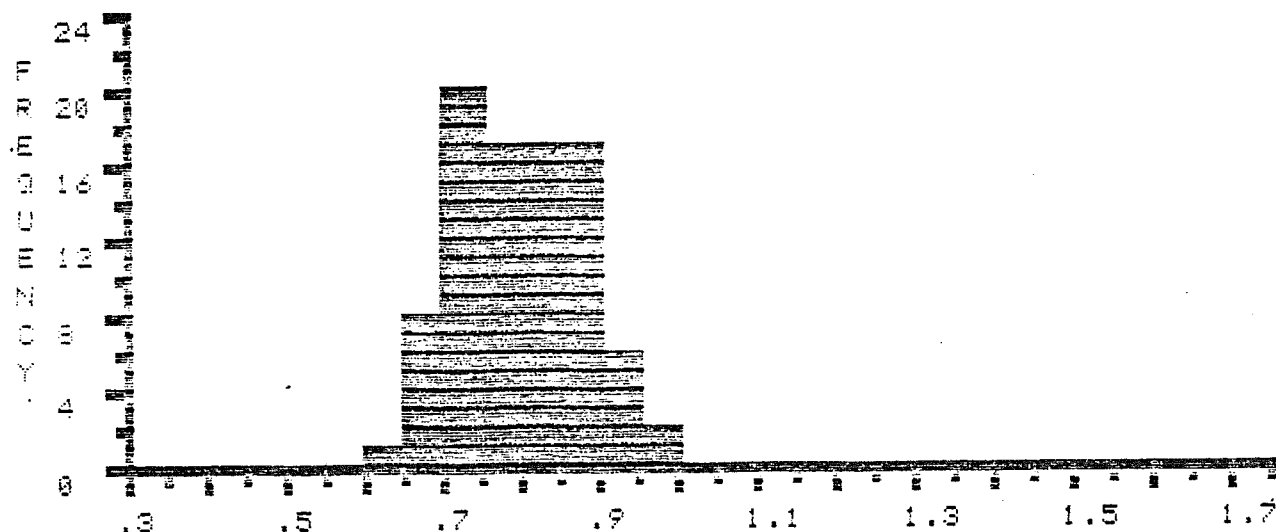
SUM : 80.05 NUMBER : 99 MIN : .43 MAX : 1.49 MEAN : .81 STAN.DEV.: .15

EDITED STATISTICS \* \* \* \* \*  
 SUM : 69.51 NUMBER : 88 MIN : .63 MAX : .95 MEAN : .79 STAN.DEV.: .08

% R E F L E C T A N C E



% R E F L E C T A N C E \* \* EDITED \* \*



FILE >> K0239A DESCRIPTION FOLLOWS :  
 DEPTH 12440-12560', MIGRANT N-20, MIKE AVERY, OCT-26-84

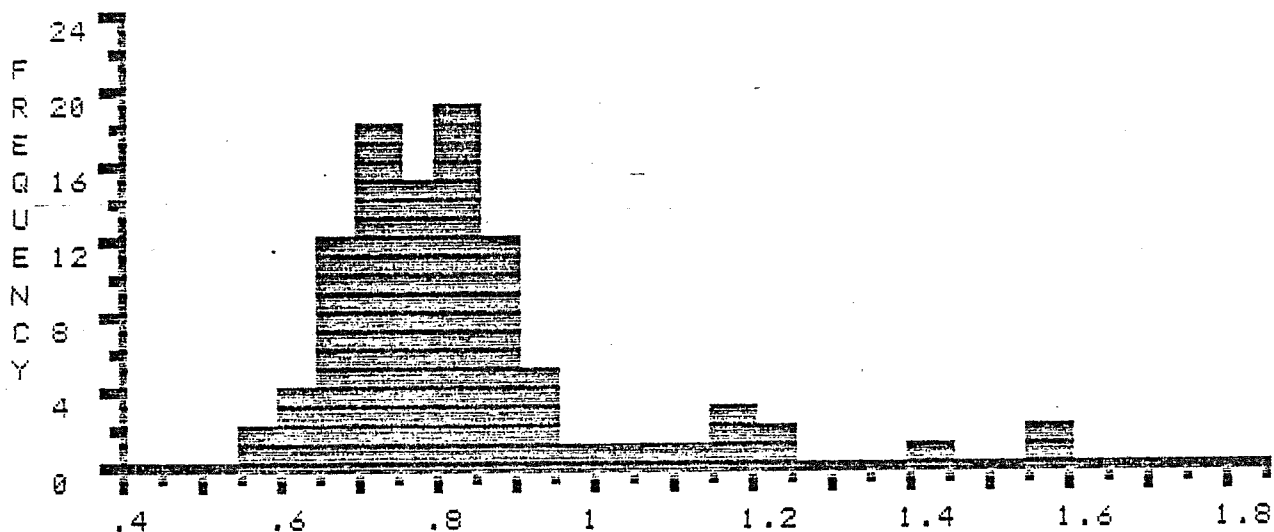
COL>	1	2	3	4	5	6	7	8	9	0
ROW	.55	*.59	*.6	*.6	*.61	*.63	*.65	*.66	*.67	*.67
1	*.67	*.67	*.68	*.68	*.68	*.68	*.68	*.69	*.7	*.71
2	*.71	*.71	*.71	*.71	*.71	*.71	*.72	*.72	*.73	*.73
3	*.73	*.73	*.74	*.74	*.74	*.74	*.75	*.75	*.76	*.76
4	*.76	*.76	*.77	*.77	*.77	*.77	*.78	*.78	*.79	*.79
5	*.79	*.8	*.8	*.8	*.81	*.81	*.81	*.81	*.82	*.82
6	*.82	*.82	*.82	*.83	*.83	*.83	*.83	*.84	*.84	*.84
7	*.85	*.85	*.86	*.86	*.86	*.87	*.87	*.88	*.88	*.89
8	*.89	*.89	*.9	*.91	*.91	*.93	*.94	.99	1	1.08
9	1.14	1.15	1.17	1.19	1.2	1.21	1.43	1.55	1.57	

SUM : 81.5 NUMBER : 99 MIN : .55 MAX : 1.57 MEAN : .82 STAN.DEV.: .18

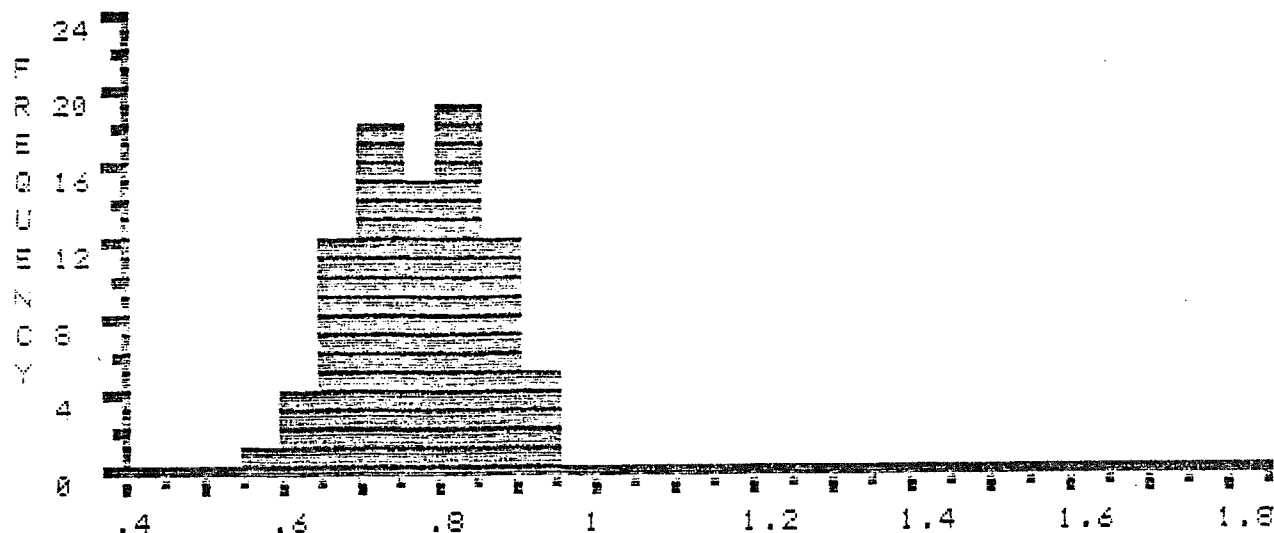
EDITED STATISTICS \* \* \* \* \*

SUM : 66.27 NUMBER : 86 MIN : .59 MAX : .94 MEAN : .77 STAN.DEV.: .08

% R E F L E C T A N C E



% R E F L E C T A N C E \* \* EDITED \* \*



FILE >> K02398 DESCRIPTION FOLLOWS :  
 DEPTH 12900-13010', MIGRANT N-20, MIKE AVERY, OCT-28-84

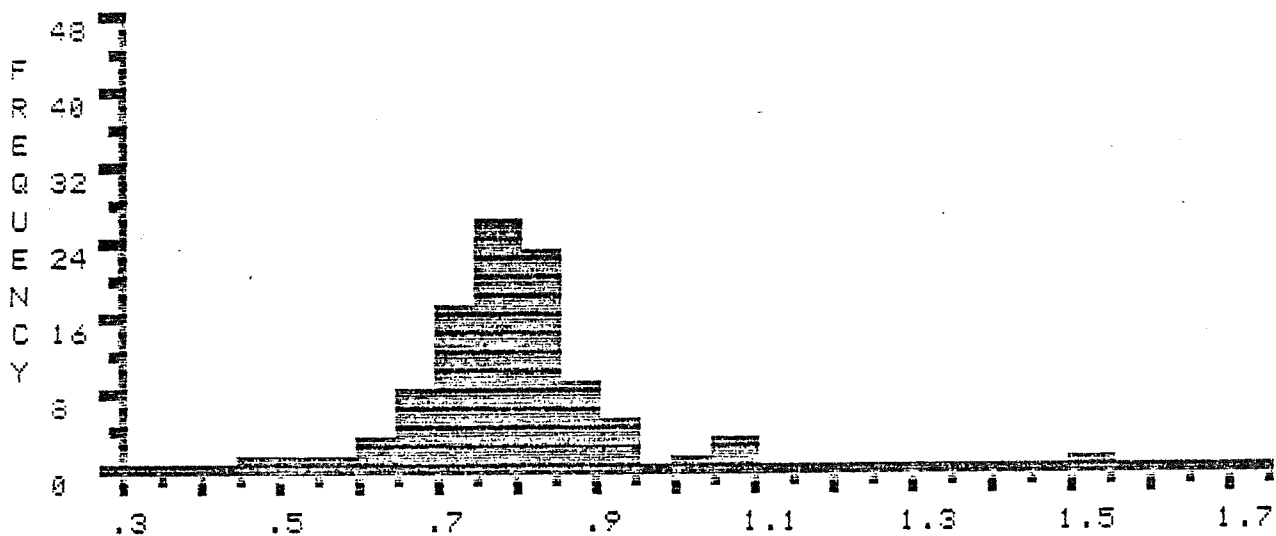
COL	1	2	3	4	5	6	7	8	9	0
ROW	.48	.54	.59	.61	.61	.64	.66	*.68	*.68	*.68
1	*.68	*.69	*.69	*.69	*.7	*.7	*.7	*.7	*.7	*.71
2	*.71	*.72	*.72	*.73	*.73	*.73	*.73	*.73	*.74	*.74
3	*.74	*.75	*.75	*.75	*.75	*.75	*.75	*.76	*.76	*.76
4	*.76	*.77	*.77	*.77	*.77	*.77	*.77	*.77	*.78	*.78
5	*.78	*.79	*.79	*.79	*.79	*.79	*.79	*.8	*.8	*.8
6	*.81	*.81	*.81	*.81	*.81	*.81	*.82	*.82	*.82	*.83
7	*.83	*.83	*.83	*.83	*.83	*.84	*.84	*.84	*.84	*.84
8	*.85	*.85	*.86	*.86	*.87	*.88	*.88	*.88	*.89	*.91
9	*.91	*.92	*.93	*.94	1	1.05	1.06	1.08	1.5	

SUM : 78.18 NUMBER : 99 MIN : .48 MAX : 1.5 MEAN : .79 STAN.DEV.: .12

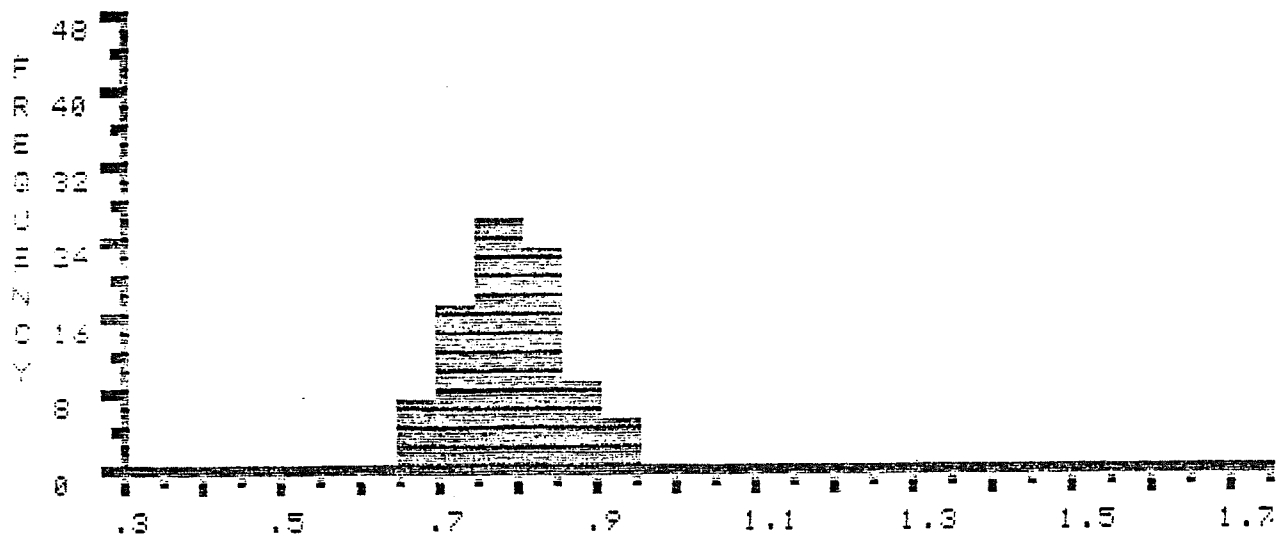
EDITED STATISTICS \* \* \* \* \*

SUM : 68.36 NUMBER : 87 MIN : .68 MAX : .94 MEAN : .79 STAN.DEV.: .06

% R E F L E C T A N C E



% R E F L E C T A N C E \* \* EDITED \* \*



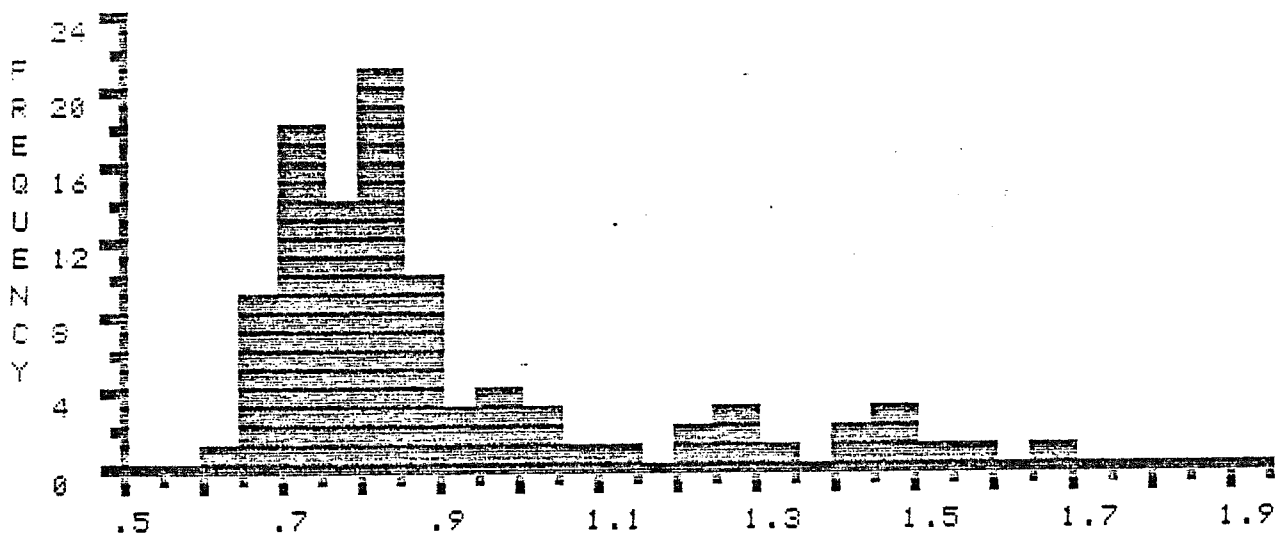
FILE >> K0239C DESCRIPTION FOLLOWS :  
 DEPTH 13610-13640', MIGRANT N-20, MIKE AVERY, OCT-28-84

COL>	1	2	3	4	5	6	7	8	9	0
ROW	*.64	*.65	*.65	*.67	*.67	*.67	*.68	*.69	*.69	*.69
1	*.7	*.7	*.71	*.71	*.71	*.72	*.72	*.72	*.72	*.72
2	*.72	*.73	*.73	*.73	*.74	*.74	*.74	*.74	*.75	*.75
3	*.76	*.76	*.76	*.77	*.77	*.77	*.77	*.77	*.77	*.78
4	*.79	*.79	*.8	*.8	*.8	*.8	*.8	*.8	*.8	*.8
5	*.8	*.81	*.81	*.82	*.82	*.82	*.83	*.83	*.83	*.83
6	*.83	*.83	*.84	*.86	*.86	*.86	*.87	*.87	*.88	*.88
7	*.88	*.89	*.89	*.93	*.93	*.94	*.95	*.97	*.97	*.99
8	*1	*1.01	*1.02	1.05	1.12	1.23	1.23	1.27	1.29	1.29
9	1.34	1.4	1.4	1.47	1.48	1.49	1.54	1.56	1.66	

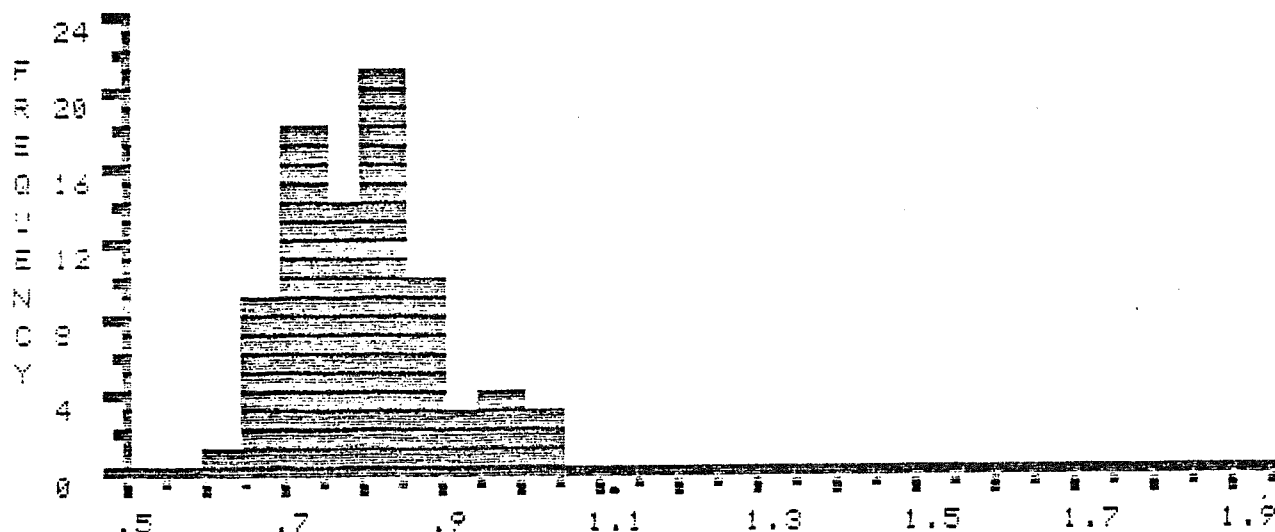
SUM : 87.83 NUMBER : 99 MIN : .64 MAX : 1.66 MEAN : .89 STAN.DEV.: .24

EDITED STATISTICS \* \* \* \* \*  
 SUM : 66.01 NUMBER : 83 MIN : .64 MAX : 1.02 MEAN : .8 STAN.DEV.: .09

% R E F L E C T A N C E



% R E F L E C T A N C E \* \* EDITED \* \*





FILE >> K0240A DESCRIPTION FOLLOWS :  
 DEPTH 14060-14090', MIGRANT N-20, MIKE AVERY, OCT-28-84

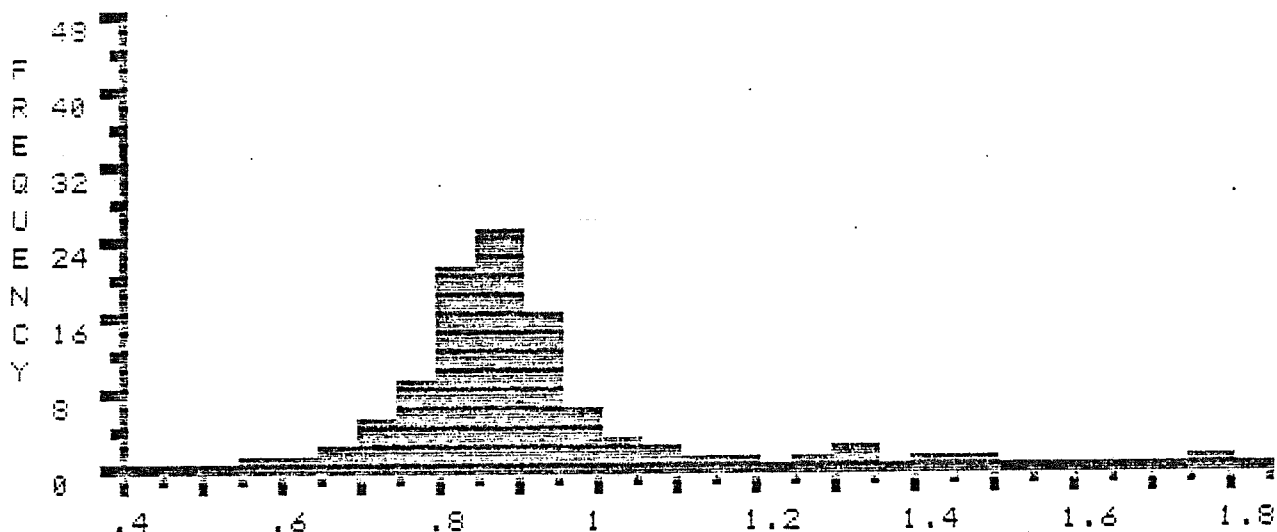
COL>	1	2	3	4	5	6	7	8	9	0
ROW	.68	.64	*.67	*.68	*.7	*.71	*.74	*.74	*.74	*.75
1	*.77	*.77	*.78	*.78	*.79	*.79	*.79	*.79	*.8	*.8
2	*.8	*.8	*.8	*.81	*.81	*.81	*.82	*.82	*.82	*.83
3	*.83	*.83	*.83	*.83	*.83	*.84	*.84	*.84	*.84	*.85
4	*.85	*.85	*.85	*.85	*.86	*.86	*.86	*.86	*.87	*.87
5	*.87	*.87	*.87	*.87	*.88	*.88	*.88	*.88	*.88	*.88
6	*.89	*.89	*.89	*.89	*.9	*.9	*.9	*.91	*.93	*.93
7	*.93	*.93	*.93	*.94	*.94	*.94	*.94	*.94	*.94	*.94
8	*.95	*.95	*.95	*.97	*.98	*.99	*1	*1	*1.02	1.07
9	1.07	1.11	1.18	1.26	1.32	1.33	1.4	1.45	1.75	

SUM : 88.78 NUMBER : 99 MIN : .58 MAX : 1.75 MEAN : .9 STAN.DEV.: .17

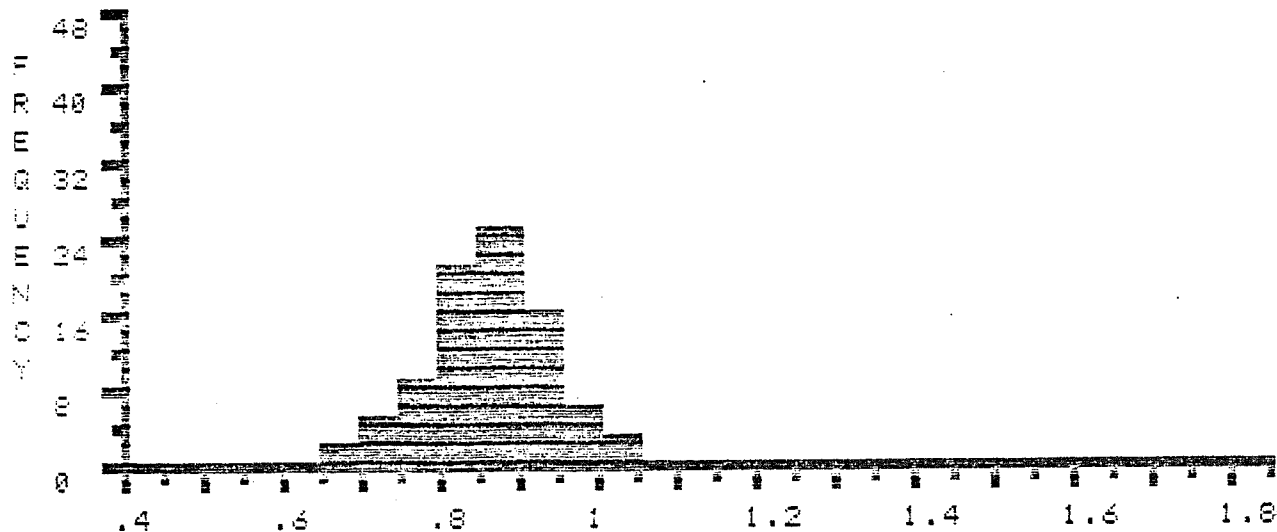
EDITED STATISTICS \* \* \* \* \*

SUM : 74.62 NUMBER : 87 MIN : .67 MAX : 1.02 MEAN : .86 STAN.DEV.: .07

% R E F L E C T A N C E



% R E F L E C T A N C E \* \* E D I T E D \* \*



FILE >> K0240B DESCRIPTION FOLLOWS :  
 DEPTH 14330-14360', MIGRANT N-20, MIKE AVERY, OCT-28-84

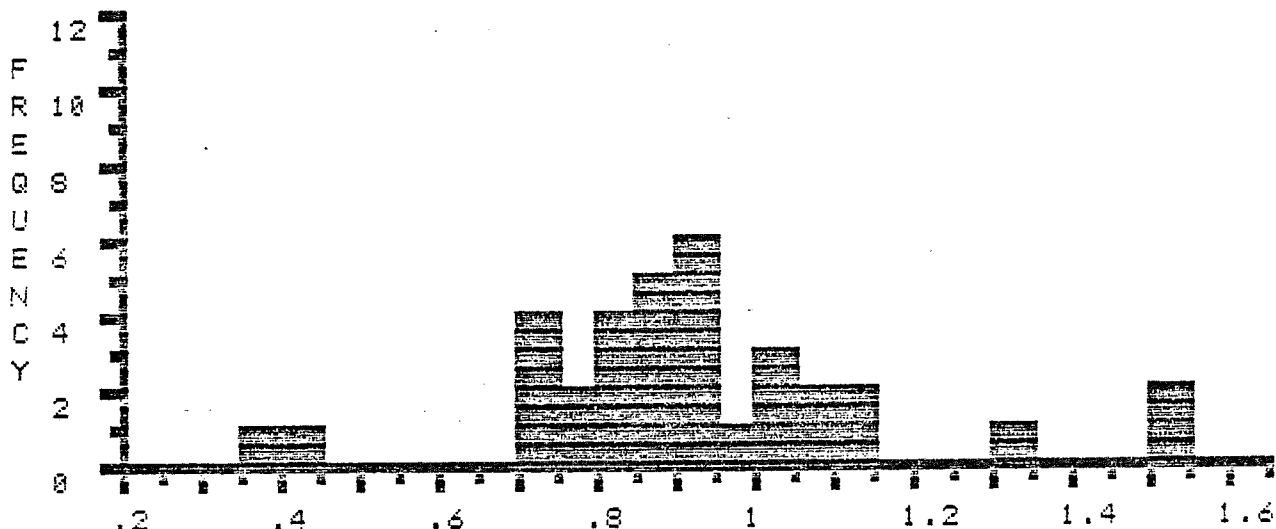
COL>	1	2	3	4	5	6	7	8	9	0
ROW	.87	.48	.7	.72	.73	.74	*.77	*.77	*.82	*.83
1	*.84	*.84	*.85	*.87	*.88	*.89	*.89	*.91	*.91	*.91
2	*.91	*.92	*.93	*.99	*1	*1.01	*1.03	*1.05	*1.09	*1.13
3	*1.14	1.33	1.5	1.51						

SUM : 31.21 NUMBER : 34 MIN : .37 MAX : 1.51 MEAN : .92 STAN.DEV.: .23

EDITED STATISTICS \* \* \* \* \*

SUM : 23.18 NUMBER : 25 MIN : .77 MAX : 1.14 MEAN : .93 STAN.DEV.: .1

% R E F L E C T A N C E



% R E F L E C T A N C E \* \* EDITED \* \*

