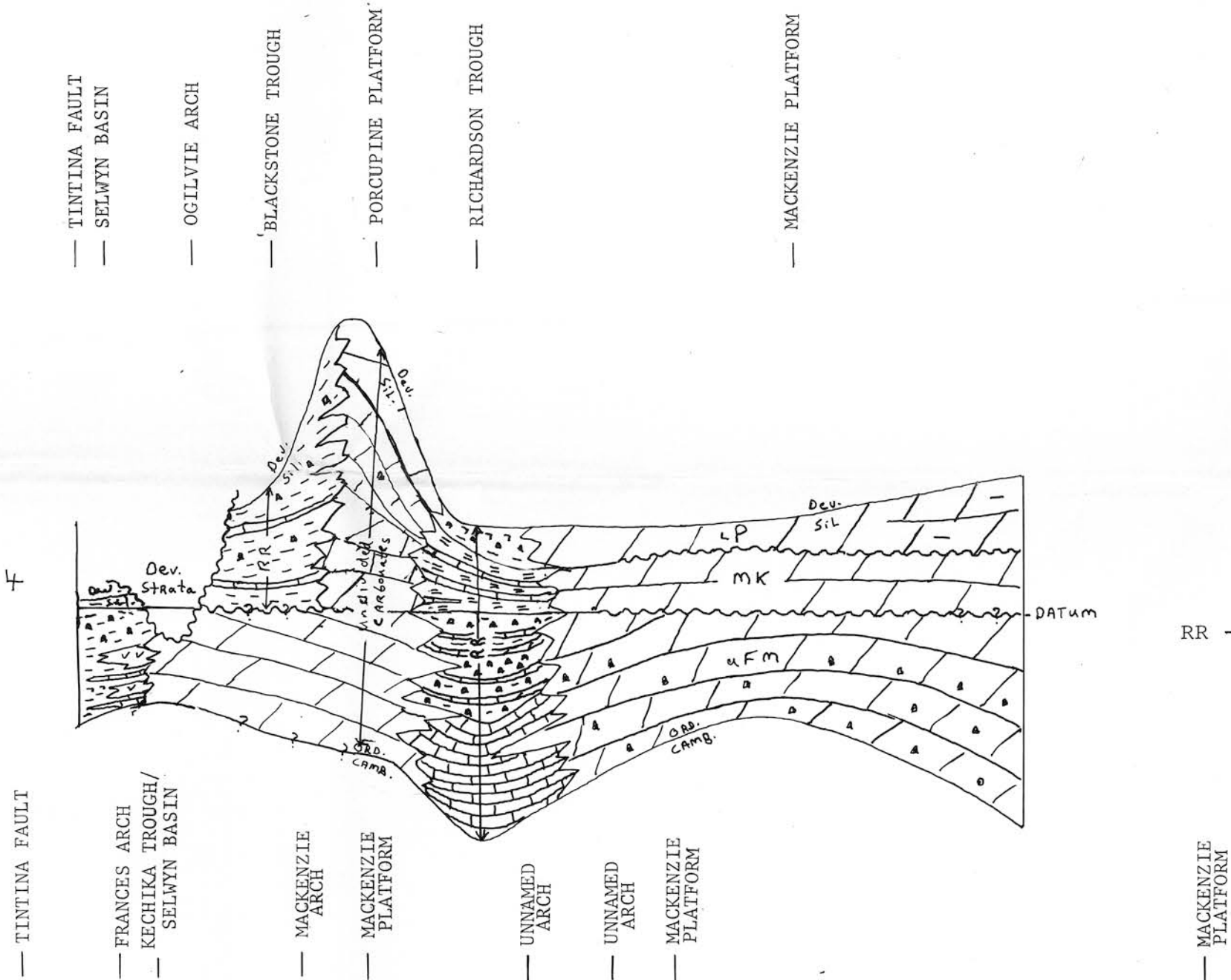


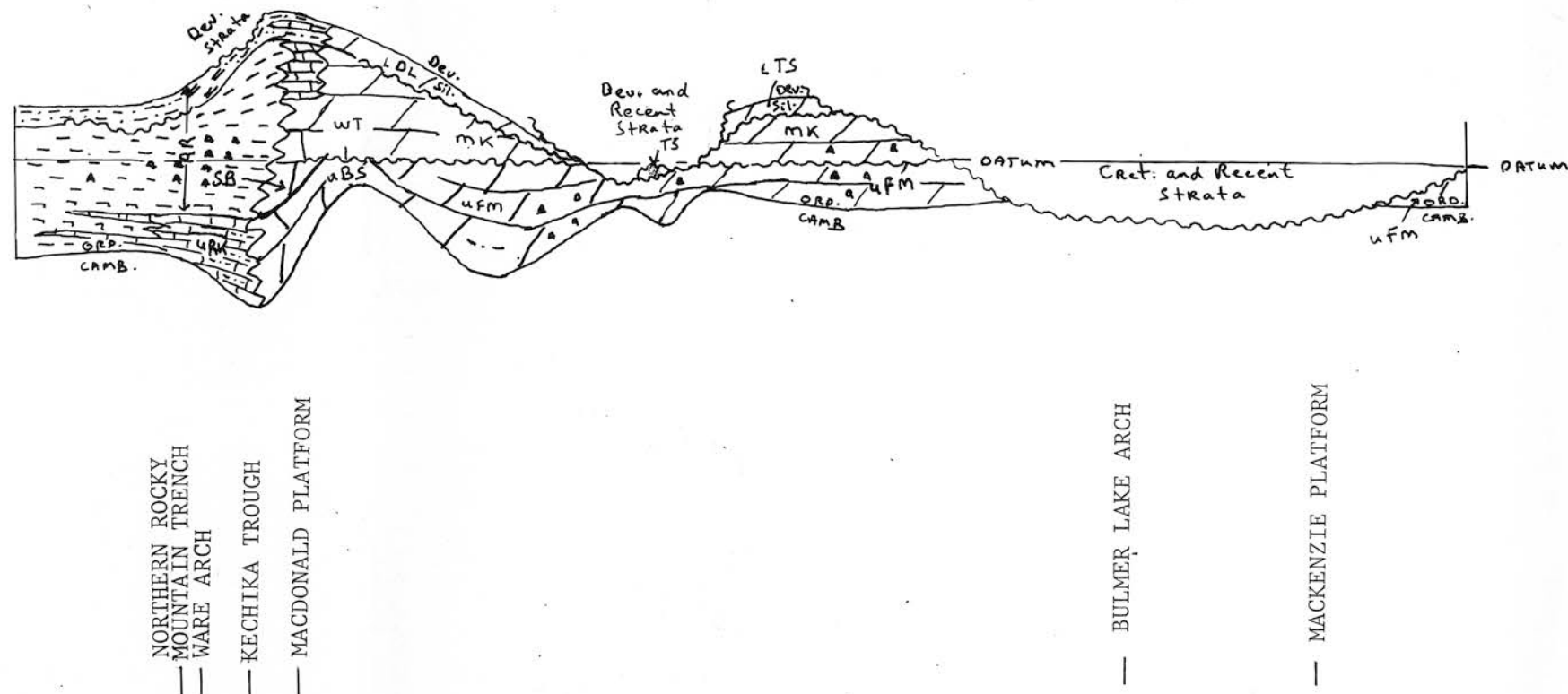
Section 4



STRATIGRAPHIC LEGEND SEC. 4

LP - LOWER PEEL FM.
RR - ROAD RIVER FM. MK - MOUNT KINDLE FM.
UFM - UPPER FRANKLIN MOUNTAIN FM.

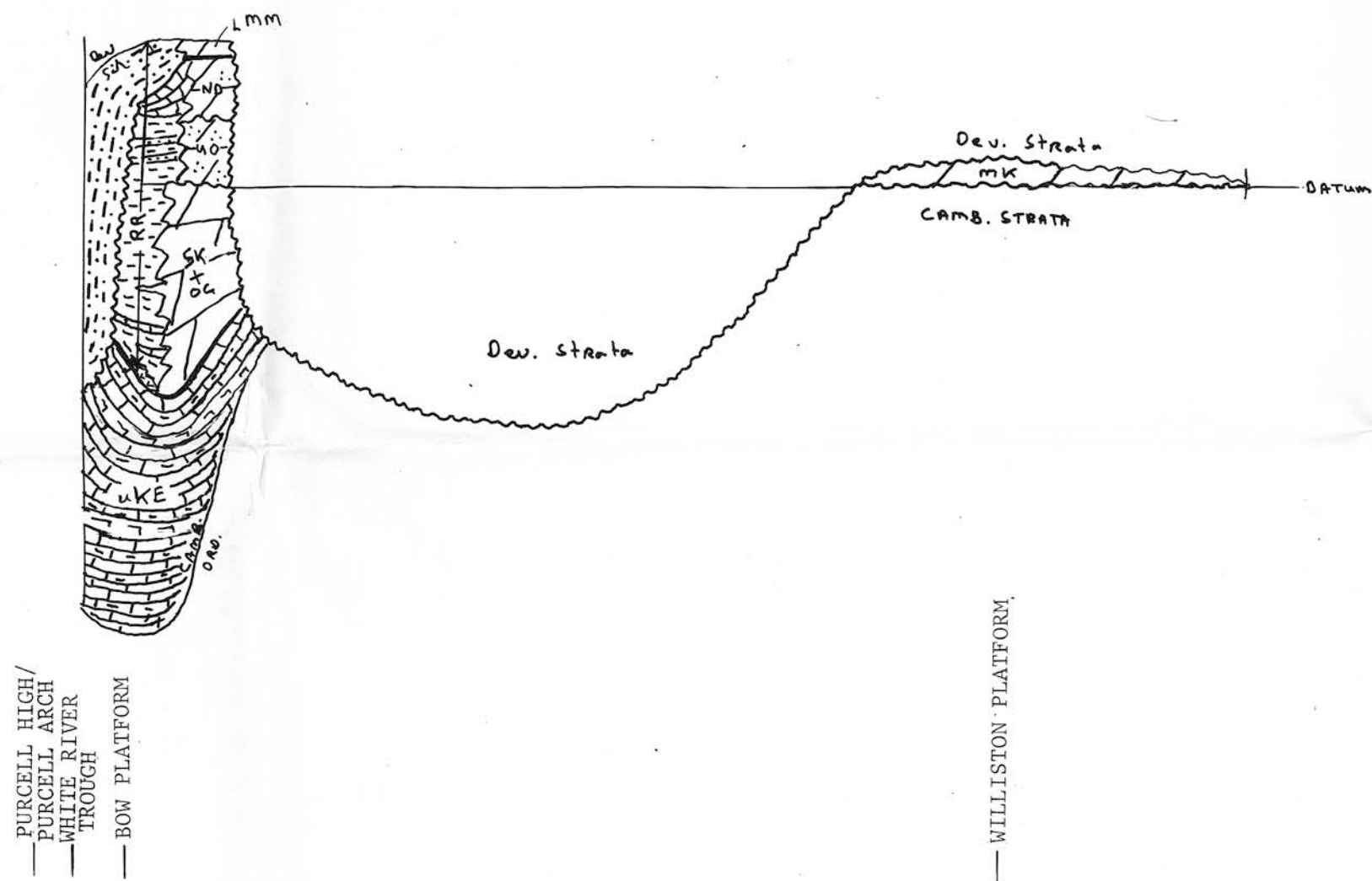
Section 3



STRATIGRAPHIC LEGEND SEC. 3

RR - ROAD RIVER FM. LDL - LOWER DELORME FM. LTS - LOWER TSETSO FM.
RK - UPPER RABBITKETTLER FM. WT - WHITTAKER FM. MK - MOUNT KINDLE FM.
SB - SUNBLOOD FM. UBS - UPPER BROKEN SKULL FM. UFM - UPPER FRANKLIN MOUNTAIN FM.

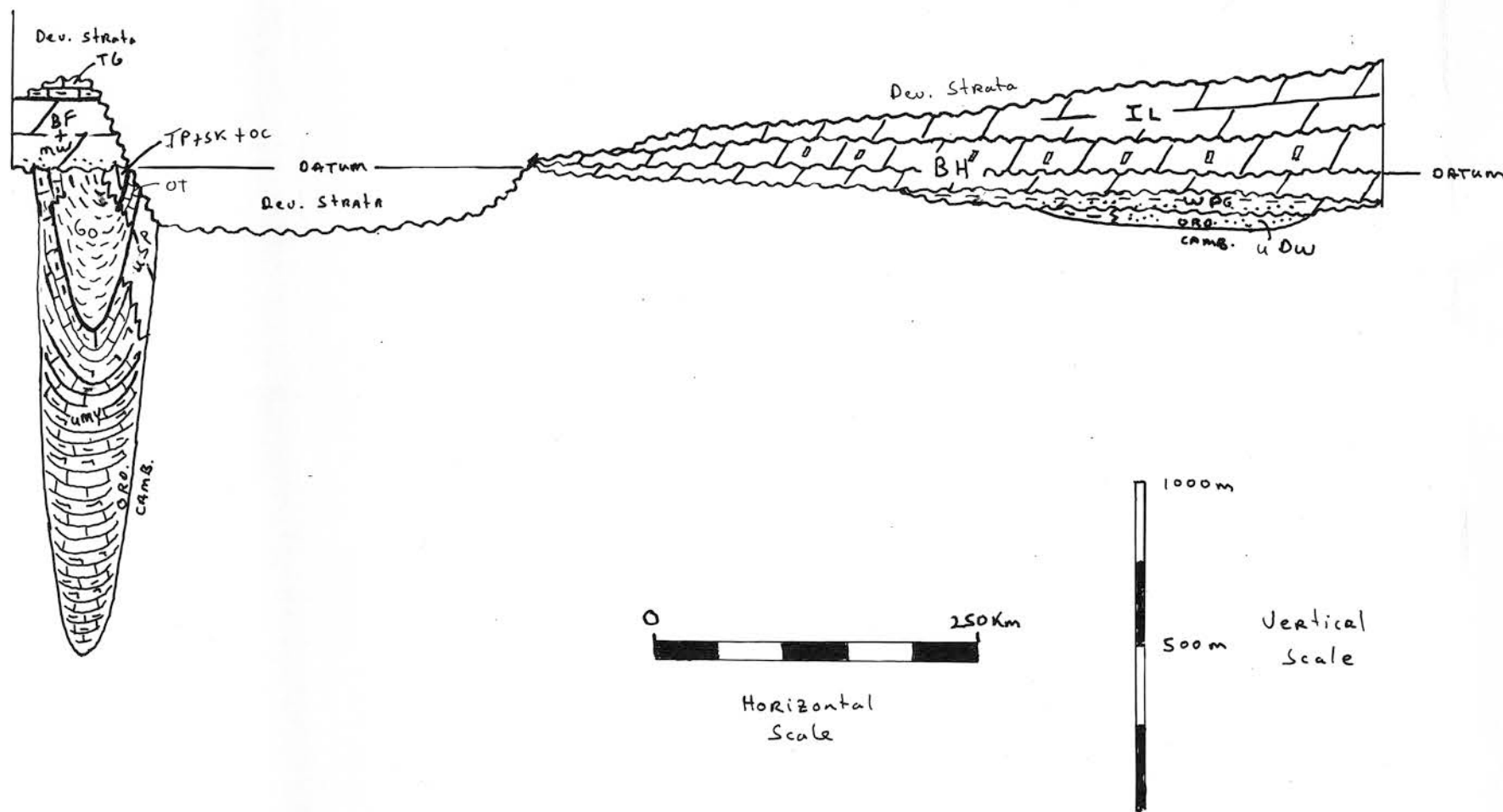
Section 2



STRATIGRAPHIC LEGEND SEC. 2

RR - ROAD RIVER FM. LMM - LOWER MUNCHO McCONNELL FM. MK - MOUNT KINDLE
UKE - UPPER KECHIKA FM. ND - NONDA FM. UO - UNNAMED UPPER ORDOVICIAN STRATA
OC - OWEN CREEK FM. SK - SKOKI FM.

Section 1



STRATIGRAPHIC LEGEND SEC. 1

TG - TEGART FM. BF - BEAVERFOOT FM. IL - INTERLAKE GP.
MW - MOUNT WILSON QUARTZITE BH - BIGHORN GP.
OC - OWEN CREEK FM. WPG - WINNIPEG FM.
GO - GLENOGLE FM. SK - SKOKI FM.
TP - TIPPERARY QUARTZITE
UMY - UPPER MCKAY GP. USP - UPPER SURVEY PEAK FM. UDW - UPPER DEADWOOD FM.

GENERAL LEGEND

UNCONFORMITY
DEV. - DEVONIAN
SIL. - SILURIAN
ORD. - ORDOVICIAN
CAMB. - CAMBRIAN
THIN BEDDED LIMESTONE
THICK BEDDED LIMESTONE
THICK BEDDED DOLOSTONE
CALCAREOUS SHALE
CHERT
SANDSTONE
SILTSTONE
MUDSTONE
VOLCANICS
SHALE, SILICEOUS SHALE
ANHYDRITE

M.P. CECILE AND B.S. NORFORD, 1985

PREPARED FOR THE WESTERN CANADA AND CORDILLERAN D.N.A.G. VOLUMES

COMMENTS AND ACKNOWLEDGEMENTS

This open file is comprised of most of the line drawings for the Ordovician-Silurian portion of the Decade of North American Geology, Western Canada and Canadian Cordilleran volumes. We would be pleased to receive any criticism, advice, suggestion, or additional information.

We would like to acknowledge the hundreds of individuals whose maps, publications, and unpublished works provided the basic data used to prepare these maps and cross-sections. We would also like to thank J.D. Aitken, D.G. Cook, H. Gabrielse, S.P. Gordey, D. W. Morrow, D.C. Pugh, A.V. Okulitch, L. Struik, D.J. Templeman-Kluit, R.I. Thompson, J.O. Wheeler, and G.K. Williams for their critical comments, suggestions, and additional information.