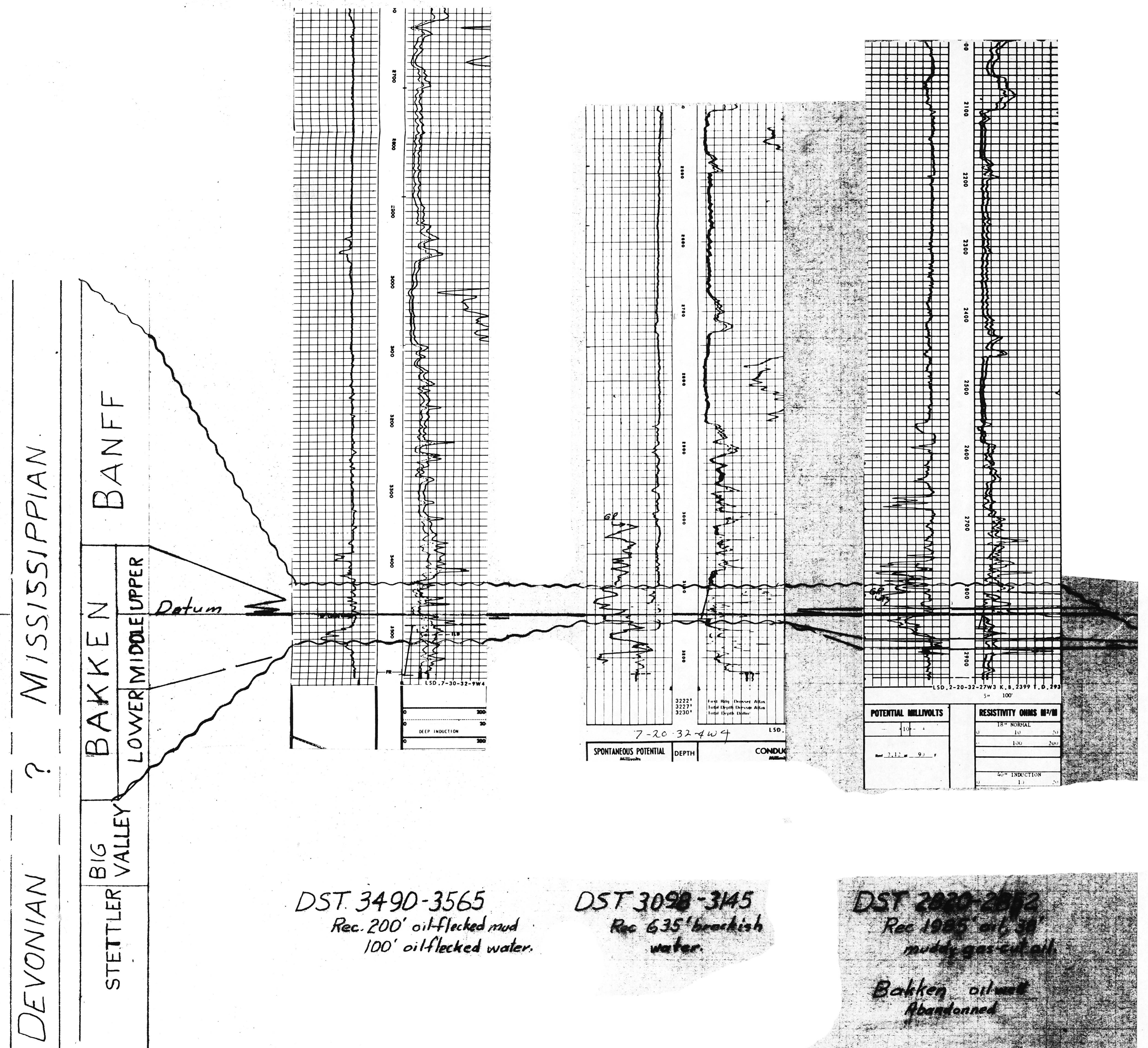
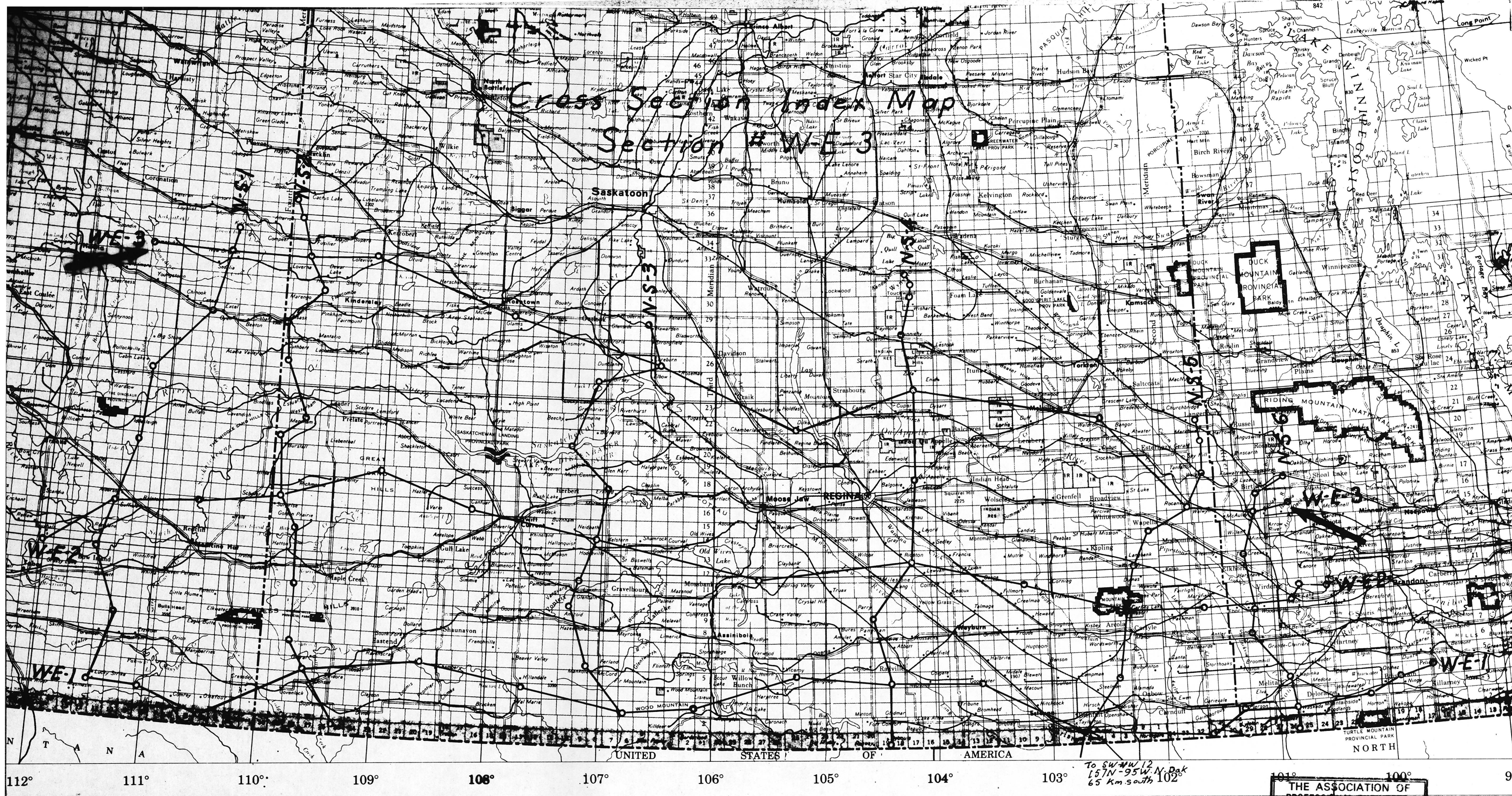


Bakken - Cross Section
W-E-3

7-30-32-4 W4
K.B. 2531

7-20-32-4 W4
K.B. 2537

West



8-14-29-14 W3
K.B. 1976'

12-16-26-4 W3
K.B. 2000'

16-3-22-24 W2
K.B. 1796'

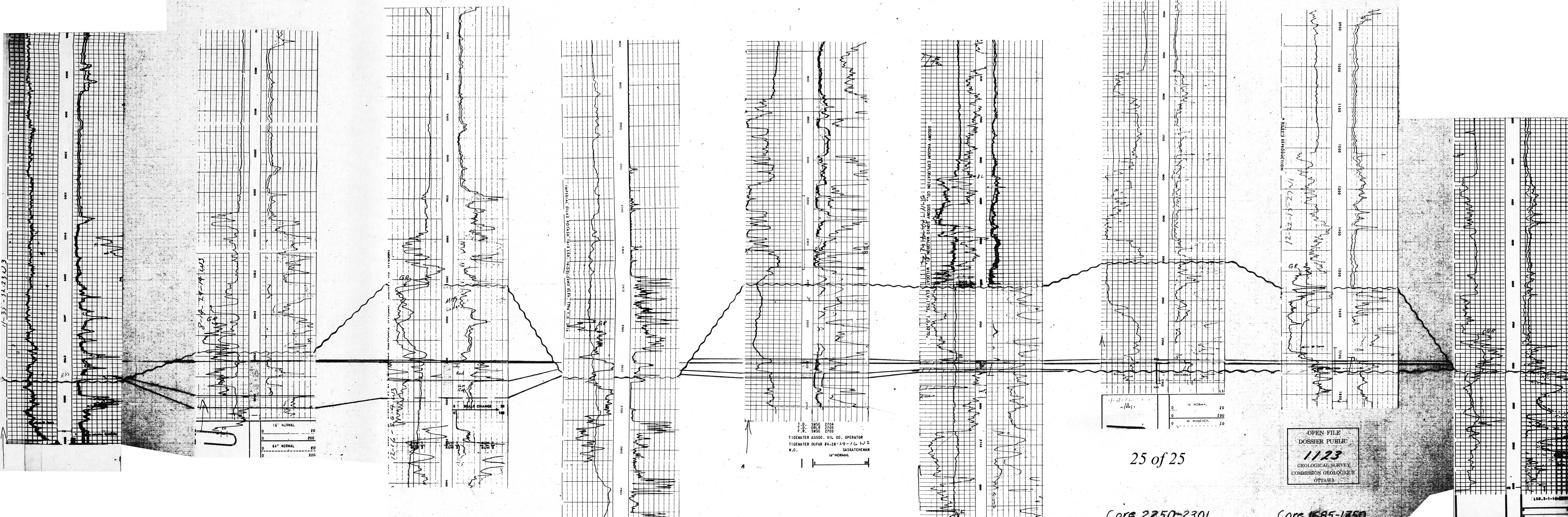
4-28-24-16 W2
K.B. 2073'

5-11-22-4 W2
K.B. 1753'

4-4-16-31 W1
K.B. 1754'

12-22-15-27 W1
K.B. 1555'

2-1-16-25 W1
K.B. 1791'



DST 3108-3115
Rec 30' mud-cut salt water.

DST 2576-2611
Rec. 780' muddy salt water.

DST 1798-1829
Rec. 420' water.

Core 2250-2301
Bakken oilwell.

Core 1685-1750
DST 1710-1750
Rec. 70' oil

LIBRARY
FEB 6 1985
CALGARY
INST. SEDIMENTARY & PETROLEUM GEOLOGY

This map has been reprinted from a scanned version of the original map. Reproduction par numérisation d'une carte sur papier.