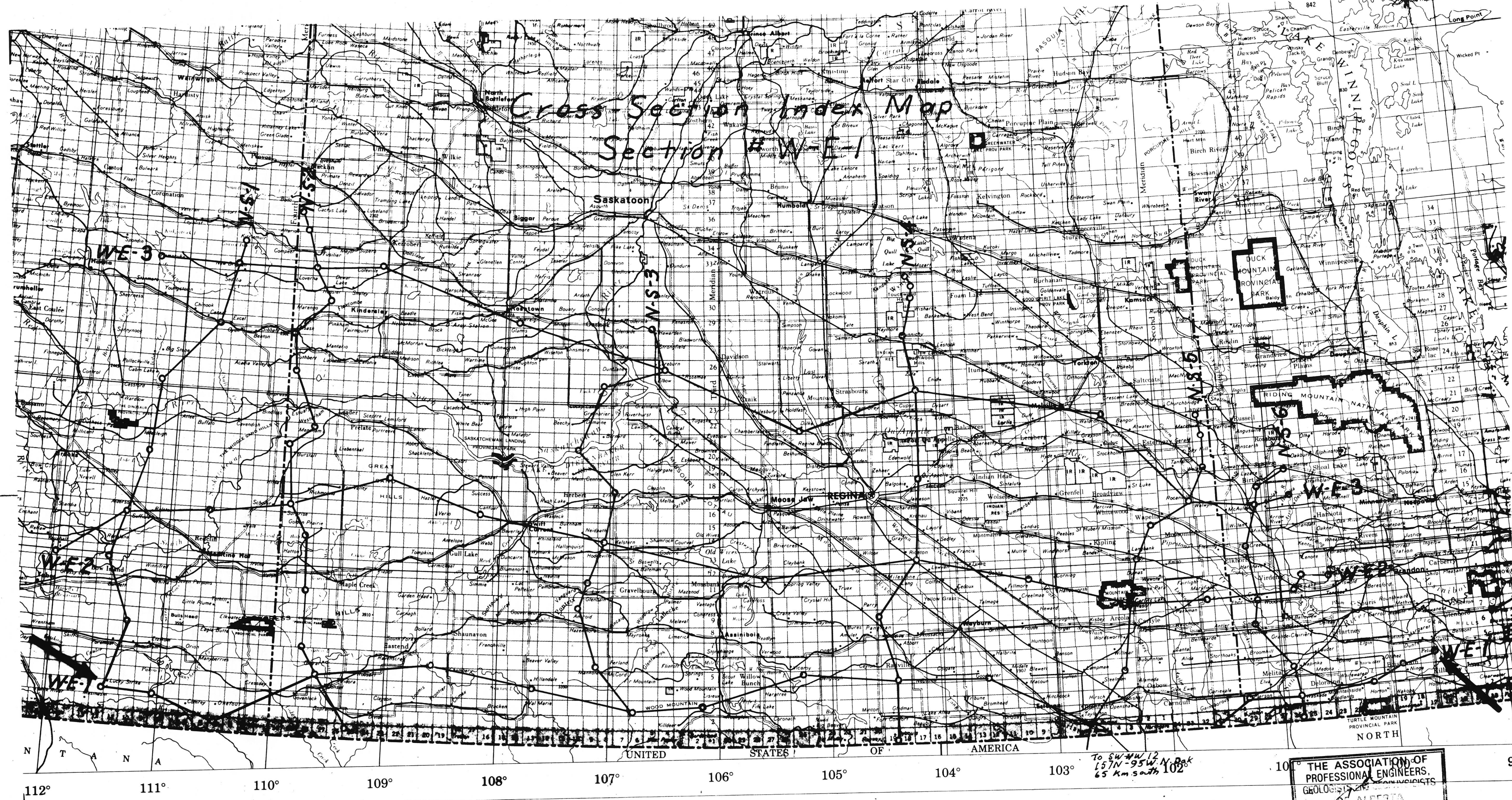


Bakken - Cross Section  
# W-E-1

6-24-3-12 W4  
KB. 3263'

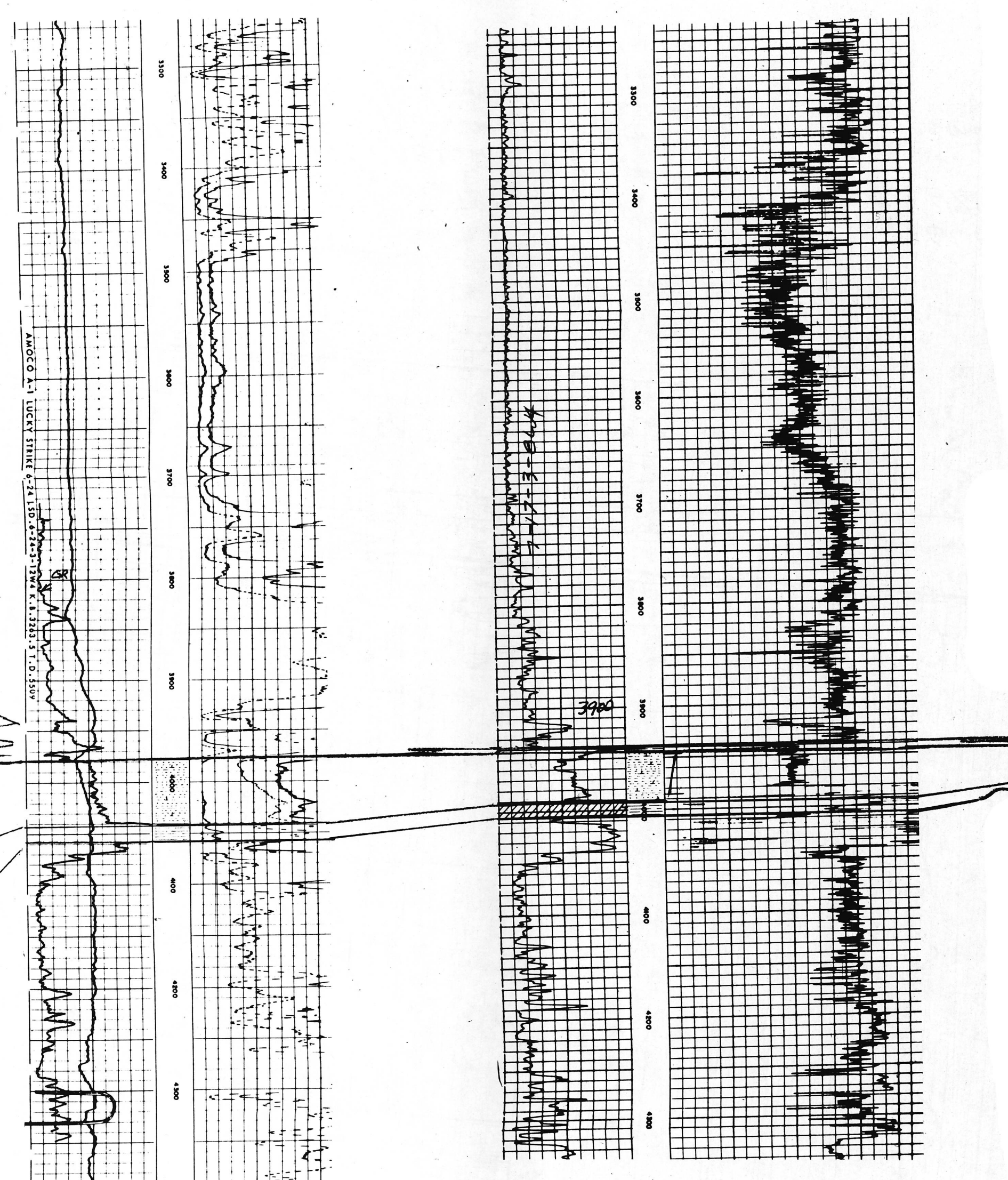
7-17-3-8 W4  
KB. 2995'

West



DEVONIAN ? MISSISSIPPIAN

STETTLER VALLEY  
BIG VALLEY  
BAKKEN LOWER MIDDLE UPPER  
LODGE POLE



DST 3946-3985  
Rec. 40' mud

12-32-1-4 W4  
KB. 3000'

14-7-5-27 W3  
KB. 3194'

16-11-6-20 W3  
KB. 994.7m

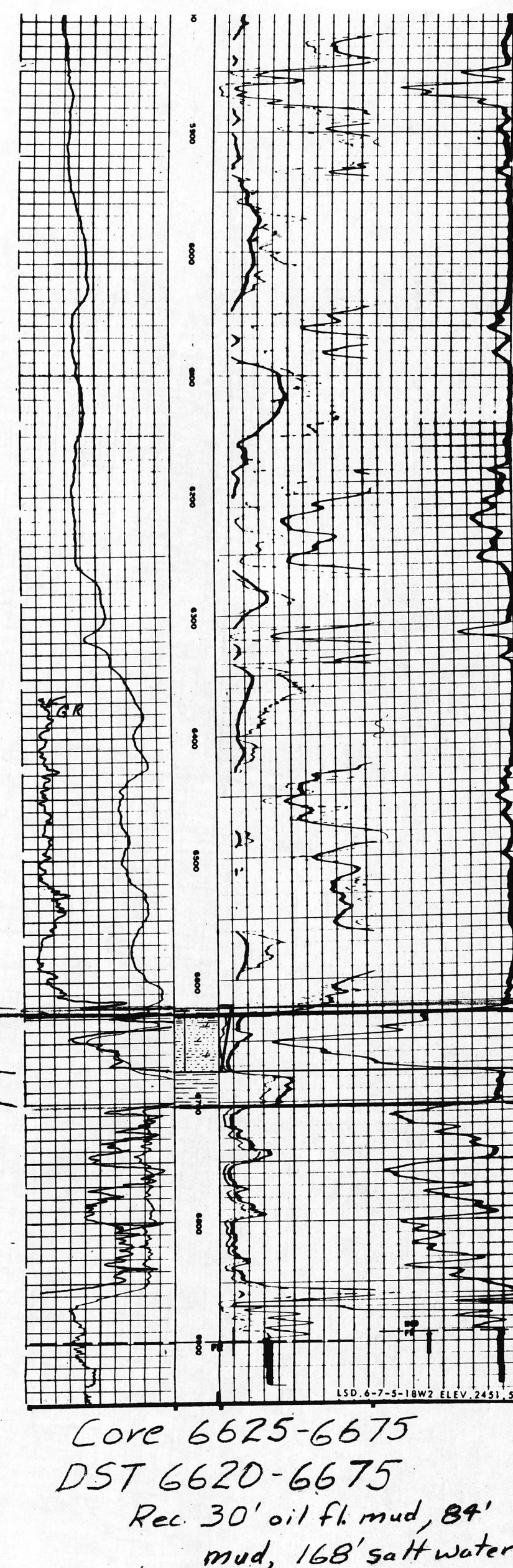
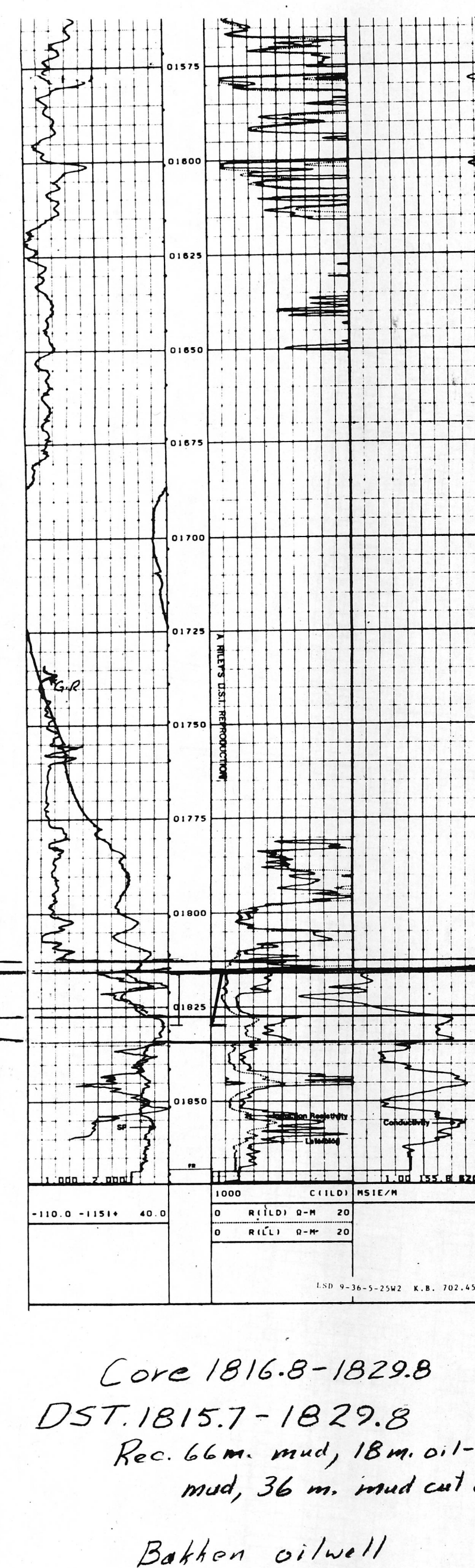
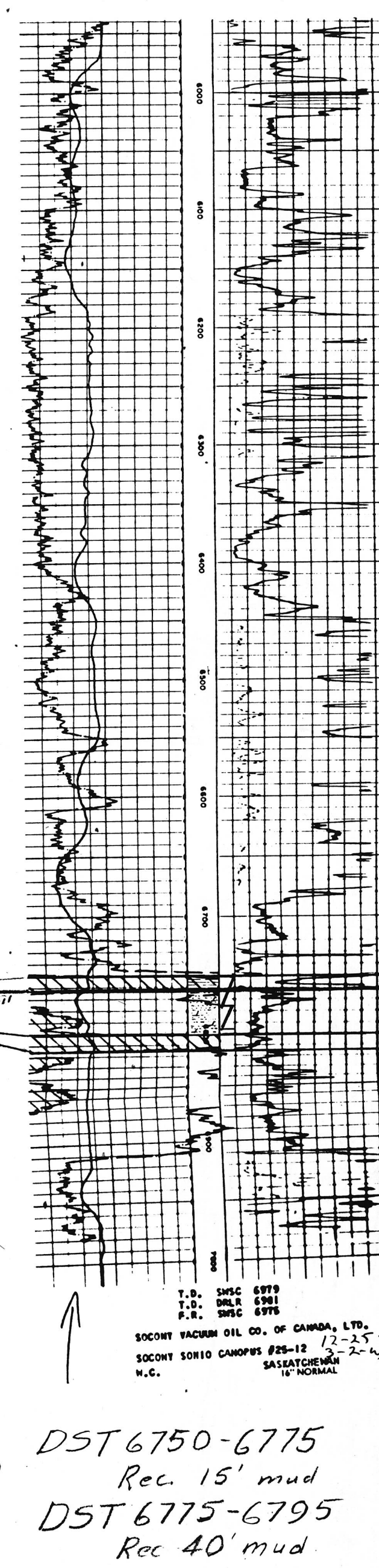
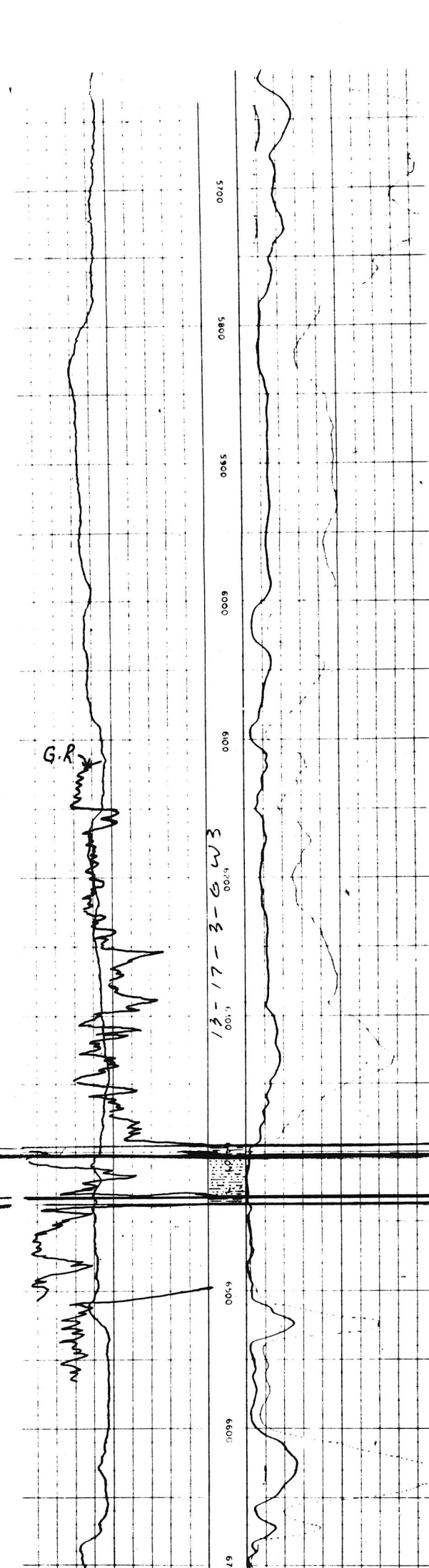
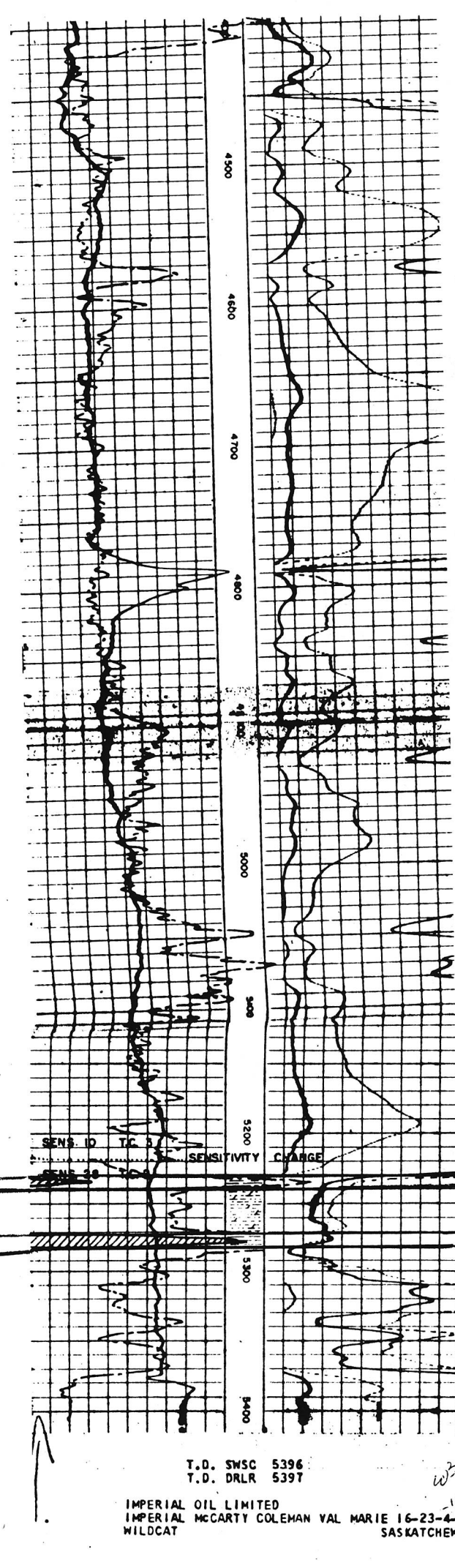
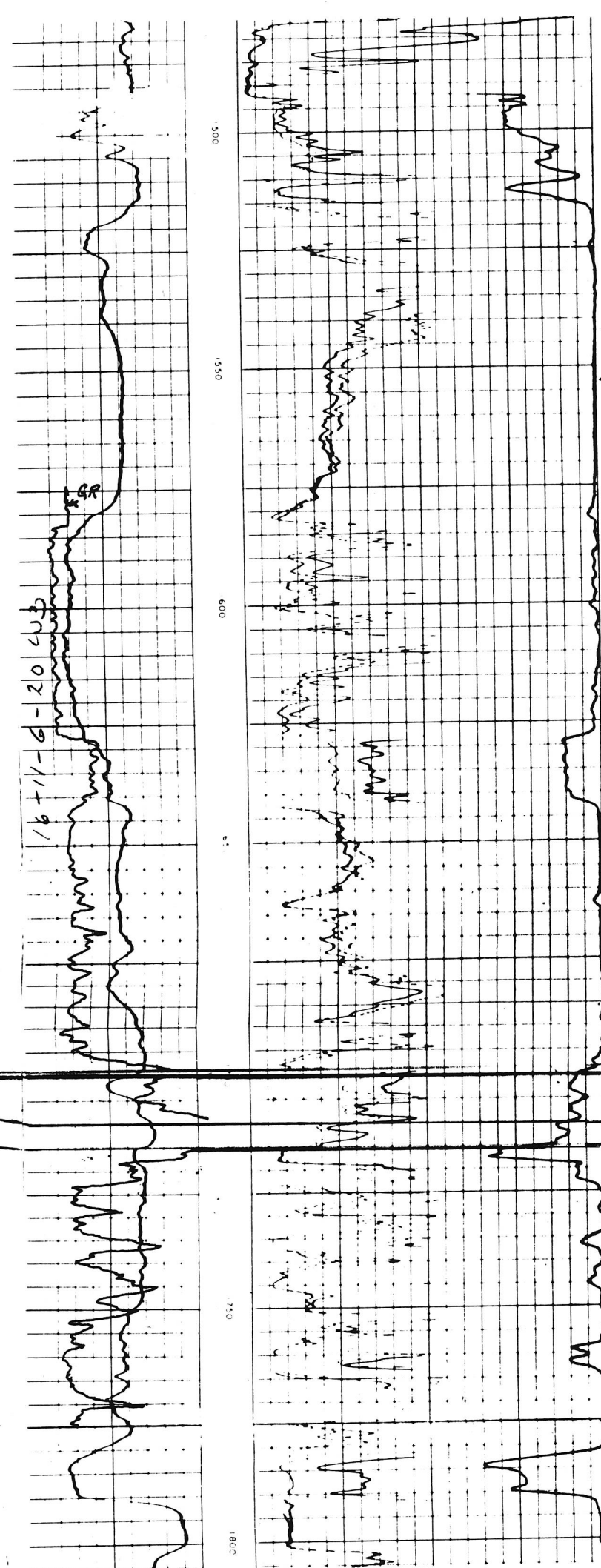
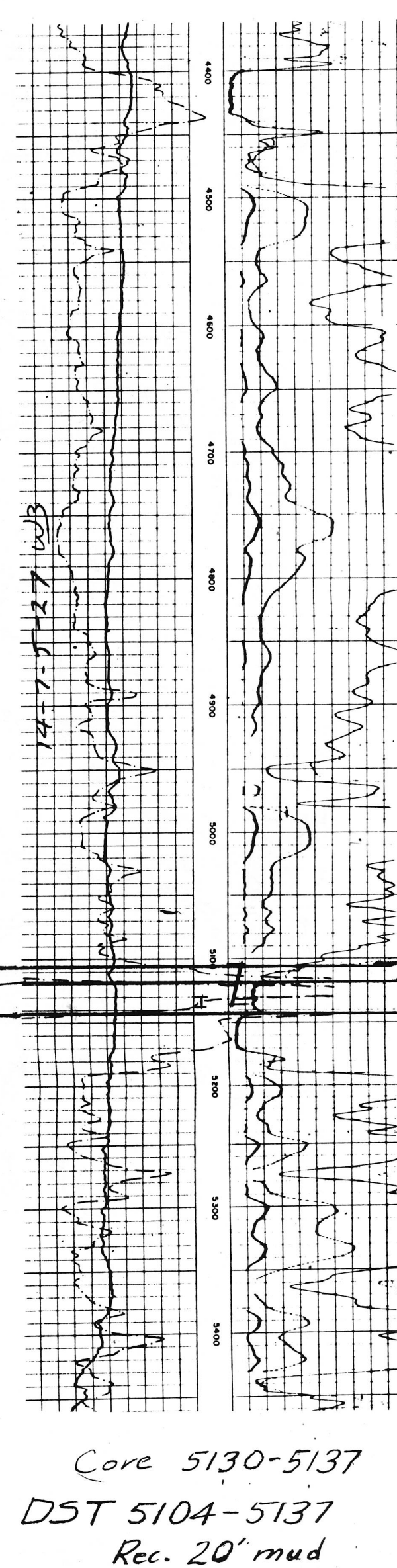
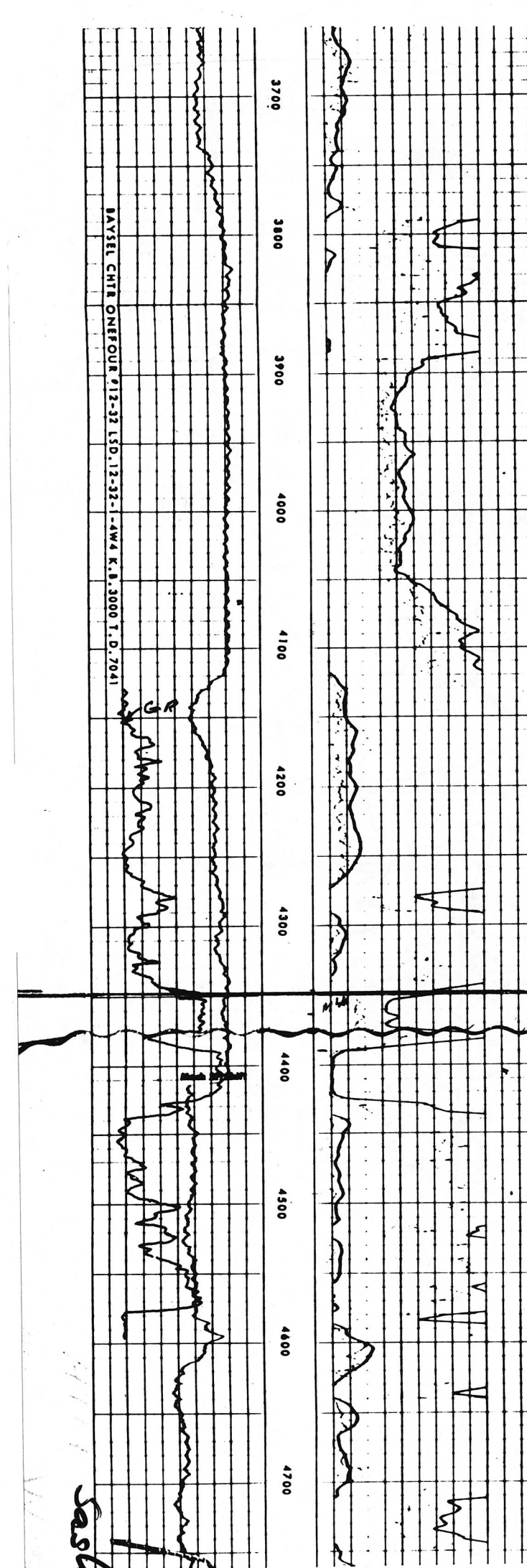
16-23-4-13 W3  
KB. 2802'

13-17-3-6 W3  
KB. 3255'

12-25-3-2 W3  
KB. 3221'

9-36-5-25 W2  
KB. 702.5m

6-7-5-18 W2  
KB. 74.52'



Core 5130-5137  
DST 5104-5137  
Rec. 20' mud

DST 6750-6775  
Rec. 15' mud  
DST 6775-6795  
Rec. 40' mud

Core 1816-8-1829.8  
DST 1815.7-1829.8  
Rec. 66m. mud, 18m. oil-cut  
mud, 36 m. mud cut oil.  
Bakken oilwell

Core 6625-6675  
DST 6620-6675  
Rec. 30' oil fl. mud, 84'  
mud, 168' salt water

1-7-5-12 W2  
KB. 1850'

12-27-1-6 W2  
KB. 569.7m

2-7-1-31 W1  
KB. 504.5m

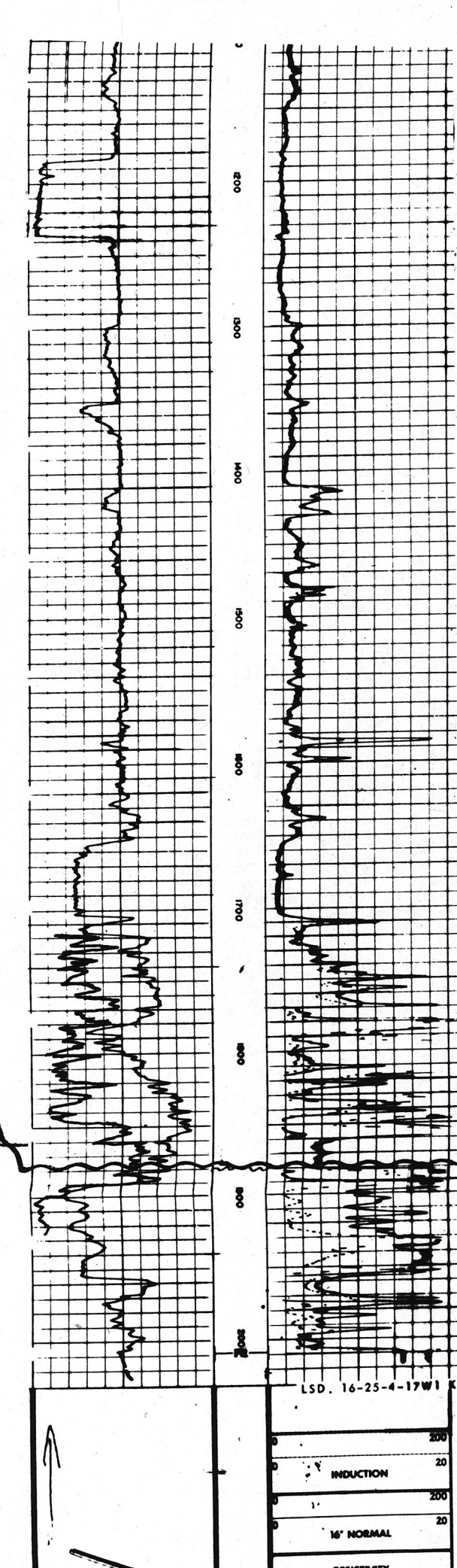
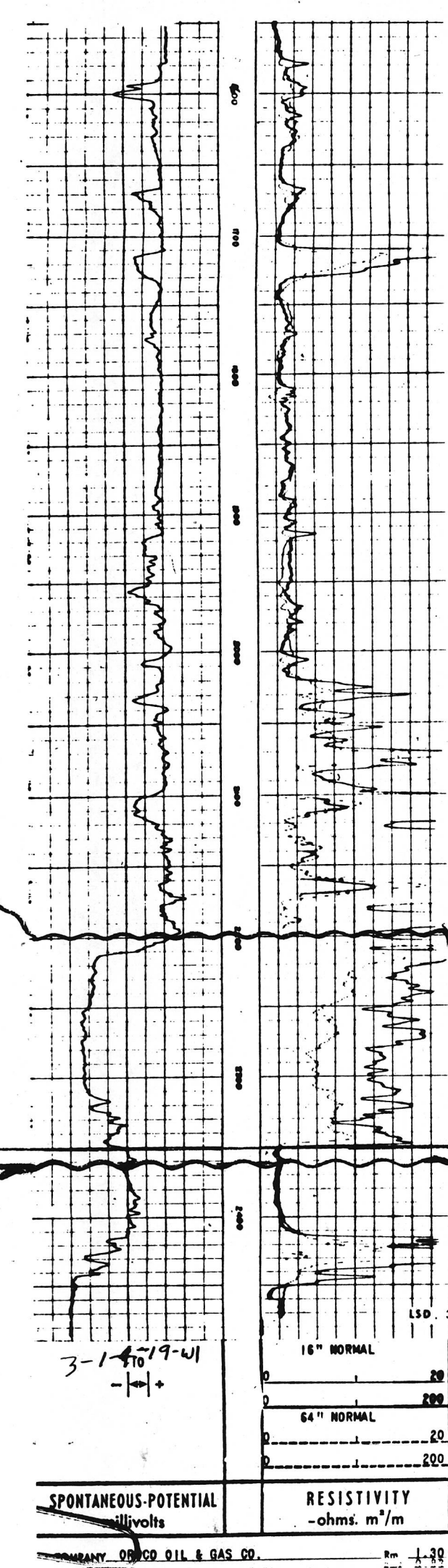
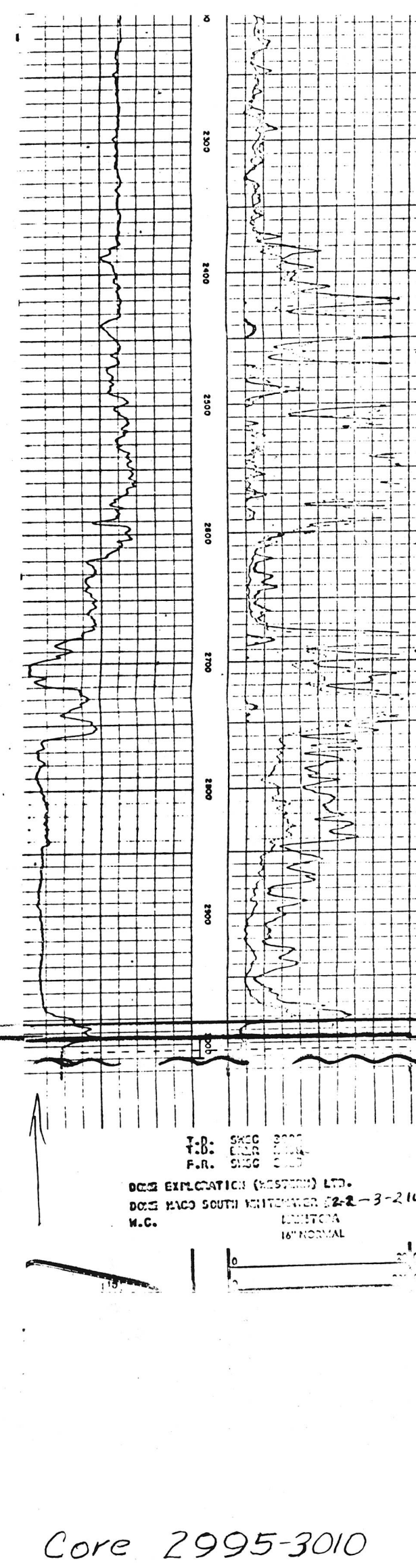
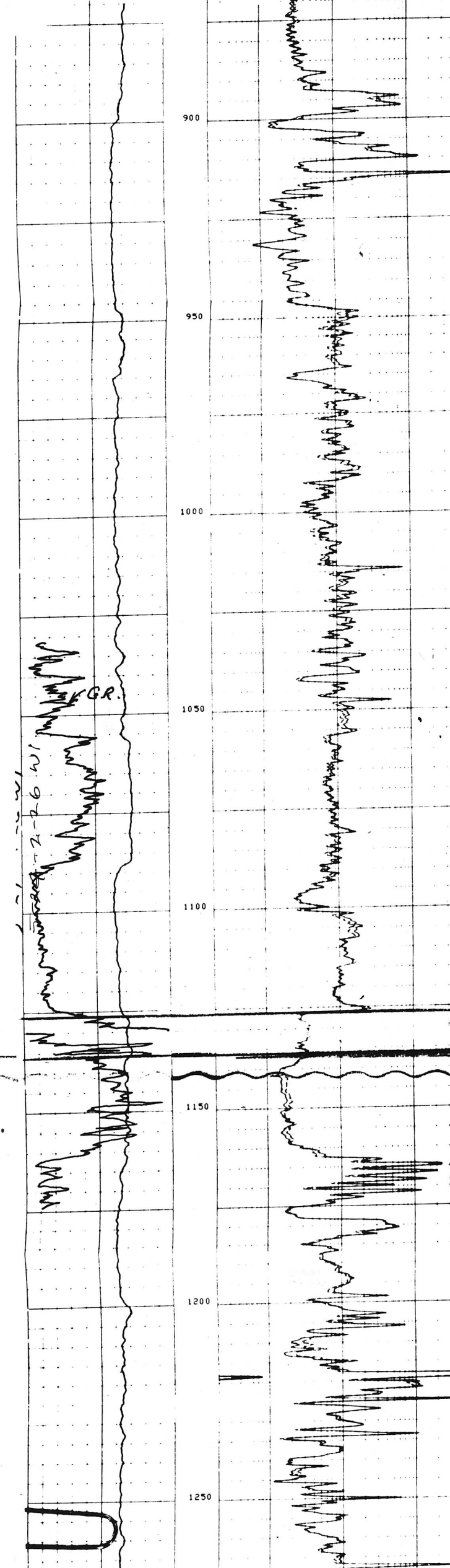
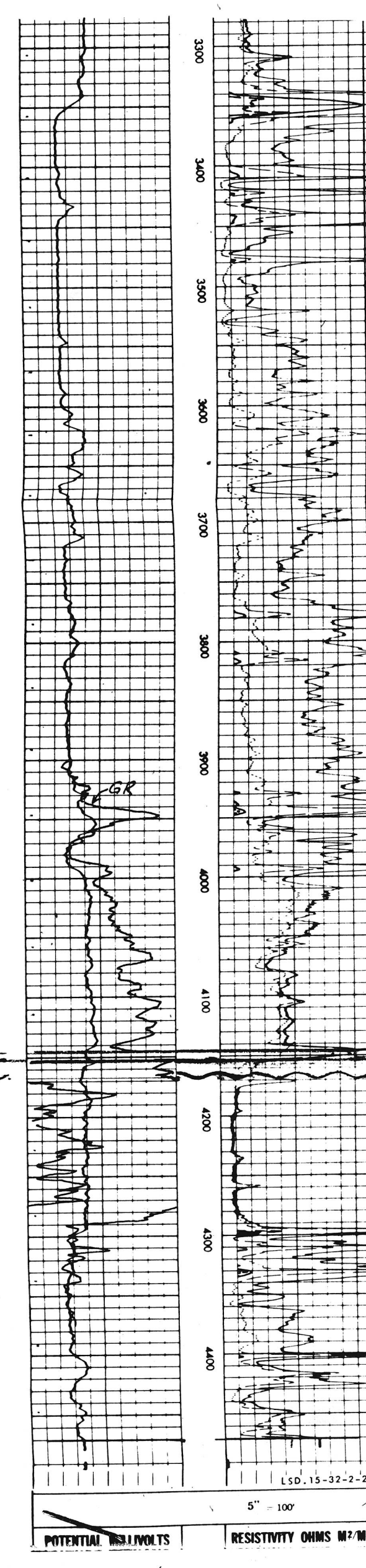
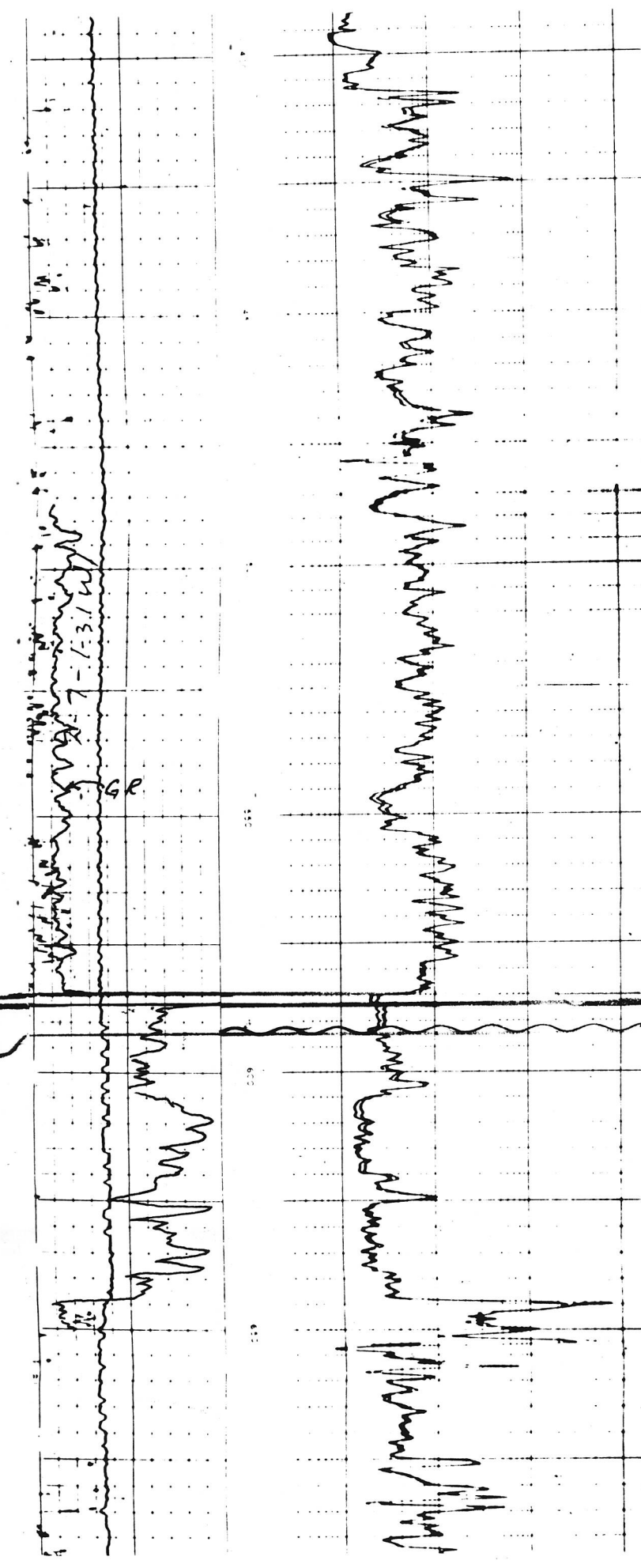
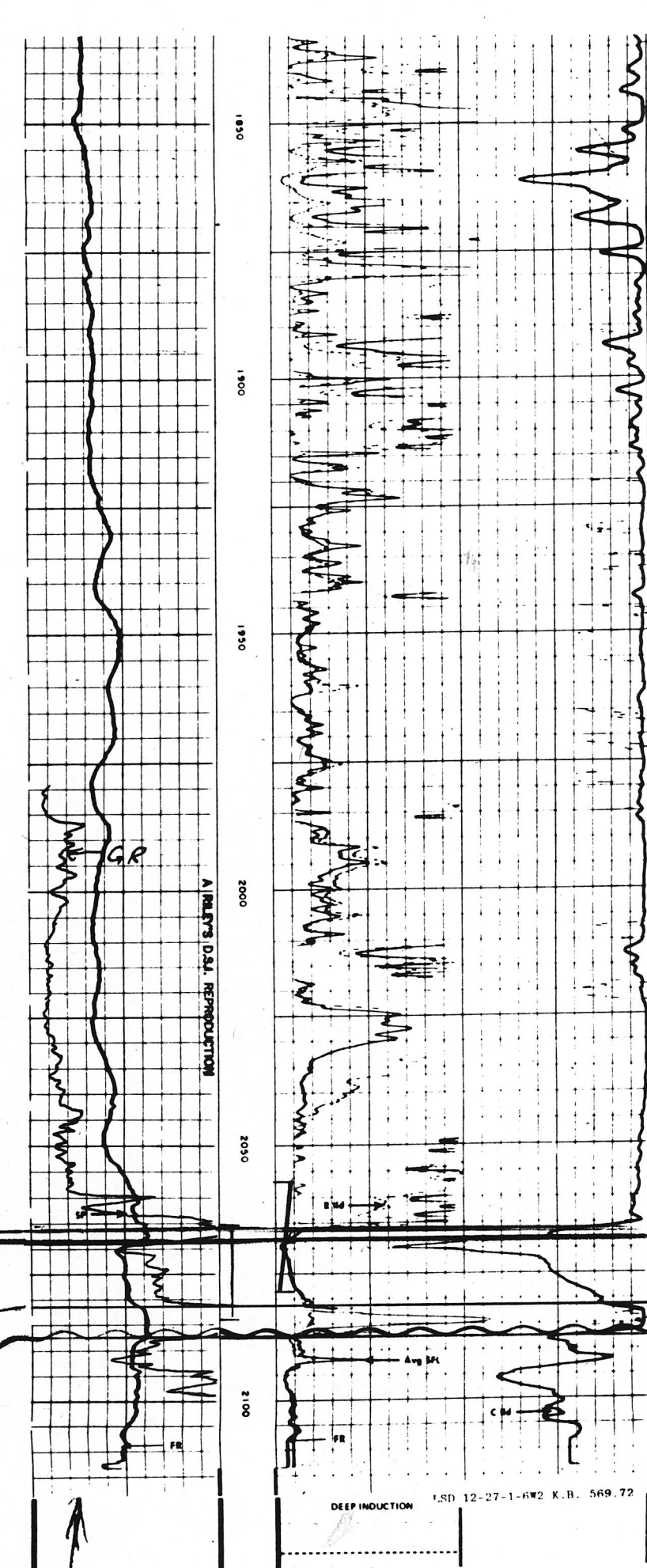
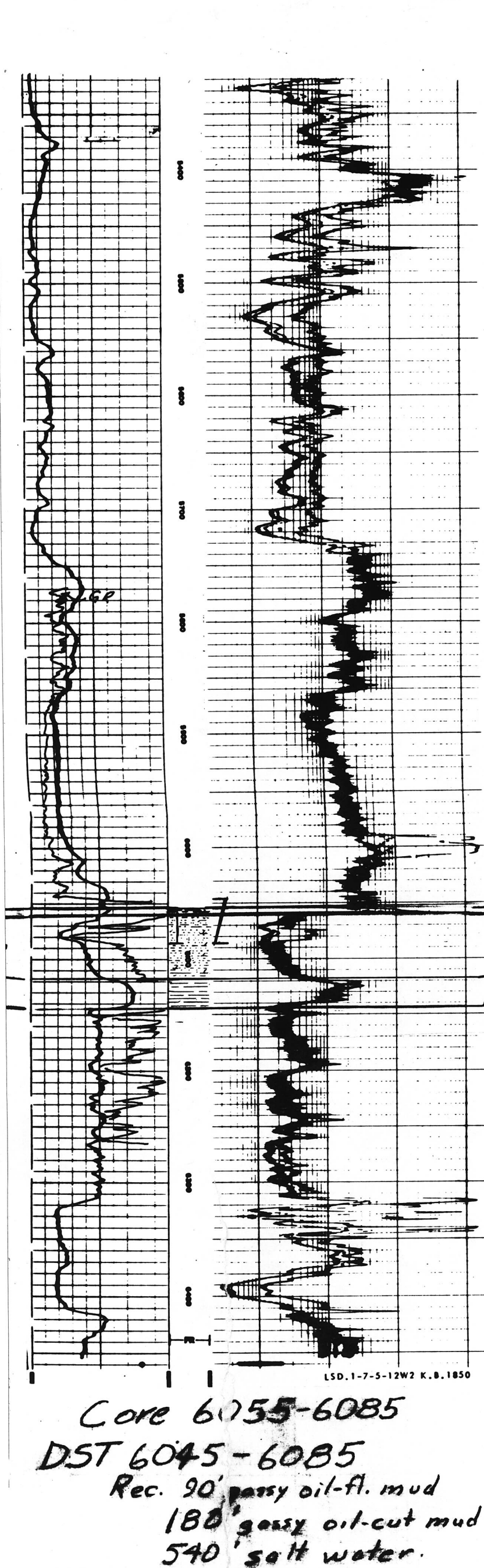
15-32-2-29 W1  
KB. 1581'

5-24-2-26 W1  
KB. 472.7m

2-2-3-21 W1  
KB. 1788'

3-1-4-19 W1  
KB. 1659'

16-25-4-17 W1  
KB. 1516'



Core 2066-2084  
DST 2057-2079  
Rec. 216m mud  
Bakken oilwell

Core 2995-3010

Core 6055-6085  
DST 6045-6085  
Rec. 30' gassy oil-fl. mud  
188' gassy oil-cut mud  
540' salt water.

OPEN FILE  
DOSSIER PUBLIC  
1123  
GEOLOGICAL SURVEY  
COMMISSION GÉOLOGIQUE  
OTTAWA

East

11th - Sask - Man Bakken  
W-E Cross Section #1