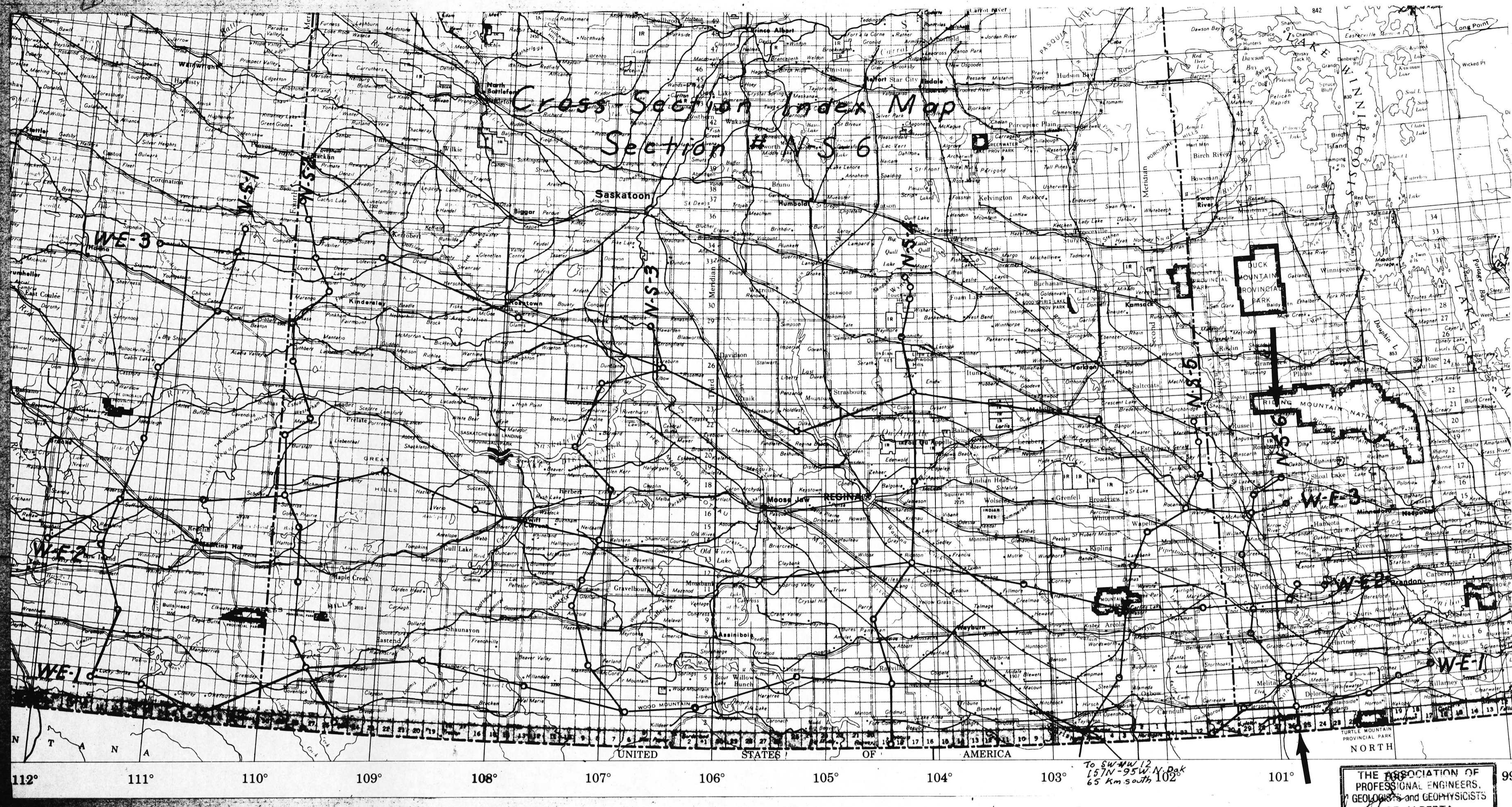


Bakken - Cross Section
N-5-6

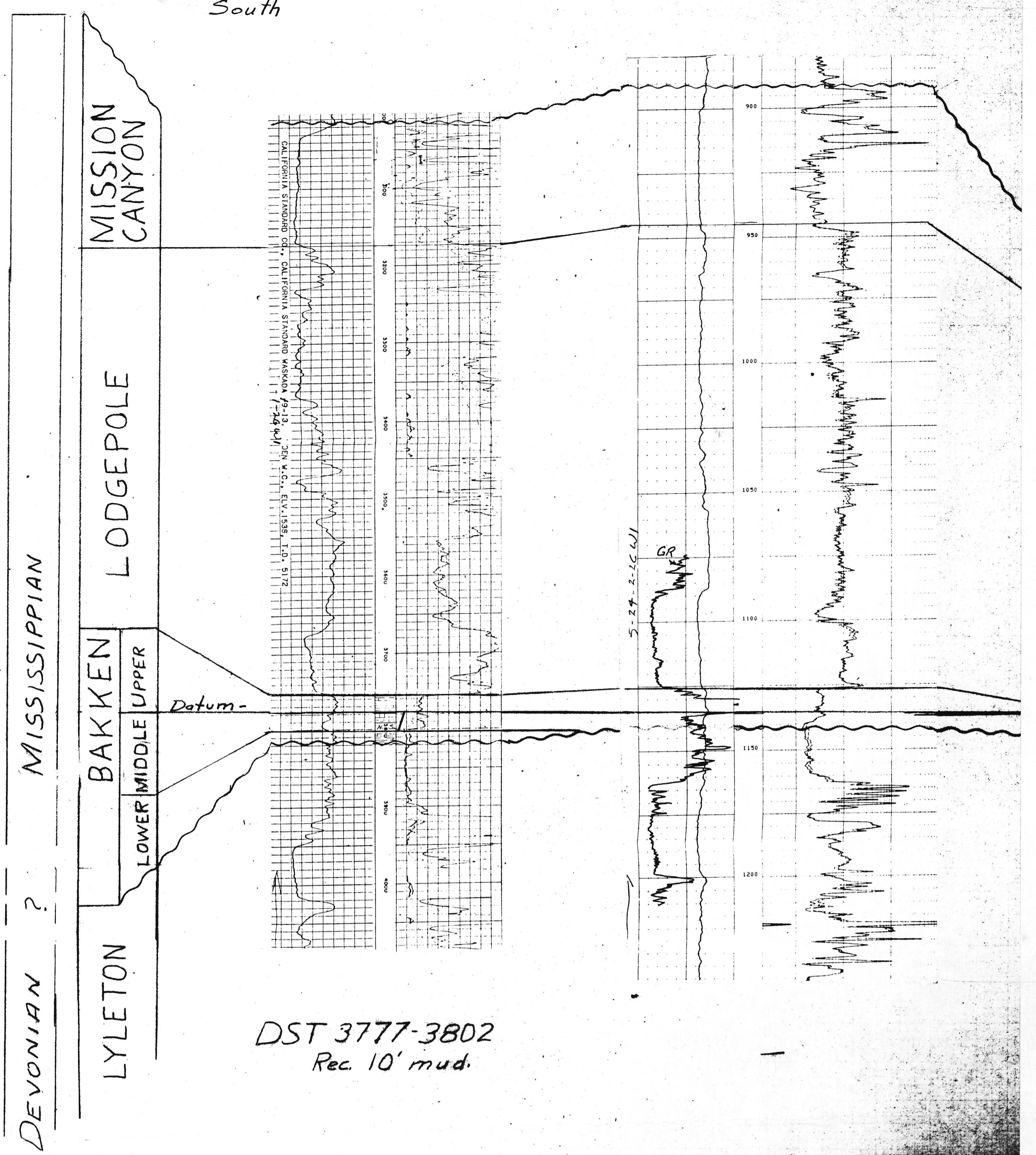
This map has been reprinted from a scanned version of the original map.
Reproduction par numérisation d'une carte sur papier.



THE ASSOCIATION OF PROFESSIONAL ENGINEERS, GEOLGISTS AND GEOPHYSICISTS OF ALBERTA
PERMIT NUMBER P 3850
H. C. HORN FORD EXPLORATION CONSULTANTS LTD.

9-13-1-26 W1
K.B. 1534'

5-24-2-26 W1
K.B. 472.7m



DST 3777-3802
Rec. 10' mud.

2-4-28 W1
K.B. 1416'

2-21-7-28 W1
K.B. 1618'

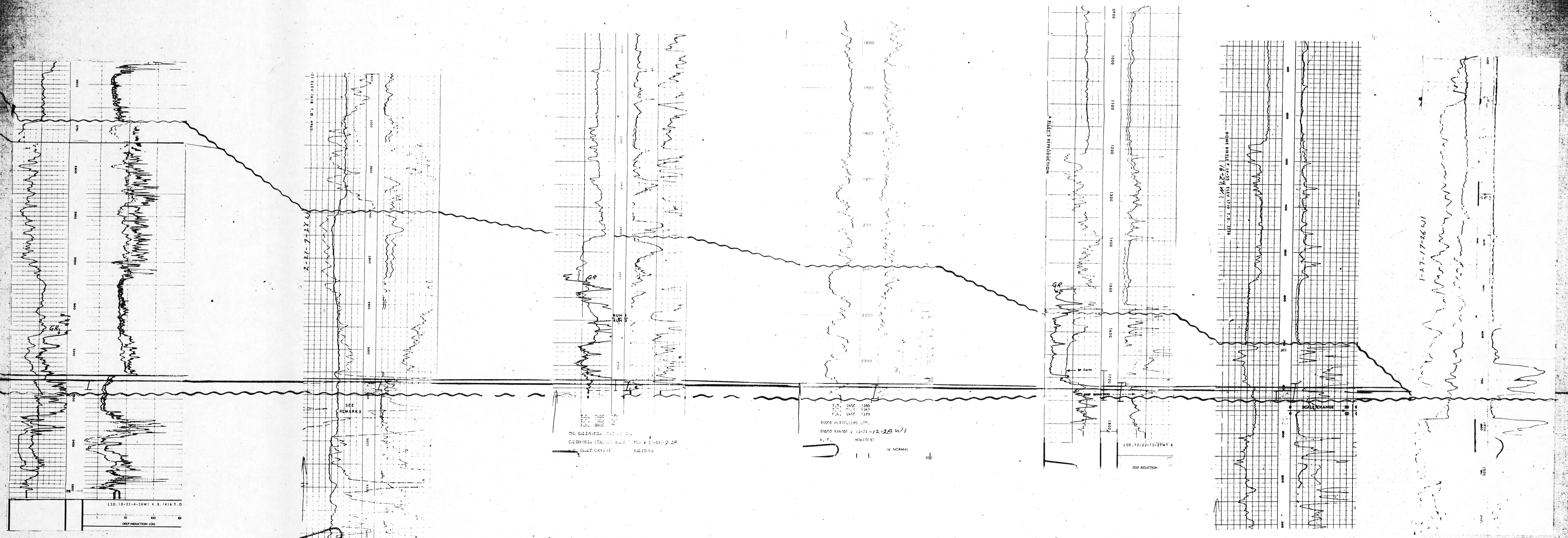
13-14-9-28 W1
K.B. 1631'

13-21-12-28 W1
K.B. 1639'

12-22-15-27 W1
K.B. 1555'

14-35-16-27 W1
K.B. 1710'

1-27-17-27 W1
K.B. 1710'



DST 3260-3280
Rec. 5' gassy oil-fl mud

DST 3072-3088
Rec. 7' mud.

Core 2730-2755
DST 2735-2755
Rec. 3' light oil,
30' oil-cut mud.

DST 2352-2382
Rec. 660' salt water

Core 1685-1750
DST 1710-1750
Rec. 70' sl oil-cut
mud

Core 1809-1828
DST 1790-1828
Rec. 204' muddy
salt water.

OPEN FILE
DOSSIER PUBLIC
1123
GEOLOGICAL SURVEY
COMMISSION GEOLOGIQUE
OTTAWA