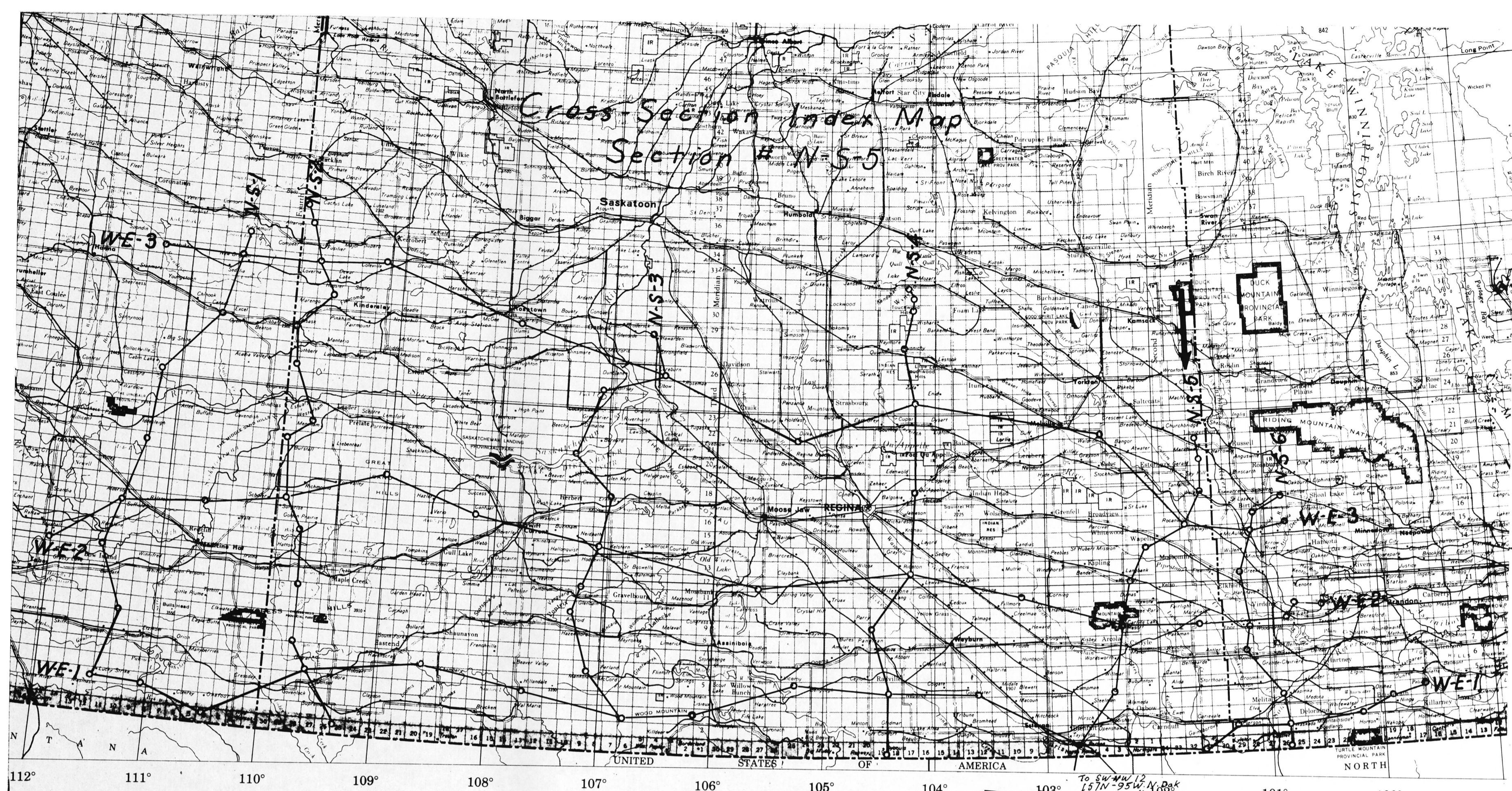
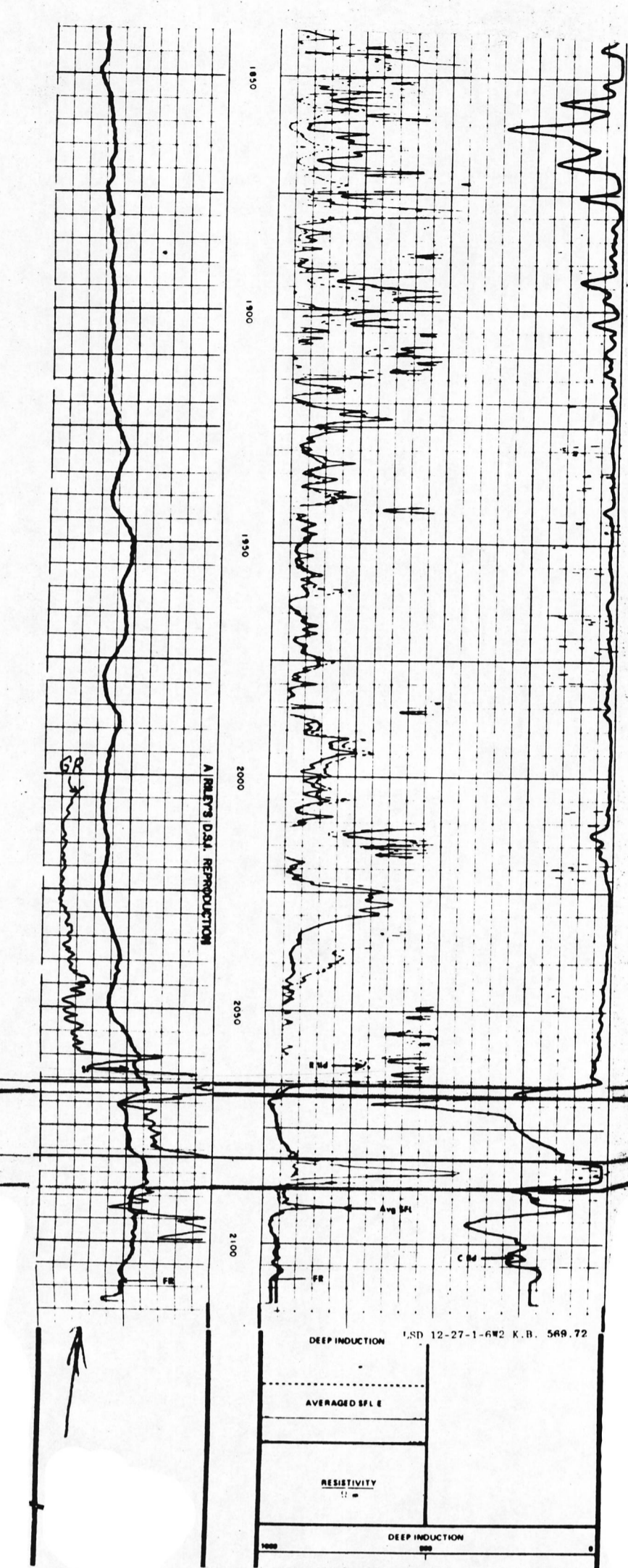
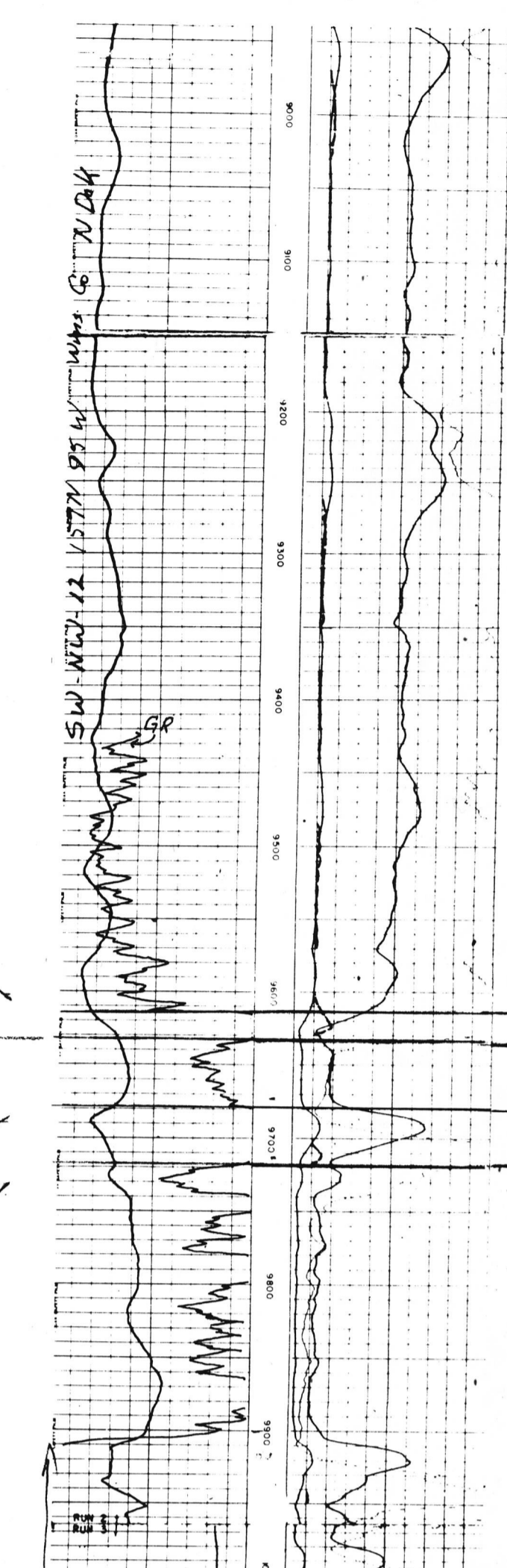


South



MISSISSIPPIAN
LODGEPOLE
BAKKEN
LOWER MIDDLE UPPER
Datum
TORQUAY
DEVONIAN ?



Core 2066-2084 m
DST 2057-2079 m
Rec 216 m mud
Bakken oilwell.

Type well for Bakken

1-26-9-3 W2
K.B. 2421'

15-28-12-2 W2
K.B. 2189'

6-33-14-1 W2
K.B. 1973'

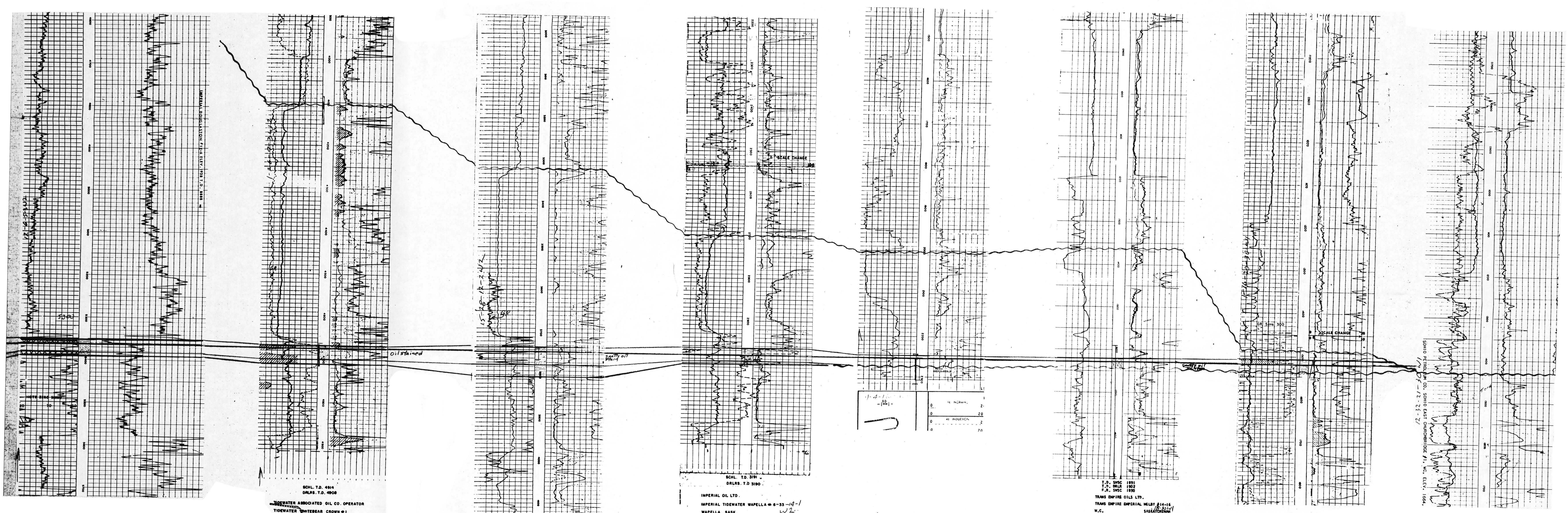
4-4-16-31 W1
K.B. 1754'

14-16-18-30 W1
K.B. 1599'

1-16-20-30 W1
K.B. 1647'

12-32-21-30 W1
K.B. 1674'

North



Core 4662-4907

Core 3739-3762

Core 2966-3006
DST 2970-2991
Rec. 1100' sltyassy brackish water

Core 2250-2301
Bakken oilwell

Core 1590-2002

Core 1478-1548
DST 1505-1555
Rec. 600' muddy water

OPEN FILE
DOSSIER PUBLIC
1123
GEOLOGICAL SURVEY
COMMISSION GEOLOGIQUE
OTTAWA