

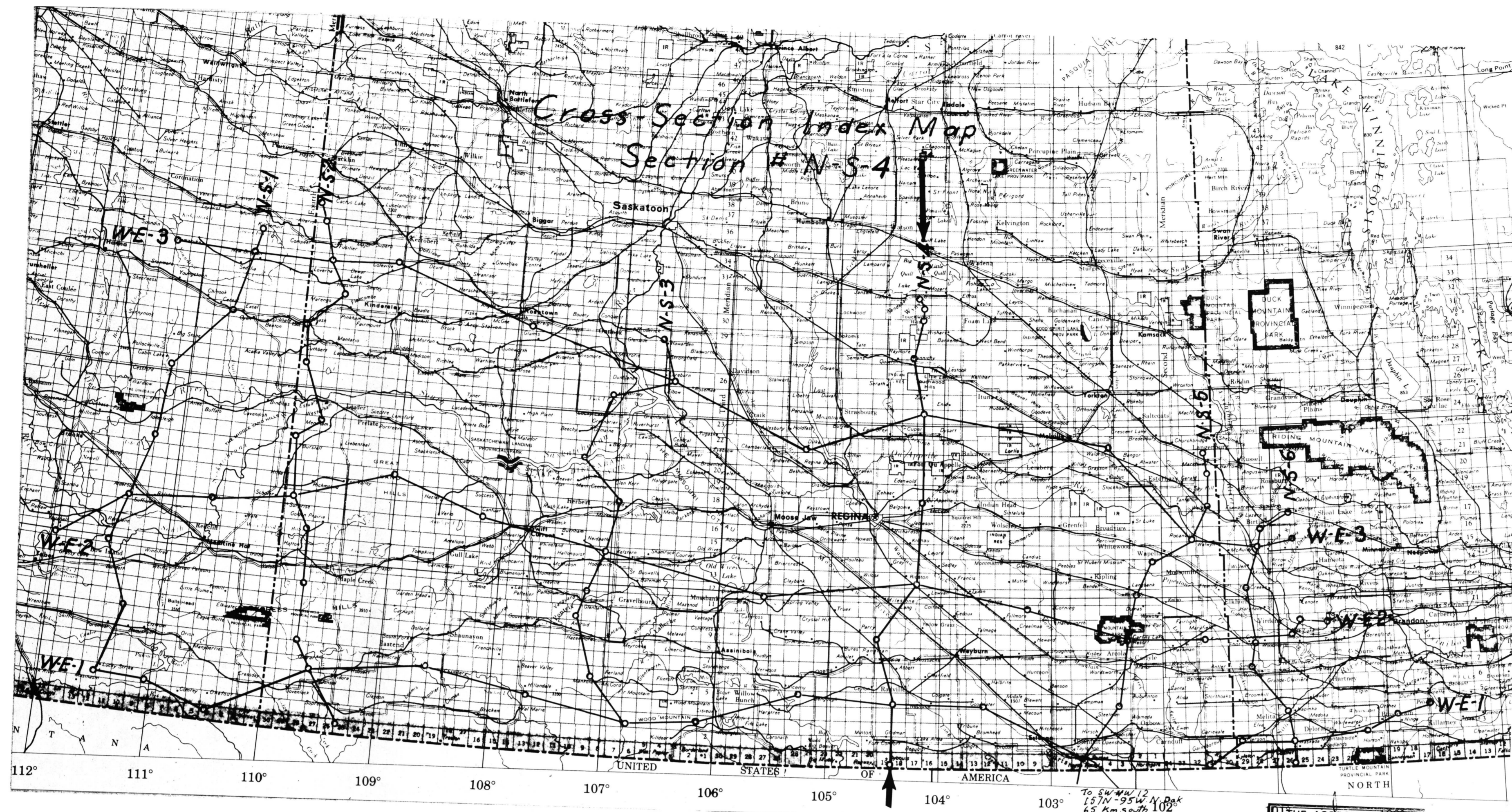
Bakken - Cross Section  
# N-S-4

6-13-2-19 W2  
KB. 2459'

6-7-5-18 W2  
KB. 2452'

South

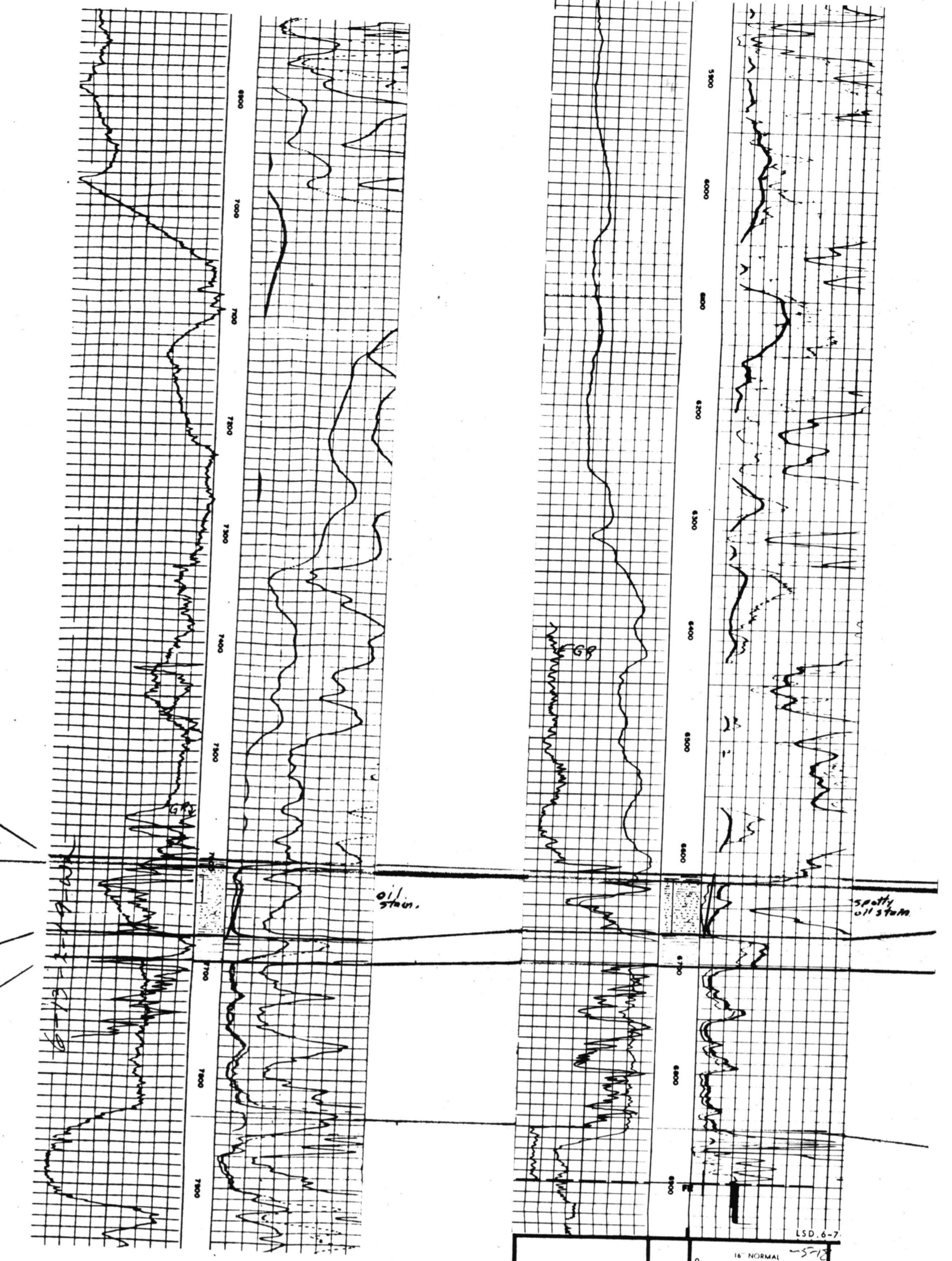
This map has been reprinted from a scanned version of the original map.  
Reproduction par numérisation d'une carte sur papier.



OF THE ASSOCIATION OF  
PROFESSIONAL ENGINEERS,  
GEOLOGISTS AND GEOPHYSICISTS  
OF ALBERTA  
PERMIT NUMBER  
P 3630  
H. J. HORNBY EXPLORATION  
CONSULTANTS LTD.

DEVONIAN ? MISSISSIPPIAN

TORQUAY BAKKEN LOWER MIDDLE UPPER LODGEPOLE



Core 7615-7638  
DST 7625-7665  
Rec 120' sl/salty mud

Core 6625-6675  
DST 6620-6675  
Rec 84' mud 30' oil-  
fl. mud 168' salt water

2-19-9-19 W2  
KB. 2136'

12-11-13-17 W2  
KB. 1902'

6-29-18-16 W2  
KB. 1911'

4-28-24-16 W2  
KB. 2705'

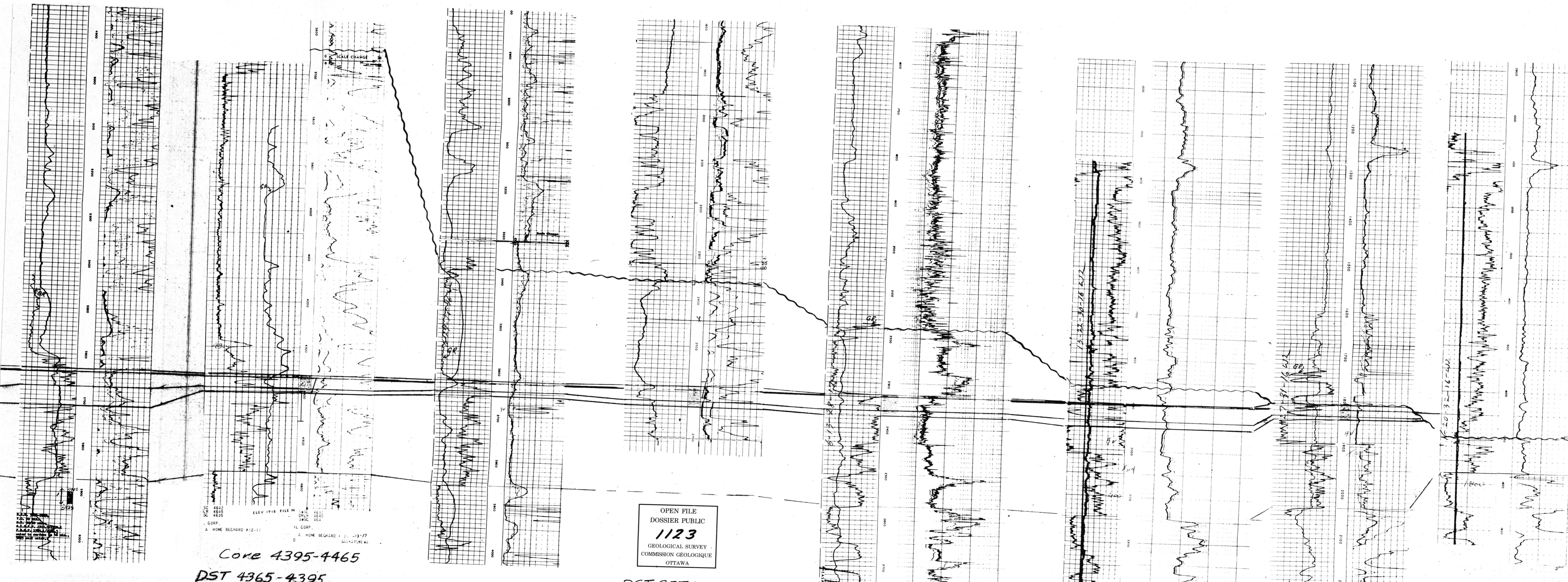
6-13-28-17 W2  
K.B. 2127'

13-22-30-16 W2  
KB. 2175'

1-27-31-16 W2  
KB. 2060

1-20-32-16 W2  
KB. 1922

North



Core 4395-4465  
DST 4365-4395  
Rec. 1350' brack. water

OPEN FILE  
DOSSIER PUBLIC  
1123  
GEOLOGICAL SURVEY  
COMMISSION GEOLOGIQUE  
OTTAWA  
DST 2576-2611  
Rec. 780' salt  
water & mud