

Bakken - Cross Section  
# N-5-2

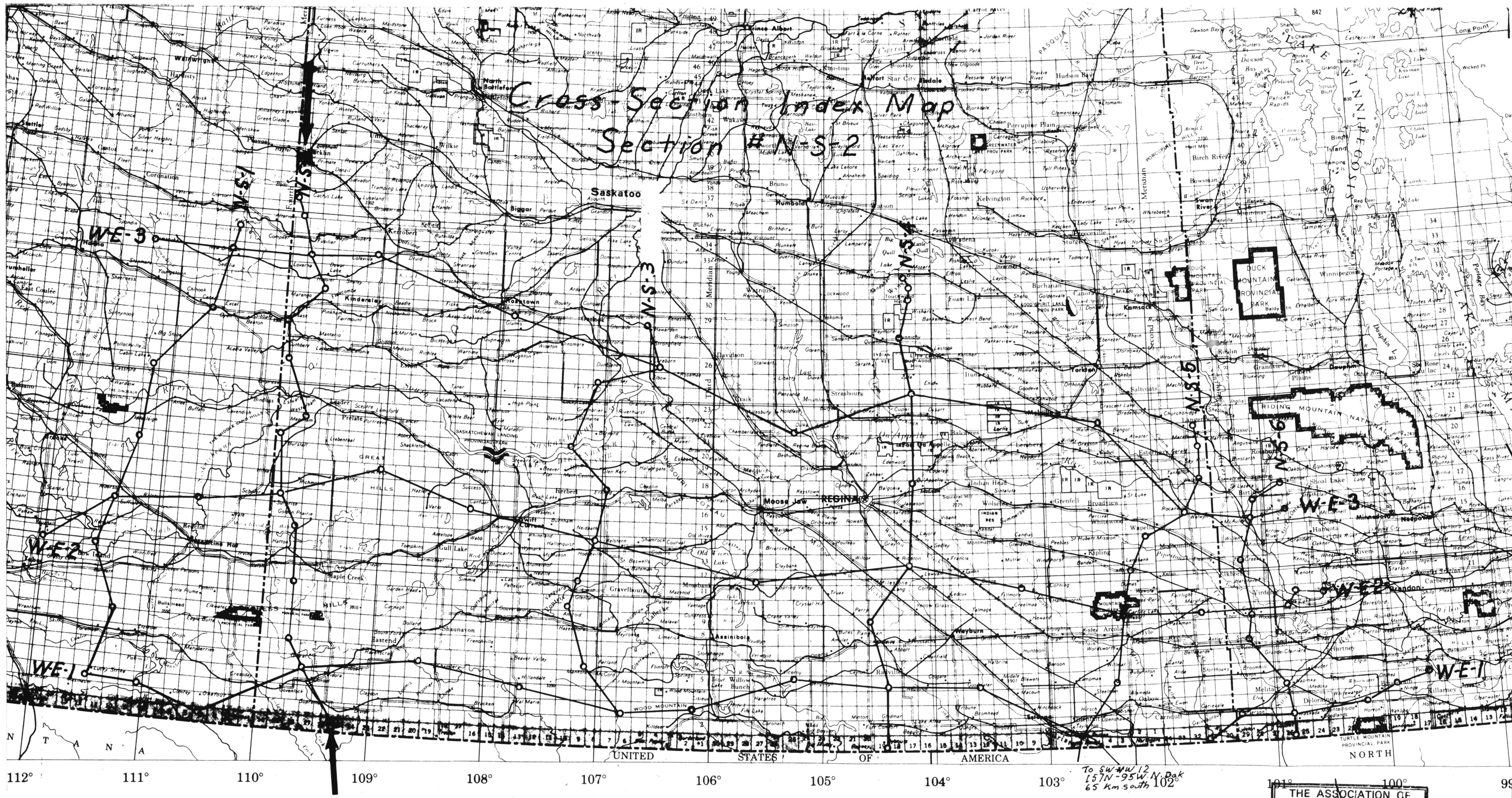
LIBRARY  
FEB 6 1985  
GEOLOGY  
DIST. SEMINARY &  
PETROLEUM GEOLOGY

AG-30-1-25 W3  
KB. 2940

14-7-5-27 W3  
KB. 3194

4-A-7-28 W3  
KB. 3810

South



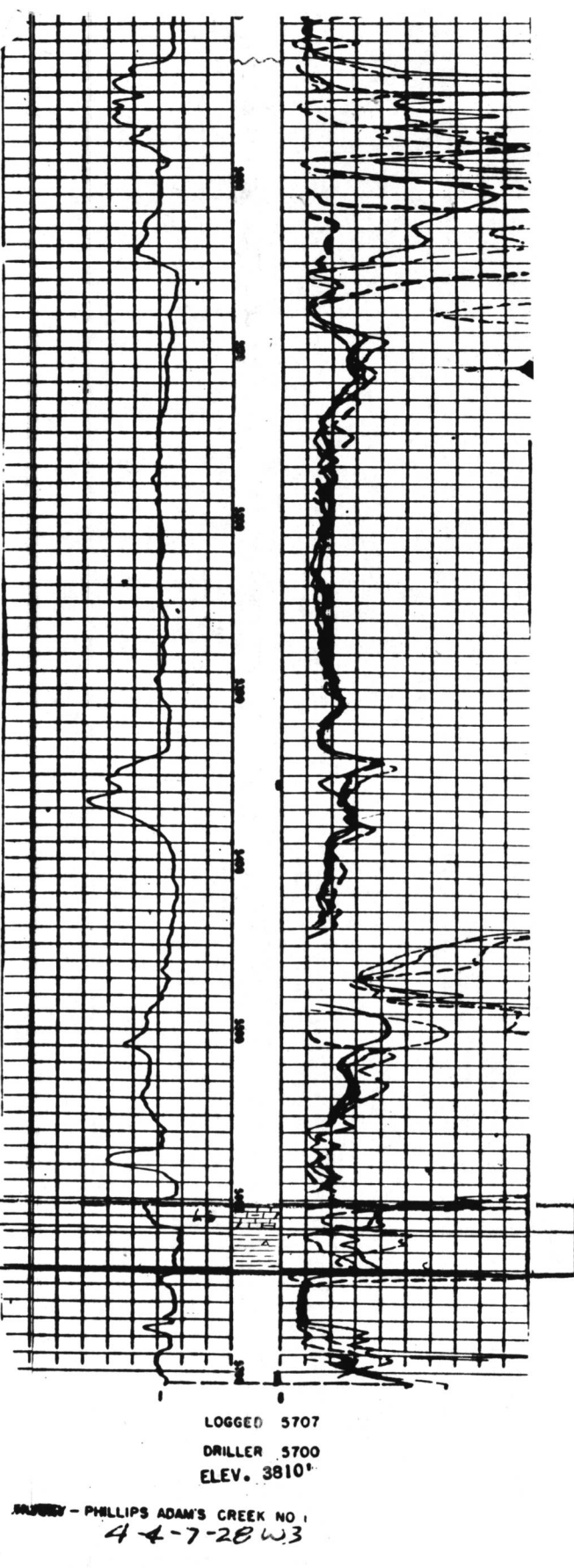
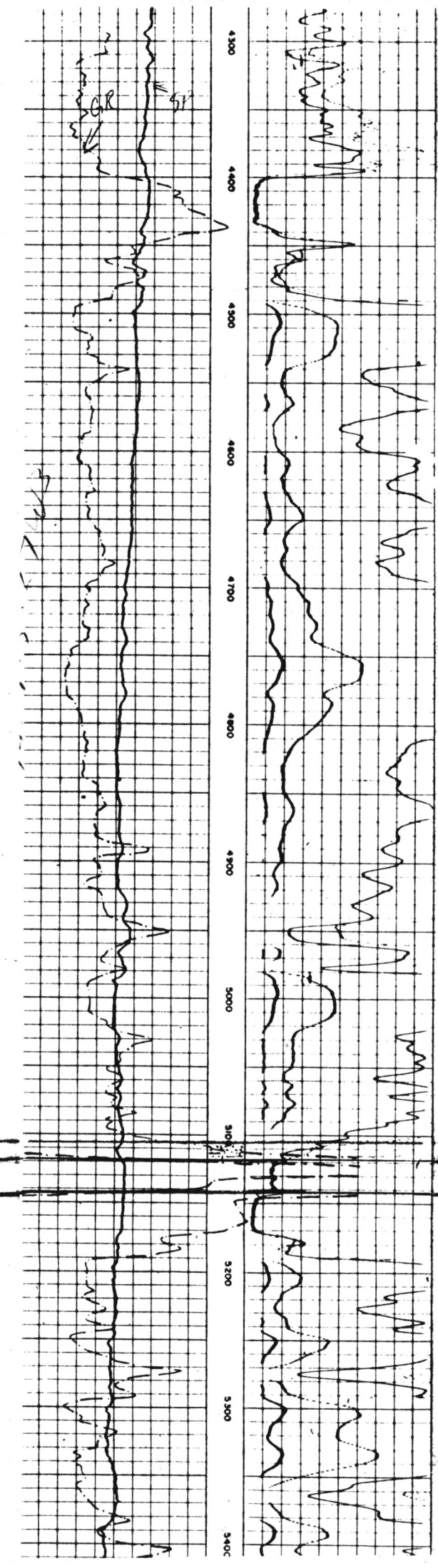
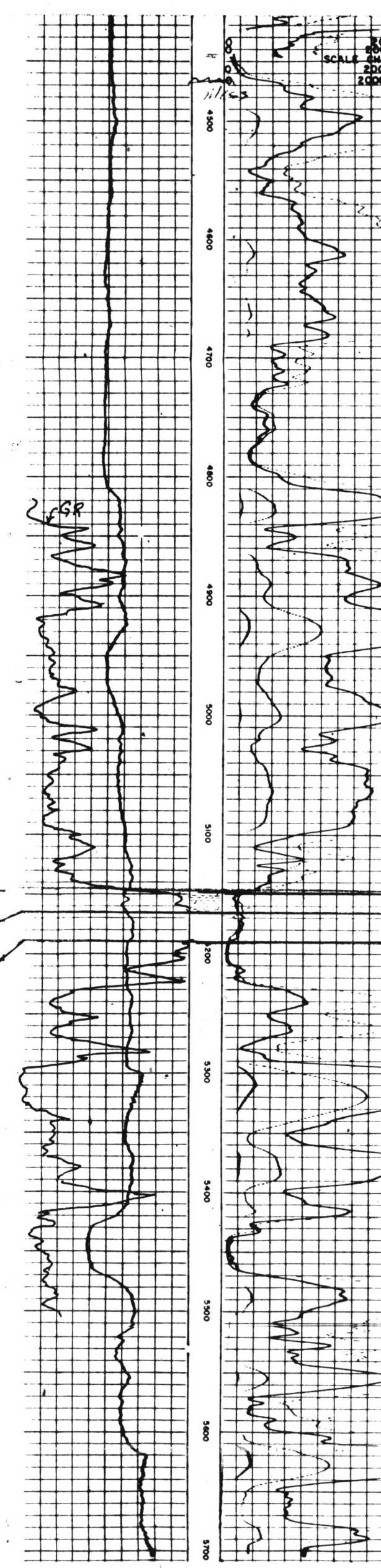
MISSISSIPPIAN

LODGEPOLE

BAKKEN LOWER MIDDLE UPPER

STETTLER VALLEY

DEVONIAN



1:1 SCALE  
SHELL OIL COMPANY  
SHELL RESEARCH AND INTELLIGENCE  
DIVISION  
HOUSTON, TEXAS

11-23-8-26 W3  
KB. 3787

13-33-10-28 W3  
KB. 2812

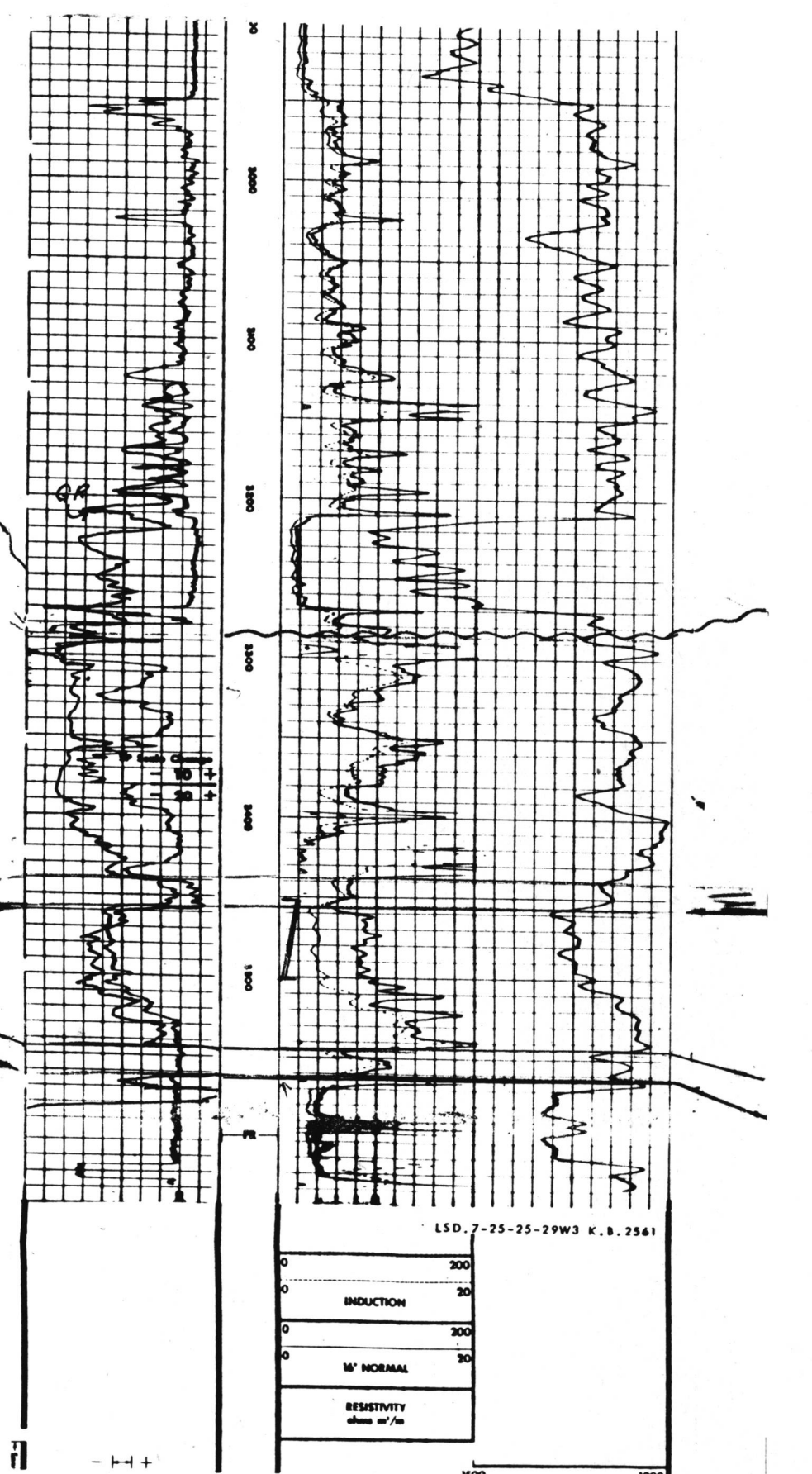
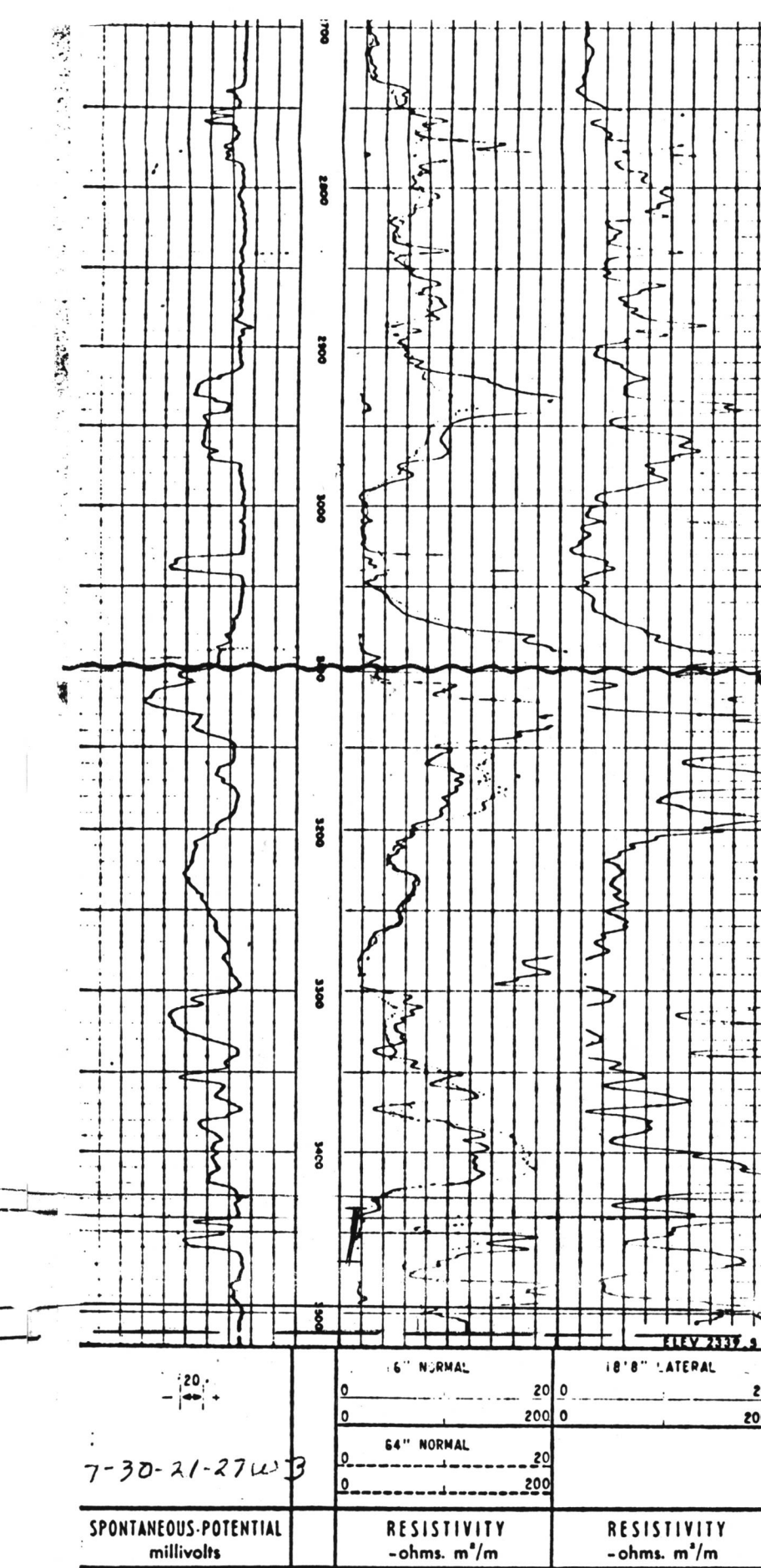
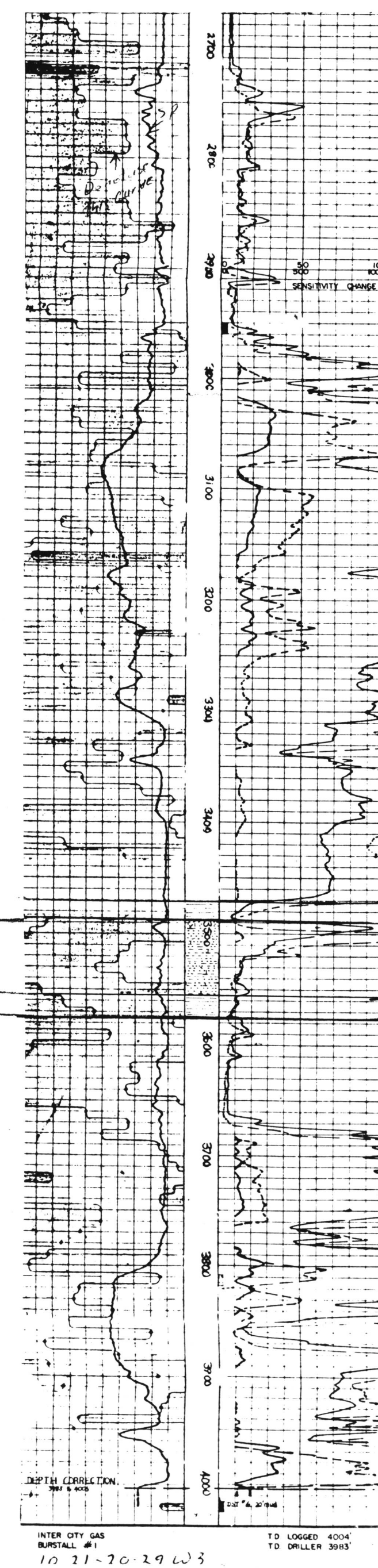
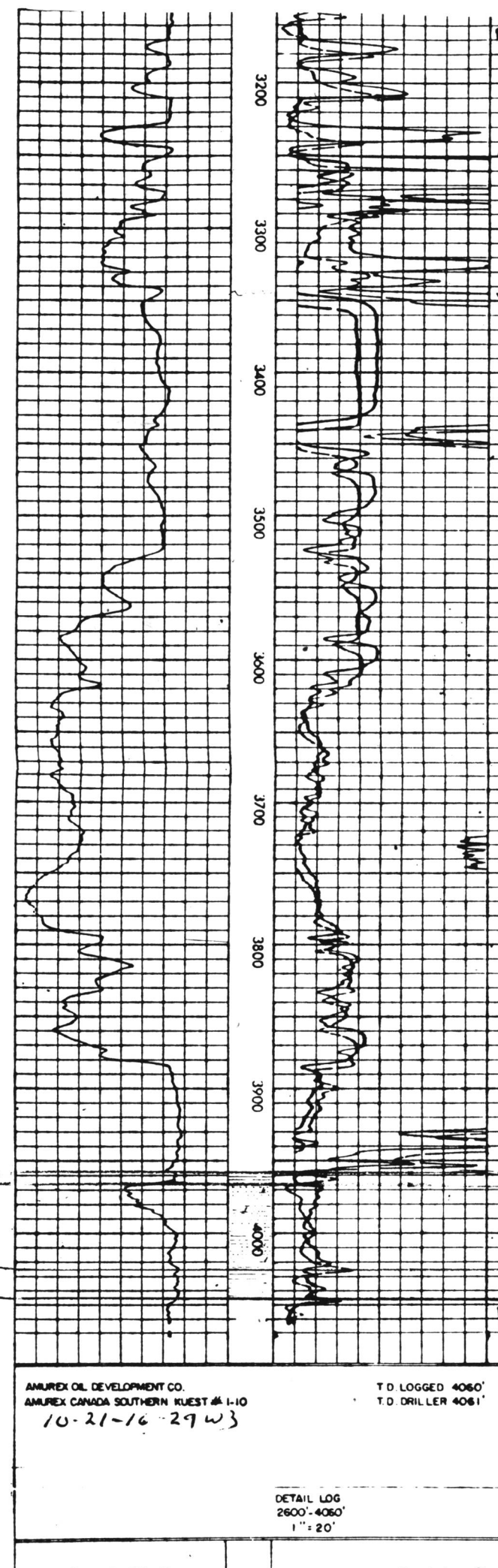
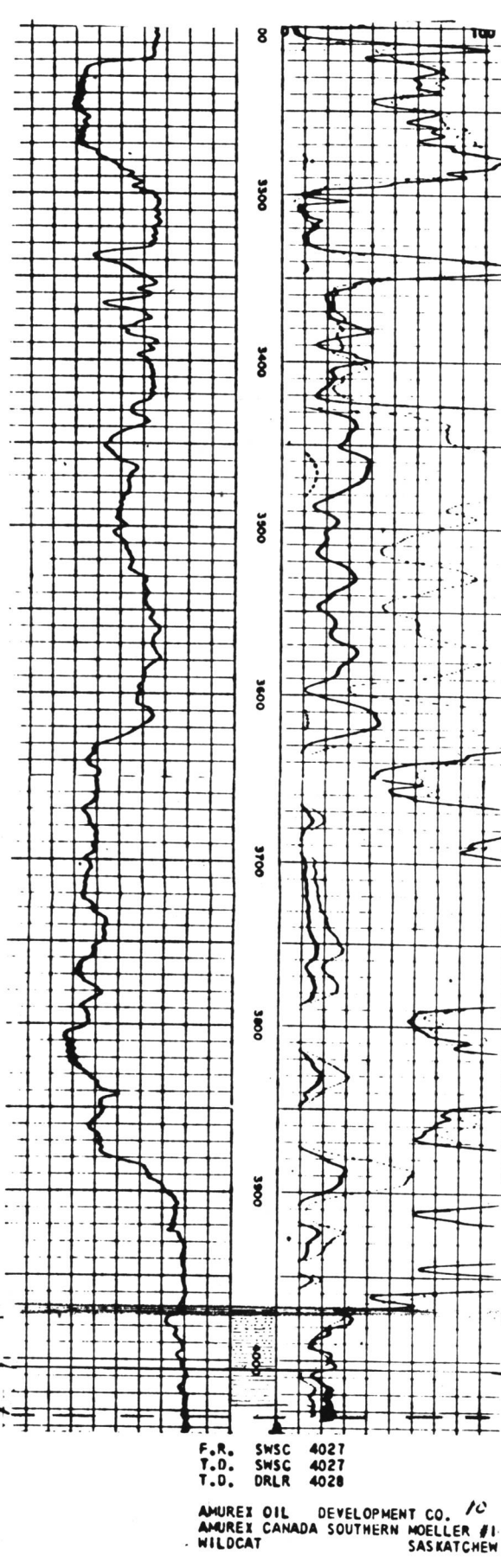
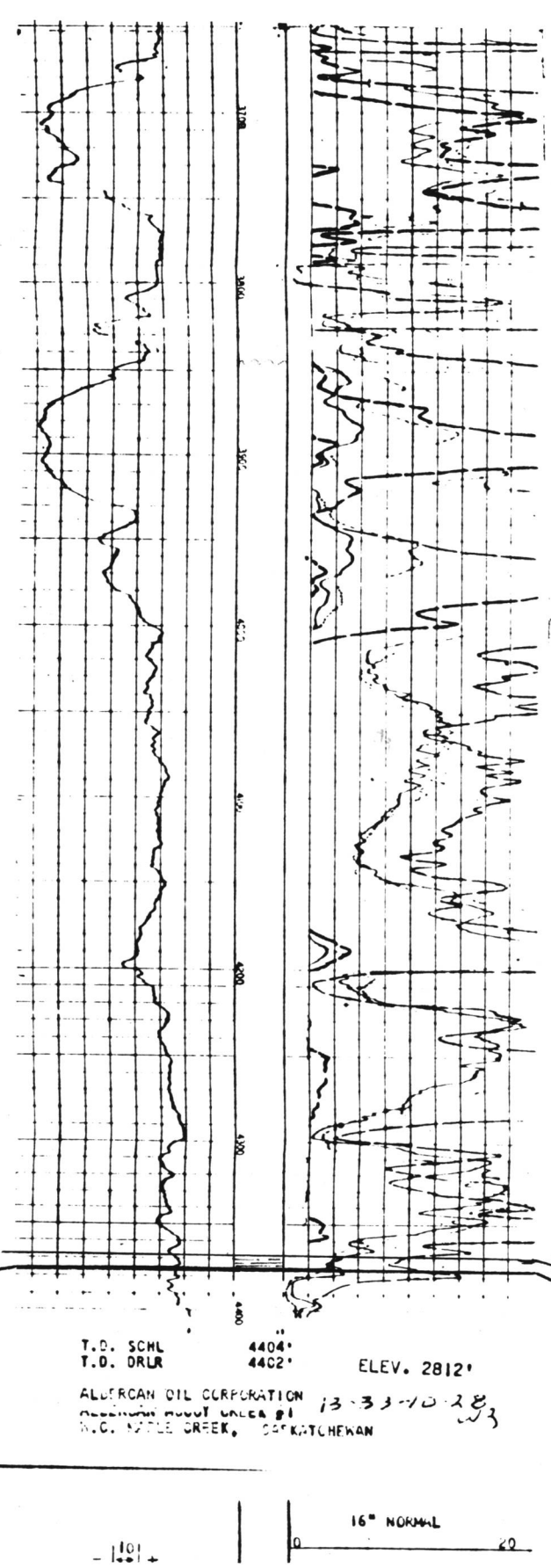
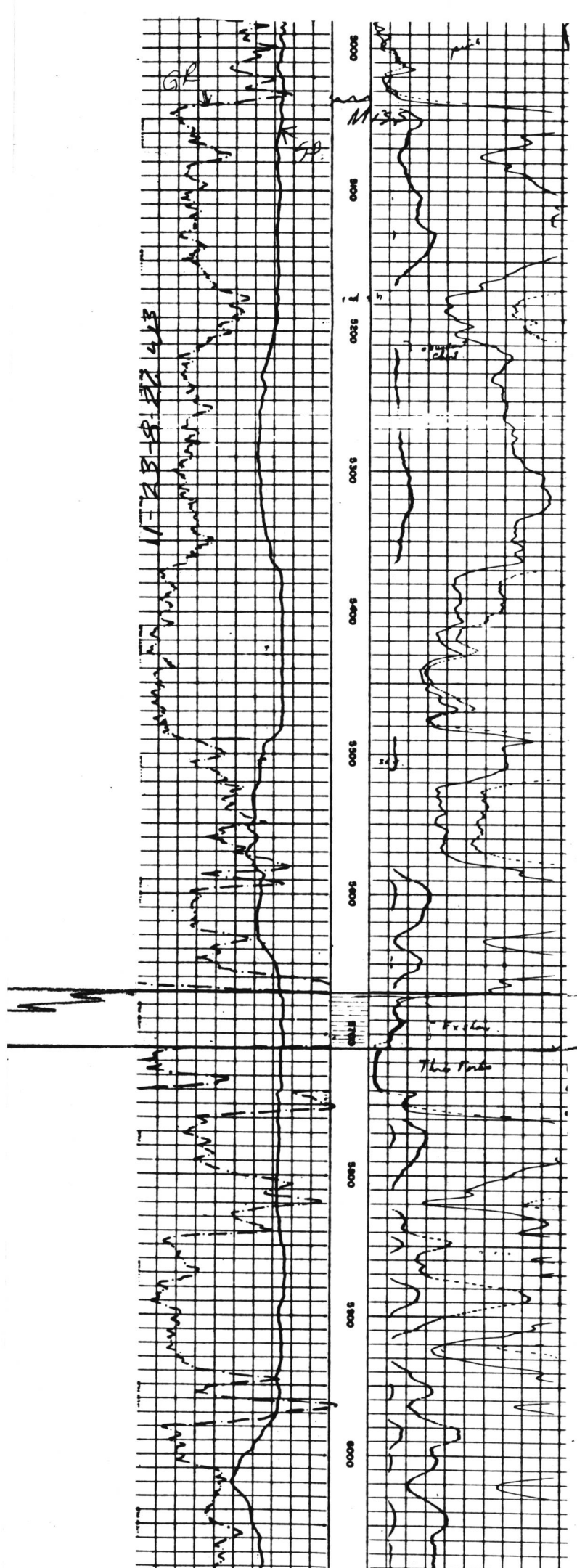
10-21-14-28 W3  
KB. 2495

10-21-16-29 W3  
KB. 2632

10-21-20-29 W3  
KB. 2366

7-30-21-27  
KB. 2340

7-25-25-29 W3  
KB. 2561



DST 3436-3468  
Rec. 210' sal. wtr cut mud

DST 3450-3500  
Rec. 2871' salt water

10-1-28-29 W3  
KB. 2277

10-27-28-27 W3  
KB. 2354

11-17-30-26 W3  
KB. 2352

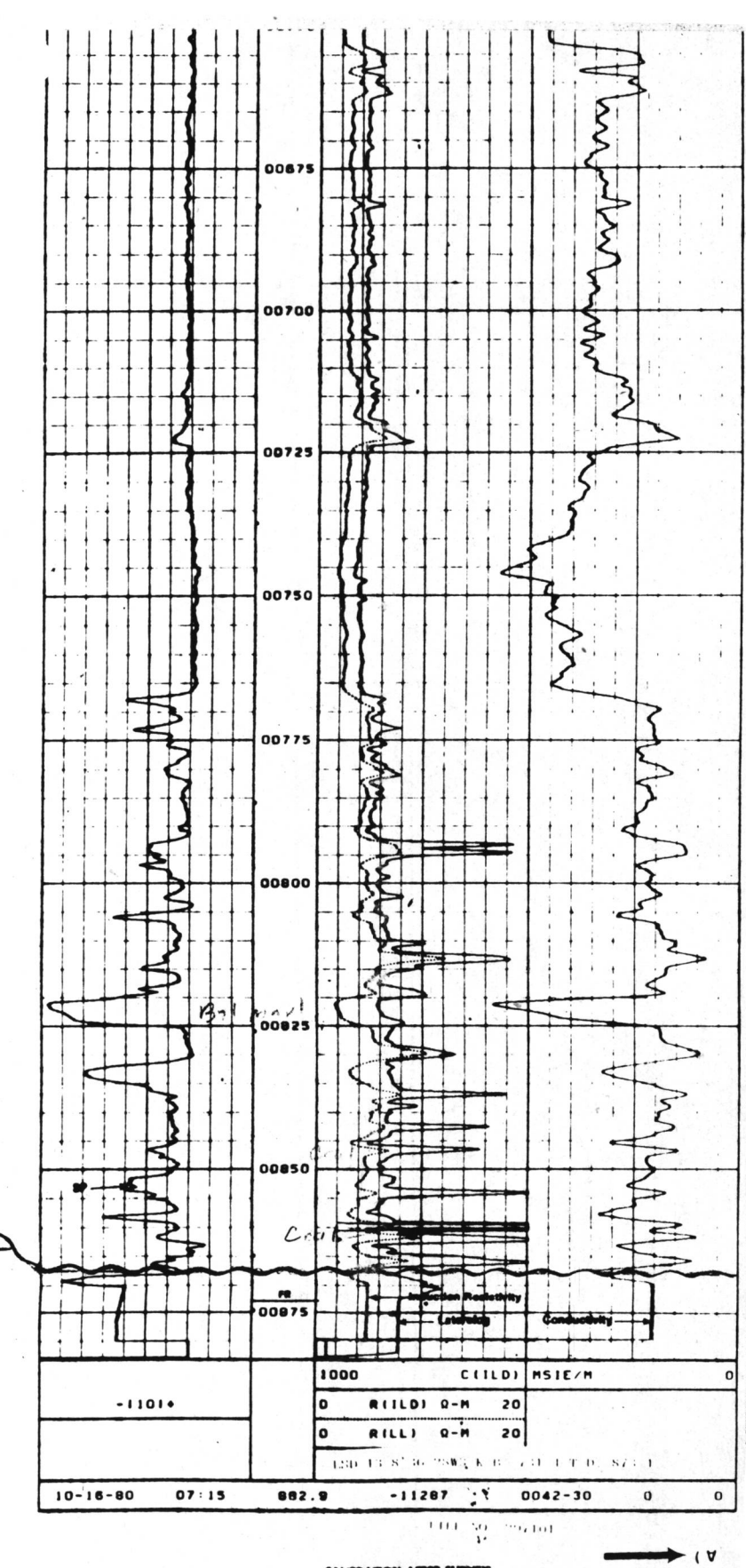
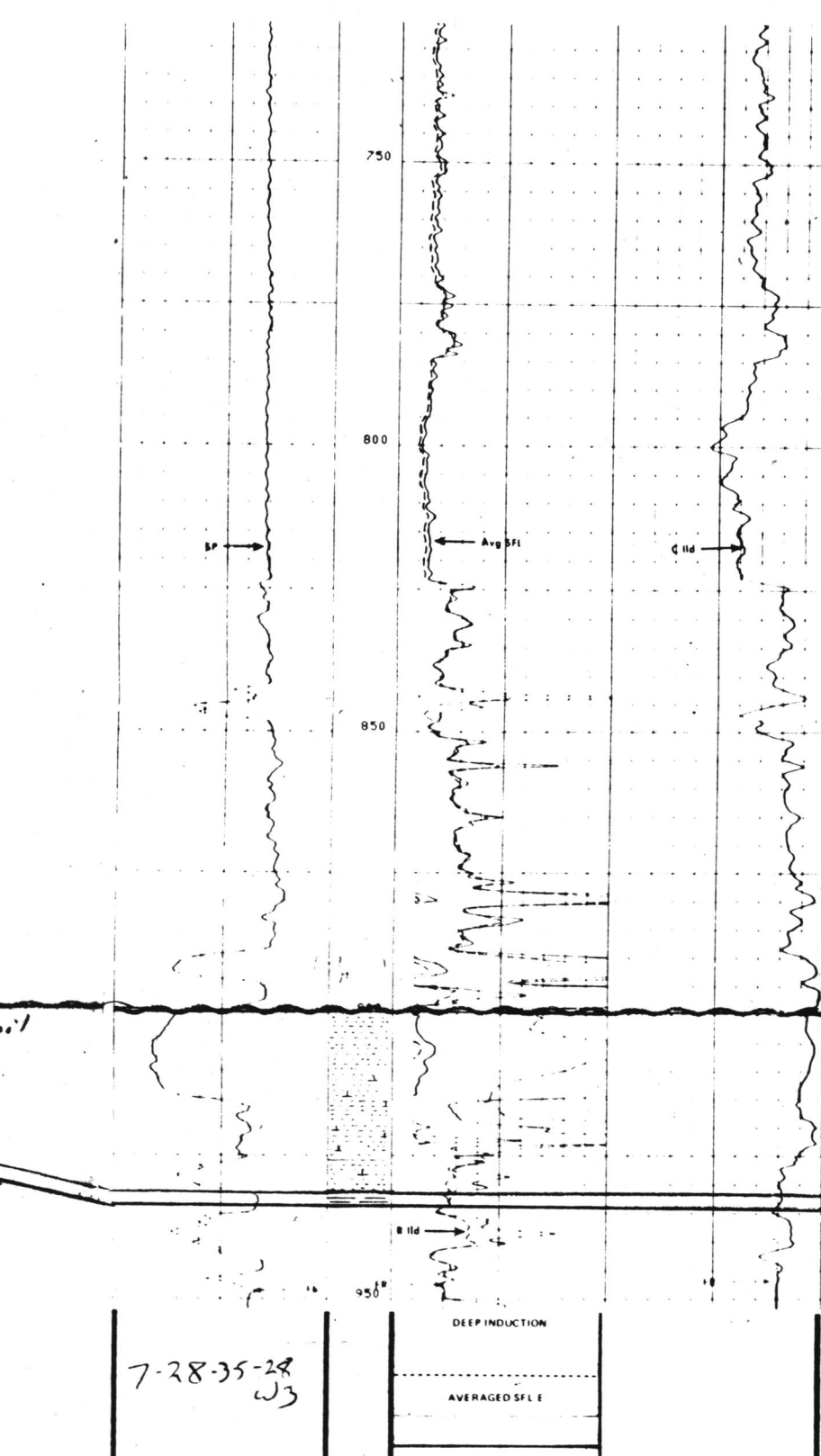
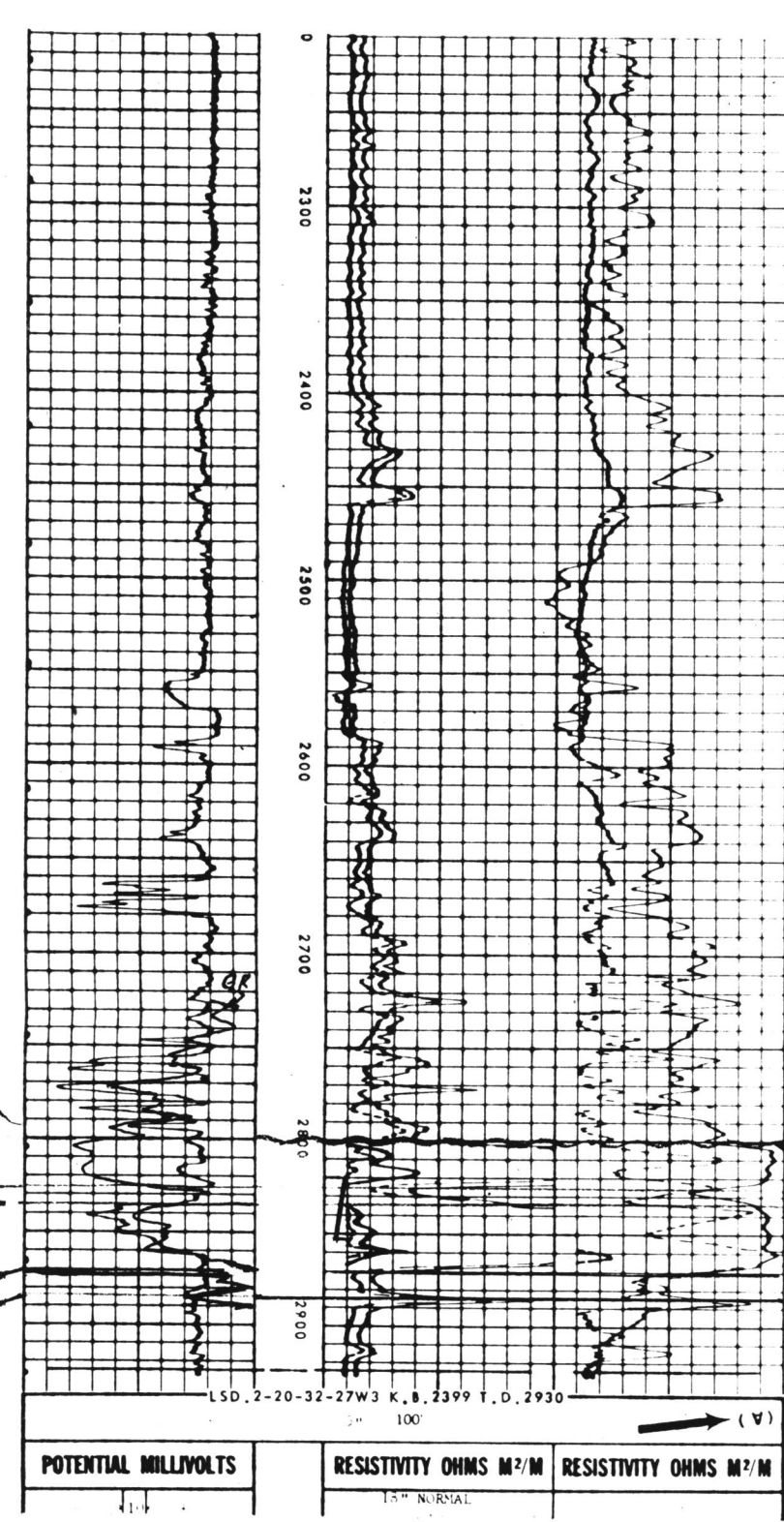
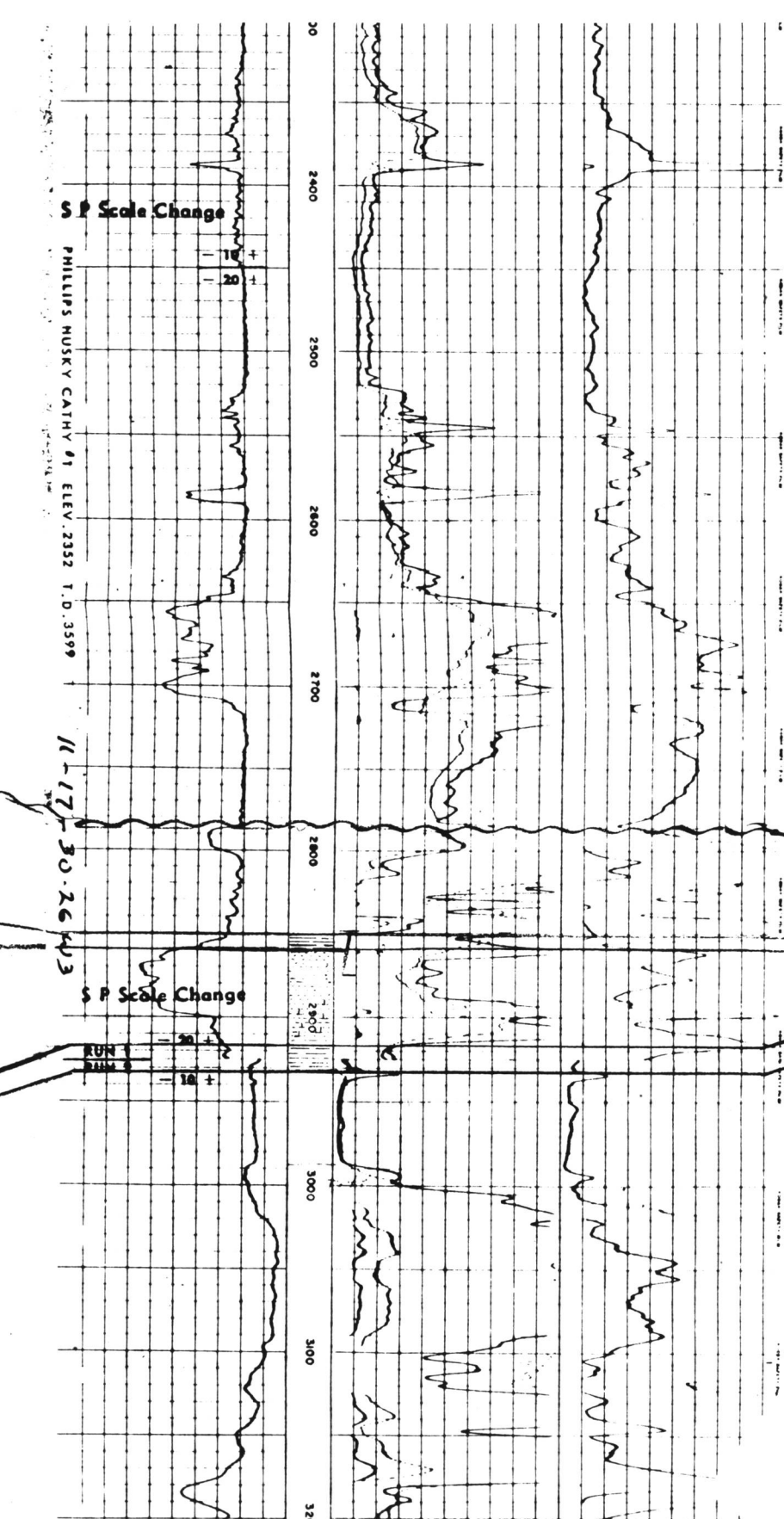
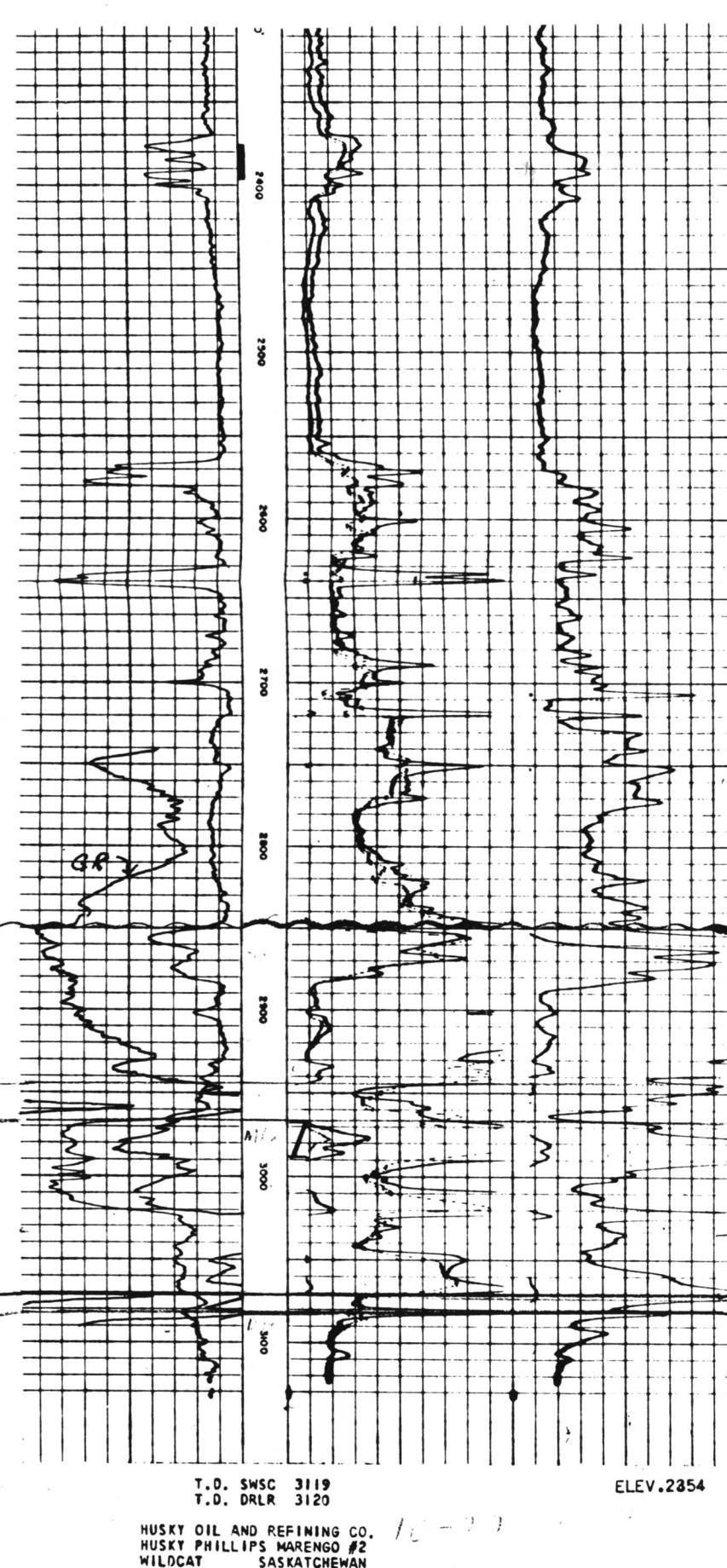
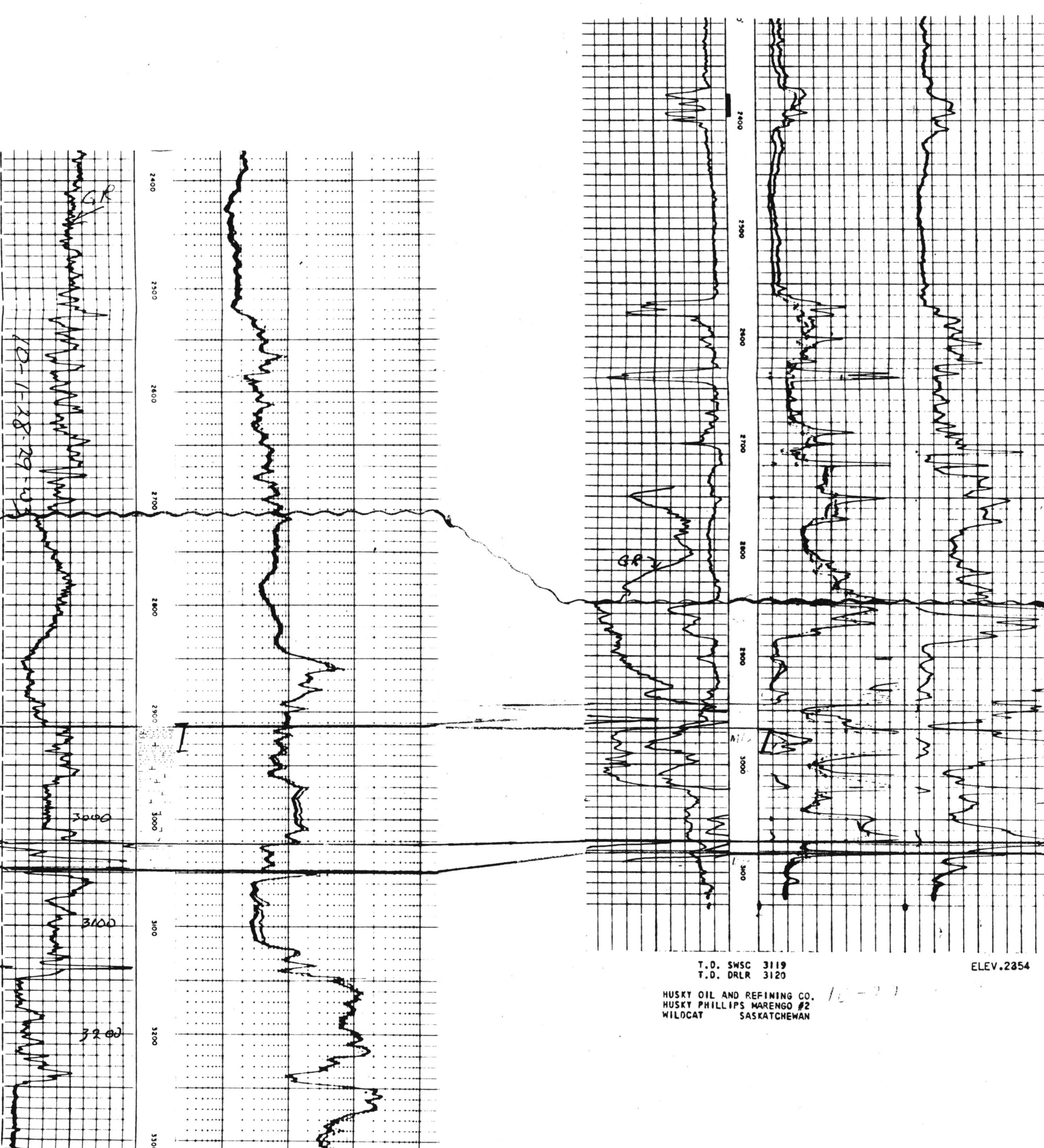
2-20-32-27 W3  
KB. 2390

7-12-34-28 W3  
KB. 2404

7-28-35-28 W3  
KB. 799.3m

13-8-26-28 W3  
KB. 731.4m

North



Core 2755-2785  
2787-2868

M. Bakken oil well

DST 2910-2936  
Rec. 70' mud & 30' muddy brackish water

DST 2968-2988  
Rec. Gas 1 Mmft/d

DST 2849-2875  
Rec. 30' oil cut mud 2070' s.w.

DST 2820-2852  
Rec. 1985' oil 30' gassy muddy oil

DST 2768-2818  
Rec. 2000' s.w.

OPEN FILE  
DOSSIER PUBLIC  
1123  
GEOLOGICAL SURVEY  
COMMISSION GEOLOGIQUE  
OTTAWA