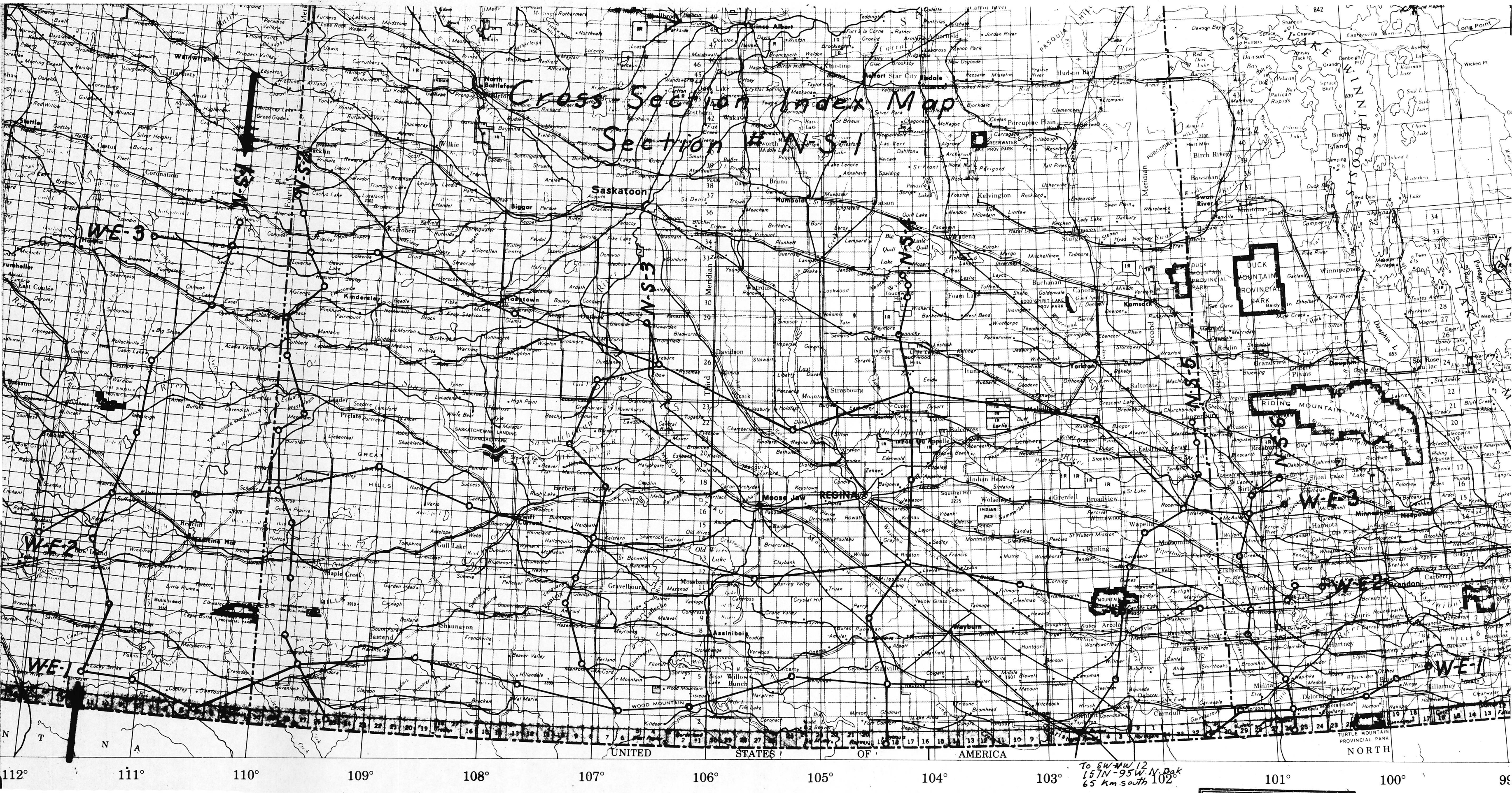
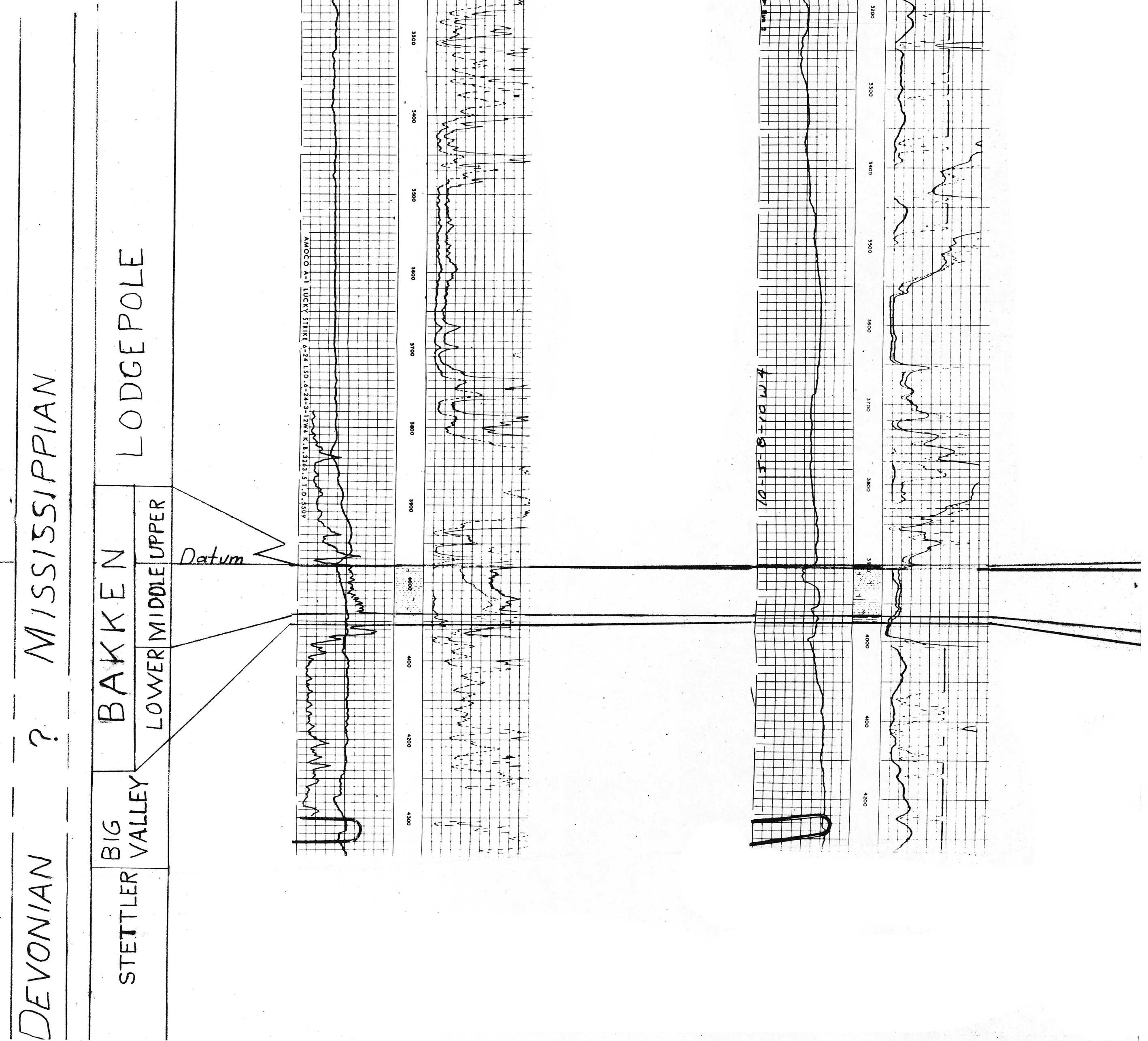


South



THE ASSOCIATION OF
PROFESSIONAL ENGINEERS,
GEOLOGISTS AND GEOPHYSICISTS
OF ALBERTA
PERMIT NUMBER
P 3820
M.C. HORNIFORD EXPLORATION
CONSULTANTS LTD.



12-14-12-12 W4
KB. 2488'

7-14-15-11 W4
KB. 2460'

6-30-19-9 W4
KB. 2672'

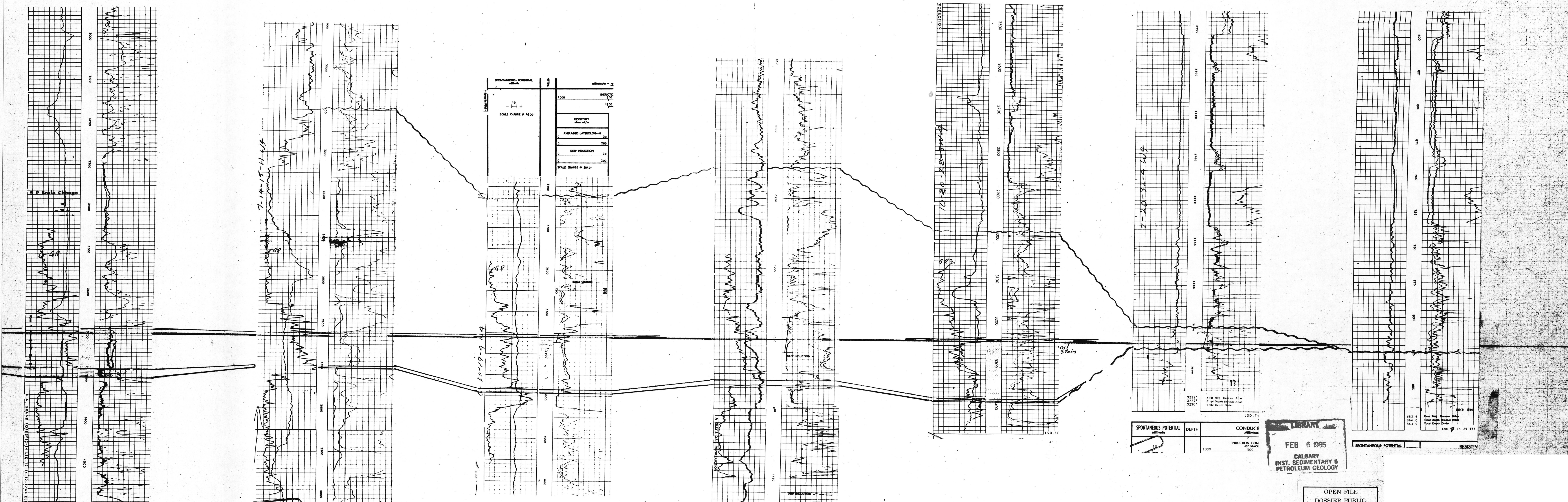
2-22-24-9 W4
KB. 738.8 m.

10-20-28-5 W4
KB. 2662'

7-20-32-4 W4
KB. 2537'

7-14-34-4 W4
KB. 672.2 m.

North



DST 3750-3770
Rec. 727' saltwater

DST 1035-1060
Rec. 16m. oilflecked mud.

DST 3098-3145
Rec. 635' brackish water.

This map has been reprinted from a scanned version of the original map. Reproduction par numérisation d'une carte sur papier.

SPONTANEOUS POTENTIAL DEPTH CONDUCTIVITY INDUCTION LOG

LIBRARY
FEB 6 1985
CALGARY
INST. SEDIMENTARY & PETROLEUM GEOLOGY

OPEN FILE
DOSSIER PUBLIC
1123
GEOLOGICAL SURVEY
COMMISSION GÉOLOGIQUE
OTTAWA