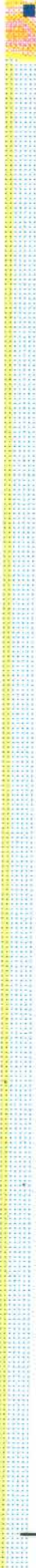
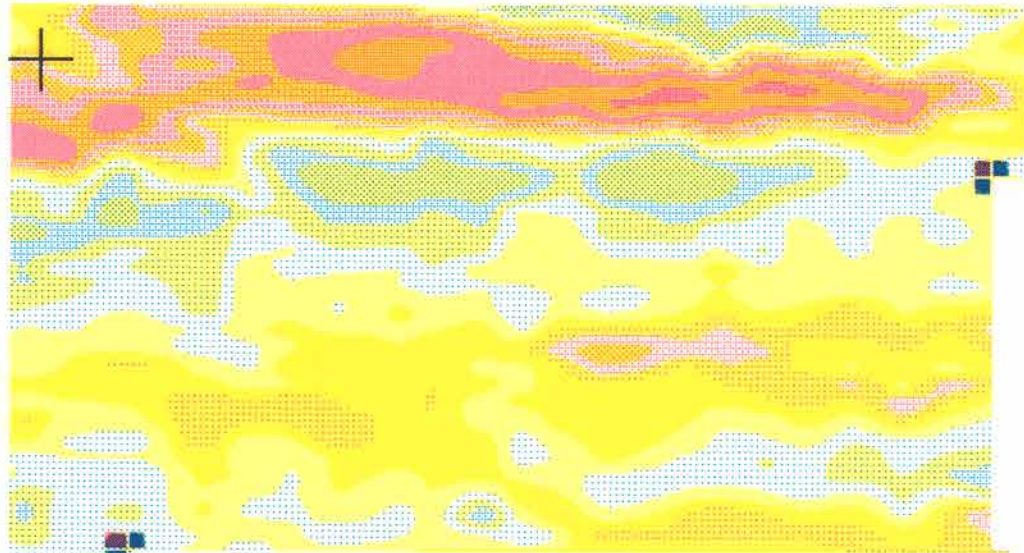


45 00 00
62 00 00

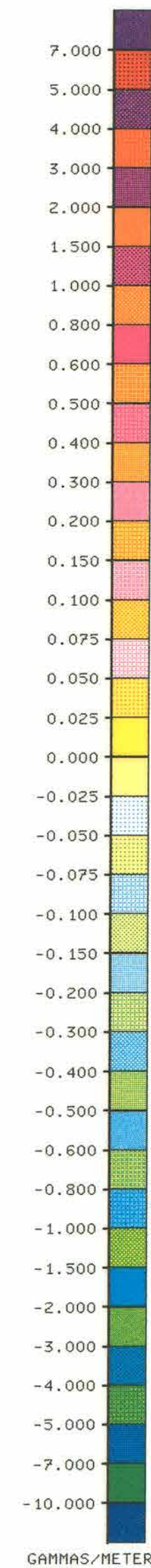


44 49 30
62 00 00

This document was produced
by scanning the original publication.

Ce document est le produit d'une
numérisation par balayage
de la publication originale.

45 00 00
61 45 00



GUYSBOROUGH N.S. VERTICAL GRADIENT SCALE 1:50000

COMPILED BY:
GEOPHYSICAL DATA PROCESSING SECTION
REGIONAL GEOPHYSICS SUBDIVISION
RESOURCE GEOPHYSICS AND GEOCHEMISTRY DIVISION
GEOLOGICAL SURVEY OF CANADA
DEPARTMENT OF ENERGY, MINES AND RESOURCES



44 49 30
61 45 00