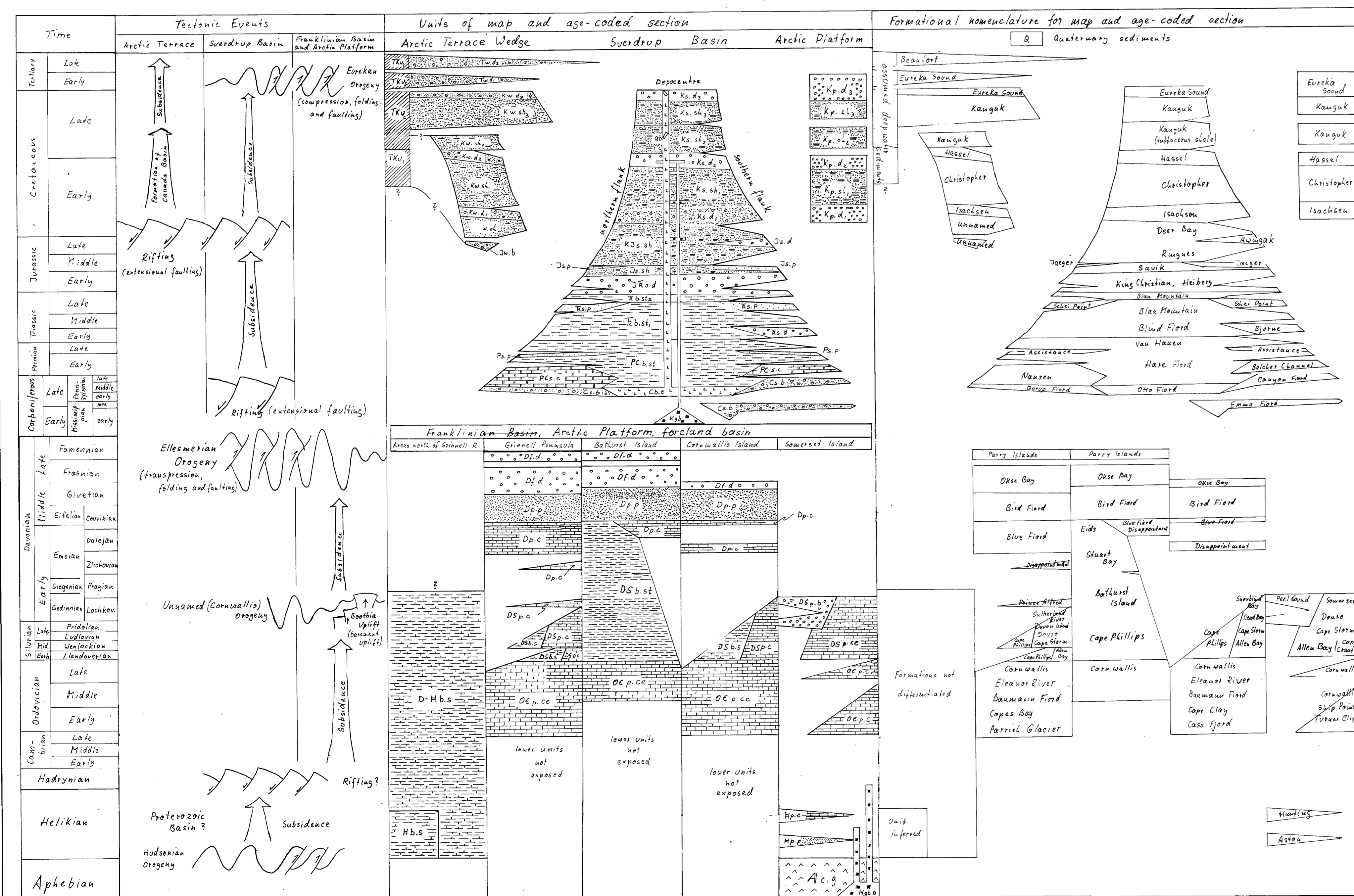
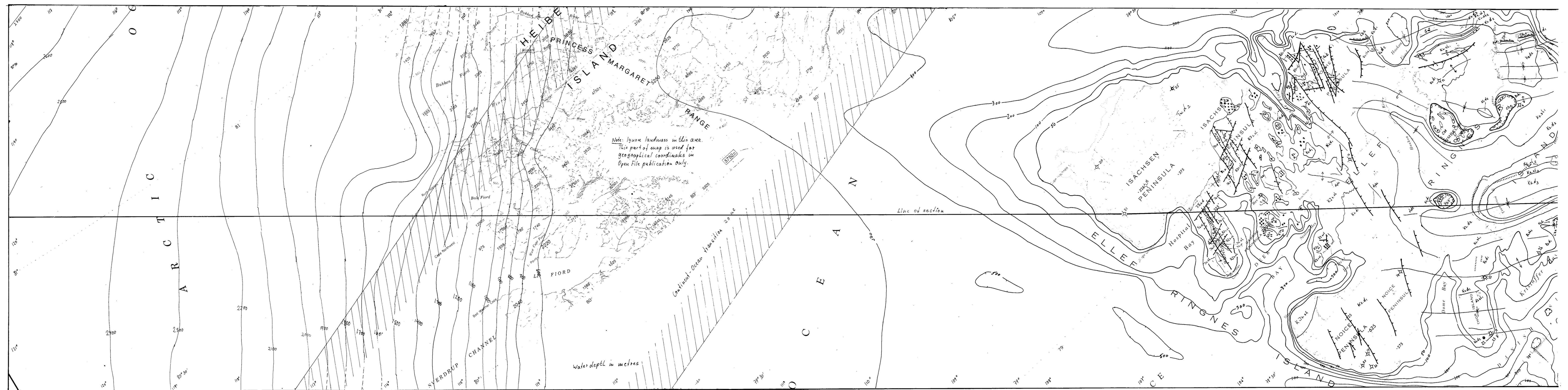
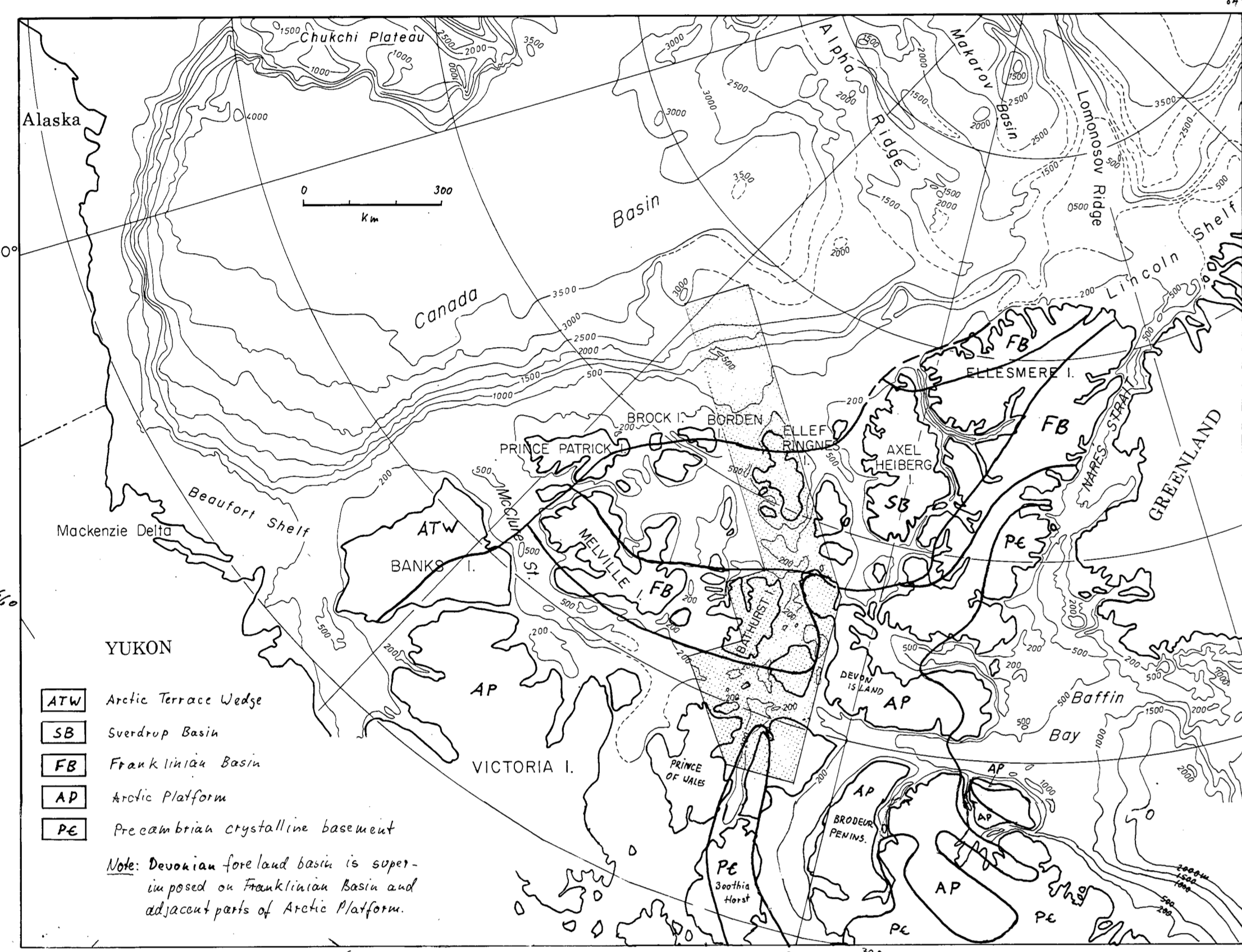
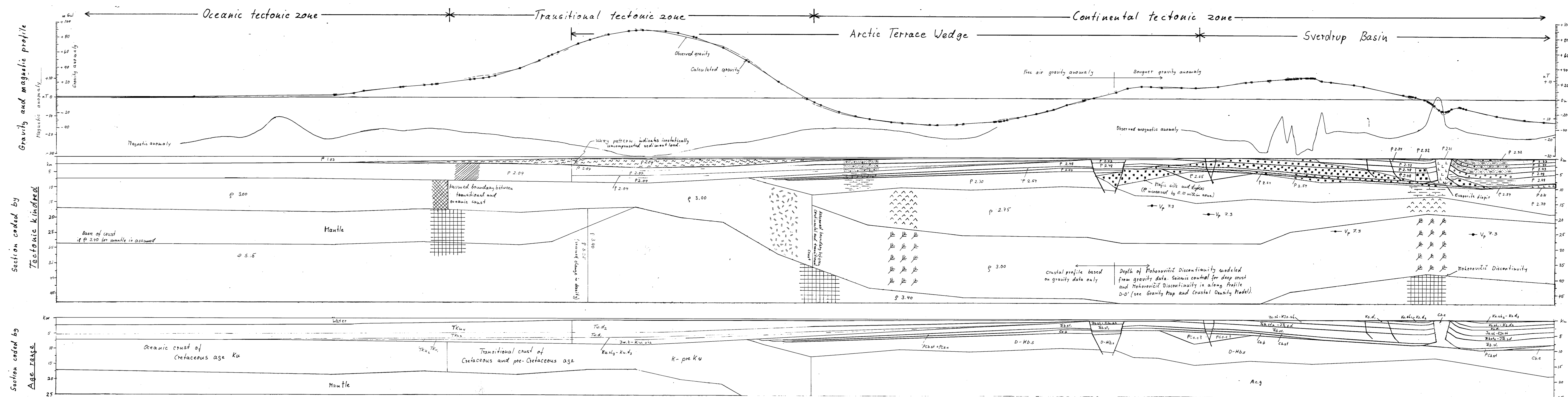


North American Continent-Ocean Transects Program Corridor G Somerset Island to Canada Basin

Coordinators: J.F. Sweeney, Earth Physics Branch, Pacific Geoscience Centre, Sidney, B.C.
 Contributors: H.R. Balkwill, Petra-Canada Exploration Inc., Calgary, Alta.
 R. Franklin, Earth Physics Branch, Arctic Geoscience Centre, Sidney, B.C.
 Ulrich Hoeg, Geological Survey of Canada, Institute of Sedimentary and Petroleum Geology, Calgary, Alta.
 P. McGeeth, Geological Survey of Canada, Ottawa, Ont.
 E. Sany, Geological Survey of Canada, Institute of Sedimentary and Petroleum Geology, Calgary, Alta.
 L.W. Sobczak, Earth Physics Branch, Ottawa, Ont.
 R.J. Uchtmiller, Earth Physics Branch, Ottawa, Ont.
 Panarctic Oils Ltd., Calgary, Alta. (unpublished seismic and bathymetric data)
 Compiler: Ulrich Hoeg, Geological Survey of Canada, Institute of Sedimentary and Petroleum Geology, Calgary, Alta.



Symbols for tectonic-coded section	
Continental tectonic zone	Arctic Platform, Franklin Basin, Sverdrup Basin, Arctic Terrace Wedge
Transitional tectonic zone	Healy Channel, Princess Margaret Range, Sverdrup Channel
Oceanic tectonic zone	Arctic Basin, Sverdrup Basin

