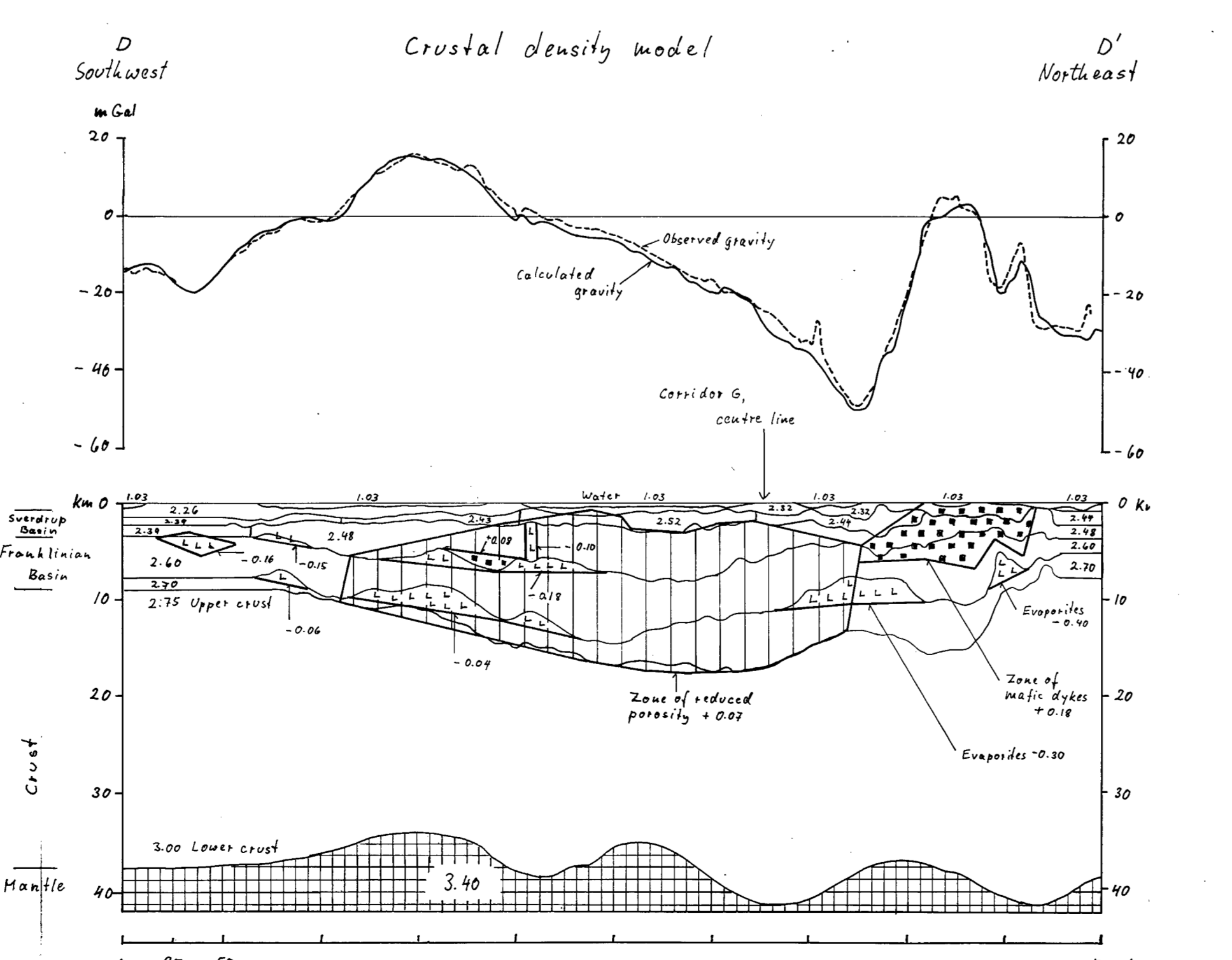
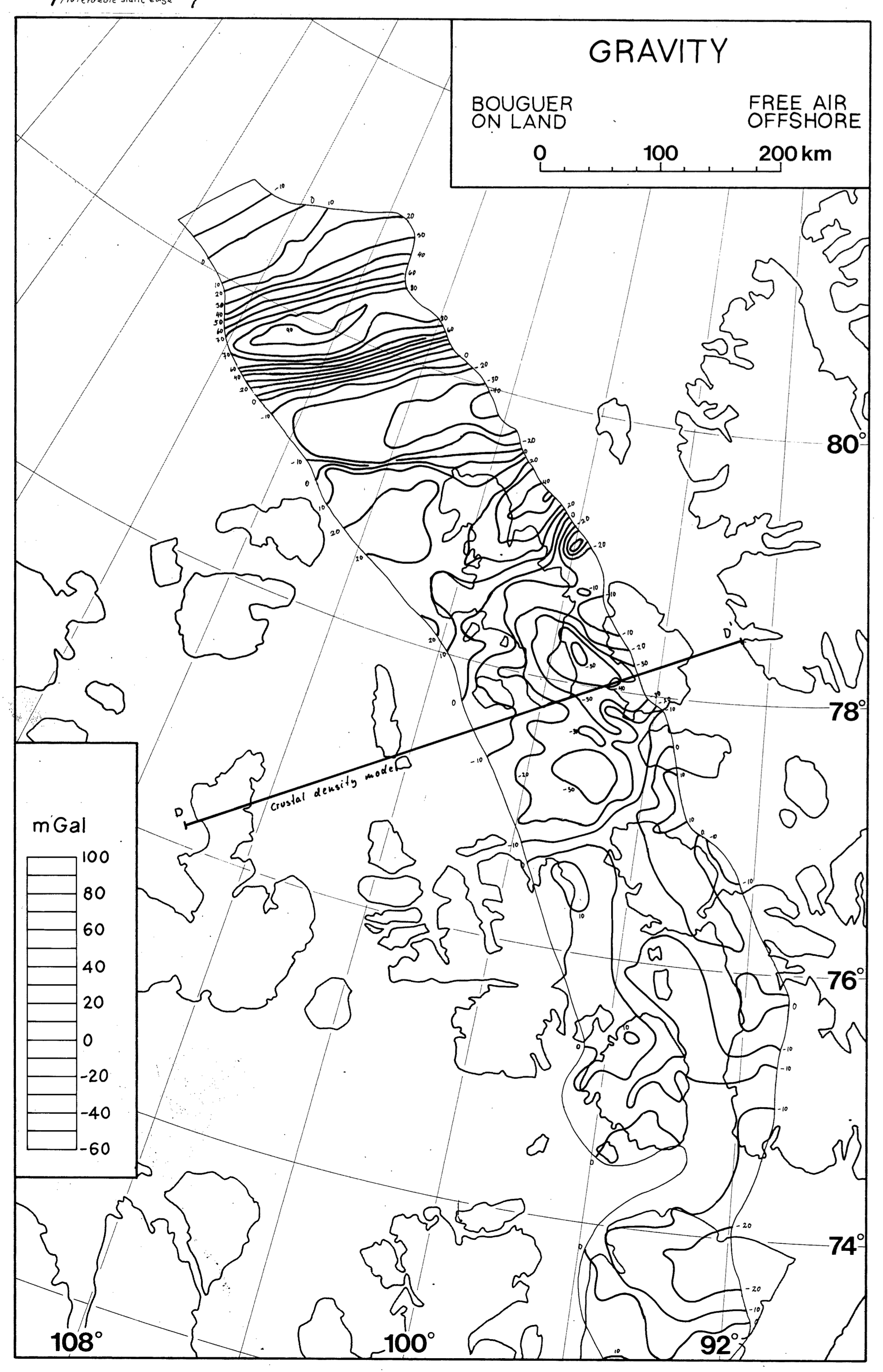


**Map Symbols**

- Anticline
- Syncline
- Overturned syncline
- Wells
- abandoned
- gas
- oil
- Extensional faults (axis in direction of)
- Cenozoic motion
- Cenozoic and Palaeozoic motion
- Palaeozoic motion
- Strike-slip faults
- Palaeozoic motion
- Convergent faults (axis in direction of)
- Cenozoic and Palaeozoic motion
- Palaeozoic motion

WELL IDENTIFICATION  
(1:500 000 Corridor Map)

NO.	WELL IDENTIFICATION	DEPTH (m)	DATE
1.	Lobitos et al. Cornwallis Resolute Bay L-41	1476	1965
2.	Dominion Explorers Casco et al. Bathurst Can. R. J-24	3048	1964
3.	Panarctic Hoodoo Dome H-37	1574	1970
4.	Panarctic King Christian D-18A	847	1971
5.	Sun K. R. Panarctic Allison R. N-12	3585	1971
6.	Panarctic Dominion Cornwallis Central Dome K-40	3064	1971
7.	Sun K. R. Panarctic Young Inlet D-21	1846	1971
8.	Panarctic Temneco et al. King Christian N-06	3359	1971
9.	Sun Panarctic Russell H-02	1839	1972
10.	Panarctic Temneco et al. Kristoffer Bay B-06	3925	1972
11.	Panarctic Gulf Humbells E-49	3408	1972
12.	Panarctic Gulf Helicopter J-12	3814	1972
13.	Panarctic Temneco et al. Hoodoo L-41	4279	1972
14.	Panarctic Dome Temneco et al. Dome Bay D-36	2454	1972
15.	Panarctic Nolle G-44	1765	1972
16.	Sun Gulf Global Lockens Island P-46	1831	1973
17.	Panarctic Dome Temneco et al. Louisa O-25	2281	1973
18.	Panarctic Temneco et al. Polius G-40	1429	1973
19.	Dome Arctic Ventures Sutherland O-23	2629	1973
20.	Panarctic Temneco et al. Cape Isachsen J-37	4103	1973
21.	Panarctic Temneco et al. W. Polius E-59	914	1973
22.	Panarctic Temneco et al. Thor P-38	1829	1973
23.	Panarctic Temneco et al. Thor W-28	1256	1973
24.	Dome Arctic Ventures Sutherland O-23	4457	1974
25.	Panarctic Dome Temneco et al. Sirius K-28	2871	1974
26.	Sun GA KBC CON Panarctic Elva M-40	1874	1974
27.	Panarctic Mooklin Point D-23	2802	1975
28.	Panarctic Temneco Sun Dome Jackson Bay C-16	1202	1976
29.	Panarctic Temneco Sun Dome Jackson Bay G-16A	1600	1976
30.	HB Norcen Phillips Cape Allison L-50	3004	1978
31.	Panarctic et al. Stokes Range J-11	3340	1978
32.	Panarctic et al. Nolle D-41	2247	1979
33.	Dome Panarctic et al. Hoodoo E-05	2476	1979
34.	Panarctic A.I.E.G. Dome PPC Char G-07	2179	1980
35.	Panarctic A.I.E.G. Dome PPC Balarna D-58	1874	1980
36.	Dome et al. Wallis A-73	2827	1980
37.	Panarctic Dome et al. Hoodoo N-52	1650	1981



This map has been prepared from a limited review of the original maps. Reproduction for non-commercial use is permitted.

OPEN FILE  
DOSSIER PUBLIC  
**1093**  
GEOLOGICAL SURVEY  
CONSERVATION GÉOLOGIQUE  
OTTAWA

