

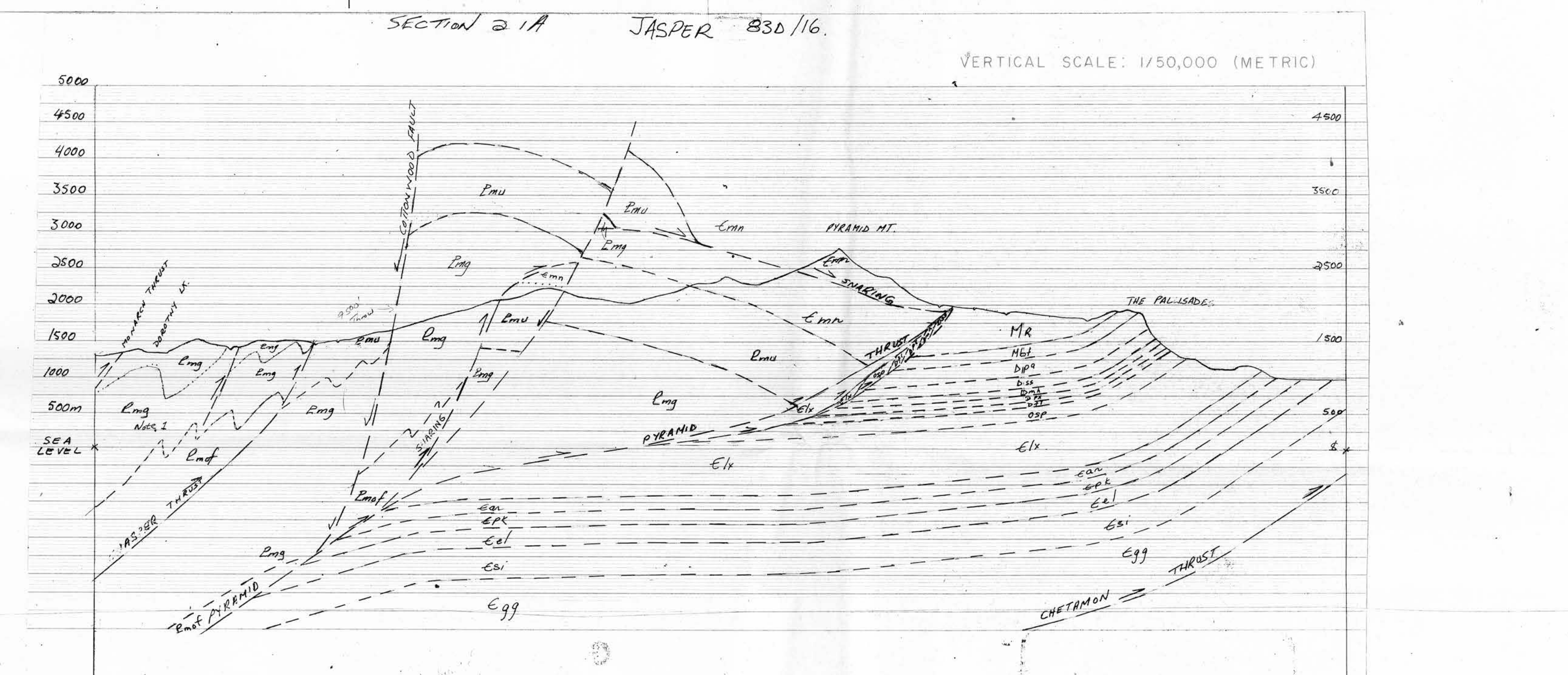
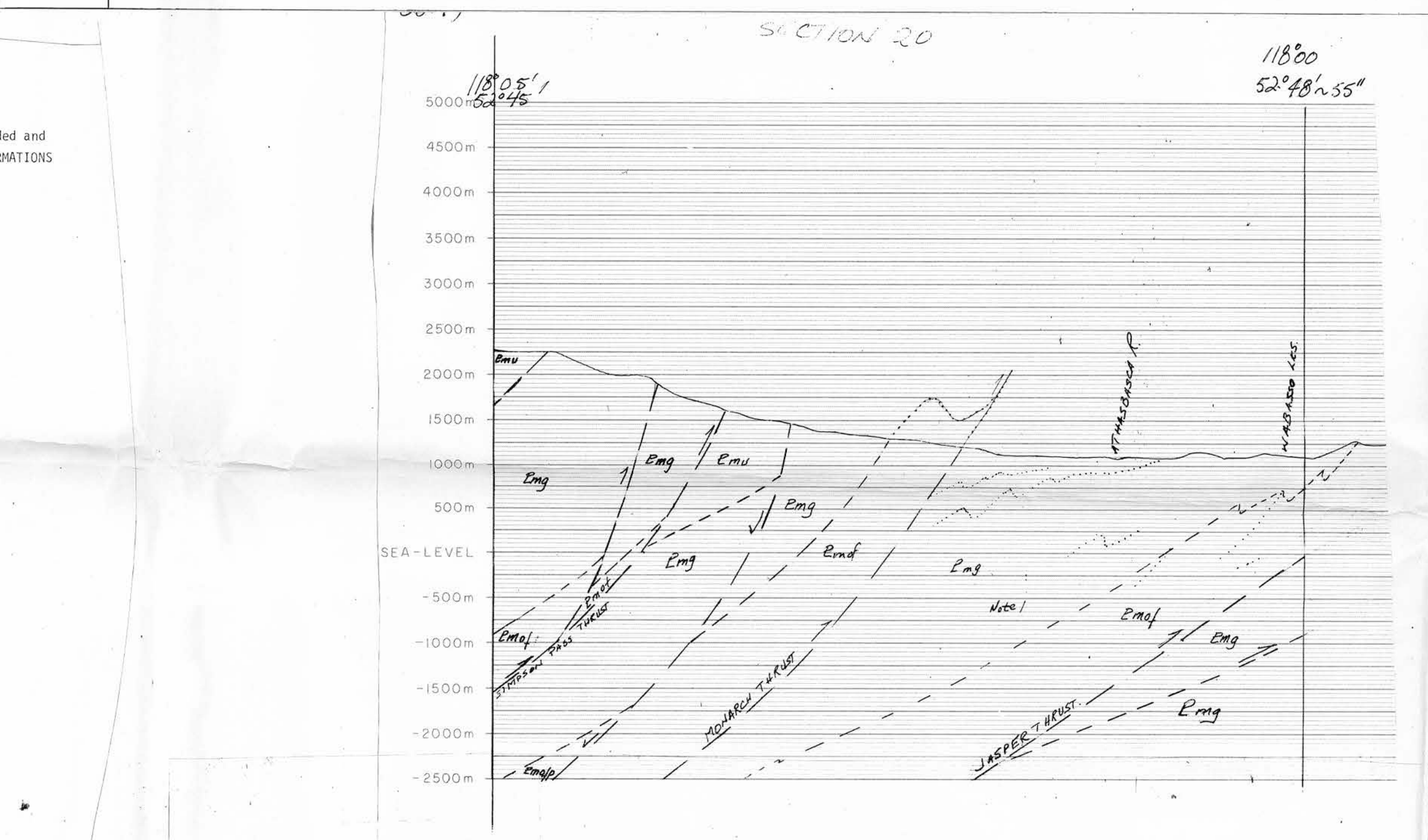
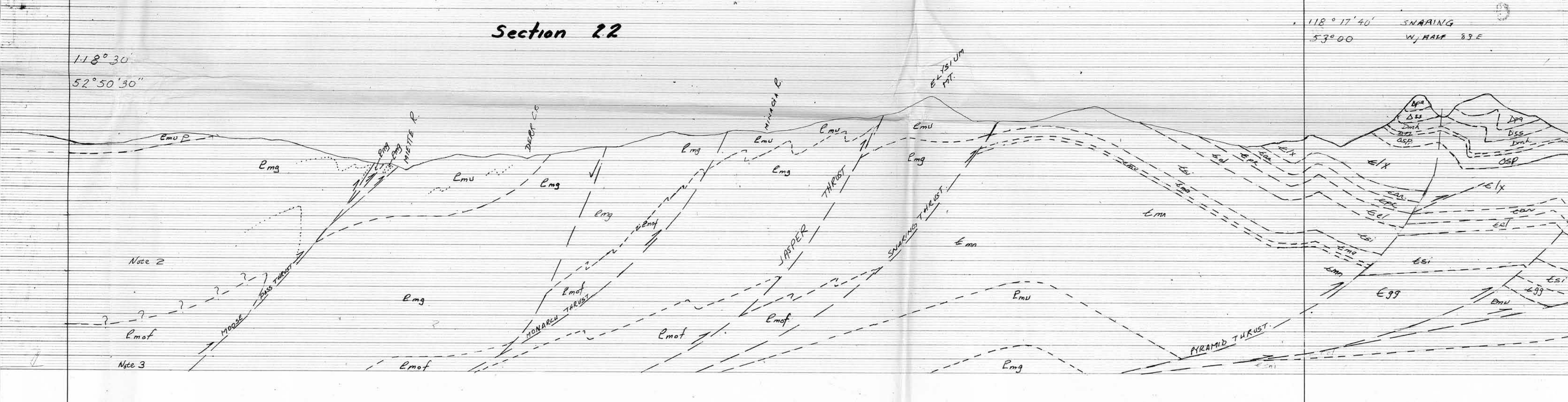
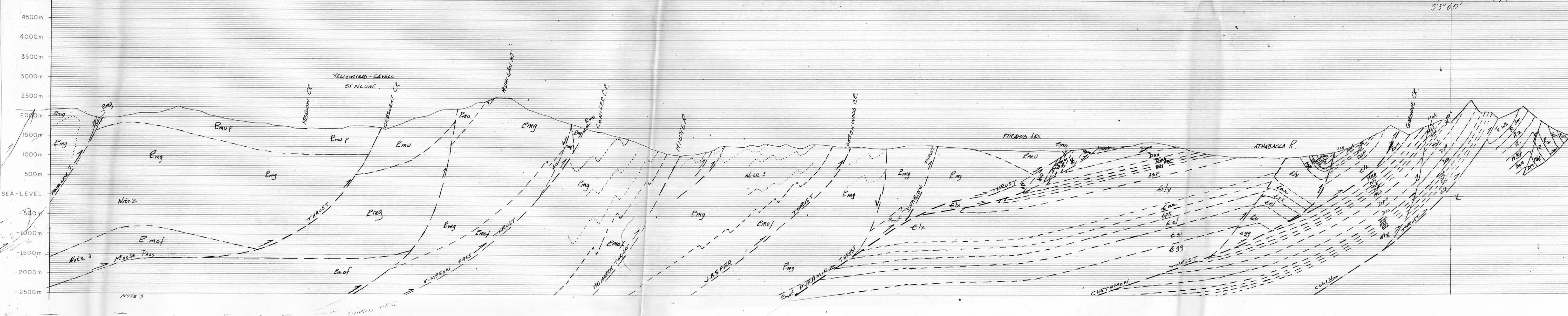
830/9 830/16
118°20'W
53°40'N

JASPER 830/16
(1:50,000)

SECTION 21

VERTICAL SCALE: 1/50,000 (METRIC)

118° 20' 83 E/P
53° 40'



LEGEND JASPER 830/16

QUATERNARY
PLEISTOCENE AND RECENT
[Symbol] Rock glacier
[Symbol] Ice glacier
[Symbol] Till, alluvium, colluvium

TRIASSIC
SPRAY RIVER GROUP (N, S and N, W)
[Symbol] QUATERNARY FORMATION: Siltstone and sandstone, dolomitic, light grey; mudstone and siltstone, red, green and brown; limestone and dolomite breccia.
[Symbol] SHELPHUR MOUNTAIN FORMATION: Siltstone and sandstone, dark grey and brown, thin bedded; mudstone silt; shale; siltstone dolomitic.

PERMIAN AND PENNSYLVANIAN
[Symbol] ROCKY MOUNTAIN GROUP: Sandstone quartzose, light grey, cherty; massive chert, sandstone dolomitic, dolomite silt.

MISSISSIPPIAN
[Symbol] RUNDLE GROUP (Nw, Nw, Nw, Nw)

[Symbol] MOUNT HEAD FORMATION: Dolomite, dense, grey to brown, and argillaceous dolomite; limestone, micritic to medium grained, grey; dolomite, cherty and silt.
[Symbol] TURNER VALLEY FORMATION: Dolomite, crystalline, medium to coarse grained, light grey; limestone, micritic, light to dark grey, in part fenestral, cherty; other breccia.
[Symbol] SHAWA FORMATION: Limestone, micritic, light to dark grey, in part fenestral, cherty; other breccia.
[Symbol] PEYSID FORMATION: Limestone, crystalline, medium to coarse grained, light grey, thin bedded.
[Symbol] BARRY FORMATION: Limestone, micritic, dark grey, thin bedded; shale and calcareous shale, dark brownish grey, crystalline limestone, cherty; at base shale, black, fissile, cherty, and sandstone brown.

DEVONIAN
UPPER DEVONIAN
[Symbol] PALLISER FORMATION: Limestone, micritic, with dolomitic tracery and mottling, grey, dark bedded, massive.
[Symbol] SASSAMACH FORMATION: Sandstone and siltstone, fine grained, medium bedded; limestone, silt and argillaceous shale, silt, calcareous, dark grey.

[Symbol] RAINBOW GROUP (Dw, Dw, Dw, Df)
[Symbol] RUBY GROUP (undivided and upper and lower formations)
[Symbol] RUBY FORMATION: Shale, black, calcareous, pyritic, with calcareous nodules and thin beds of limestone, dark grey, argillaceous.
[Symbol] FLUPE FORMATION: Limestone, fine grained to micritic, cherty, dark grey to brown, in part dolomitic, with *Aspidopora* and *Stromatopora* and *Wolfeia* fossils; limestone, micritic, argillaceous, dark grey, thin bedded, with brachiopods.
Note: Dw, Dw, and Df represent strata deposited basinwards from the Cairn and Southport formations which represent reef fringed carbonate buildings.

CAMBRIAN AND ORDOVICIAN
[Symbol] SURVEY PEAK FORMATION: Shale, grey, calcareous, interbedded with limestone, micritic, after chert; basal part shale, calcareous, grey to olive, with minor limestone, flat pebble conglomerate and siltstone; western part greenish grey.

CAMBRIAN
UPPER CAMBRIAN
[Symbol] LYNA FORMATION: Dolomite and limestone, finely crystalline to micritic, grey, grading to siltstone, dolomite, laminated, thin bedded to massive; minor shale, greenish grey.

MIDDLE CAMBRIAN
[Symbol] HICKSON'S FORMATION: Shale, purple-red, green and grey, with thin interbeds of siltstone and sandstone, dolomitic, yellow with purple marks, red cracks, salt casts, and minor dolomite, with encrusting.
[Symbol] PEKA FORMATION: Limestone, micritic, grey, thin bedded, with partings and mottlings of finely crystalline dolomite; limestone pebble conglomerate; oolite; and subordinate shale.
[Symbol] ELLEN FORMATION: Limestone, micritic, dolomitic, mottled, grey, massive; replaced locally by secondary coarse crystalline dolomite.
[Symbol] SHAWA (INDIAN FORMATION): Alternating units of limestone and calcareous shale; limestones micritic, purple, grey and resistant; shales calcareous, grey, recessive; with siltstone and siltstone, red and green at the base.

LOWER CAMBRIAN AND/OR HORDVIAN
[Symbol] OGG GROUP
[Symbol] MUGBY FORMATION: Sandstone, quartzose, cross-bedded, alternating with thinner beds of siltstone and silt shale.
[Symbol] MUGBY FORMATION: Limestone, micritic, and dolomite, finely crystalline, grey with archaean fossils, massive, some shale interbed.
[Symbol] MUGBY FORMATION: Sandstone, quartzose, cross-bedded, massive; pebble conglomerate and dolomitic sandstone at base.

UPPER PROTODERIVALS (ANDERSON)
KINDERSLEY SUPERGROUP
MLETTE GROUP (Dw, Dw, Dw, Dw, Dw, Dw)
UPPER MLETTE GROUP
[Symbol] Carbonaceous: Dolomite, finely crystalline, light brown to grey, locally with stromatolite and stromatolite, massive, grades into *Dw* occurs at more than one stratigraphic level.
[Symbol] Upper Unit: Shale, silt, dark grey to black, variable amounts of poorly sandstone; local paraconglomerate with large dolomite clasts at base.
[Symbol] Lower Unit: Shale and silt, silt, brown to dark grey, finely laminated; near sandstone and siltstone interbed.
MIDDLE MLETTE GROUP
[Symbol] Grit Unit: Ridge forming grit and sandstone, alternating with shale and siltstone, recessive, dark grey, sandstone and grit generally graded and poorly sorted.

LOWER MLETTE GROUP
[Symbol] OLD FORT POINT FORMATION: Shale with siltstone, grey, green, purple, with variable amounts of limestone, micritic, pink to light green limestone interformational breccia; near calcareous sandstone.

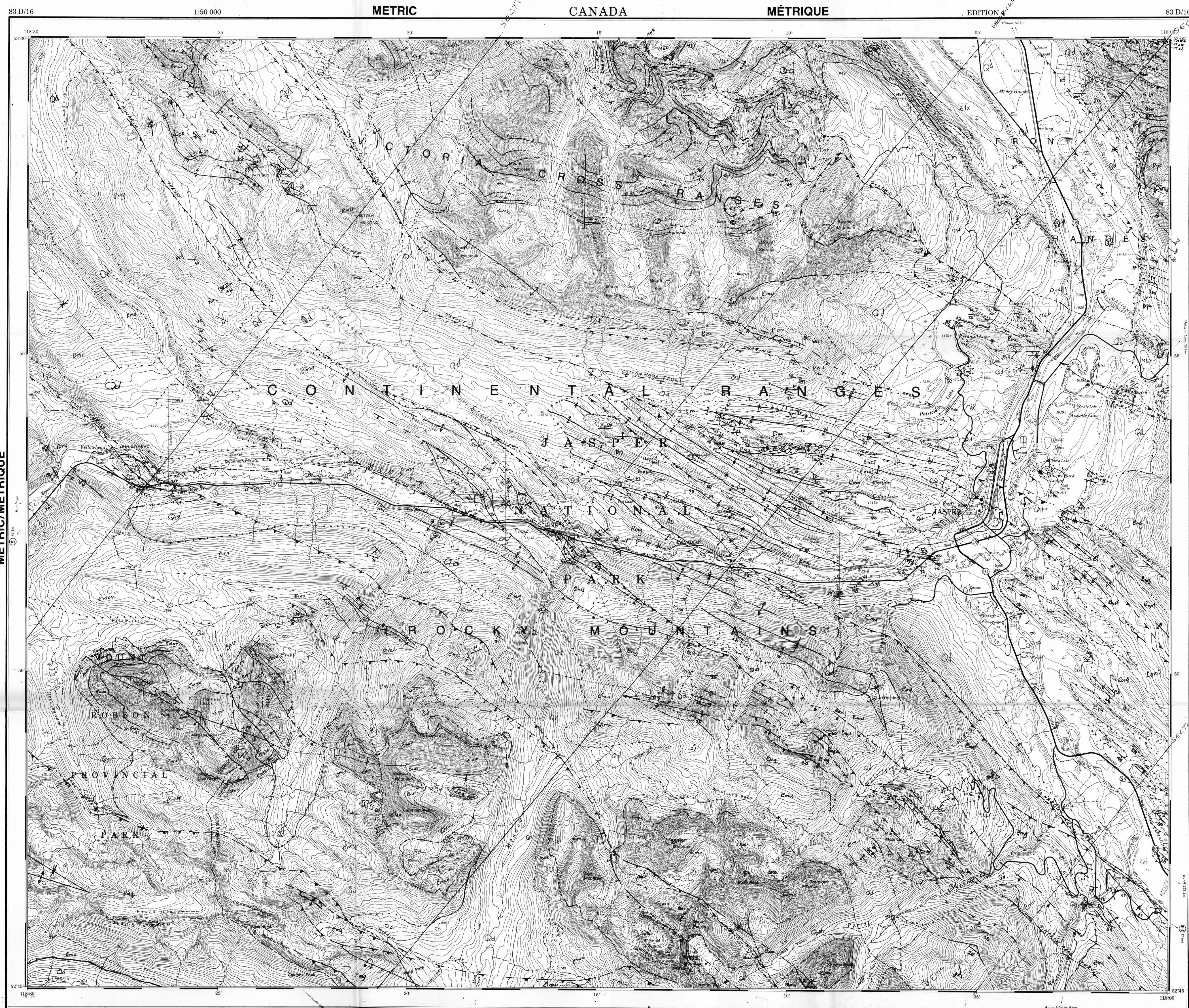
SYMBOLS

LANDSLIDE (Q) BOUNDARY
QUATERNARY BOUNDARY (Q)
GEOLOGIC BOUNDARY (dotted, approximate, assumed, assumed projected under younger deposits)
BEDDING TOPS KNOWN (dotted, vertical, horizontal, overthrown)
BEDDING TOPS NOT KNOWN (dotted, vertical)
CLEAVAGE
THRUST FAULTS (tooth on upthrown side defined, approximate assumed, assumed projected under younger deposits)
FAULTS, generic type unknown (dotted, approximate, assumed)
ANTICLINE, trace of axial surface (upright, overturned)
SYNCLINE, trace of axial surface (upright, overturned)
POSSIBLE LOCALITY (dotted, vertical, horizontal, overthrown)
STRATIGRAPHIC SECTION, locus of measurement
boundaries refer to internal cataloging system
AC - studied by J.D. Aitken
M3 - studied by E.W. Moore (sp)

SCHEMATIC STRATIGRAPHIC RELATIONSHIPS
[Diagram showing stratigraphic relationships between various geological units]

UNCONFORMITY
[Diagram showing unconformity relationships between various geological units]

UNCONFORMITY



This document was produced by scanning the original publication.

Ce document est le produit d'une numérisation par balayage de la publication originale.

GLOSSARY GLOSSAIRE
[Table with 2 columns: English and French terms and their meanings]

ABBREVIATIONS ABBRÉVIATIONS
[Table with 2 columns: English and French abbreviations and their meanings]

Scale 1:50,000 Echelle
[Scale bar and conversion table for metric and imperial units]

OPEN FILE
DOSSIER FICHIER
1038
GEOLOGICAL SURVEY