

Note: This legend is common for Regional Geochemical Reconnaissance Map 64-1983, Open File 999

PROTEROZOIC (APHEBIAN)

- 31(AH1U) GRANITIC INTRUSIVE ROCKS, POST-SICKLE (HUDSONIAN) (AH1A to AH1F)
31a - leucotonalite + magnetite; 31b - megacrystic granite; 31c - granite, granodiorite + hornblende; 31d - leucogranite, granodiorite; 31e - monzonite, syenite; 31f - pegmatite
- 30 GRANITIC INTRUSIVE ROCKS, POST-SICKLE and remobilized PRE-SICKLE
30 - granite, granodiorite (AH1G)
- 29 INTERMEDIATE INTRUSIVE ROCKS, POST-SICKLE and remobilized PRE-SICKLE
29a - tonalite, granodiorite, quartz diorite (AH1I); 29b - pyroxene tonalite (AH1P)
- 28 MAFIC INTRUSIVE ROCKS, POST-SICKLE
28 - gabbro, minor ultramafic rock (AH1R)
- 27 BLACK TROUT INTRUSIVE SUITE
27 - quartz diorite, diorite (AT1Q)

SICKLE GROUP		SICKLE METAMORPHIC SUITE	SOUTHERN INDIAN GNEISS
26	ARKOSIC METASEDIMENTARY ROCKS, DERIVED GNEISS 26a - conglomerate (ASAC) 26b - arkosic sandstone (ASAS)	26c - sandstone-derived gneiss, migmatite (ASAN) <i>conformable ? on Burntwood River M.S.</i>	
PRE-SICKLE INTRUSIVE ROCKS			
25	25a - gabbro, norite, ultramafic rock (AP1R) 25b - tonalite, granodiorite, diorite (AP1T) 25c - granite (AP1G)		
WASEKWAN or SICKLE GROUP		GNEISSIC ROCKS OF PROBABLE WASEKWAN AGE	
24	AMPHIBOLITE, CALC-SILICATE ROCK, METASEDIMENTARY ROCKS 24a - conglomerate, greywacke (AG1C); 24b - felsic gneiss (AG1F) <i>unconformable?</i>		
WASEKWAN GROUP		BURNTWOOD RIVER METAMORPHIC SUITE	
23	METASEDIMENTARY ROCKS 23a - greywacke, conglomerate, mafic mudstone (AW1W)	23b - mafic gneiss, volcanic rock, greywacke, quartzite, marble (AB1M) <i>conformable</i>	23c - greyswacke-derived gneiss, migmatite (ABS1W) <i>conformable</i>
22(AW1V)	FELSIC, INTERMEDIATE VOLCANICS 22a - dacite, rhyolite (AW1D)	22b - amphibolite, tuff (AT1A) <i>conformable</i>	22c - greyswacke-derived gneiss and migmatite (AIS1W)
21(AW1M)	MAFIC, INTERMEDIATE VOLCANICS 21a - basalt, andesite (AW1A) 21b - basalt (AW1B)		

* A four letter mnemonic name recorded as rock type as part of field observations
Geological boundary.....
Fault.....
No analytical result.....*

Provisional Compilation Map: Geology of the Granville Lake Area NTS 64C, by H.V. Zwanig, Manitoba Dept. of Energy and Mines

Geological Survey of Canada
Resource Geophysics and Geochemistry Division

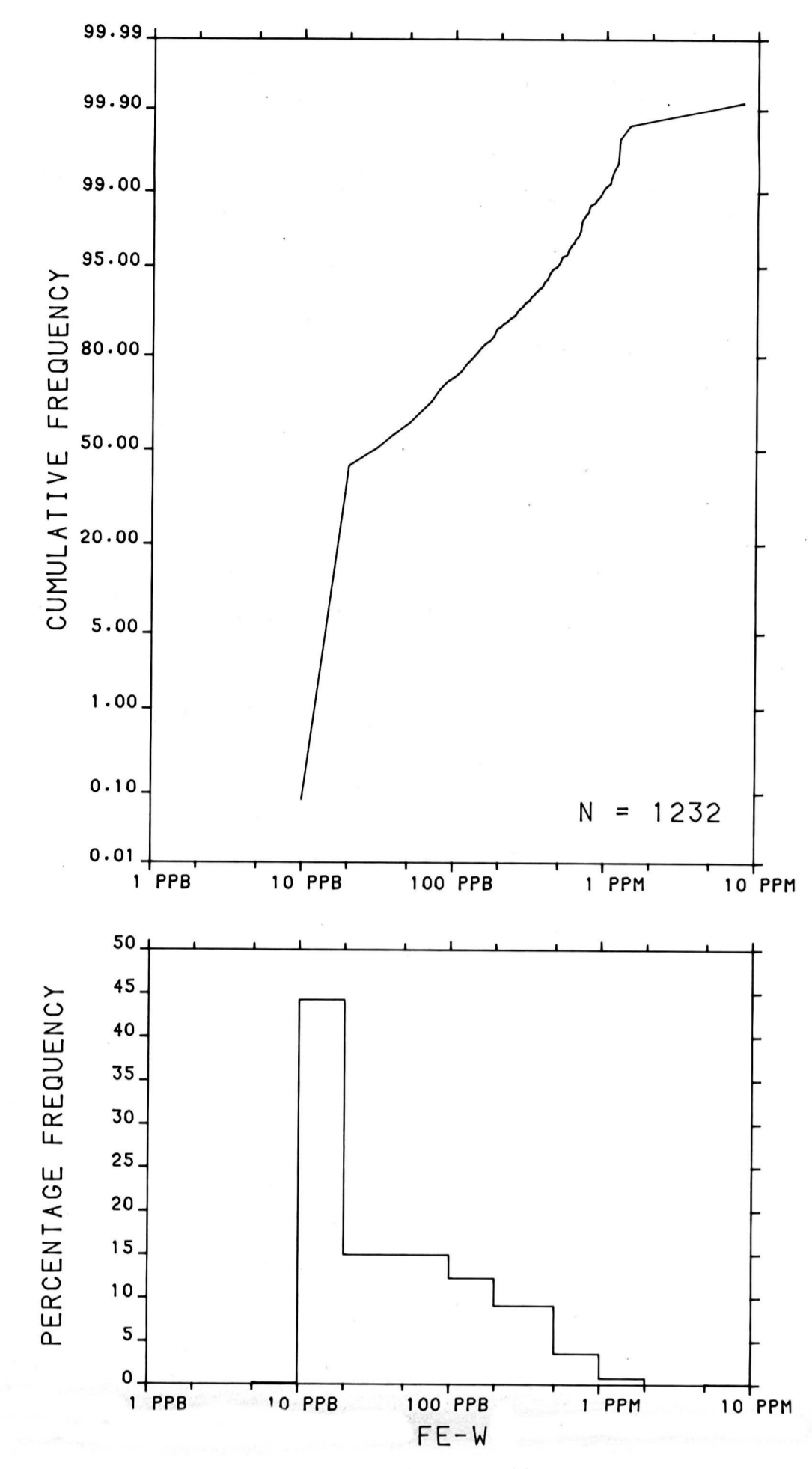
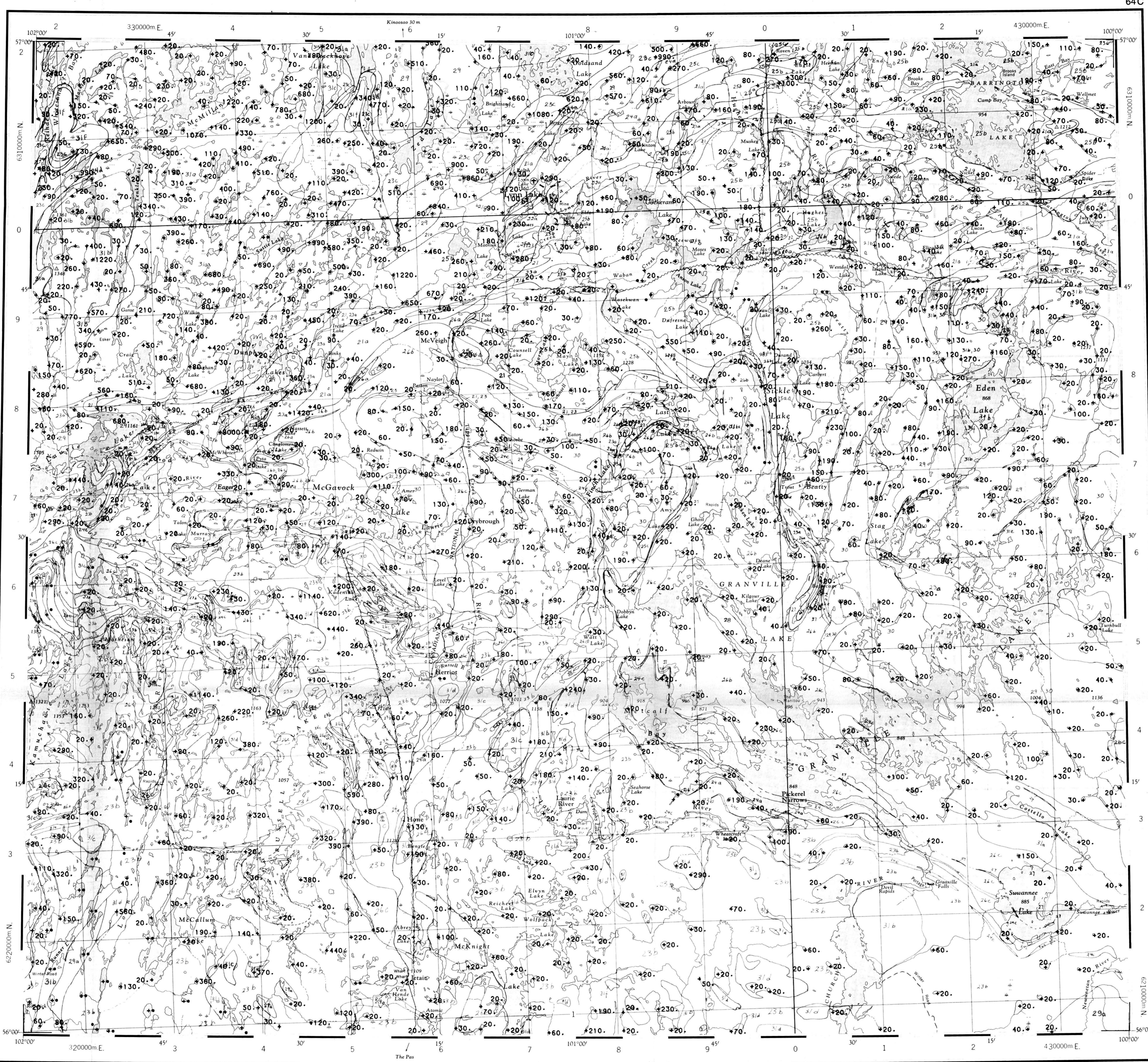
Manitoba Department of Energy and Mines
Mineral Resources Division

CONTRACTORS

Sample collection by Wollax Exploration
Sample preparation by Golder Associates

Sediment chemical analysis by Chemex Labs Ltd.
Water chemical analyses by Acme Analytical Laboratories Ltd.
Other water chemical analyses by Manitoba Technical Laboratory Services

This map forms one of a series of maps released by the Geological Survey of Canada, Open File 999. The Open File consists of maps of various geochemical variables: 16 for lake sediment, 8 for lake water and 1 sample site location

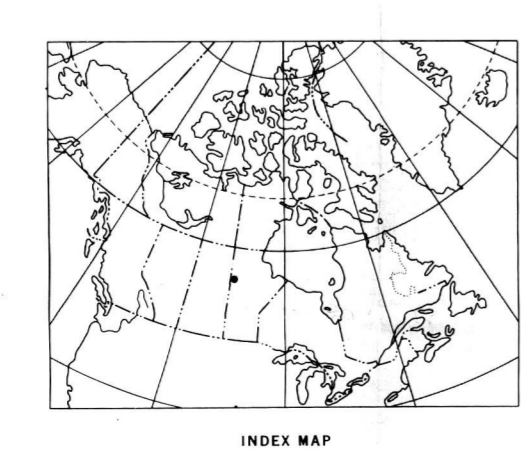


Copies of map material and listings of field observations and analytical data, from which the material was prepared, may be available at users expense by application to:

K.G. Campbell Corporation
880 Wellington St.
Bay 238
Ottawa, Ontario
K1R 6K7

The data are also available in digital form. For further information please contact:

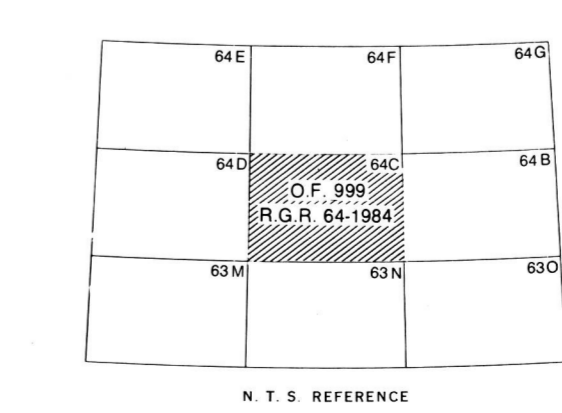
The Director
Computer Science Center
Department of Energy, Mines and Resources
Ottawa, Ontario
K1A 0E4



Elevation in feet above mean sea level
Mean magnetic declination 1984, 11°44.7' East decreasing 16.7' annually. Readings vary from 10°57.4' in the NE corner to 13°05.0' in the SW corner of the map area

IRON in water (ppm)
GSC OPEN FILE 999
REGIONAL GEOCHEMICAL RECONNAISSANCE MAP 64-1983
CANADA/MANITOBA INTERIM MINERAL AGREEMENT
LAKE SEDIMENT AND WATER GEOCHEMICAL SURVEY
LYNN LAKE AREA, MANITOBA
Scale 1:250 000
Kilometres 6 0 6 12 18 Kilometres
Universal Transverse Mercator Projection
© Crown Copyrights reserved

Base-map from map published at the same scale by the Surveys and Mapping Branch in 1963



This map has been reprinted from a scanned version of the original map. Reproduction par numérisation d'une carte sur papier.