

COBALT (ppm)
GSC OPEN FILE 999
LYNN LAKE AREA, MANITOBA
LEGEND

Note: This legend is common for Regional Geochemical Reconnaissance Map 64-1983, Open File 999

PROTEROZOIC (APHEBIAN)

- 31(AHIV) GRANITIC INTRUSIVE ROCKS, POST-SICKLE (HUDSONIAN) (AHIA to AHIF)
31a - leucotonalite + magnetite; 31b - megacrystic granite; 31c - granite, granodiorite ± hornblende; 31d - leucogranite, granodiorite; 31e - monzonite, syenite; 31f - pegmatite
- 30 GRANITIC INTRUSIVE ROCKS, POST-SICKLE and remobilized PRE-SICKLE
30 - granite, granodiorite (AHIG)
- 29 INTERMEDIATE INTRUSIVE ROCKS, POST-SICKLE and remobilized PRE-SICKLE
29 - tonalite, granodiorite, quartz diorite (AHIT), 29a - pyroxene tonalite (AHIP)
- 28 MAFIC INTRUSIVE ROCKS, POST-SICKLE
28 - gabbro, minor ultramafic rock (AHIR)
- 27 BLACK TROUT INTRUSIVE SUITE
27 - quartz diorite, diorite (ATIQ)

- | | | |
|----|----------------------------------------------------------------------------------------------------------------------------------------------------|------------------------|
| 26 | ARKOSIC METASEDIMENTARY ROCKS, DERIVED GNEISS
26a - conglomerate (ASAC)
26b - arkosic sandstone (ASAS) | SOUTHERN INDIAN GNEISS |
| | 26c - sandstone-derived gneiss, migmatite (ASAN)
<i>unconformable</i> / <i>conformable?</i>
<i>on Burntwood River M.S.</i> | |
| 25 | PRE-SICKLE INTRUSIVE ROCKS
25a - gabbro, norite, ultramafic rock (APIR)
25b - tonalite, granodiorite, diorite (APIT)
25c - granite (APIG) | |

- | | | |
|---------|--------------------------------------------------------------------------------------------------------------------------------------------------------------------------------|---------------------------------------------------------------------------------------------------------------------------------------------------------------------------------------------------------------------------------------------------------------------------------------------------------------------------------------------------|
| 24 | WASEKWAN or SICKLE GROUP
AMPHIBOLITE, CALC-SILICATE ROCK, METASEDIMENTARY ROCKS
24a - conglomerate, greywacke (AGMO); 24b - felsic gneiss (AGMF)
<i>unconformable</i> | GNEISSIC ROCKS OF PROBABLE WASEKWAN AGE
BURNTWOOD RIVER METAMORPHIC SUITE
24c - mafic gneiss, volcanic rock
greywacke, quartzite, marble (ABMN)
<i>conformable</i>
24d - amphibolite, tuff (AIMA)
<i>conformable</i>
23b - greywacke-derived gneiss, migmatite (ABSW)
23c - greywacke-derived gneiss and migmatite (AISW) |
| | 23 | |
| 22(AWV) | WASEKWAN GROUP
METASEDIMENTARY ROCKS
23a - greywacke, conglomerate, mafic mudstone (AWSW) | |
| 21(AWM) | FELSIC, INTERMEDIATE VOLCANICS
22a - dacite, rhyolite (AWVD)
21a - basalt, andesite (AWVA)
21b - basalt (AWVB) | |

* A four letter mnemonic name recorded as rock type as part of field observations
Geological boundary.....
Fault.....
No analytical result.....*

Provisional Compilation Map: Geology of the Granville Lake Area NTS 64C, by H.V. Zwanzig, Manitoba Dept. of Energy and Mines

Geological Survey of Canada
Resource Geophysics and Geochemistry Division

Manitoba Department of Energy and Mines
Mineral Resources Division

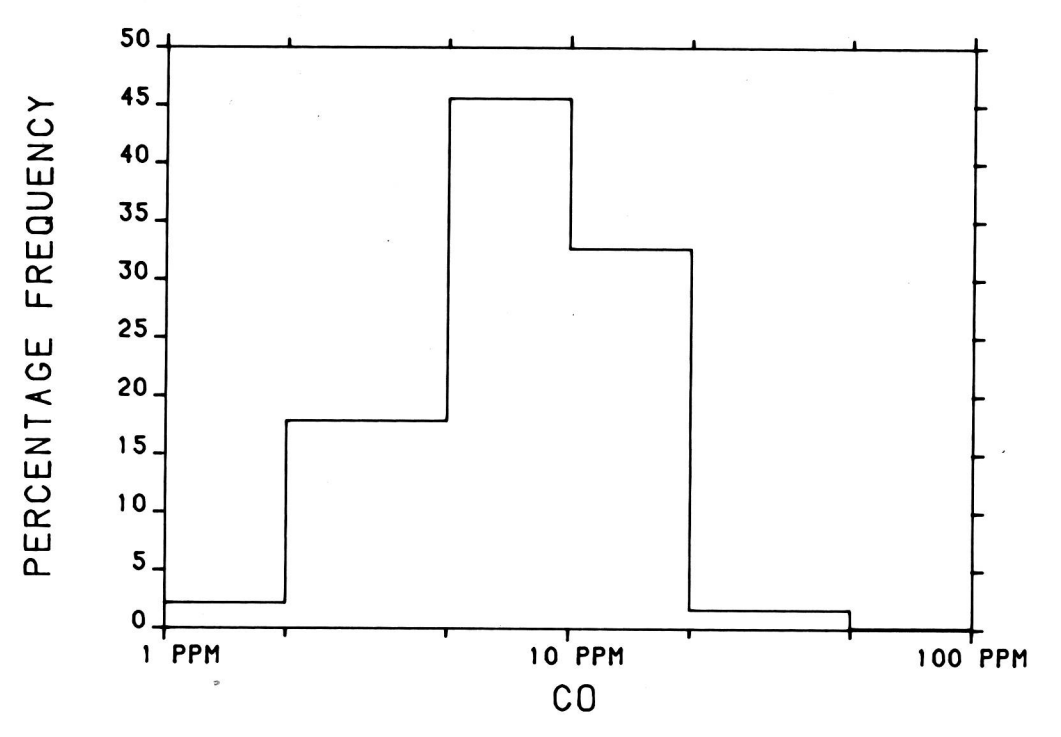
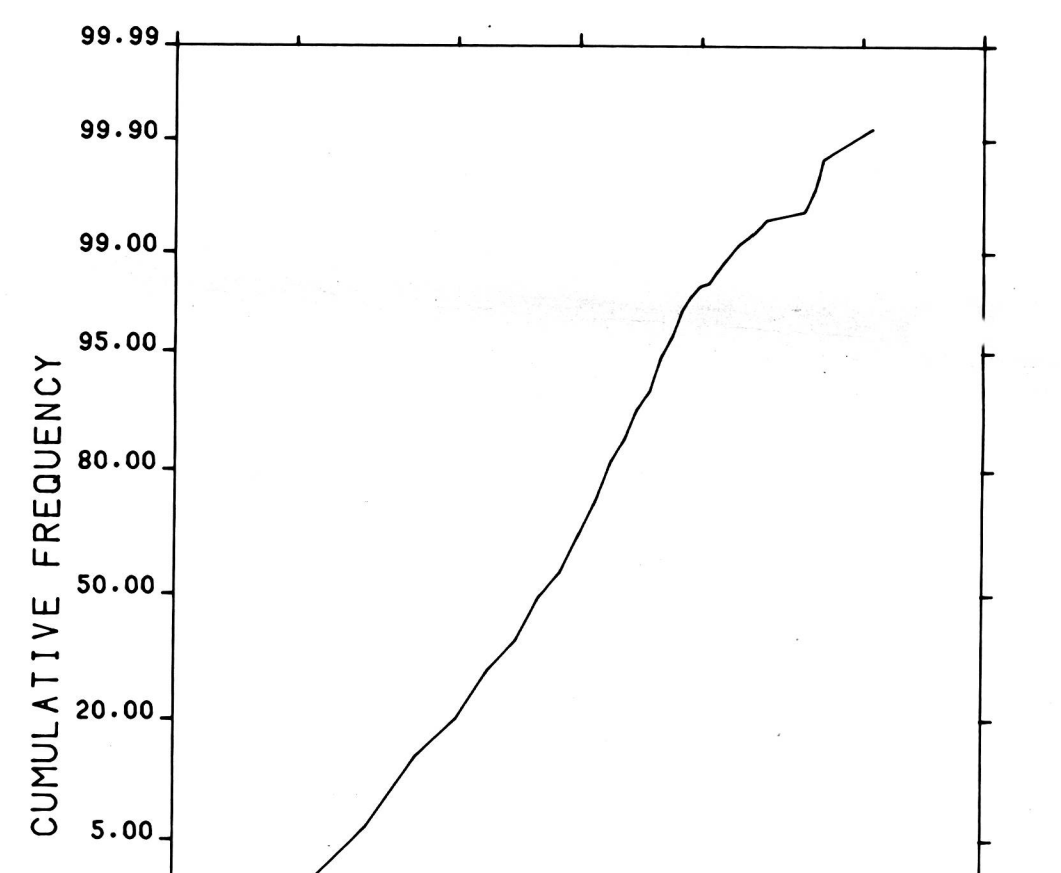
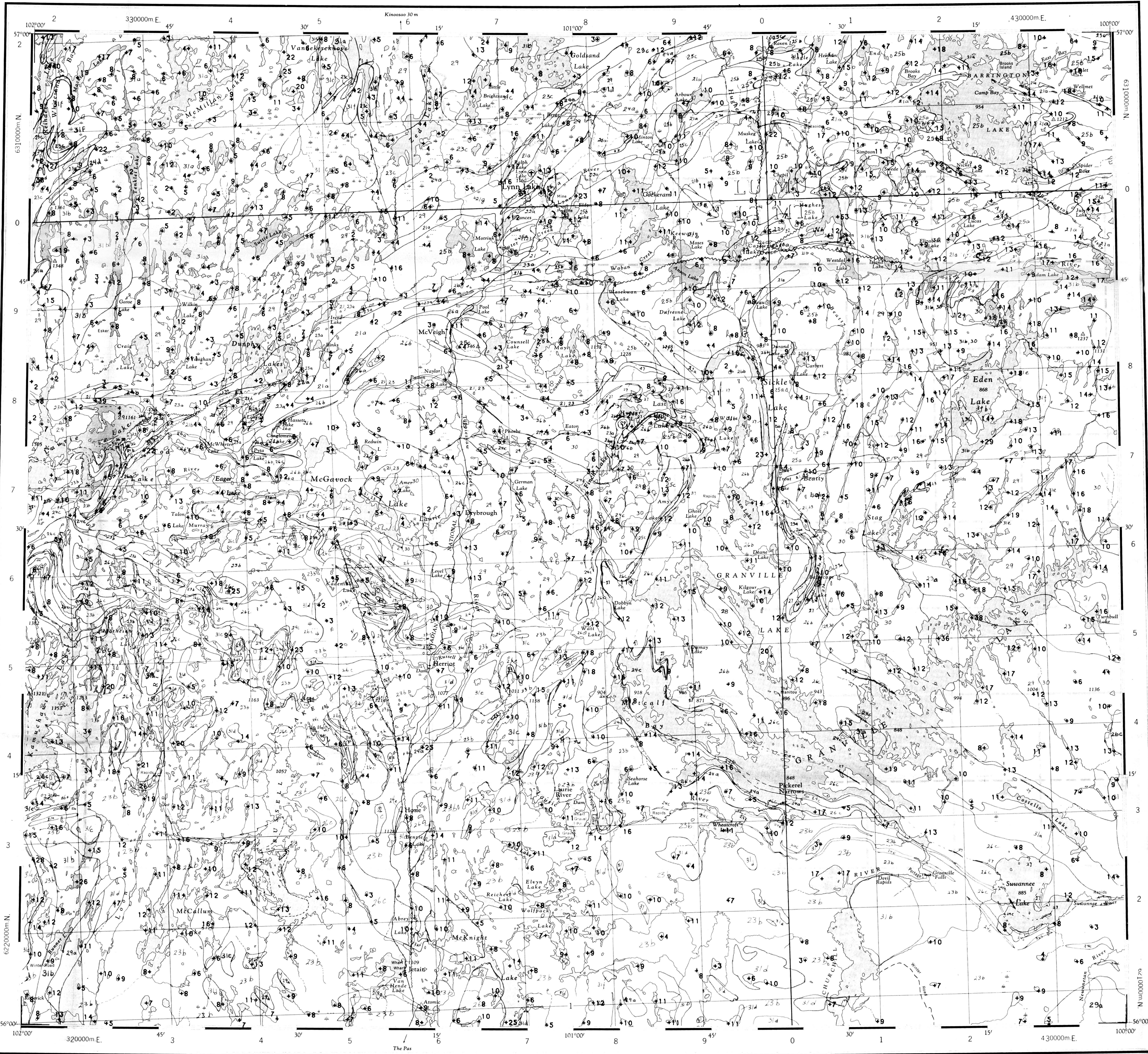
CONTRACTORS

Sample collection by Mollex Exploration
Sample preparation by Golder Associates

Sediment chemical analysis by Chemex Labs Ltd.
Water chemical analyses by Acme Analytical Laboratories Ltd.
Other water chemical analyses by Manitoba Technical Laboratory Services

This map forms one of a series of maps released by the Geological Survey of Canada, Open File 999. The Open File consists of maps of various geochemical variables: 16 for lake sediment, 8 for lake water and 1 sample site location

COBALT (ppm)
GSC OPEN FILE 999
LYNN LAKE AREA, MANITOBA

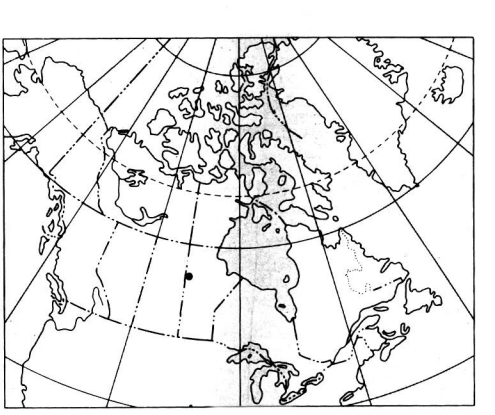


Copies of map material and listings of field observations and analytical data, from which the material was prepared, may be available at users expense by application to:

K.G. Campbell Corporation
880 Wellington St.
Bay 238
Ottawa, Ontario
K1R 6K7

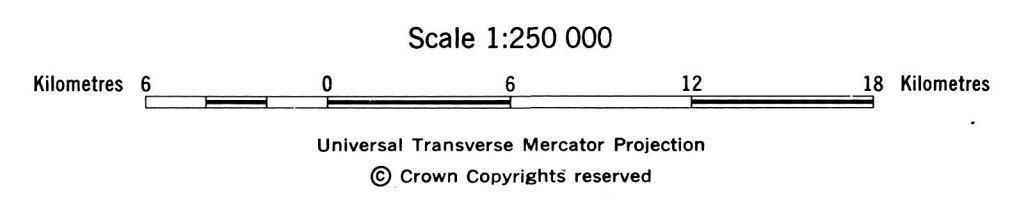
The data are also available in digital form. For further information please contact:

The Director
Computer Science Center
Department of Energy, Mines and Resources
Ottawa, Ontario
K1A 0E4

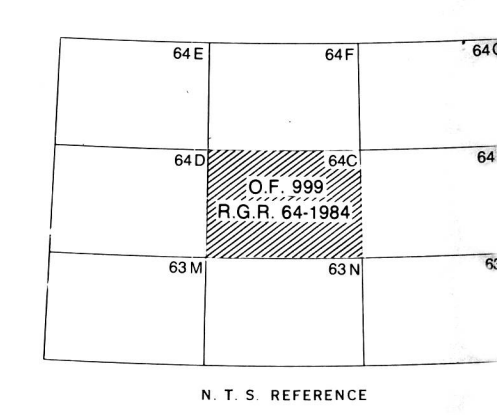


Elevation in feet above mean sea level
Mean magnetic declination 1984, 11°04.7' East decreasing 16.7' annually. Readings vary from 10°57.4' in the NE corner to 13°05.0' in the SW corner of the map area

COBALT (ppm)
GSC OPEN FILE 999
REGIONAL GEOCHEMICAL RECONNAISSANCE MAP 64-1983
CANADA/MANITOBA INTERIM MINERAL AGREEMENT
LAKE SEDIMENT AND WATER GEOCHEMICAL SURVEY
LYNN LAKE AREA, MANITOBA



Base-map from map published at the same scale by the Surveys and Mapping Branch in 1963



This map has been reprinted from a scanned version of the original map. Reproduction par numérisation d'une carte sur papier