

MANGANESE (ppm)
GSC OPEN FILE 999
LYNN LAKE AREA, MANITOBA
LEGEND

Note: This legend is common for Regional Geochemical Reconnaissance Map 64-1983, Open File 999

PROTEROZOIC (APHEBIAN)

- 31(AHIV) GRANITIC INTRUSIVE ROCKS, POST-SICKLE (HUDSONIAN) (AHIA to AHIF)
31a-leucotonalite + magnetite; 31b-megacrystic granite; 31c-granite, grano-diorite + hornblende; 31d leucogranite, granodiorite; 31e monzonite, syenite; 31f pegmatite
- 30 GRANITIC INTRUSIVE ROCKS, POST-SICKLE and remobilized PRE-SICKLE
30-granite, granodiorite (AHIG)
- 29 INTERMEDIATE INTRUSIVE ROCKS, POST-SICKLE and remobilized PRE-SICKLE
29-tonalite, granodiorite, quartz diorite (AHIT), 29a-pyroxene tonalite (AHIP)
- 28 MAFIC INTRUSIVE ROCKS, POST-SICKLE
28-gabbro, minor ultramafic rock (AHIR)
- 27 BLACK TROUT INTRUSIVE SUITE
27-quartz diorite, diorite (ATIQ)

- | | | | |
|---|--|---------------------------------|-------------------------------|
| SICKLE GROUP | | SICKLE METAMORPHIC SUITE | SOUTHERN INDIAN GNEISS |
| 26 ARKOSIC METASEDIMENTARY ROCKS, DERIVED GNEISS
26a-conglomerate (ASAC)
26b-arkosic sandstone (ASAS) | 26c-sandstone-derived gneiss, migmatite (ASAN)
<i>conformable?</i>
on Burntwood River M.S. | | |
| 25 PRE-SICKLE INTRUSIVE ROCKS
25a-gabbro, norite, ultramafic rock (APIR)
25b-tonalite, granodiorite, diorite (APIT)
25c-granite (APIG) | | | |

- | | |
|--|--|
| 24 WASEKWAN or SICKLE GROUP
AMPHIBOLITE, CALC-SILICATE ROCK, METASEDIMENTARY ROCKS
24a-conglomerate, greywacke (AGMC); 24b-felsic gneiss (AGMP)
<i>unconformable?</i> | GNEISSIC ROCKS OF PROBABLE WASEKWAN AGE |
|--|--|

- | | | |
|--|--|--|
| 23 WASEKWAN GROUP
METASEDIMENTARY ROCKS
23a-greywacke, conglomerate, mafic mudstone (AWSW) | BURNTWOOD RIVER METAMORPHIC SUITE
23c mafic gneiss, volcanic rock
greywacke, quartzite, marble (ABMN)
<i>conformable</i>
23b-greywacke-derived gneiss, migmatite (ABSW)
<i>conformable</i> | 23d-amphibolite, tuff (AIMA)
<i>conformable</i> |
| 22(AWVI) FELSIC, INTERMEDIATE VOLCANICS
22a-dacite, rhyolite (AWVD) | | |

- | | | |
|--|--|--|
| 21(AWVM) MAFIC, INTERMEDIATE VOLCANICS
21a-basalt, andesite (AWVA)
21b-basalt (AWVB) | | |
|--|--|--|

* A four letter mnemonic name recorded as rock type as part of field observations
Geological boundary.....
Fault.....
No analytical result.....*

Provisional Compilation Map: Geological of the Granville Lake Area NTS 64C, by H.V. Zwanzig, Manitoba Dept. of Energy and Mines

Geological Survey of Canada
Resource Geophysics and Geochemistry Division

Manitoba Department of Energy and Mines
Mineral Resources Division

CONTRACTORS

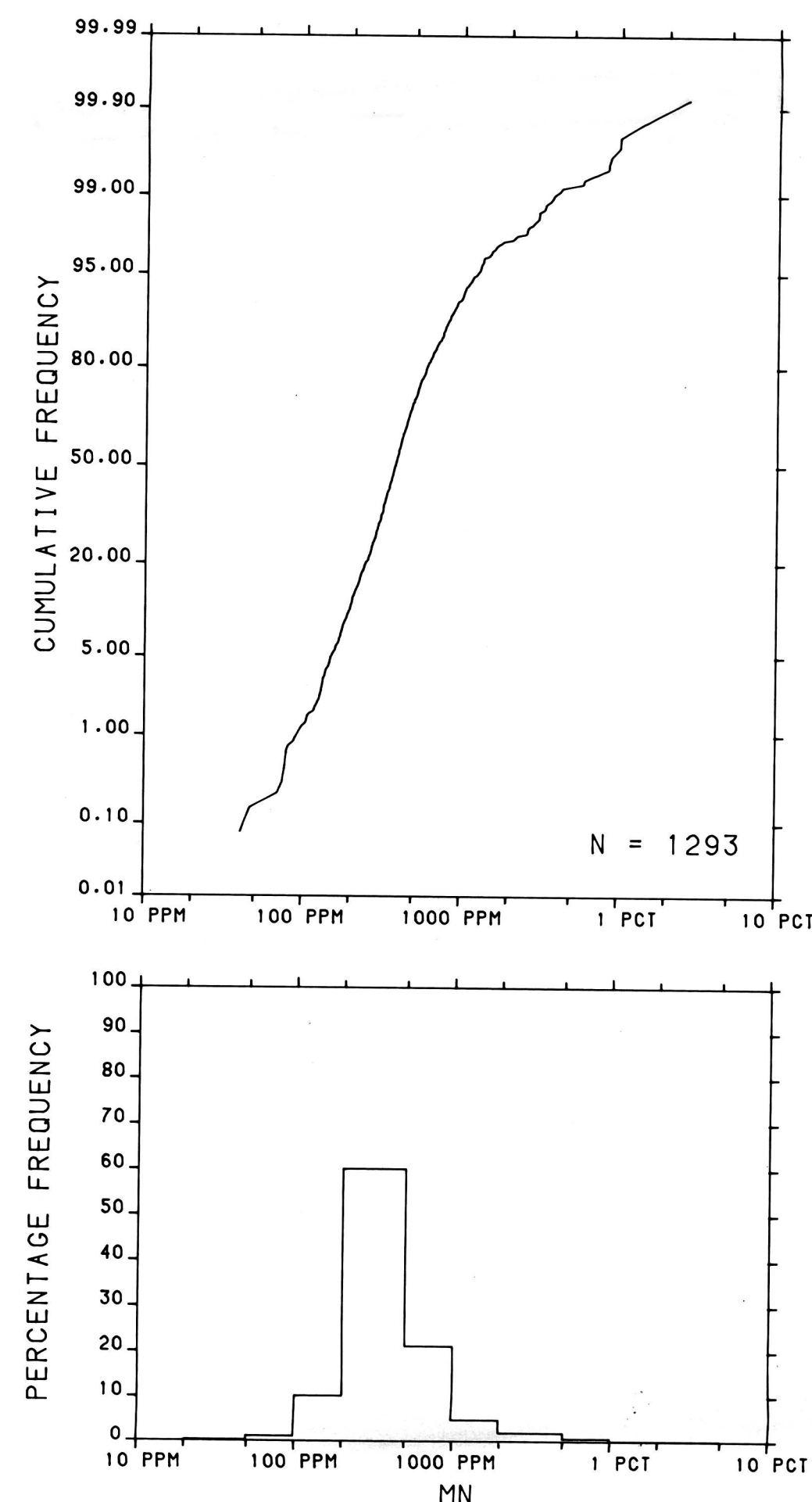
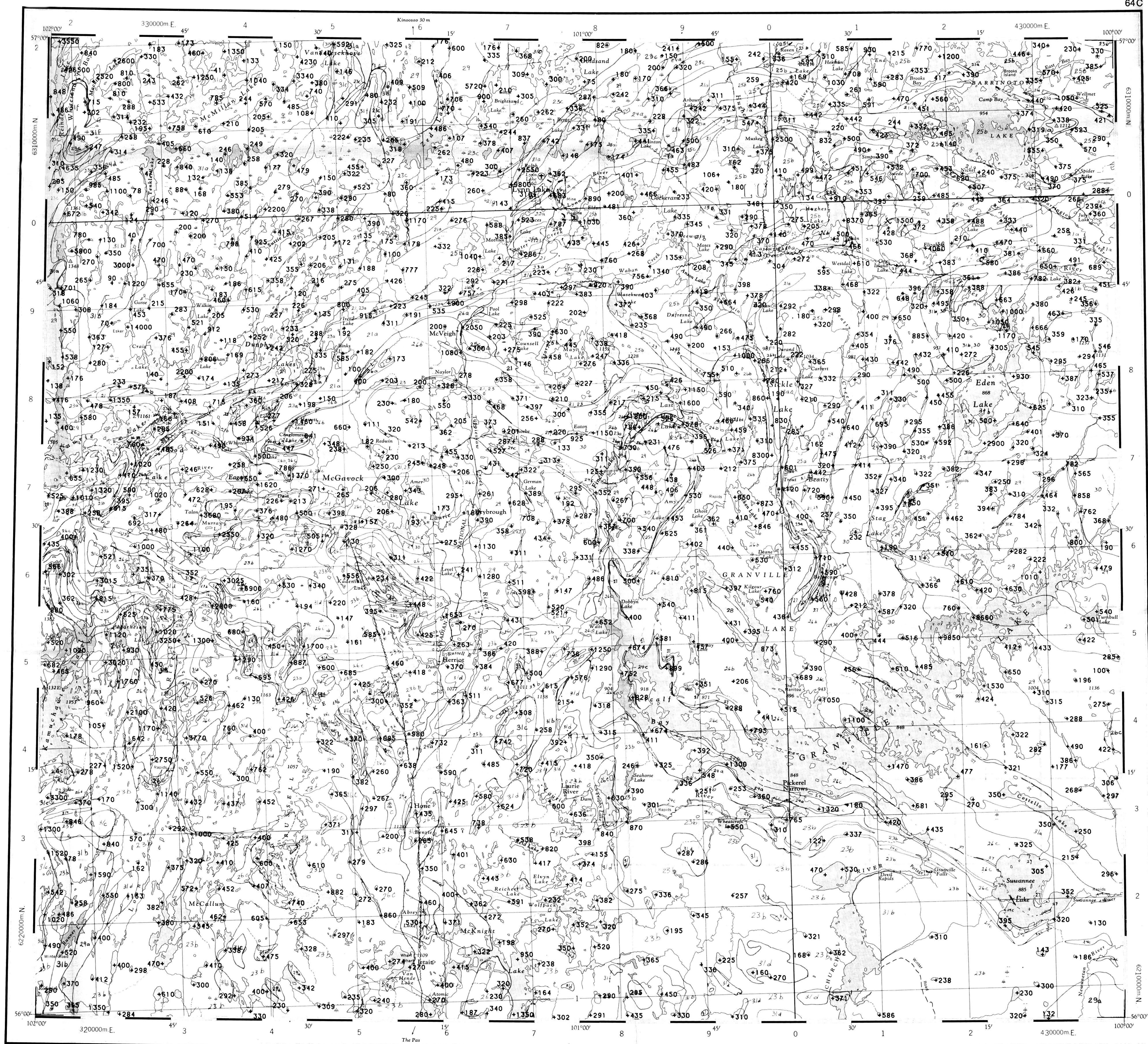
Sample collection by Wollex Exploration
Sample preparation by Golder Associates

Sediment chemical analysis by Chemex Labs Ltd.
Water chemical analyses by Acme Analytical Laboratories Ltd.
Other water chemical analyses by Manitoba Technical Laboratory Services

This map forms one of a series of maps released by the Geological Survey of Canada, Open File 999. The Open File consists of maps of various geochemical variables: 16 for lake sediment, 8 for lake water and 1 sample site location

MANGANESE (ppm)
GSC OPEN FILE 999
LYNN LAKE AREA, MANITOBA

This map has been reprinted from a scanned version of the original map
Reproduction par numérisation d'une carte sur papier

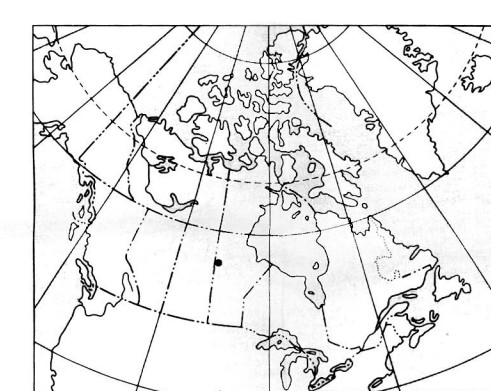


Copies of map material and listings of field observations and analytical data, from which the material was prepared, may be available at users expense by application to:

K.G. Campbell Corporation
880 Wellington St.
Bay 238
Ottawa, Ontario
K1R 6K7

The data are also available in digital form. For further information please contact:

The Director
Computer Science Center
Department of Energy, Mines and Resources
Ottawa, Ontario
K1A 0E4



Elevation in feet above mean sea level

Mean magnetic declination 1984, 11°04.7' East
decreasing 16.7' annually. Readings vary from
10°57.4' in the NE corner to 13°05.0' in the
SW corner of the map area

MANGANESE (ppm)

GSC OPEN FILE 999
REGIONAL GEOCHEMICAL RECONNAISSANCE MAP 64-1983
CANADA/MANITOBA INTERIM MINERAL AGREEMENT
LAKE SEDIMENT AND WATER GEOCHEMICAL SURVEY
LYNN LAKE AREA, MANITOBA

Scale 1:250 000

Kilometres 6 0 6 12 18 Kilometres

Universal Transverse Mercator Projection
© Crown Copyrights reserved

Base-map from map published at the same scale
by the Surveys and Mapping Branch in 1963

