

This document was produced
by scanning the original publication.

Ce document est le produit d'une
numérisation par balayage
de la publication originale.



GEOLOGICAL SURVEY OF CANADA

OPEN FILE 964

**FRACTURE FRAMEWORK - A CONTROLLING FACTOR IN THE
ACCUMULATION OF HYDROCARBONS IN SOUTHWESTERN ONTARIO**

B.V. Sanford and G.H. McFall

1984

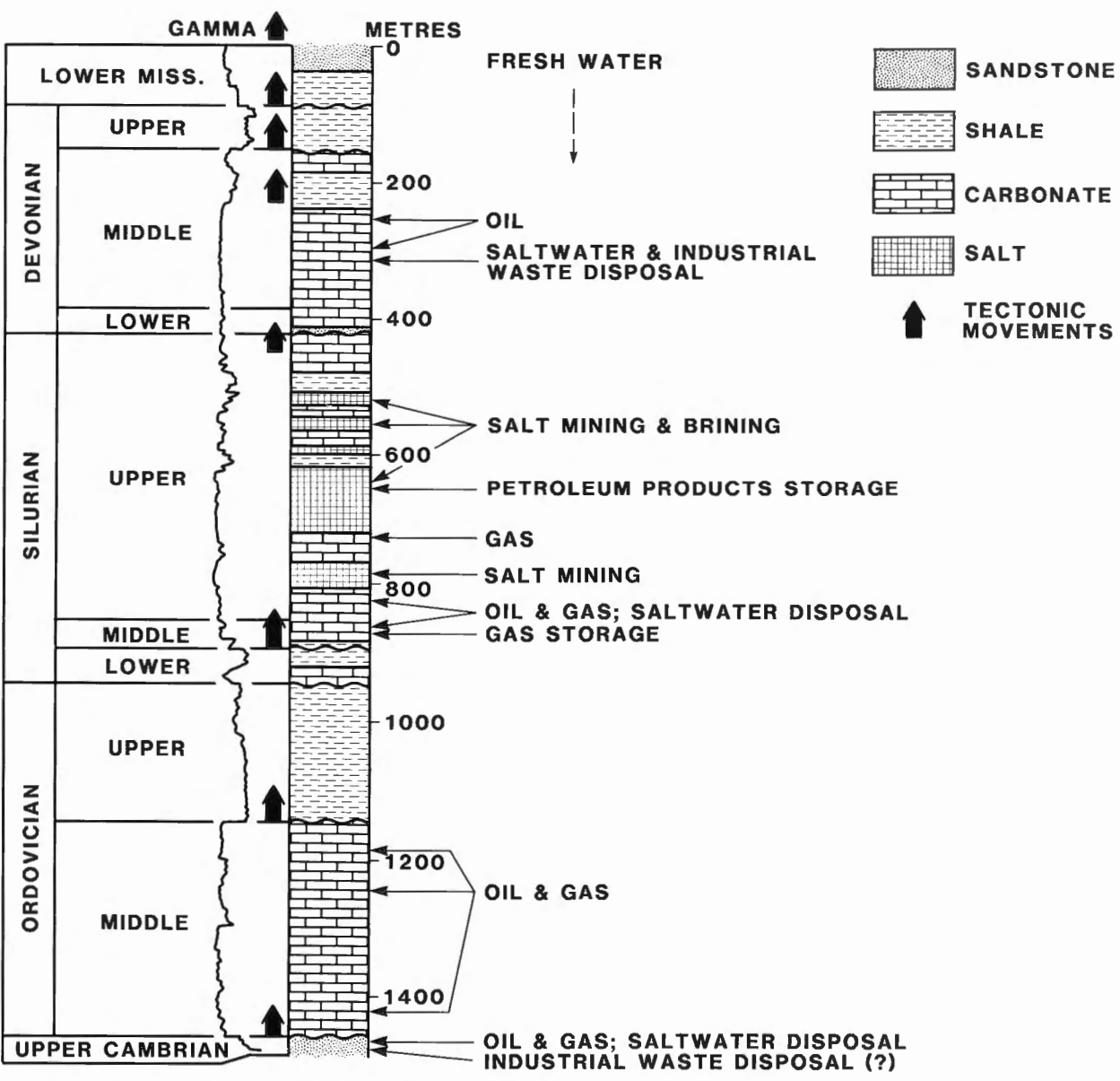
\$5.00

Fracture Framework - A Controlling Factor in the
Accumulation of Hydrocarbons in Southwestern Ontario

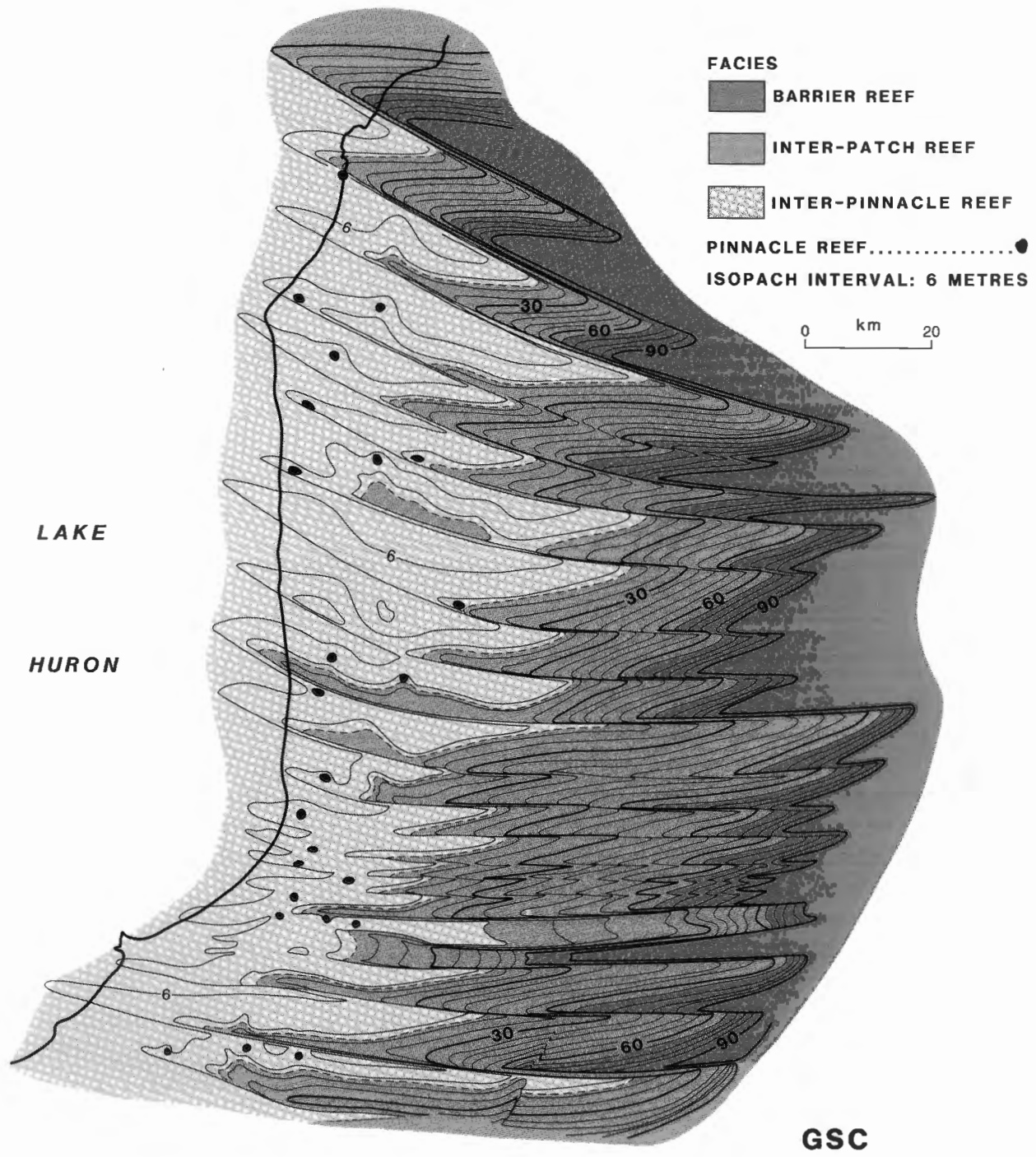
B.V. Sanford and G.H. McFall

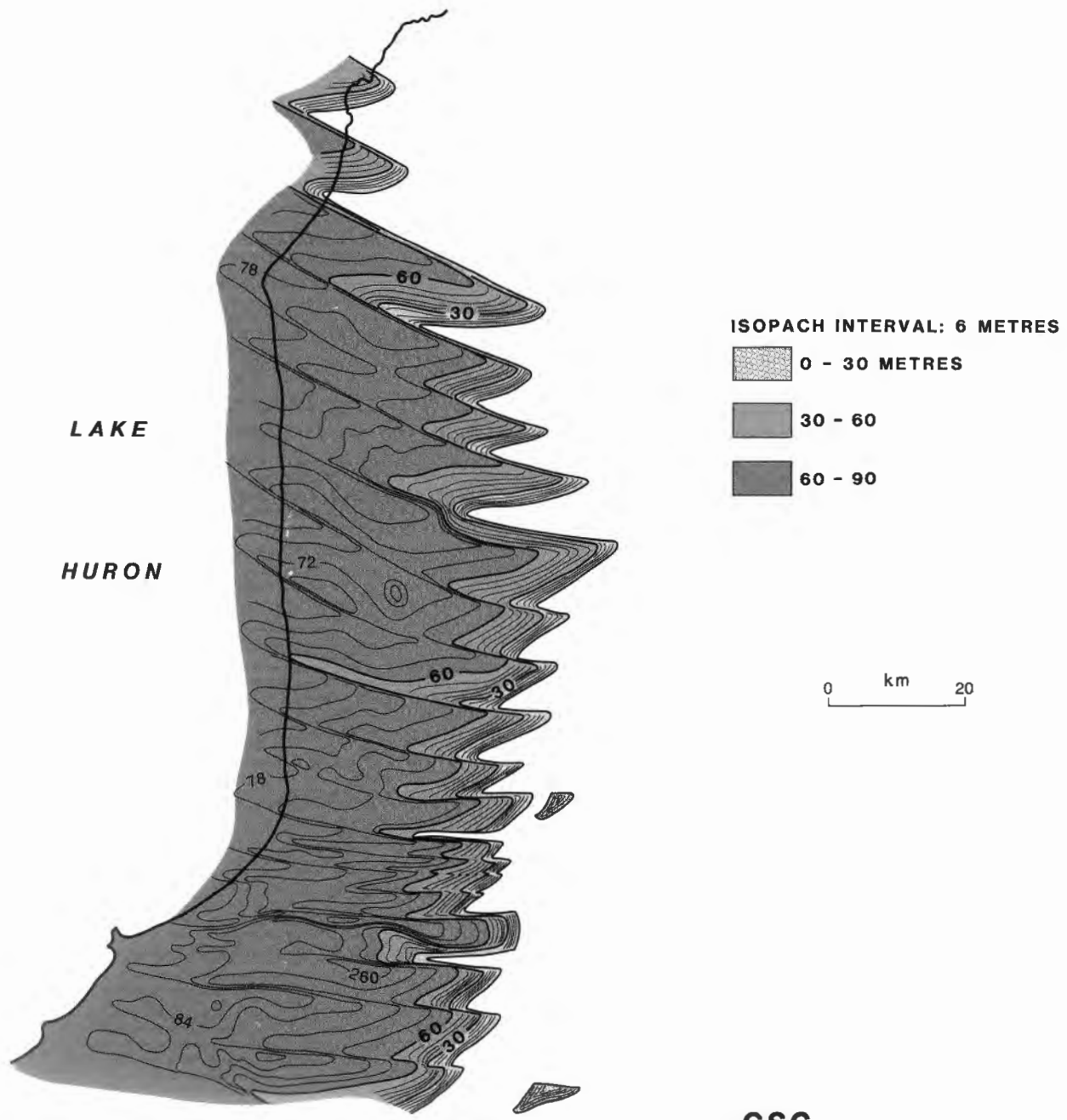
CONTENTS

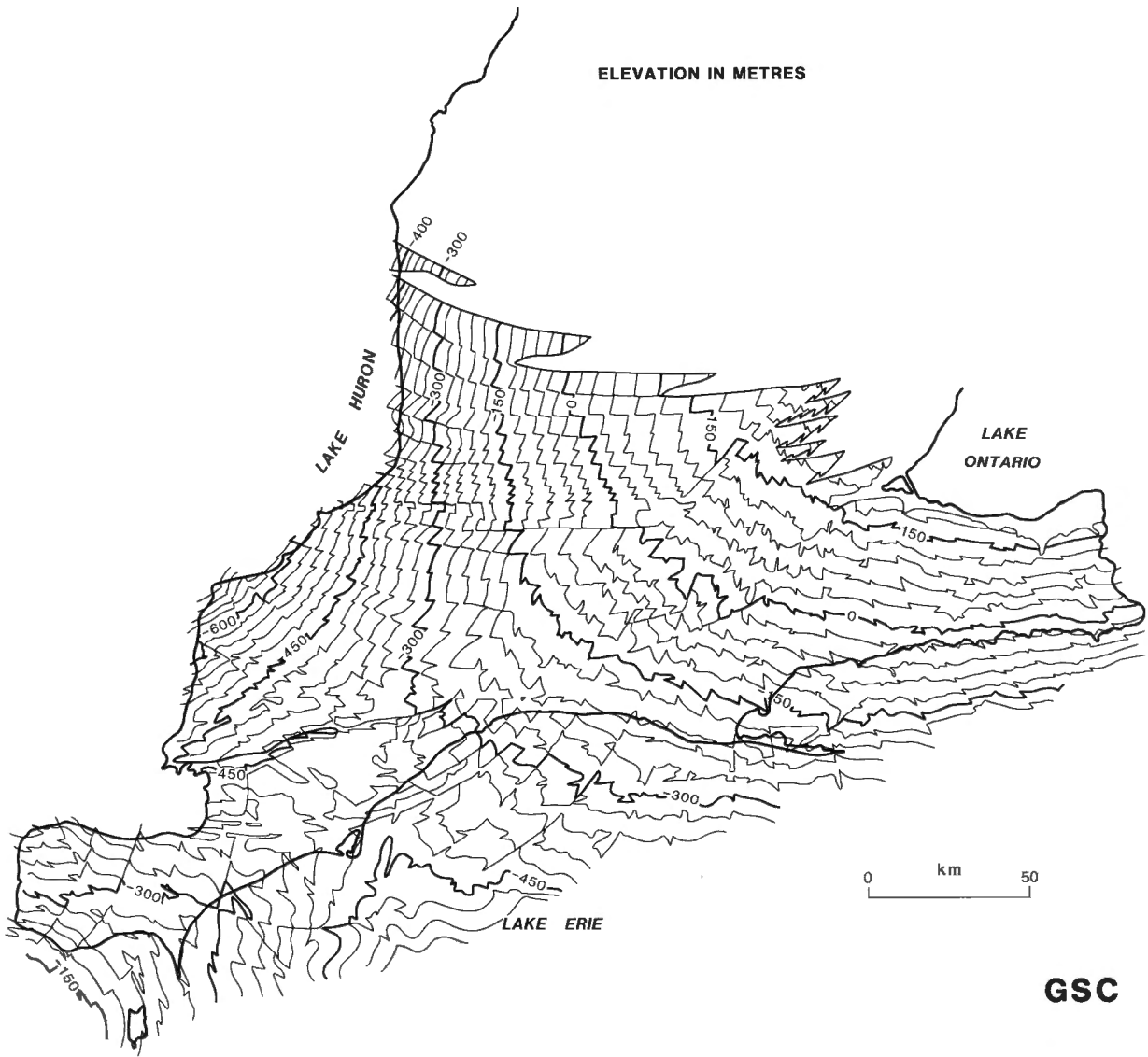
1. Basin utilization, southwestern Ontario.
2. Isopach and facies of Guelph carbonate, Huron area.
3. Isopach of B unit Salina salt, Huron area.
4. Structure contours on Rochester Formation, southwestern Ontario.
5. Conceptual fracture framework, southwestern Ontario.
6. Upper Cambrian paleogeology, southwestern Ontario.
7. Upper Cambrian (block rotation) play, example - Clearville area.
8. Middle Ordovician carbonates, southwestern Ontario.
9. Middle Ordovician (permeability pinchout) play, example - Dover area.
10. Middle Silurian (Guelph) facies and reef trends, southwestern Ontario.
11. Middle Silurian (patch and pinnacle reef) play, example - Wallaceburg area.
12. Upper Salina evaporites, southwestern Ontario.
13. Isopach of Bass Islands carbonate, Kent county.

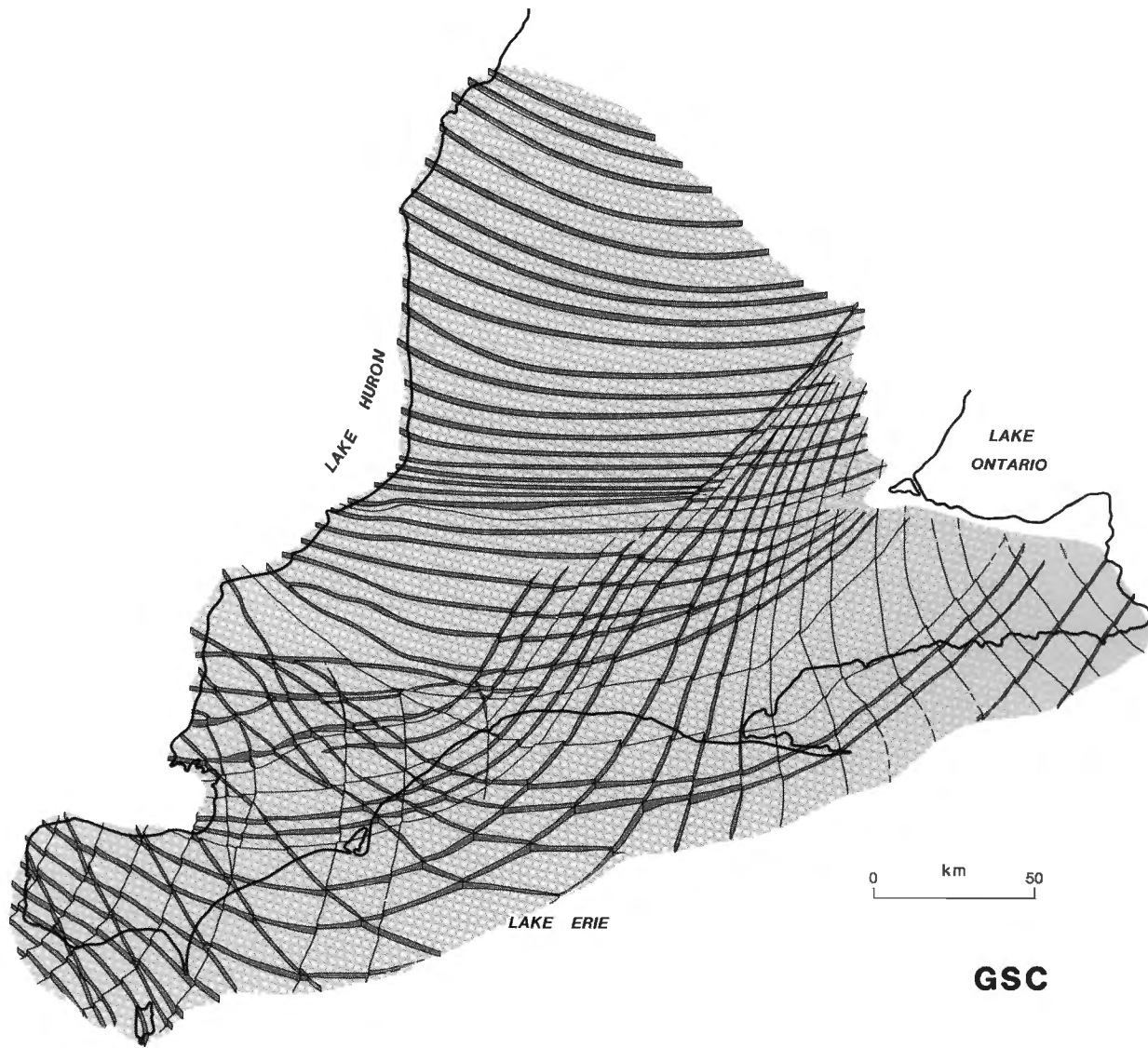


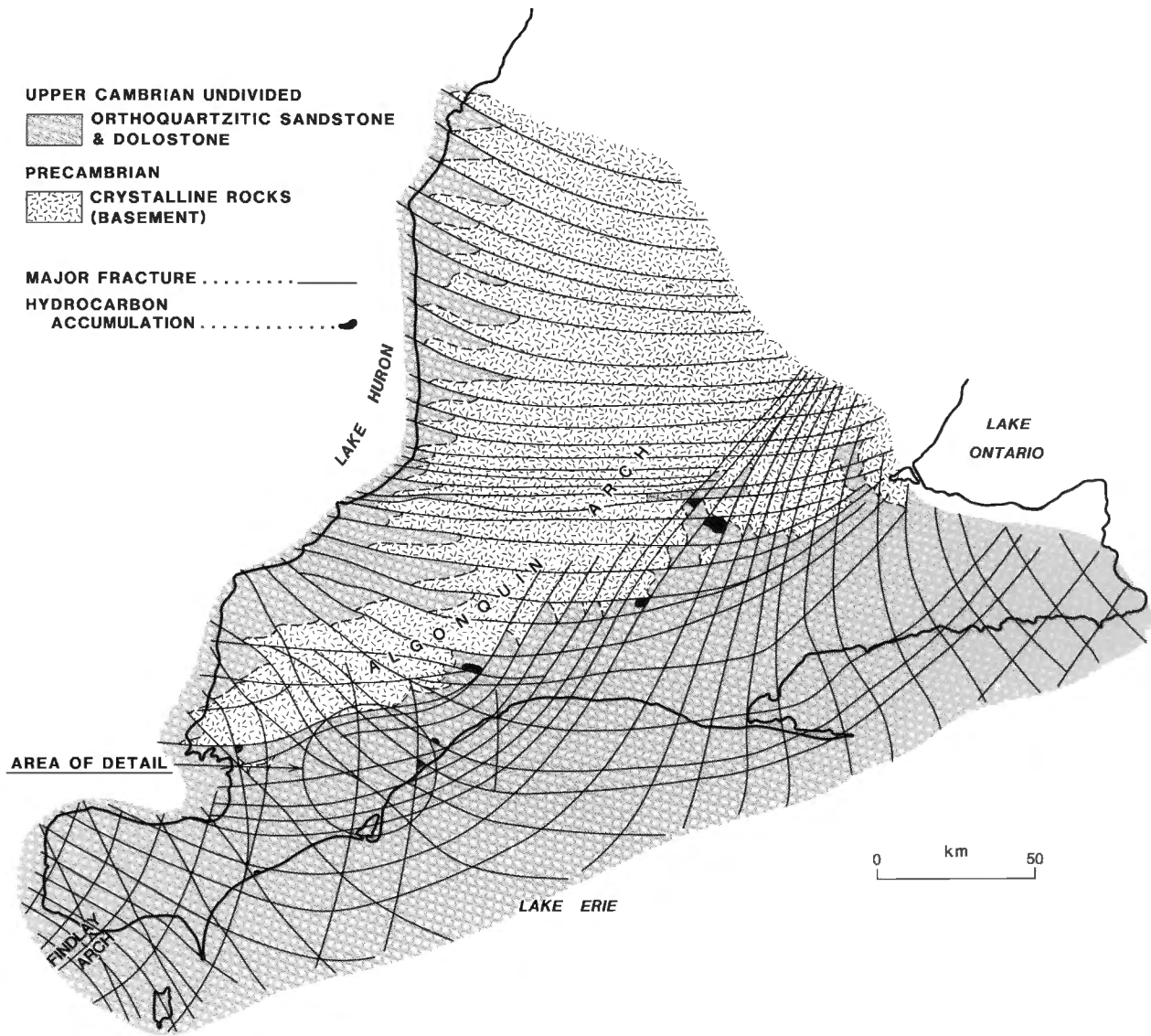
GSC





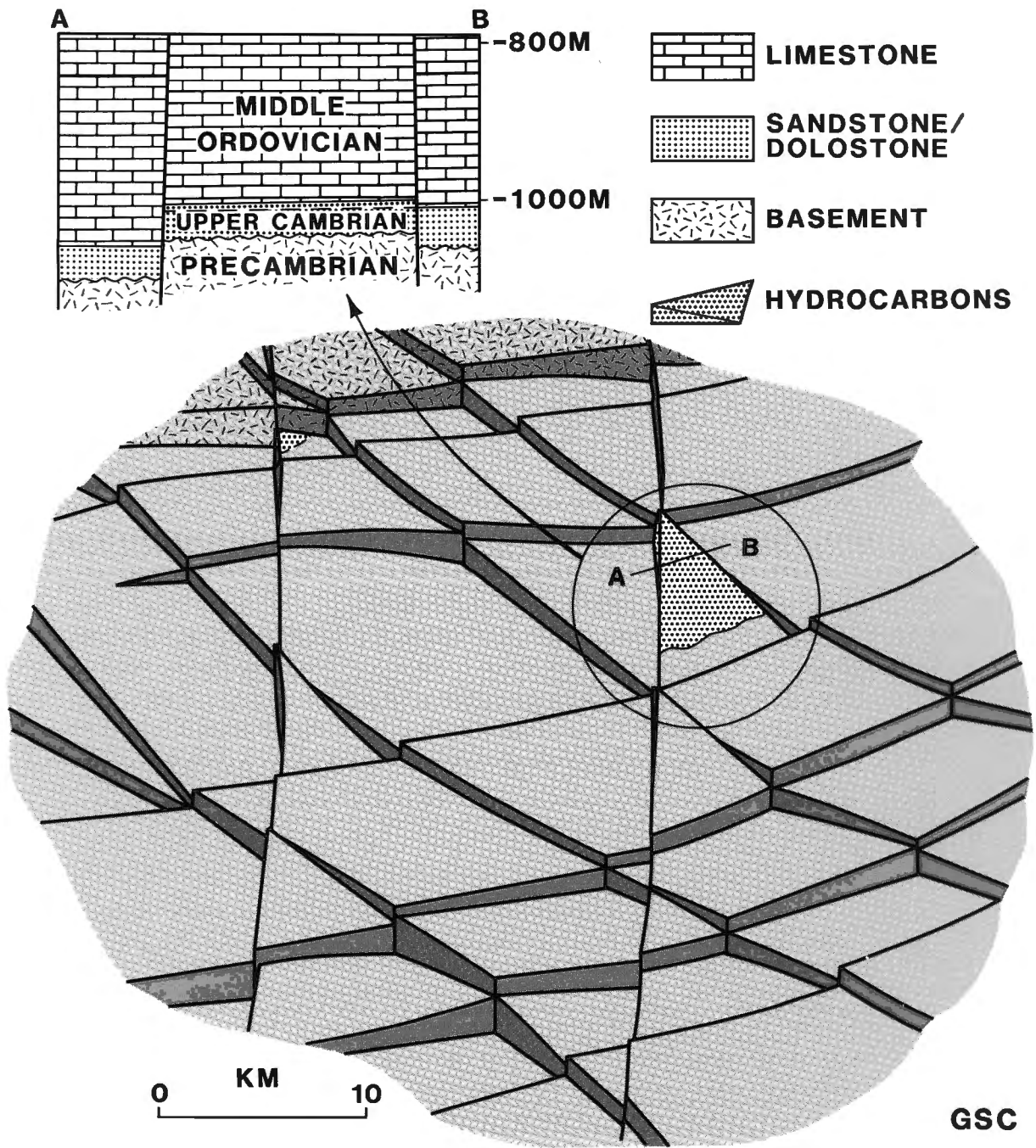


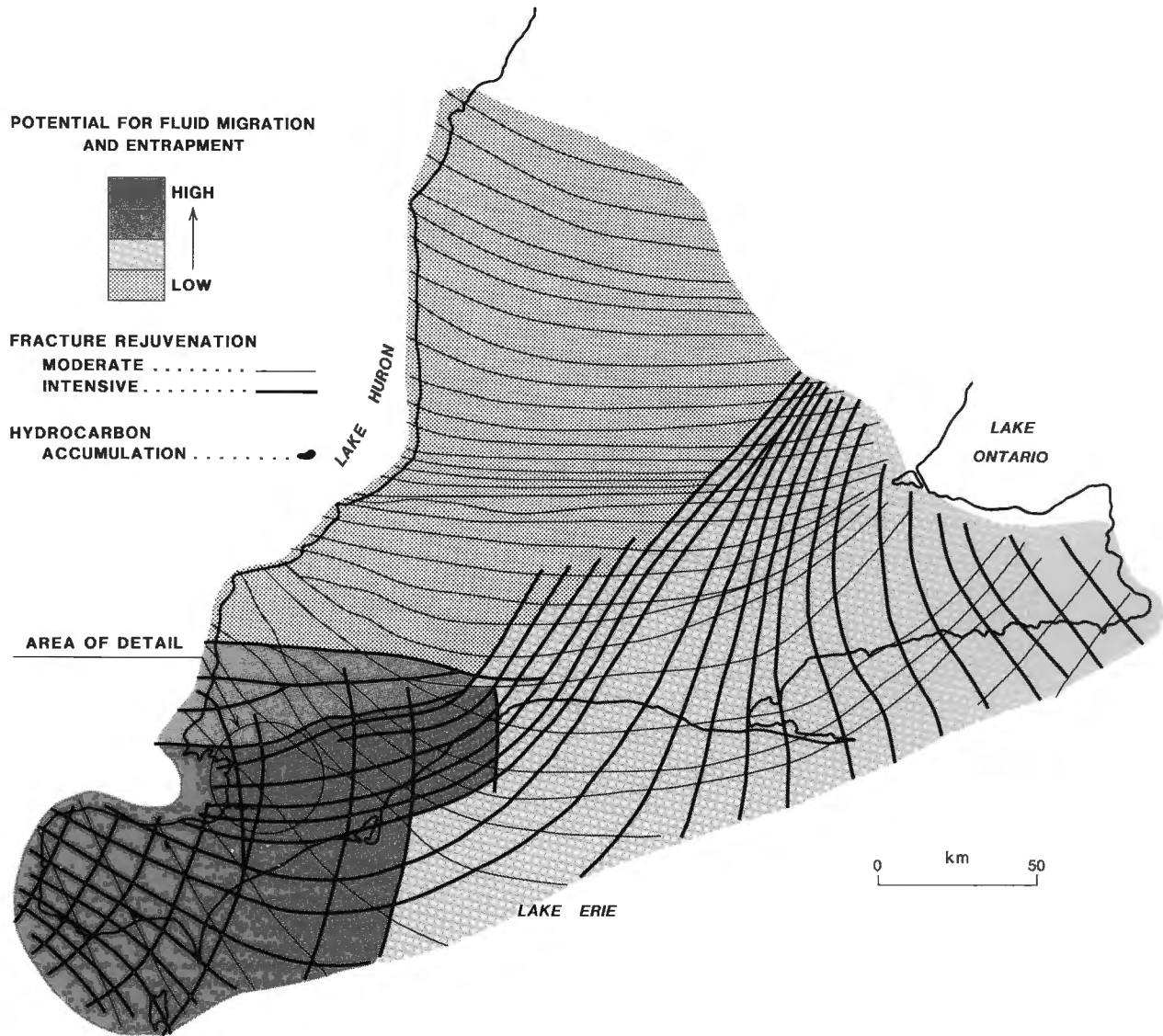




(see 7 for area of detail)

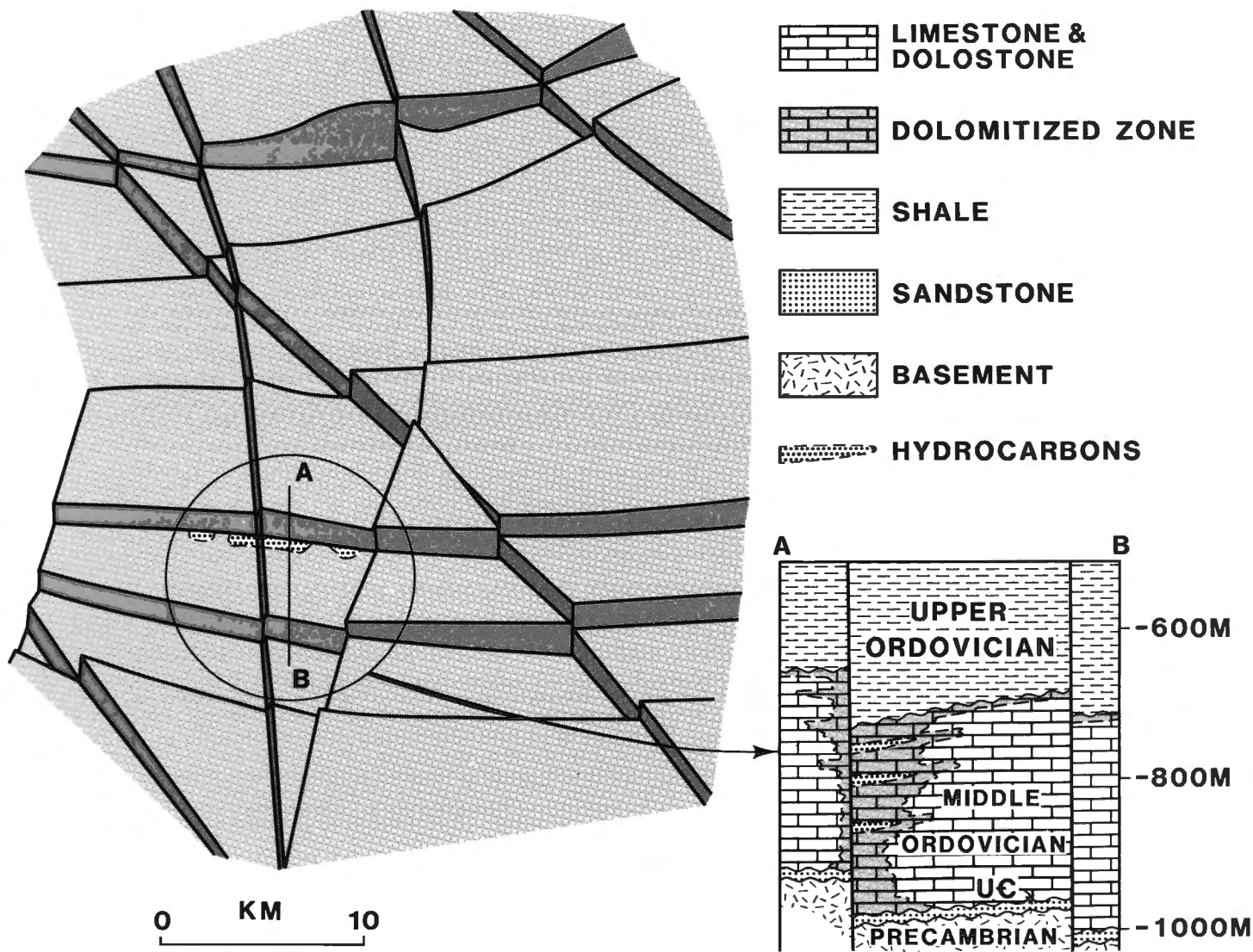
GSC



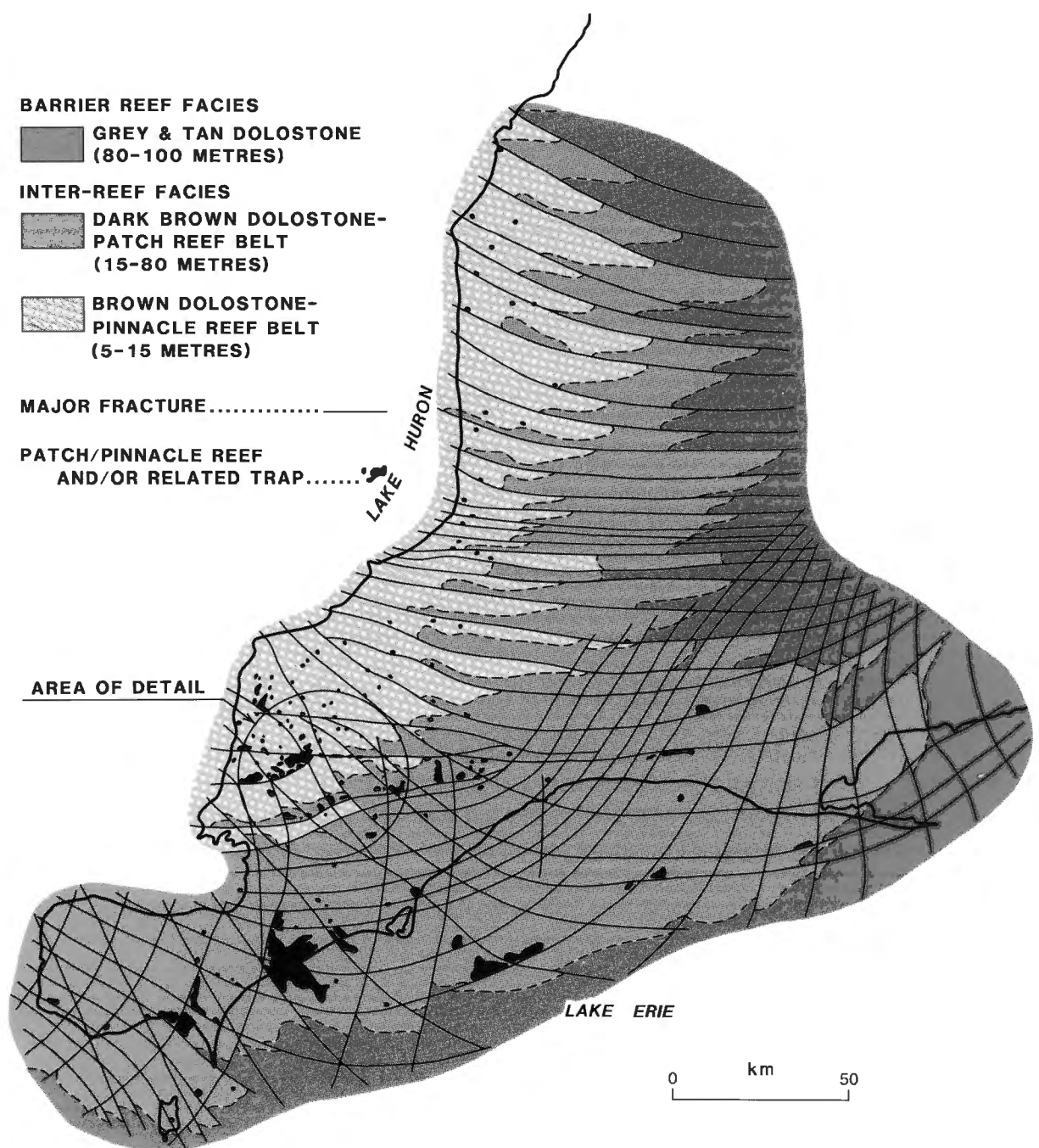


(see 9 for area of detail)

GSC

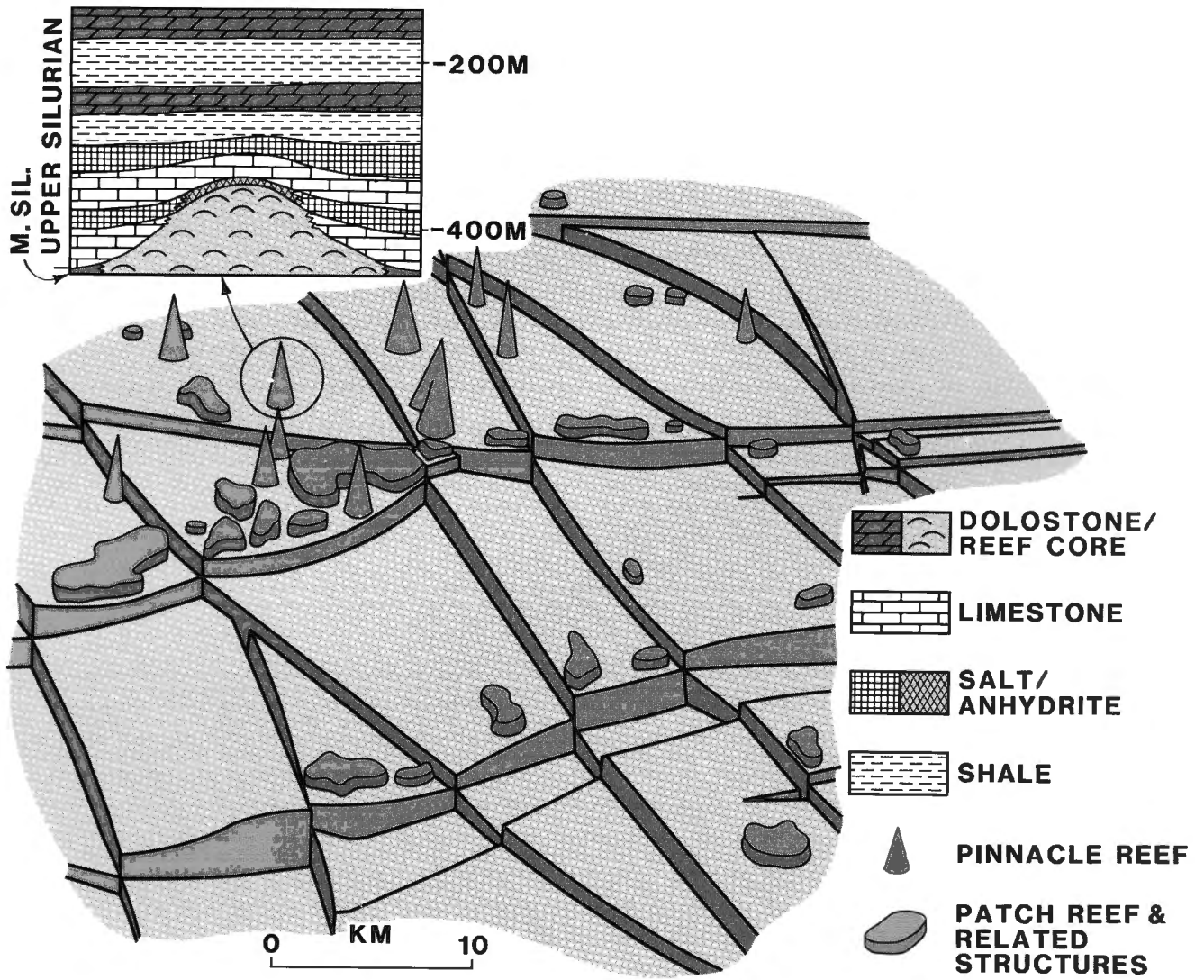


GSC

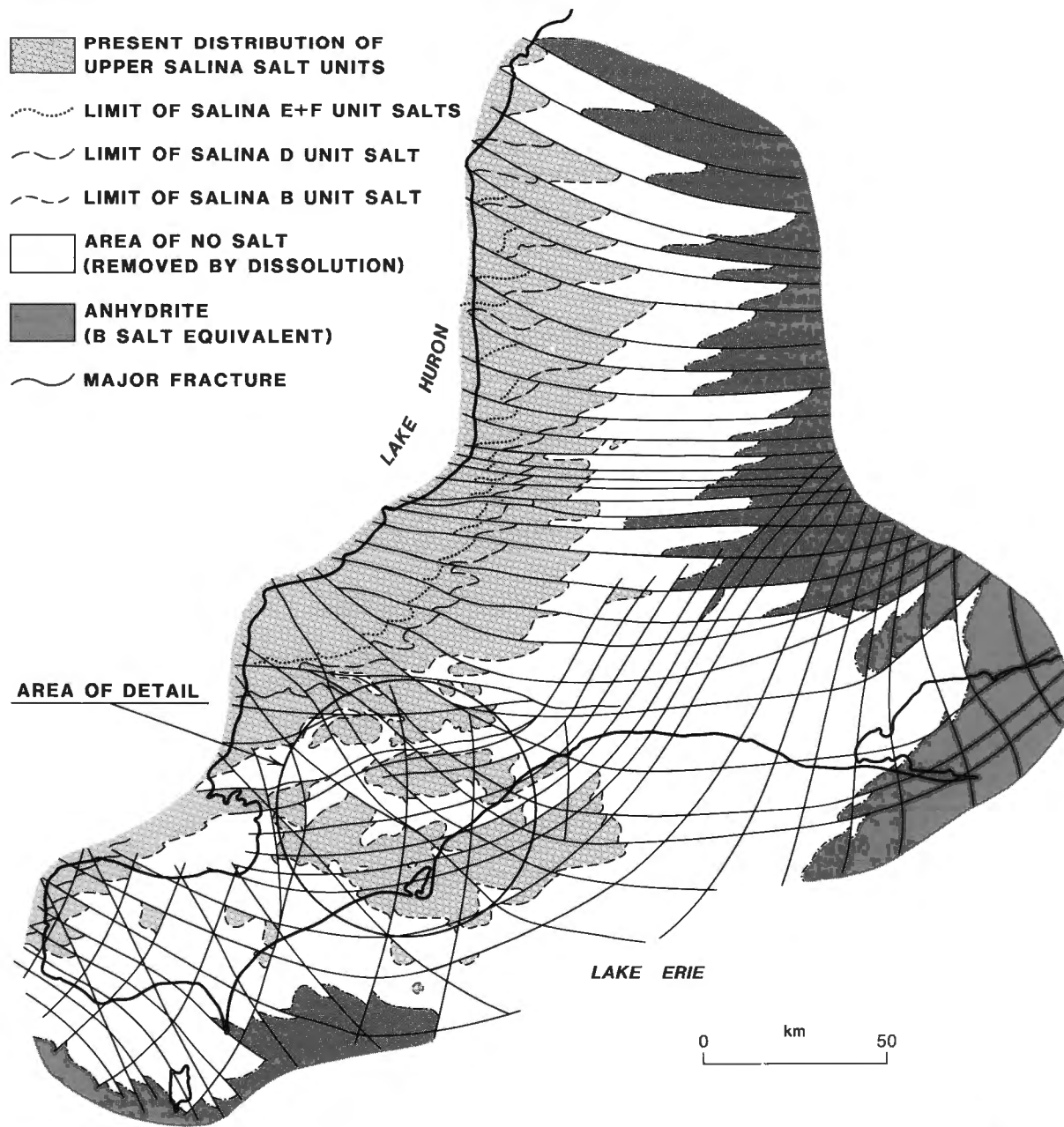


(see 11 for area of detail)

GSC



GSC



(see 13 for area of detail)

GSC

