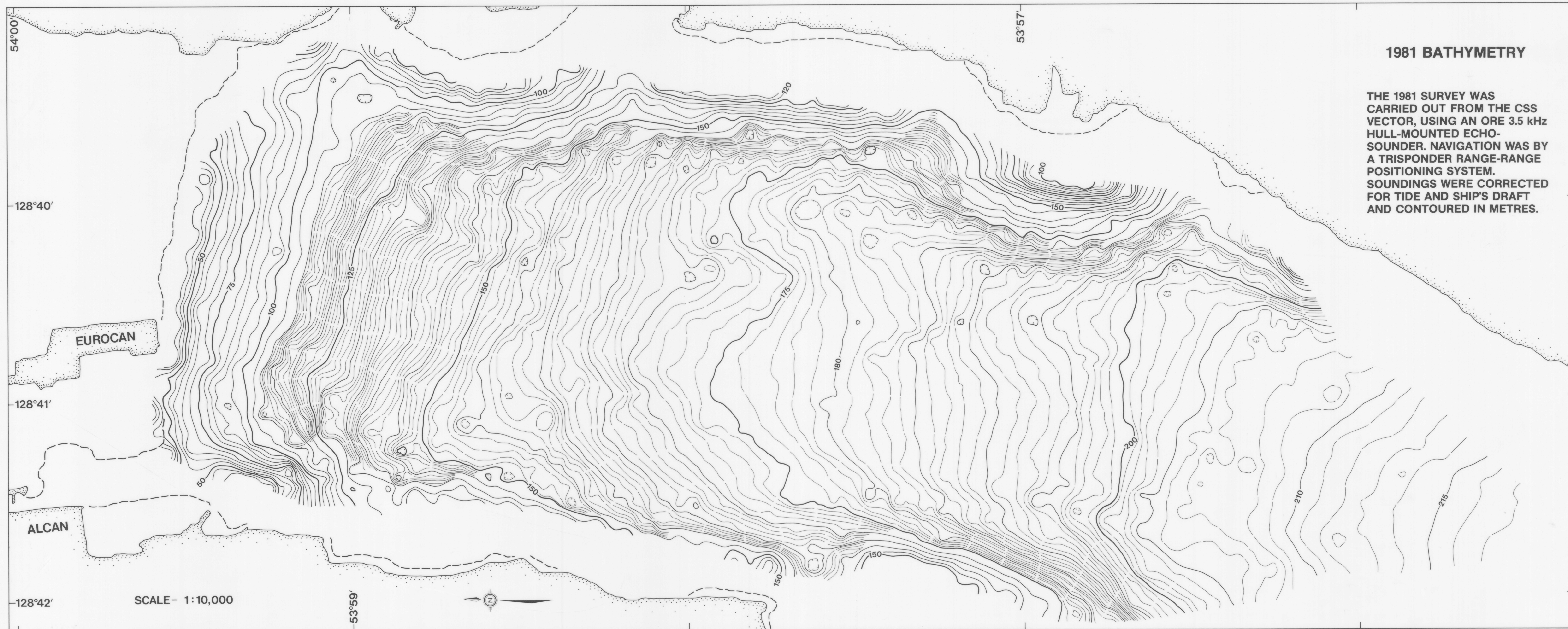


### 1952 BATHYMETRY

THE 1952 SURVEY WAS UNDERTAKEN BY THE CANADIAN HYDROGRAPHIC SERVICE, USING A 12 kHz ECHO-SOUNDER IN A SURVEY LAUNCH LOCATED BY SEXTANT ANGLES TO SHORE MARKERS. ORIGINAL SOUNDING RECORDS HAVE BEEN REANALYZED, CORRECTED FOR TIDE AND DRAFT AND CONVERTED TO METRES.

3 of 5



### 1981 BATHYMETRY

THE 1981 SURVEY WAS CARRIED OUT FROM THE CSS VECTOR, USING AN ORE 3.5 kHz HULL-MOUNTED ECHO-SOUNDER. NAVIGATION WAS BY A TRISPOUNDER RANGE-RANGE POSITIONING SYSTEM. SOUNDINGS WERE CORRECTED FOR TIDE AND SHIP'S DRAFT AND CONTOURED IN METRES.