

LEGEND

- QUATERNARY
PLEISTOCENE AND RECENT
Qa1 Till, alluvium, colluvium, lake silts
- CRETACEOUS
UPPER CRETACEOUS
uKw MERTON FORMATION: sandstone, mudstone, siltstone
uKko KOTANEZEE FORMATION: dark marine shale and siltstone
uKd DOWRYAN FORMATION: carbonaceous sandstone, massive conglomerate, dark shale
- FORT ST. JOHN GROUP uKau-Kga
uKsu SULLY FORMATION: dark grey sideritic shale
- LOWER CRETACEOUS
Ks1 SIGAWI FORMATION: grey sandstone, siltstone, shale
Kl1 LEPINE FORMATION: sideritic rusty weathering shale
Kt TUSOCK MEMBER: grey sandstone, siltstone, shale
Kw WILBORN MEMBER: arenaceous shale
Kbu BULLOCK MEMBER: glauconitic sandstone and siltstone
Kga GABRIEL FORMATION: sideritic rusty weathering shale
- BUCKINGHORSE FORMATION: dark marine shale and siltstone
- Ksc SCATTER FORMATION: (undivided)
- TRIASSIC
Tl1 LUDINGTON, BALDORREZ AND PARSONS FORMATIONS: dolomite siltstone, light grey limestone, dark grey limestone
Tl2 LEARD FORMATION: orange brown dolomite and calcareous sandstone, siltstone; minor limestone
Tt TOAD FORMATION: dark grey calcareous siltstone and shale; minor fine grained sandstone
Tg GRAYLING FORMATION: siliceous grey locally calcareous shale, basal fine grained sandstone
- PERMIAN
Pf FANTASQUE FORMATION: dark grey siltstone
Pk KINLOE FORMATION: grey-brown fine grained calcareous sandstone, siltstone; dark grey shale
- CARBONIFEROUS
LOWER CARBONIFEROUS
Mm MATSON FORMATION: fine and medium grained quartzose sandstone, shale
- DEVONIAN AND CARBONIFEROUS
Db BESA RIVER FORMATION: dark grey, pyritic, siliceous shale; minor siltstone
- DEVONIAN
Dd DURETIN FORMATION: medium grey well bedded fine grained limestone; minor calcarenite
Ds STONE FORMATION: light grey, very finely crystalline dolomite, dolomite breccia
Dw WOKEPASH FORMATION: yellow weathering fine-grained sandstone, dolomite, siltstone; minor dolomite breccia
Dm MURCHIE-MACDONNELL FORMATION: medium grey finely crystalline dolomite; minor shale and sandstone
- SILURIAN
Sn NORDA FORMATION: dark grey medium crystalline oolitic dolomite; minor white orthoquartzite
- ORDOVICIAN
LOWER ORDOVICIAN
Ok KOBRIKA FORMATION: light grey limestone, argillaceous limestone
- CAMBRIAN
LOWER CAMBRIAN
Cs Red weathering coarse conglomerate, sandstone; minor limestone
Pt TUCHOYI FORMATION: dolomite, dolomite siltstone, sandstone, shale

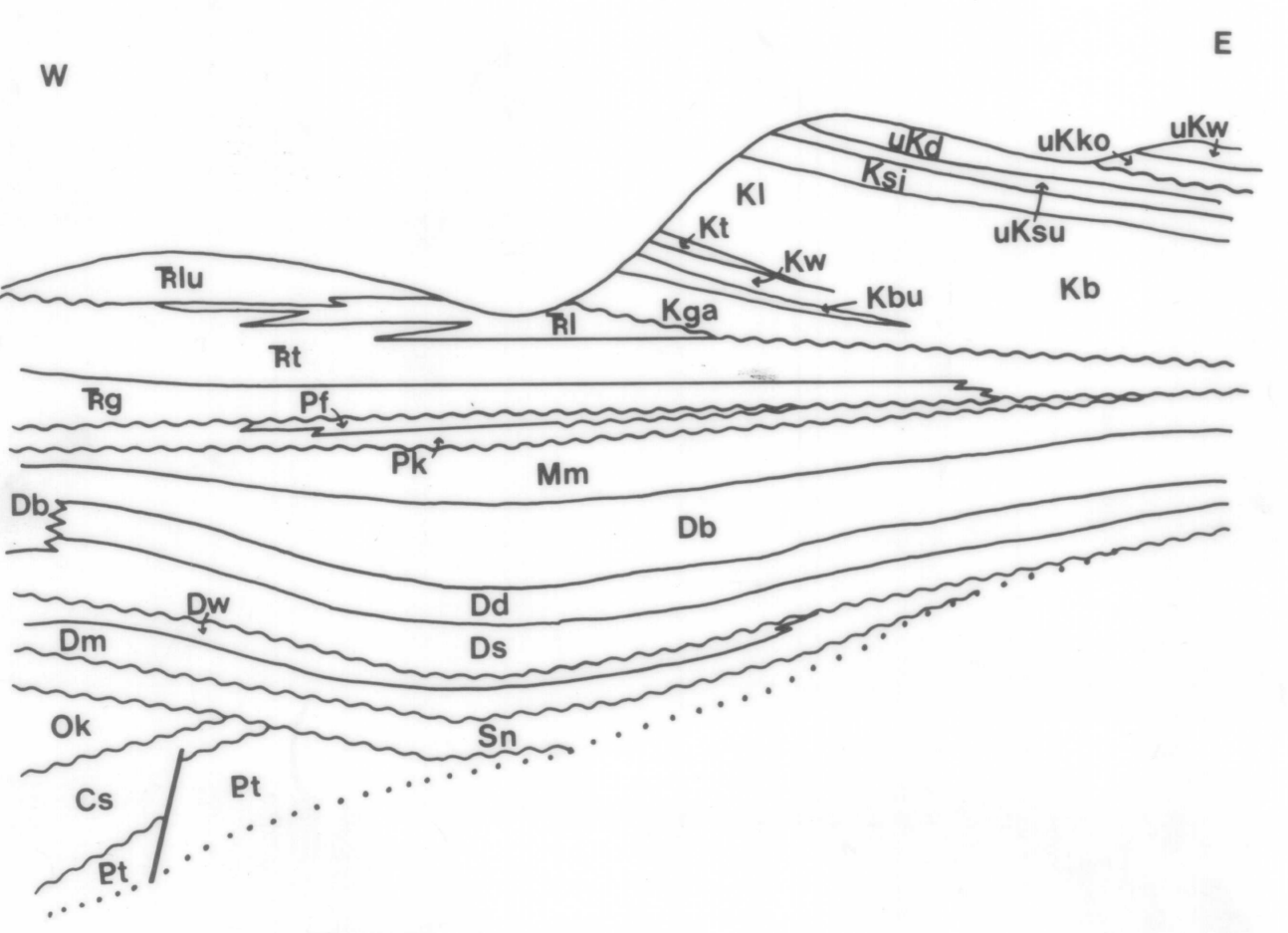
Geological boundary (approximate, assumed)
 Fault (with face into country)
 Anticline (approximate, assumed)
 Syncline (approximate, assumed)
 Well locations (abandoned, gas) * * * * *

Geology compiled by G.C. Taylor and D.F. Stott 1979
 Geology by: E.W. Bamber, R.T. Bell, B.S. Norford, D.F. Stott, and G.C. Taylor 1965-1966

OPEN FILE
DOSSIER PUBLIC
673
GEOLOGICAL SURVEY
COMMISSION GÉOLOGIQUE
OTTAWA



SCHEMATIC STRATIGRAPHIC RELATIONSHIPS TOAD RIVER (94N) MAP-AREA



RELIABILITY DIAGRAM - CROQUIS D'EXACTITUDE

Second edition map revised by the SURVEYS AND MAPPING BRANCH, DEPARTMENT OF ENERGY, MINES AND RESOURCES, field surveys 1966 and 1968, printed 1971.

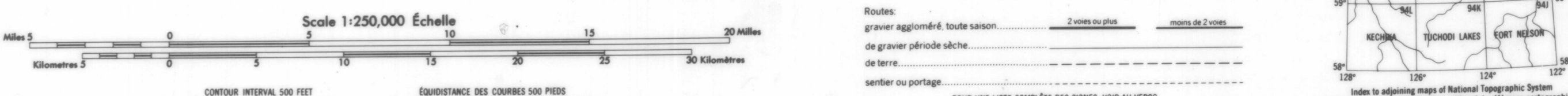
Magnetic declination 1970 varies from 30°31' westerly at centre of west edge to 30°27' westerly at centre of east edge. Mean annual change 5.6' westerly.

Roads: loose or stabilized surface, all weather: 2 lanes or more; less than 2 lanes; loose surface, dry weather; cart track; trail or portage.

FOR COMPLETE REFERENCE SEE REVERSE SIDE

A - Large scale mapping photogrammetric, 1968
 B - Large scale mapping updated from 1966 aerial photographs
 C - Contour and ground-surface photogrammetric, 1968
 D - Contour and ground-surface mapping a pair of aerial photographs taken prior to 1966.

TOAD RIVER
PEACE RIVER DISTRICT
BRITISH COLUMBIA

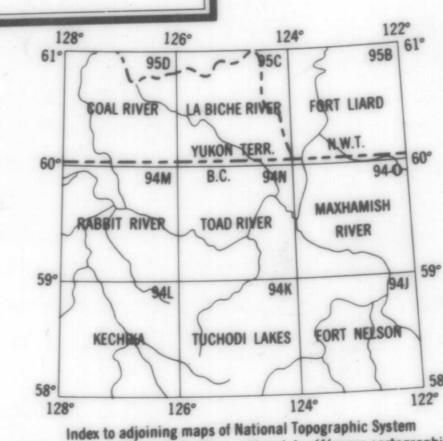


Données géométriques, par la DIRECTION DES LÈVES ET DE LA CARTOGRAPHIE, MINISTÈRE DE L'ÉNERGIE, DES MINES ET DES RESSOURCES. Lève sur le terrain en 1966 et 1968. Imprimé en 1971.

La déclinaison magnétique pour 1970 varie de 30°31' Est au centre de la bordure Ouest à 30°27' Est au centre de la bordure Est. Variation moyenne annuelle 5,6' Ouest.

Roads: gravel/aggrégé, toute saison; 2 lanes or more; moins de 2 lanes; gravel/gravelle, sèche; de terre; sentier ou portage.

POUR UNE LISTE COMPLÈTE DES SYMBOLES, VOIR AU VERSO



TOAD RIVER
94N
EDITION 3

O.F. 673

\$ 3.50