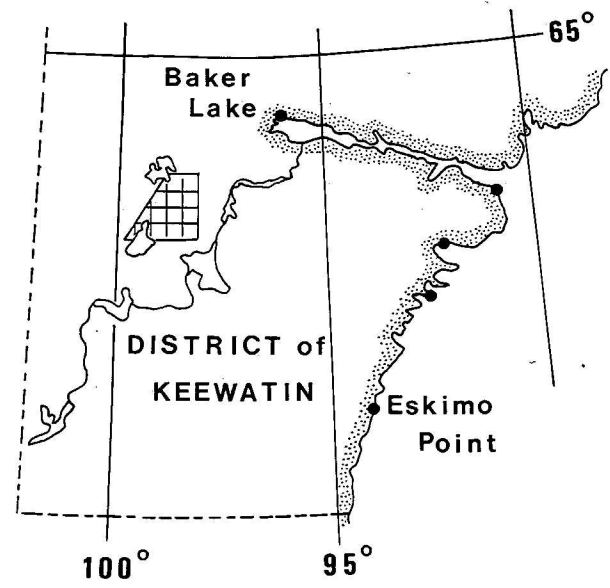




GEOLOGICAL SURVEY OF CANADA
DEPARTMENT OF ENERGY, MINES AND RESOURCES



HELIKIAN AND LATE APHEBIAN

- | | |
|---|---|
| DIABASE | GRANITE: MIROLITIC, FLUORITE-BEARING |
| McRAE LAKE DYKE | GRANITE AND QUARTZ SYENITE; PORPHYRITIC, SPHENE AND FLUORITE-BEARING |
| PORPHYRITIC LEUCOGABBRO | GRANITE: EQUIGRANULAR TO PORPHYRITIC |
| RAPAKIVI GRANITE | SYENITE: FINE-TO COARSE-GRAINED; INCLUDES FOLIATED HORNBLende SYENITE |
| PAMIUTUQ GRANITE: MAIN PHASE/PURPLE PORPHYRY/FINE-GRAINED, POTASSIC | |

DUBAWNT GROUP

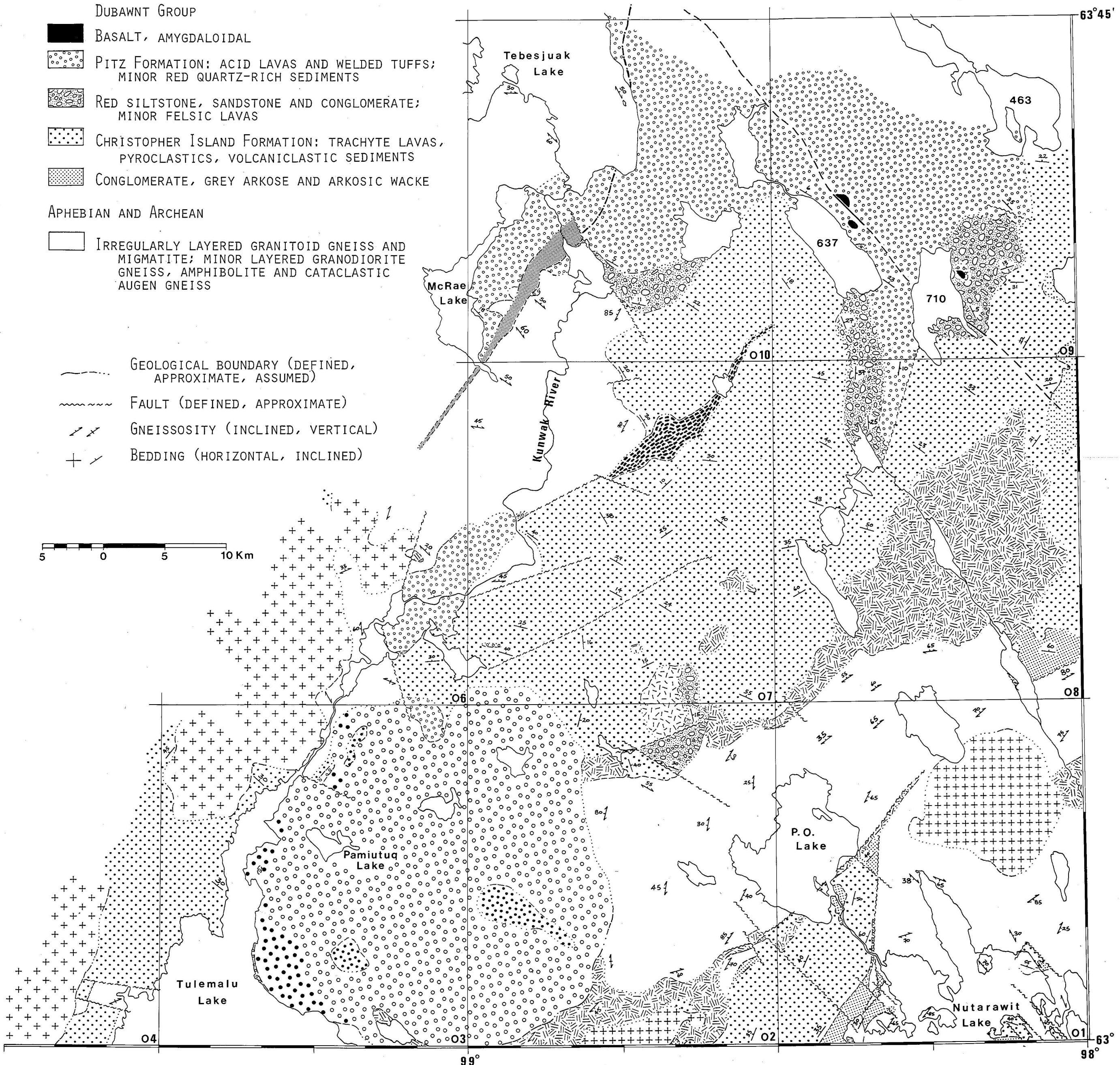
- | |
|--|
| BASALT, AMYGDALOIDAL |
| PITZ FORMATION: ACID LAVAS AND WELDED TUFFS; MINOR RED QUARTZ-RICH SEDIMENTS |
| RED SILTSTONE, SANDSTONE AND CONGLOMERATE; MINOR FELSIC LAVAS |
| CHRISTOPHER ISLAND FORMATION: TRACHYTE LAVAS, PYROCLASTICS, VOLCANICLASTIC SEDIMENTS |
| CONGLOMERATE, GREY ARKOSE AND ARKOSIC WACKE |

APHEBIAN AND ARCHEAN

- | |
|---|
| IRREGULARLY LAYERED GRANITOID GNEISS AND MIGMATITE; MINOR LAYERED GRANODIORITE GNEISS, AMPHIBOLITE AND CATACLASTIC AUGEN GNEISS |
|---|

- | |
|---|
| GEOLOGICAL BOUNDARY (DEFINED, APPROXIMATE, ASSUMED) |
| FAULT (DEFINED, APPROXIMATE) |
| GNEISSOSITY (INCLINED, VERTICAL) |
| BEDDING (HORIZONTAL, INCLINED) |

5 0 5 10 Km



GEOLOGY OF THE TEBESJUAK LAKE MAP AREA:
A PROGRESS REPORT WITH NOTES ON URANIUM AND BASE METAL MINERALIZATION

BY
ANN LECHÉMINANT, A.R. MILLER, G.W. BOOTH, M.J. MURRAY, G.A. JENNER

OPEN FILE
DOSSIER PUBLIC

663
1979
GEOLOGICAL SURVEY
COMMISSION GÉOLOGIQUE
OTTAWA

This map has been reprinted from a scanned version of the original map
Reproduction par numérisation d'une carte sur papier