

LEGEND

This legend is common to National Geochemical Reconnaissance  
Map 4-1976, Open File 408

- PRECAMBRIAN
- 9 Quartzite, siltstone, shale with minor carbonate rocks and iron formation.
  - 8 Massive to layered volcanic rocks, with minor sedimentary rocks.
  - 7 Grey to pink granite, in part gneissic.
  - 6 Porphyritic granite, quartz, diorite and granodiorite.
  - 5 Mixed granite and metasedimentary gneiss, migmatite, minor plagioclase amphibolite.
  - 4 Massive to pillowed basalt, dacite and derived metamorphic rocks.
  - 3 Metasedimentary gneiss, biotite-quartz-feldspar-gneiss.
  - 2 Metasedimentary schist and gneiss, quartzite.
  - 1 Brown hypersthene-bearing granulite, minor pyroxene granulite and porphyroblastic granulite.
  - A Hornblende schist, amphibolite, metagabbro, magnetite gneiss.

- ..... Drift covered area
- ..... Geological contact
- ..... Limit of geological mapping
- ..... Esker
- ..... Washboard moraine (individual ridges not indicated)

Legend modified and geology compiled for geochemical map by E.H. Hornbrook and R.G. Garrett from map 17-1965 by W.L. Davison and W.W. Heywood, and map 14-1967 by W.L. Davison.

Geological cartography by the Geological Survey of Canada

Base-maps assembled by the Geological Cartography Unit from maps published at the same scale by the Mapping and Charting Establishment, M.C.E. in 1966, and by Surveys and Mapping Branch, 1963.

Mean magnetic declination 1977, 8°20.4' East decreasing 3.4' annually.  
Readings vary from 5°47.4' in the SE corner to 10°58.8' in the NW corner in the map-area

Elevation in feet above mean sea-level.

Geological Survey of Canada, Ottawa

Geochemistry and Federal-Provincial coordination by E.H.W. Hornbrook  
Analytical chemistry by J.J. Lynch  
Data monitoring by R.G. Garrett, N.G. Lund and D. Ellwood

Manitoba, Mineral Resources Division

Federal-Provincial coordination by J.F. Stephenson

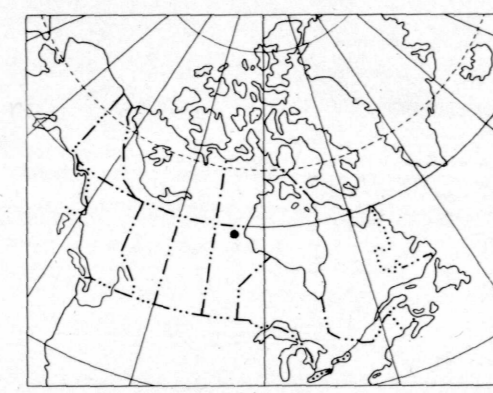
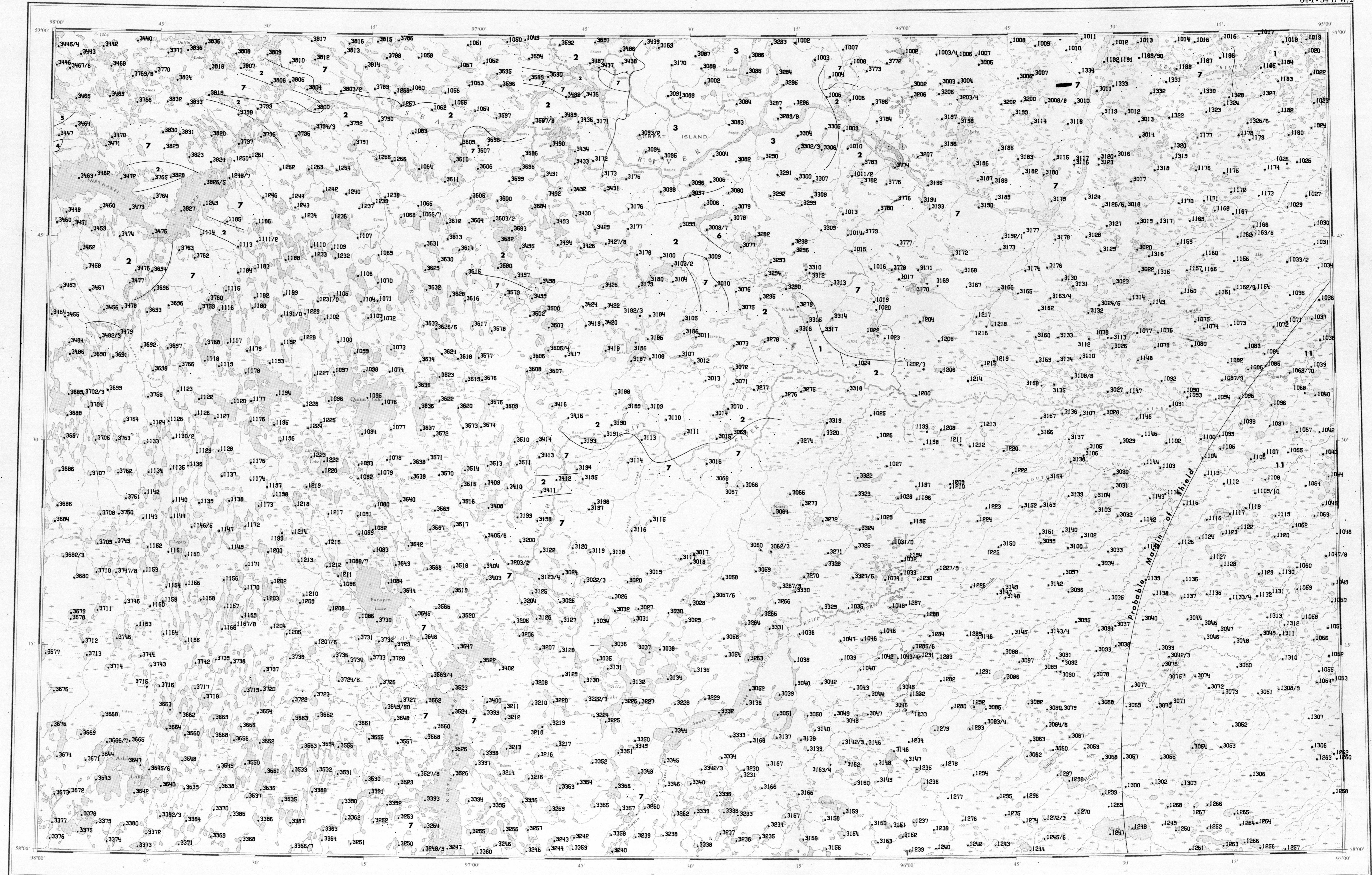
Contractors

Sample collection by Trigg, Woollett & Associates Ltd.

This map forms a series of 28 sheets released under Geological Survey of Canada, Open Files 407-408.  
The open files consist of data for 12 elements each, per cent loss on ignition and sample site location.

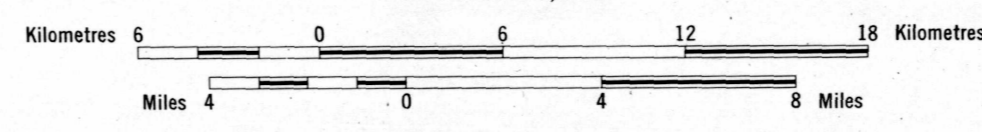
The data are also available in digital form. For further information please contact:

The Director,  
Computer Science Centre,  
Department of Energy, Mines and Resources,  
Ottawa, Ontario K1A 0E8



NATIONAL GEOCHEMICAL RECONNAISSANCE Map 3-1976  
SAMPLE LOCATIONS  
CANADA-MANITOBA SUBSIDIARY AGREEMENT ON MINERAL EXPLORATION AND DEVELOPMENT

Scale 1:250,000



Universal Transverse Mercator Projection  
© Crown Copyrights reserved

NATIONAL GEOCHEMICAL RECONNAISSANCE MAP 3-1976  
OPEN FILE 407  
EASTERN MANITOBA,  
SAMPLE LOCATIONS

This map has been reprinted from a scanned version of the original map. Reproduction par numérisation d'une carte sur papier.

