

- LEGEND**
- This legend is common to National Geochemical Reconnaissance Map 4-1976, Open File 408
- PRECAMBRIAN**
- 9 Quartzite, siltstone, shale with minor carbonate rocks and iron formation
 - 8 Massive to layered volcanic rocks, with minor sedimentary rocks
 - 7 Grey to pink granite, in part gneissic.
 - 6 Porphyritic granite, quartz, diorite and granodiorite
 - 5 Mixed granite and metasedimentary gneiss, migmatite, minor plagioclase amphibolite
 - 4 Massive to pillowed basalt, dacite and derived metamorphic rocks
 - 3 Metasedimentary gneiss, biotite-quartz-feldspar-gneiss
 - 2 Metasedimentary schist and gneiss, quartzite
 - 1 Brown hypersthene-bearing granulite, minor pyroxene granulite and porphyroblastic granulite
 - A Hornblende schist, amphibolite, metagabbro, magnetite gneiss
- Drift covered area.....
 Geological contact.....
 Limit of geological mapping.....
 Esker.....
 Washboard moraine (individual ridges not indicated).....

Legend modified and geology compiled for geochemical map by E.H. Hornbrook and R.G. Garrett from map 17-1965 by W.L. Davison and W.W. Heywood, and map 14-1967 by W.L. Davison

Geological cartography by the Geological Survey of Canada

Base-maps assembled by the Geological Cartography Unit from maps published at the same scale by the Mapping and Charting Establishment, M.C.E. in 1966, and by Surveys and Mapping Branch, 1963.

Mean magnetic declination 1977, 8°00.4' East decreasing 3.4' annually. Readings vary from 5°47.4' in the SE corner to 10°58.8' in the NW corner in the map-area

Elevation in feet above mean sea-level

Geochemical Symbol and Data Presentation

The concentration of an element at a sample site is graphically represented as one of 15 symbols, if a sample was collected but there is no data available a dot is plotted. The symbols are symmetrically arranged so that they first increase in size to the eighth symbol and then increase in blackness to the fifteenth. The two small crosses at the low end of the scale are used to respectively denote concentrations below the analytical detection limit, or, in the data group containing the detection limit. The data are grouped on a semi-logarithmic scale, i.e. 1,2,5,10,20,50,100 etc. Five decades can be spanned and this arbitrary division has been chosen for the continuing Canada wide series of maps constituting the National Geochemical Reconnaissance. The choice of symbols and the data groups they represent for any specific element is based on the histogram and cumulative frequency plot for the total survey data from one, or more contiguous, open file sheets covered in one field season. The eighth symbol is used for the model group as defined by the histogram, this group usually includes the median of the data as defined by the 0.5 (50%) point on the cumulative frequency plot. Some, or all, of the remaining 14 symbols are chosen so as to achieve an appropriate graphical impact. An example of all 15 symbols is given below.

The symbol maps, being based on the total survey data distributions, are unaffected by the availability of ever increasing levels of knowledge in bedrock and surficial geology, and other environmental factors. Therefore, the raw data symbol maps are only intended to assist the rapid inspection of the data for gross regional features. To fulfill the needs of a more specific and thorough interpretation, the raw symbol maps should be modified using the field and analytical data provided in the data listings and any other knowledge available. To assist in the appraisal and modification of the data in terms of the symbol map bedrock geology, a table of summary statistics and proposed threshold values for each mapped bedrock unit, or broad lithologic unit, again based on the total survey data, is presented below the histogram. This table can be used alone, or in conjunction, with the sample location map and data listings to indicate above threshold samples where they occur on the map. In many instances, the table will also illustrate, more clearly than the map, the dependence of mean geochemical levels on bedrock type. It may often be also observed that whilst the total data appears to approximate a log-normal distribution the data for individual geological units appears to approximate a normal distribution. The proposed thresholds presented are believed to be useful in interpreting the data from a mineral exploration viewpoint. Locations of samples with concentrations in excess of the threshold for the rock unit they appear to be derived from, should be studied carefully. The above threshold concentration can be due to a wide range of geological and environmental factors, but one of these could be the presence of abnormal concentrations of the element in a form of interest to the mineral exploratist.

To comprehensively study an area, all available geological, environmental and recorded data should be utilized. The data separation by bedrock type can often be improved by constructing new data subsets and deriving local threshold levels based on the most detailed and up-to-date knowledge available.

The term reliability factor and value that appears below the table is an estimate of the reliability of the geochemical map. On the basis of duplicate sampling 5% of all lakes sampled it can be stated that there is a 95% chance that if any lake is resampled and identical methods of sample preparation and analysis are used the new value will lie between $X \cdot RF$ and X / RF where X is the original value obtained. This factor takes into account variability due to both heterogeneity of the centre-lake bottom sediments and sample preparation and analytical causes.

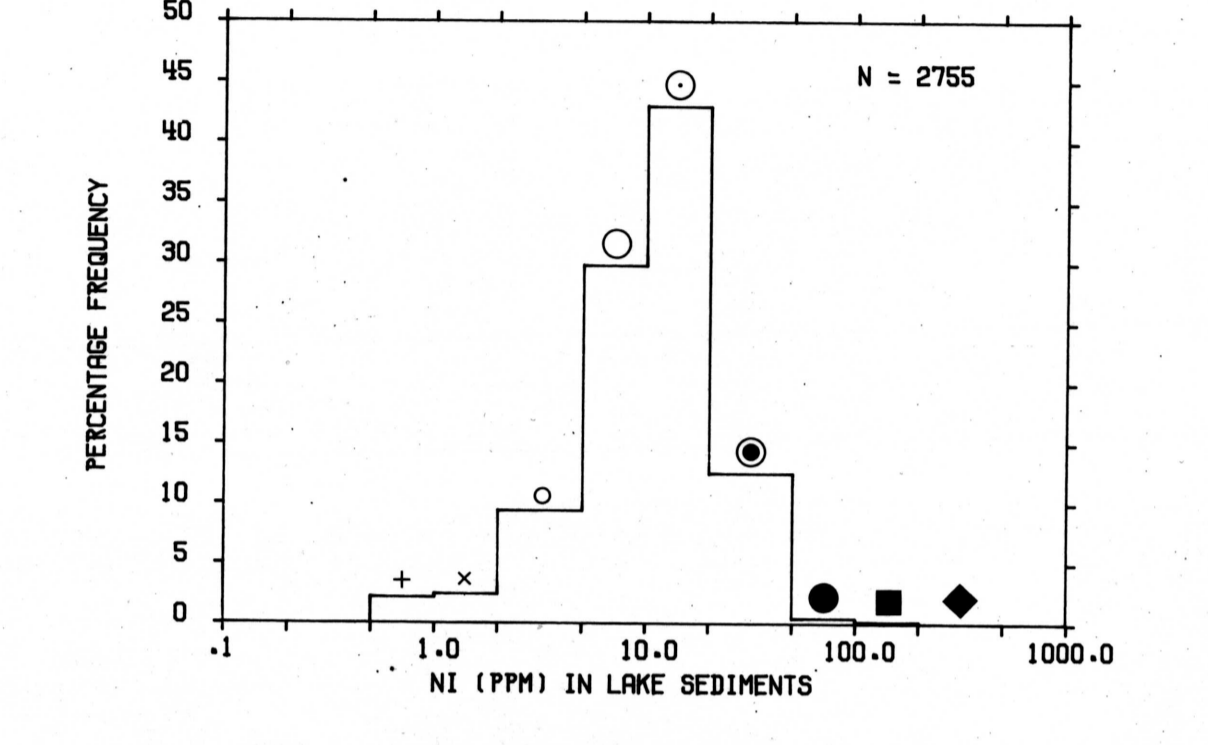
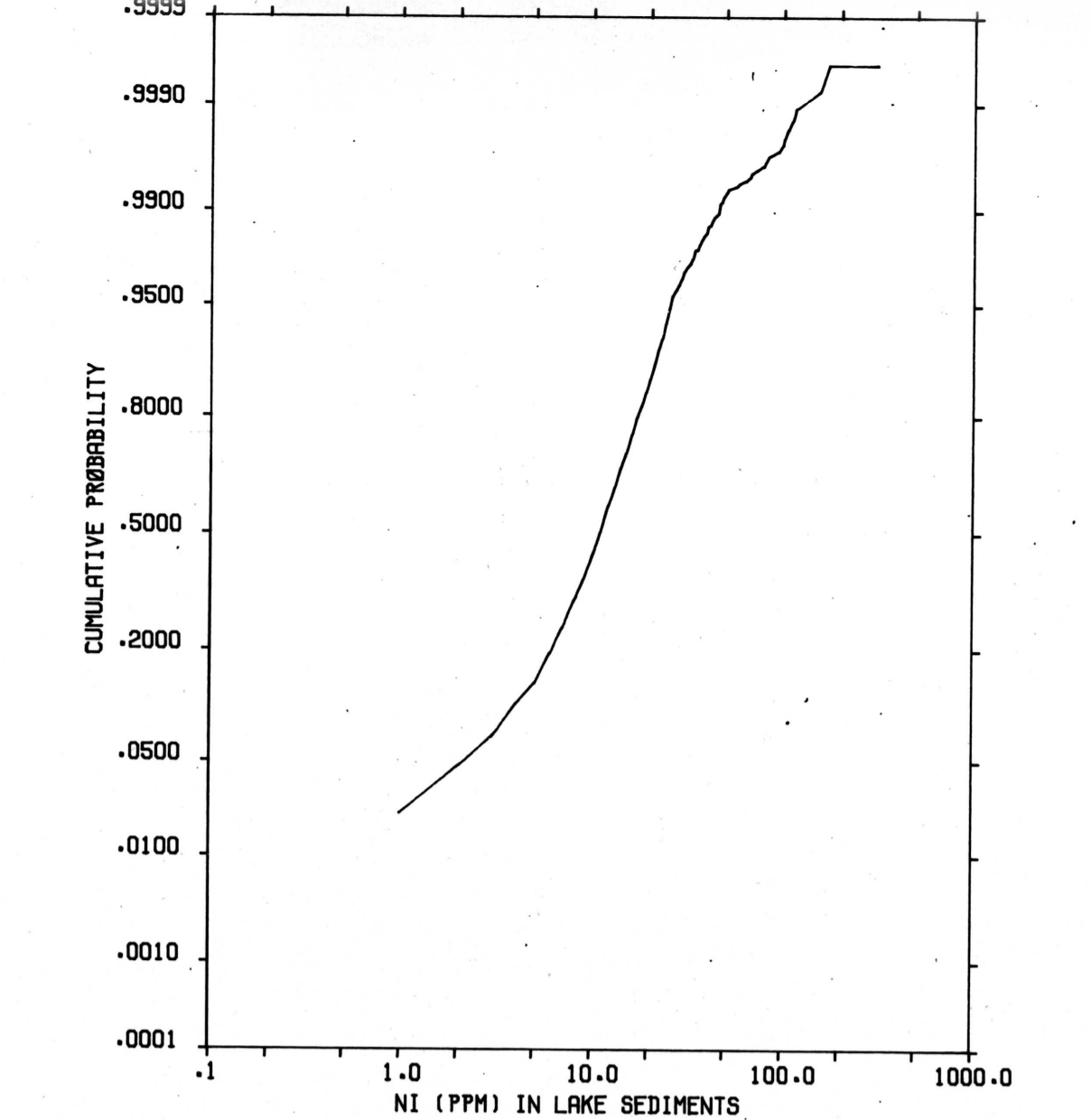
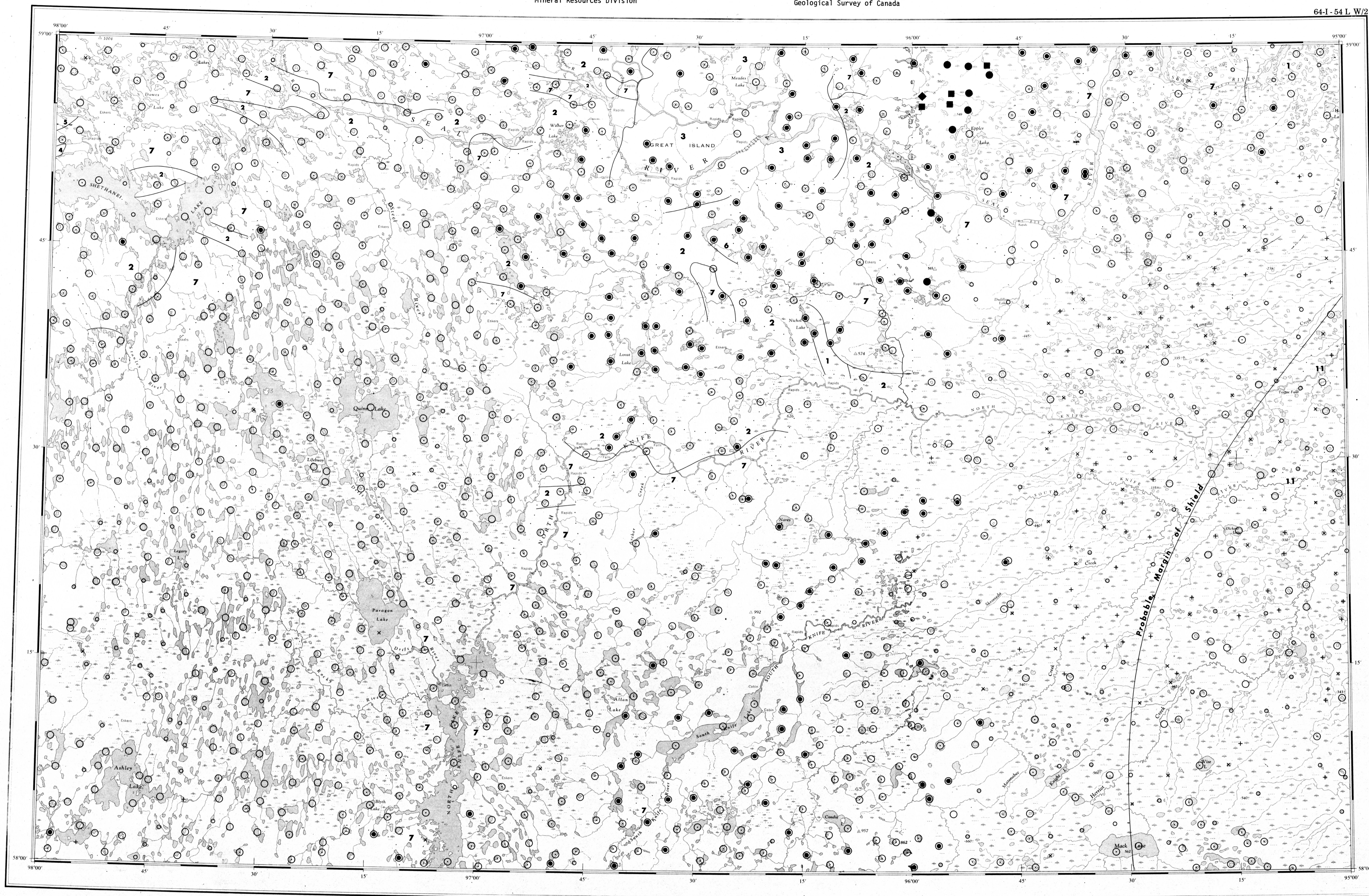
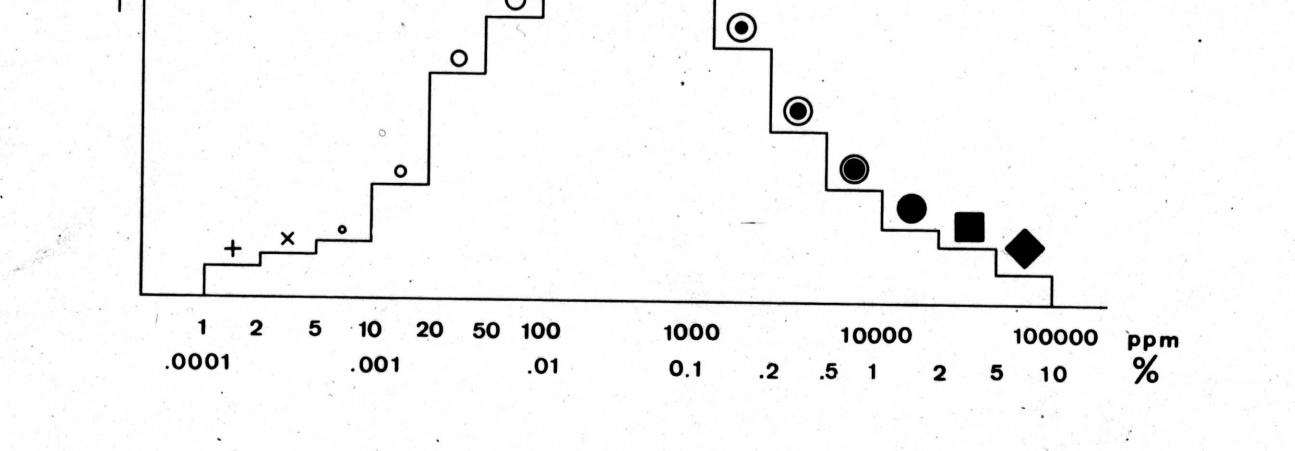
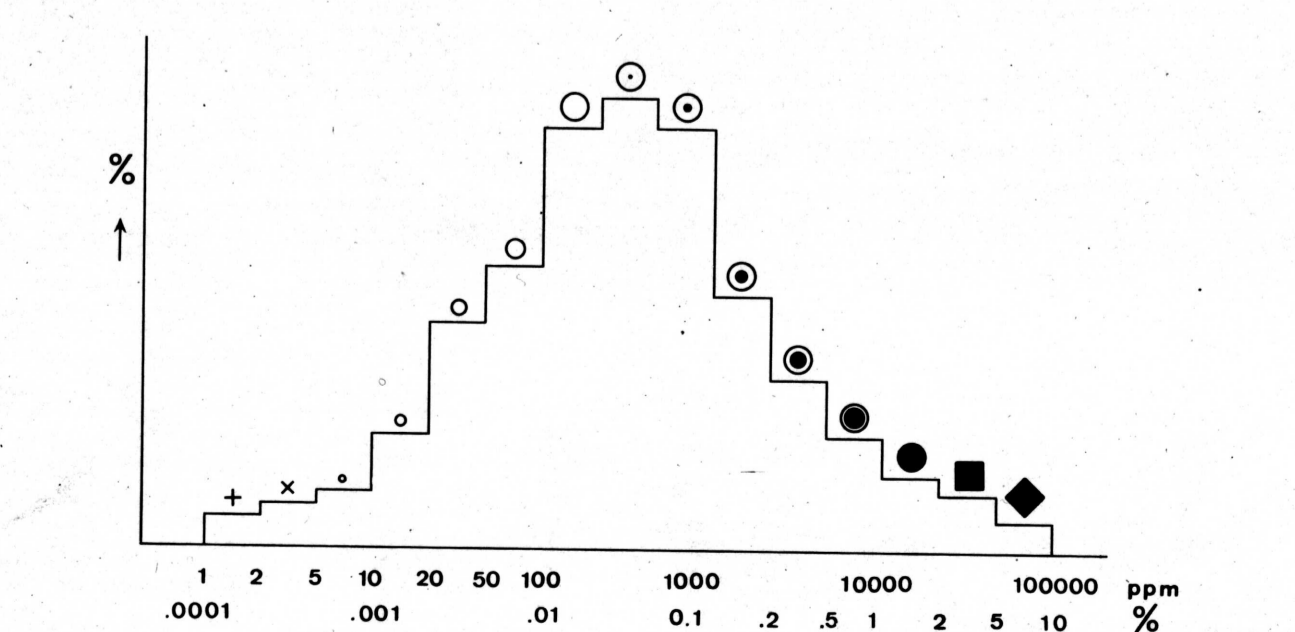


Table of Thresholds for Major Geological Units

Unit	No. of Samples	Mean	S.D.	C.V. %	Threshold
11	30	13.7	9.2	67	45
7	547	13.2	7.3	56	50
6	1	23.0	-	-	50
5	0	-	-	-	50
4	147	10.9	5.4	50	45
3	35	18.9	5.9	31	45
2	75	15.2	7.4	49	45
1	13	15.9	8.8	55	45
Unknown	1164	12.1	14.8	122	50

Data Units are ppm Reliability Factor = 1.44

NATIONAL GEOCHEMICAL RECONNAISSANCE MAP 3-1976
 OPEN FILE 407

Resource Geophysics and Geochemistry Division
 Geological Survey of Canada, Ottawa

Geochemistry and Federal-Provincial coordination by E.H.W. Hornbrook
 Analytical chemistry by J.J. Lynch
 Data monitoring by R.G. Garrett, N.G. Lund and D. Ellwood

Manitoba, Mineral Resources Division
 Federal-Provincial coordination by J.F. Stephenson

Contractors
 Sample collection by Trigg, Woollett & Associates Ltd.
 Sample preparation by Golder Associates
 Chemical analyses by Chemex Labs Ltd.

This map forms a series of 28 sheets released under Geological Survey of Canada, Open Files 407-408. The open files consist of data for 12 elements each, per cent loss on ignition and sample site location

This map has been reprinted from a scanned version of the original map
 Reproduction par numérisation d'une carte sur papier

The data are also available in digital form. For further information please contact:

The Director,
 Computer Science Centre,
 Department of Energy, Mines and Resources,
 Ottawa, Ontario K1A 0E8

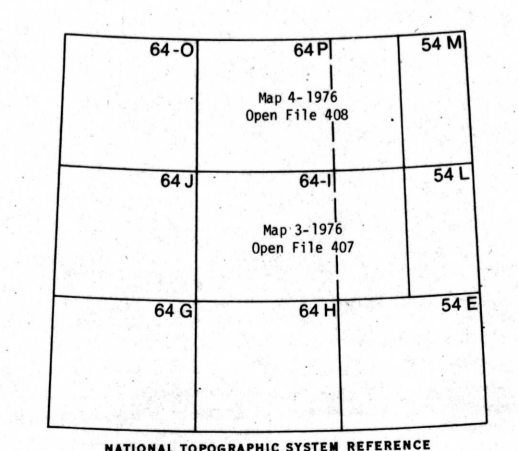
NATIONAL GEOCHEMICAL RECONNAISSANCE Map 3-1976
 NICKEL IN LAKE SEDIMENTS

CANADA-MANITOBA SUBSIDIARY AGREEMENT ON MINERAL EXPLORATION AND DEVELOPMENT

Scale 1:250,000

Kilometres 0 6 12 18 Kilometres
 Miles 0 4 8 Miles

Universal Transverse Mercator Projection
 © Crown Copyrights reserved



NATIONAL GEOCHEMICAL RECONNAISSANCE MAP 3-1976
 OPEN FILE 407
 NORTHEASTERN MANITOBA, 1976
 NICKEL