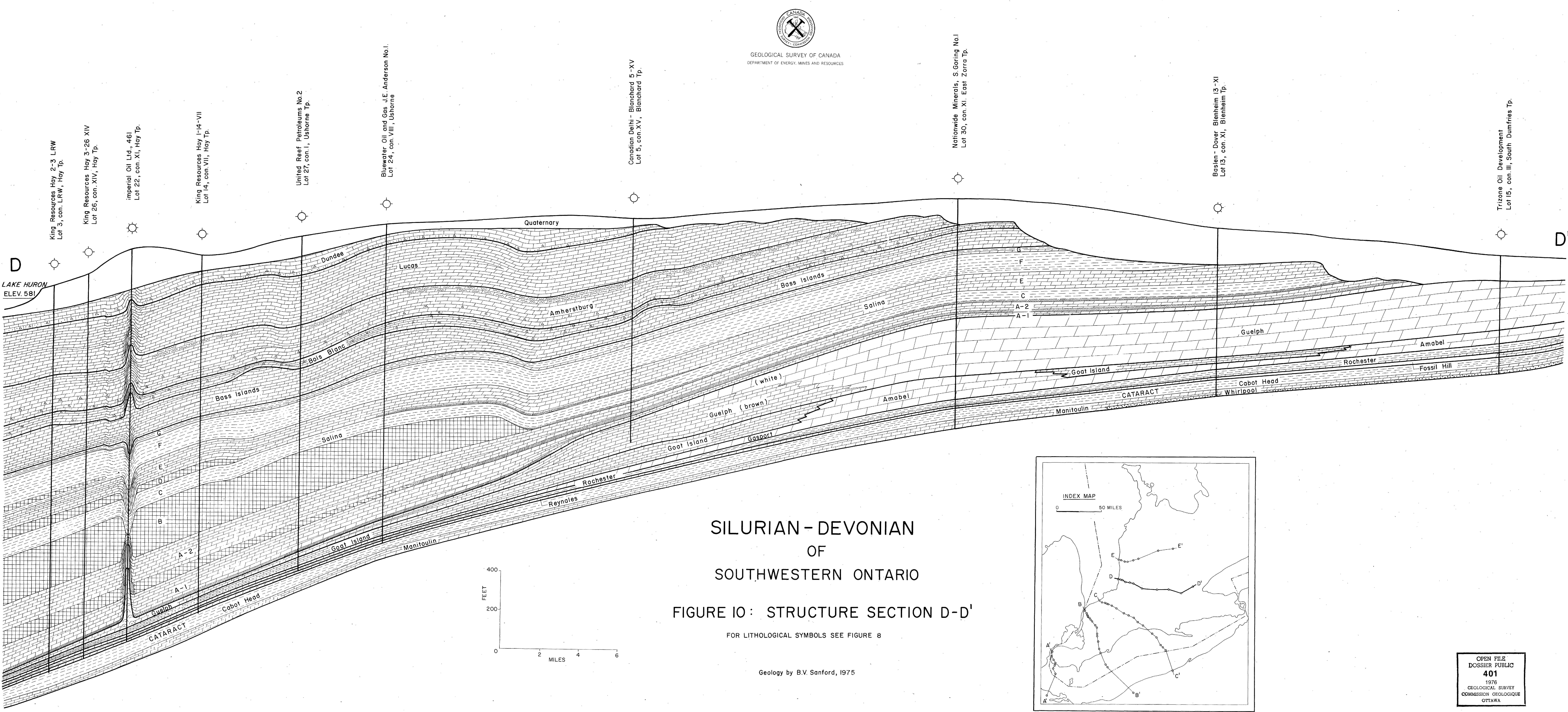




GEOLOGICAL SURVEY OF CANADA
DEPARTMENT OF ENERGY, MINES AND RESOURCES



King Resources Hay 2-3 LRW
Lot 3, con. LRW, Hay Tp.

King Resources Hay 3-26 XIV
Lot 26, con. XIV, Hay Tp.

Imperial Oil Ltd., 461
Lot 22, con. XI, Hay Tp.

King Resources Hay 1-14-VII
Lot 14, con. VII, Hay Tp.

United Reef Petroleum No.2
Lot 27, con. I, Ushorne Tp.

Bluewater Oil and Gas J.E. Anderson No.1
Lot 24, con. VIII, Ushorne

Canadian Delmi - Blanchard 5-XV
Lot 5, con. XV, Blanchard Tp.

Nationwide Minerals, S.Goring No.1
Lot 30, con. XI, East Zorra Tp.

Baslen - Dover Blenheim 13-XI
Lot 13, con. XI, Blenheim Tp.

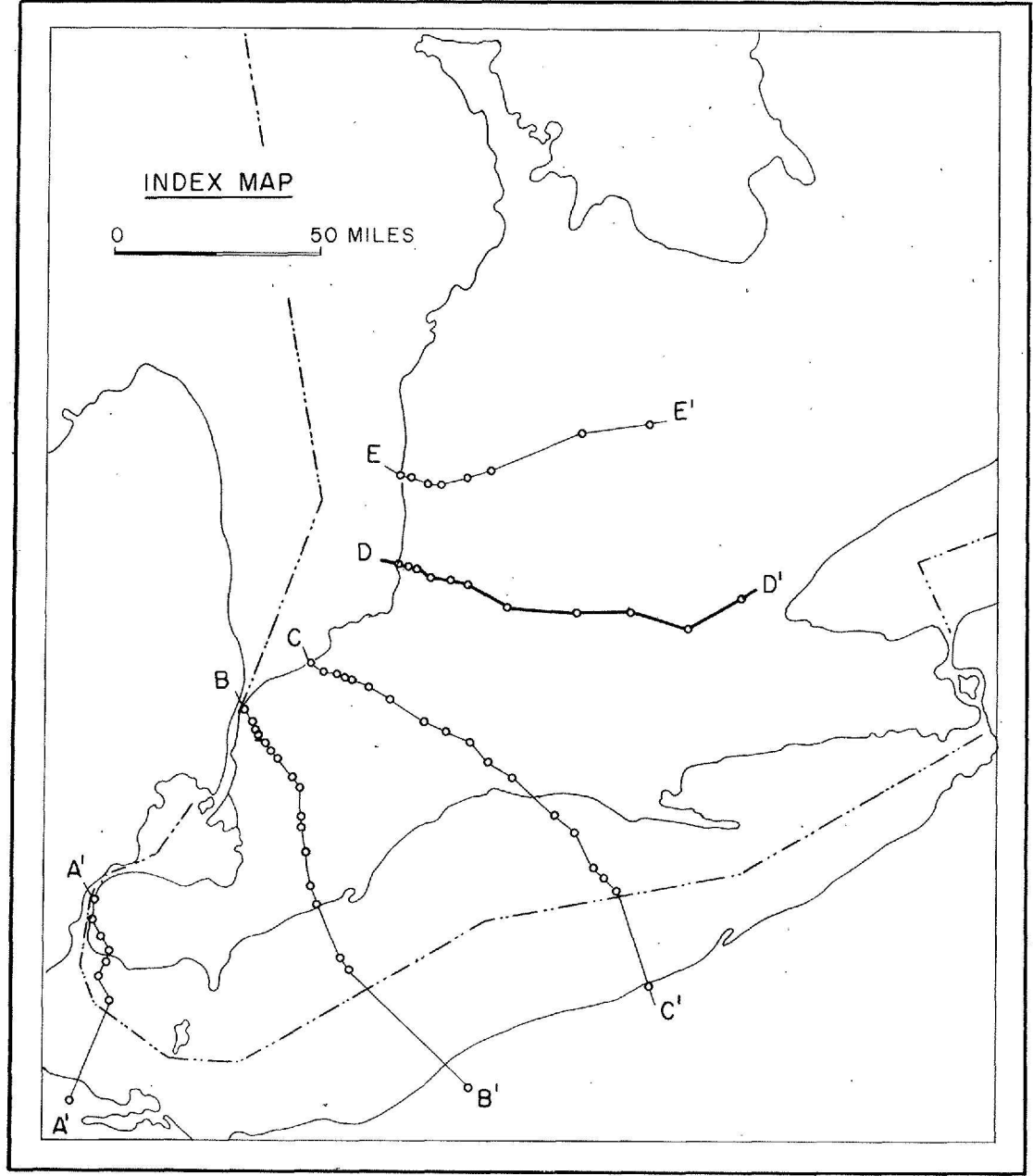
Trizone Oil Development
Lot 15, con. III, South Dumfries Tp.

SILURIAN - DEVONIAN OF SOUTHWESTERN ONTARIO

FIGURE 10: STRUCTURE SECTION D-D'

FOR LITHOLOGICAL SYMBOLS SEE FIGURE 8

Geology by B.V. Sanford, 1975



OPEN FILE
DOSSIER PUBLIC
401
1976
GEOLOGICAL SURVEY
COMMISSION GEOLOGIQUE
OTTAWA