



GEOLOGICAL SURVEY OF CANADA
DEPARTMENT OF ENERGY, MINES AND RESOURCES

Canadian Rock Salt Co. Mine Shaft and D.D. No. 1
Ojibway, Sandwich South Tp.

Allied Chemical N-4
lot 31, con. I., Anderdon Tp.

Imperial Oil Ltd., 832
lot 42, con. IV., Malden Tp.

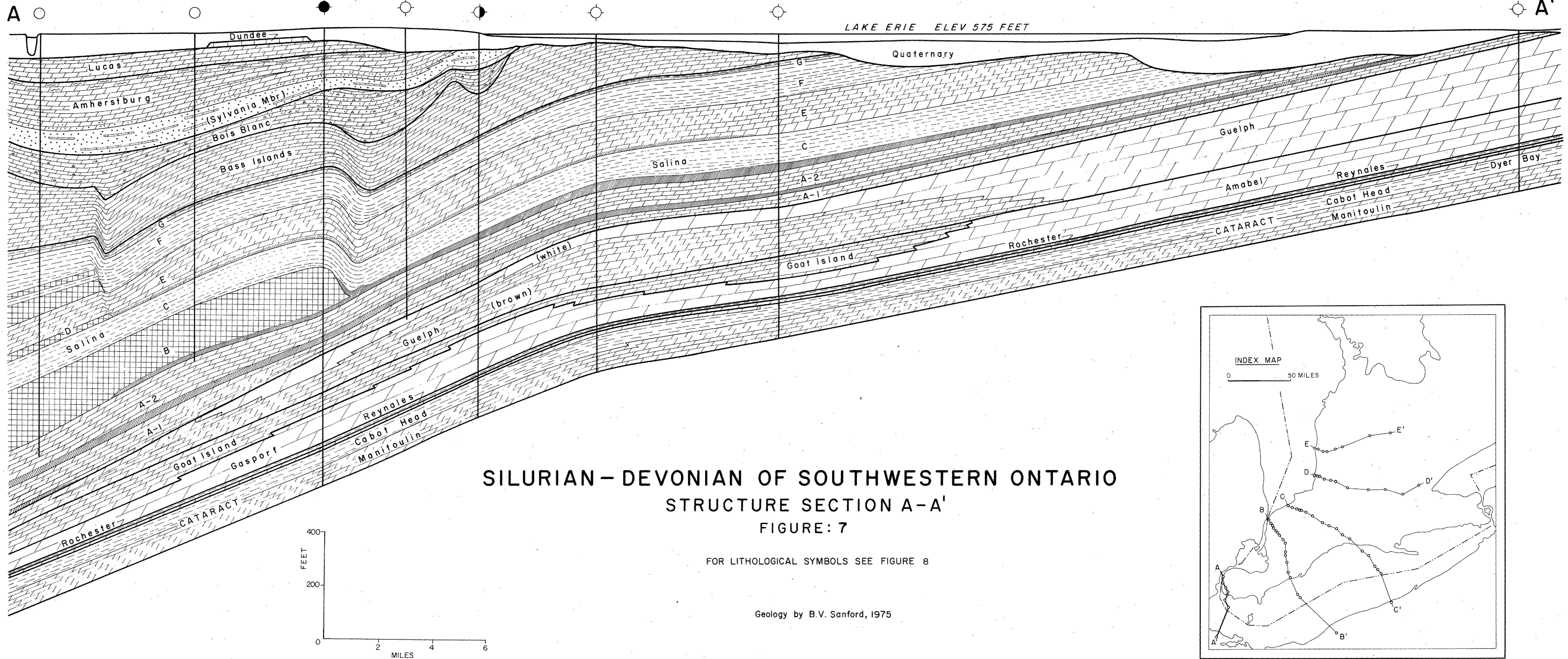
Drake and Walker-J. Park No. 1
lot 83, con. VIII., Malden Tp.

C.B. Lewis No. 23
lot 59, con. Front., Malden Tp.

French Petroleum - Asamera Rivermouth No. 1
41° 58' 13.5" N; 83° 03' 10" W Lake Erie

Amerada Hess - Essex No. 2
41° 53' 09" N; 82° 59' 30" W Lake Erie

Well in Benton Tp.
Ottawa Co., Ohio



SILURIAN - DEVONIAN OF SOUTHWESTERN ONTARIO
STRUCTURE SECTION A-A'
FIGURE: 7

FOR LITHOLOGICAL SYMBOLS SEE FIGURE 8

Geology by B.V. Sanford, 1975

