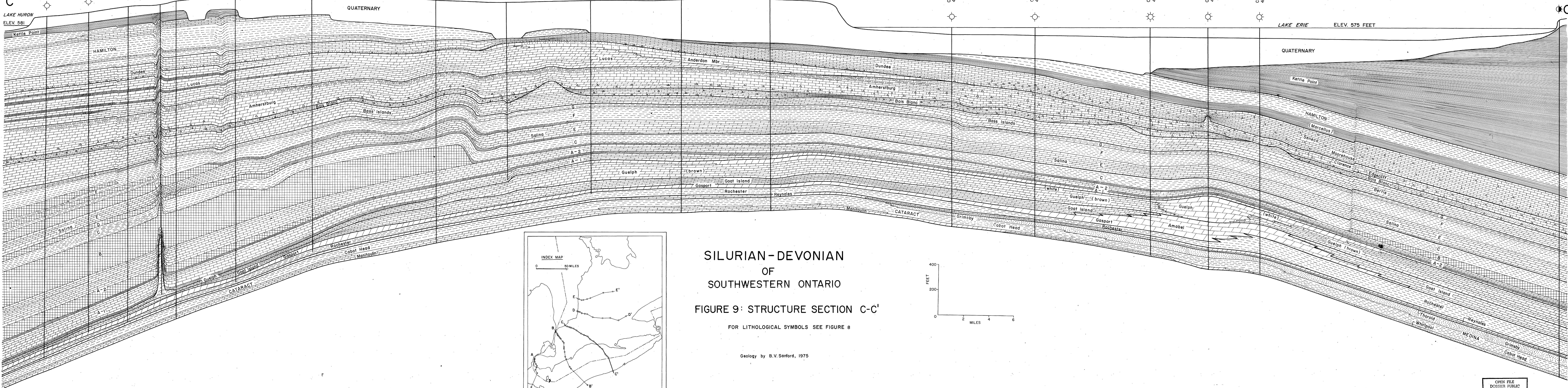


C
LAKE HURON
ELEV. 581

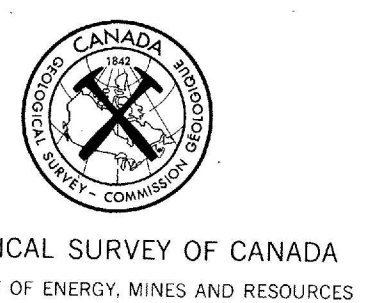


SILURIAN-DEVONIAN
OF
SOUTHWESTERN ONTARIO

FIGURE 9: STRUCTURE SECTION C-C'

FOR LITHOLOGICAL SYMBOLS SEE FIGURE 8

Geology by B.V. Sanford, 1975



GEOLOGICAL SURVEY OF CANADA
DEPARTMENT OF ENERGY, MINES AND RESOURCES

- Imperial Oil Ltd. 514
Lot 16, con. XIII Plympton Tp.
- British American - McCall No. 1
Lot 24, con. XII Plympton Tp.
- King Resources - Warwick 1-3-VN
Lot 5, con. VN Warwick Tp.
- Imperial Oil Ltd. 401
Lot 10, con. IVN Warwick Tp.
- British American - Warwick 13-IVN
Lot 13, con. IV Warwick Tp.
- King Resources - Warwick 2-24-1N
Lot 24, con. 1N Warwick Tp.
- Imperial Oil Ltd. 432
Lot 8, con. IIS, Adelaide Tp.
- Union Gas Co. of Canada, Ltd. Ekfrid No. 2
Lot 10, con. VI Caradoc Tp.
- Caradoc Oil Synd. - G. C. Dubs No. 1
Lot 16, con. I NLS, Caradoc Tp.
- Union Gas Co. of Canada, Ltd. Delaware No. 3
Lot 20, con. II Delaware Tp.
- Testic - Sumit - L. Begg No. 1
Lot 39, con. NTR Southwood Tp.
- Beslen - Yarmouth 14-V
Lot 14, con. V - Yarmouth Tp.
- Consumers - Amoco 13093
42°34'59.9" N; 80°55'15.7" W Lake Erie
- Consumers - Amoco 13091
42°31'40" N; 80°49'0" W Lake Erie
- Consumers 13212
42°24'50" N; 80°44'16" W Lake Erie
- Consumers - Amoco 13065
42°21'49" N; 80°40'54" W Lake Erie
- Consumers - Pan American 13001
42°19'30" N; 80°37'30" W Lake Erie

Ohio Oil Co. - Jay Childs No. 1
Erie Co. Pennsylvania