

GEOLOGICAL SURVEY OF CANADA
LIBRARY 6th FLOOR
100 WEST PENDER ST.
VANCOUVER, B.C.
V6B 1R8

This document was produced
by scanning the original publication.

Ce document est le produit d'une
numérisation par balayage
de la publication originale.

VERTICAL SCALE

All profiles were recorded on an EPC graphic recorder using a 4 or 8 second sweep rate. The horizontal scale lines are 100 milliseconds apart.

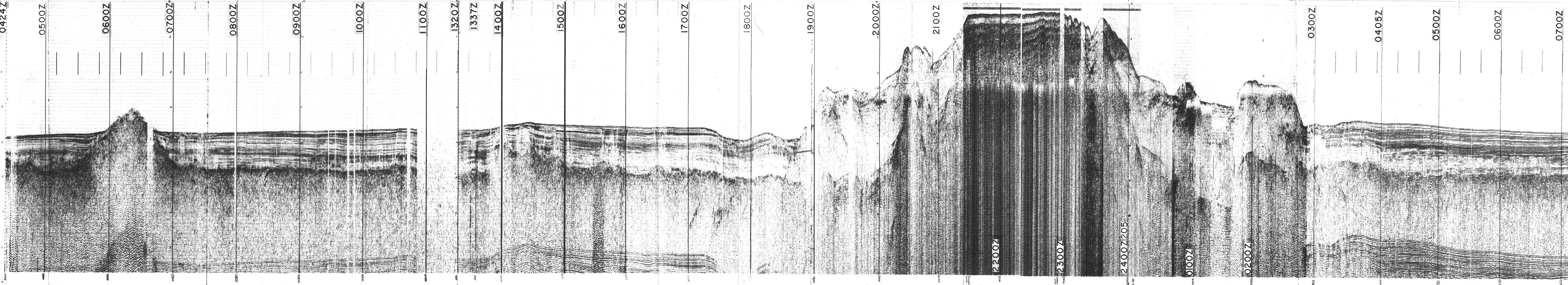
HORIZONTAL SCALE

Vertical bars correspond to one-half or one hour intervals. Since ship's speed varied, the distance is also a variable but may be determined from the accompanying track plots.

LINE 3 195

1934 2/195	Stopper	END	LINE 3
8 sec	swamp		

LINE 69-050-3



BI 69 050 HUDSON

LINE 5 208 8 SEC SWEEP

BI 69 050 HUDSON

1100Z

1200Z

1300Z

1400Z

1500Z

1600Z

1700Z

1800Z

1900Z

2000Z

2100Z

2200Z

2300Z

2092400Z

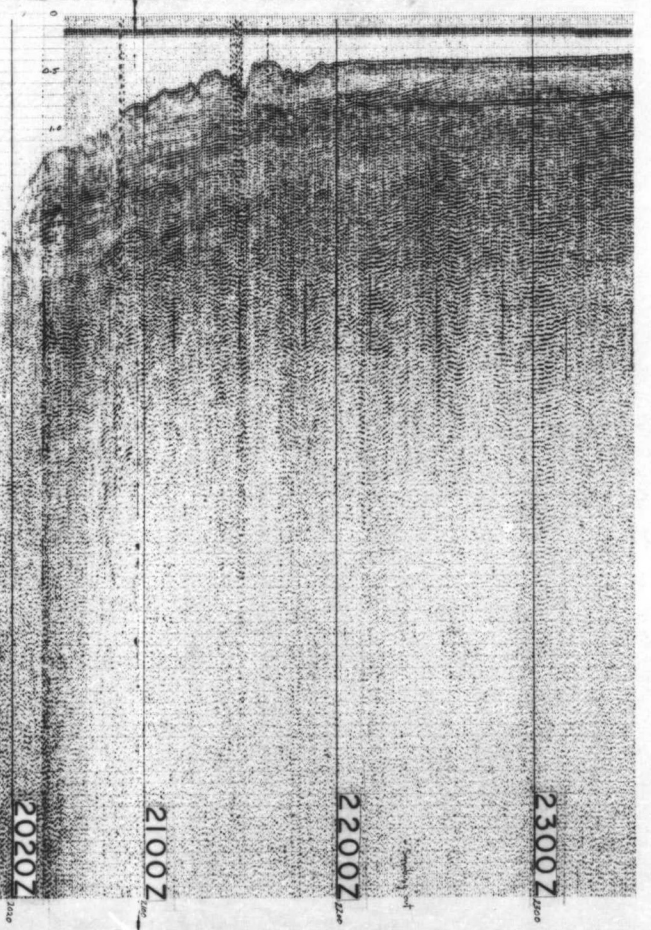
0100Z

0128Z

BI 69 050 HUDSON

LINE 69-050-5

5 208 17 49 00.9



1900Z

2000Z

1800Z

1700Z

1600Z

1500Z

1400Z

1300Z

1200Z

1100Z

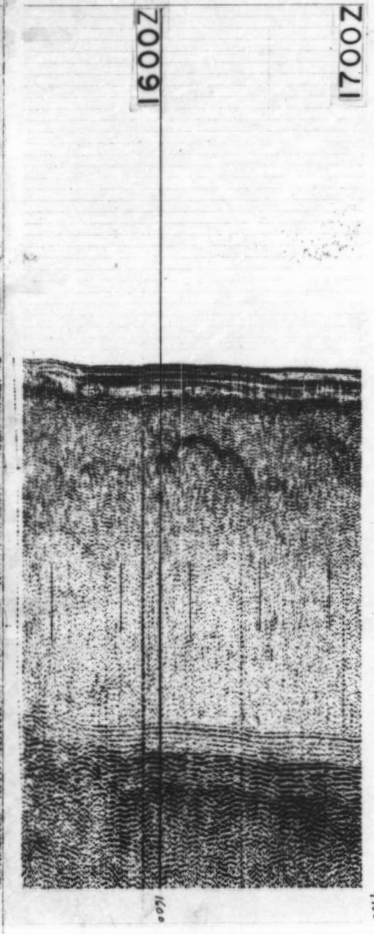
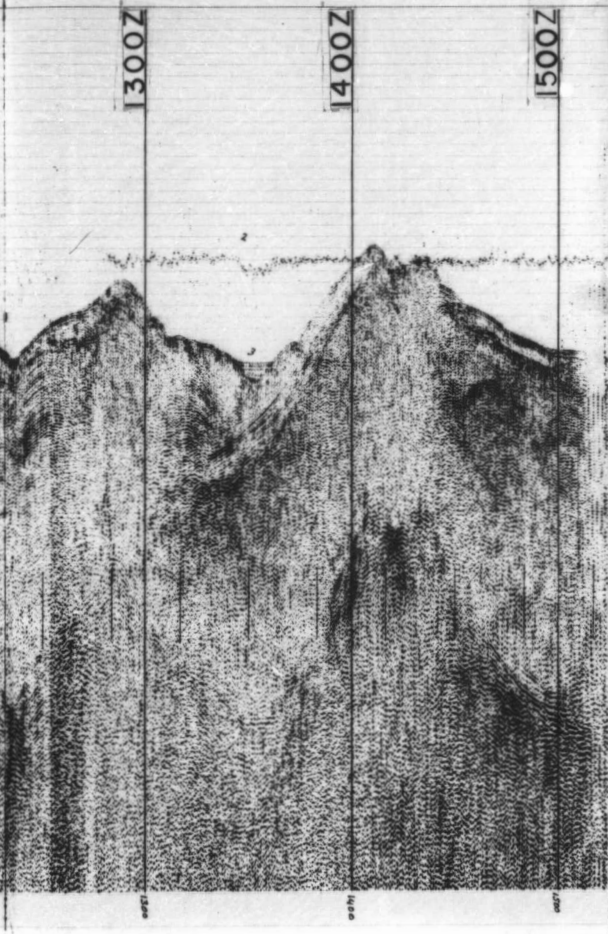
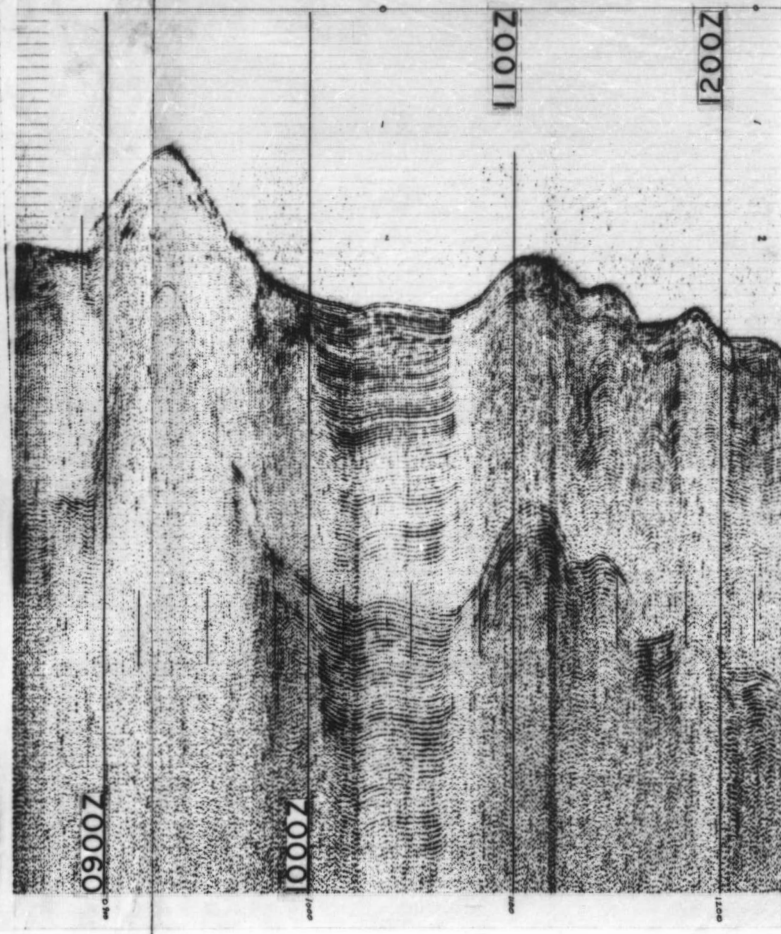
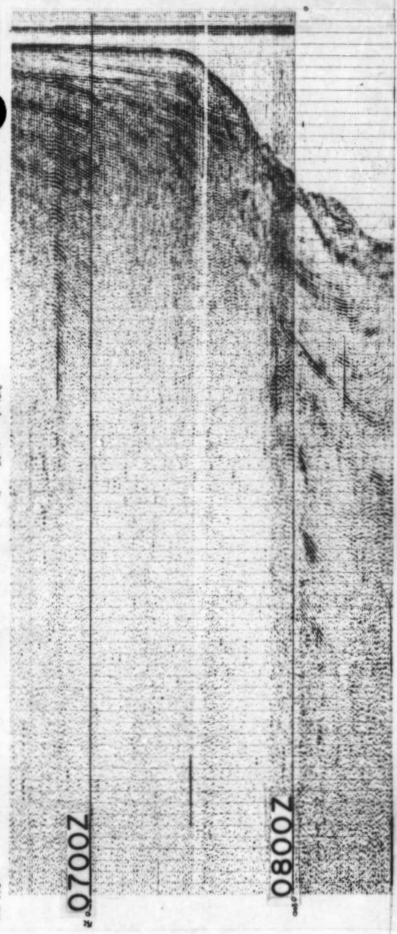
1000Z

0900Z

0815Z

LINE 7210
8 SEC SWEEP

BI 69 HUDSON



BI 69 050 HUDSON

END LINE 7

LINE-8

8 SEC SWEEP

216

BI 69 050 HUDSON

2121Z

2202Z

2300Z

2172400Z

0100Z

0200Z

0300Z

0400Z

01000 End of Line 8

BI 69 050 HUDSON

LINE 69-050-8

PZ 71-15-40

PZ 71-15-40

PZ 71-15-40

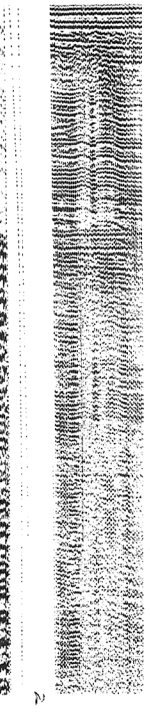
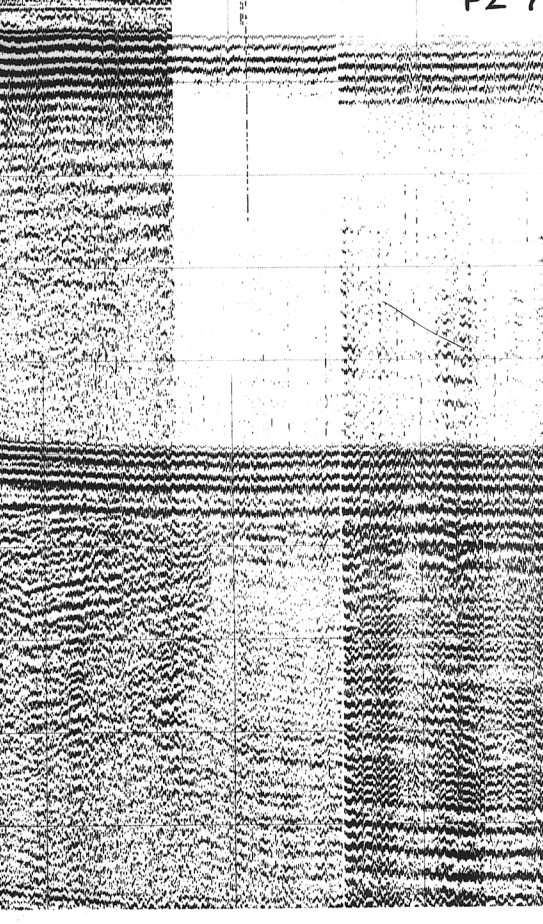
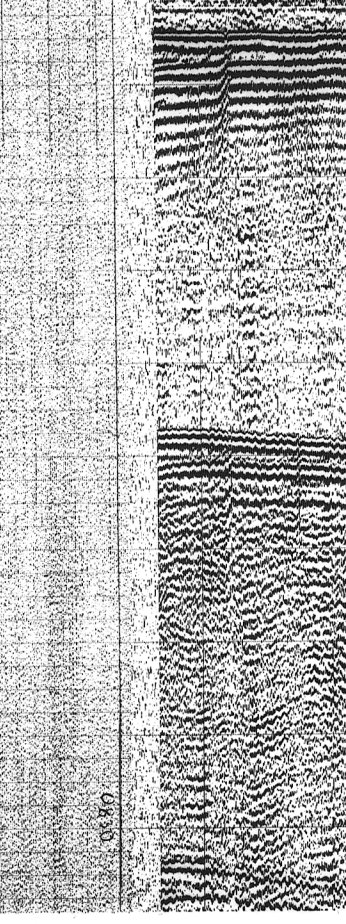
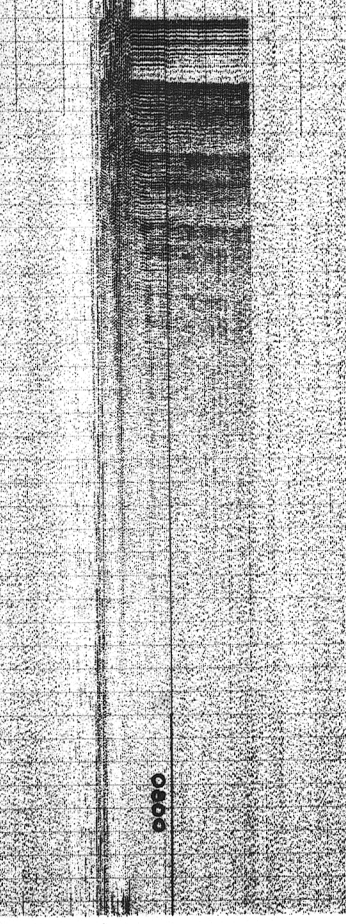
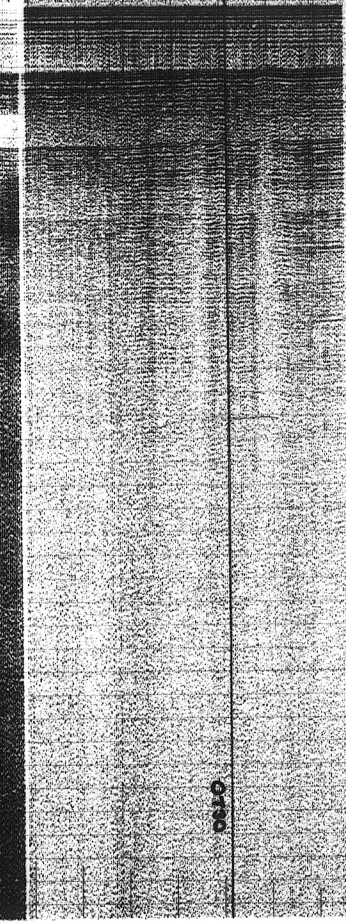
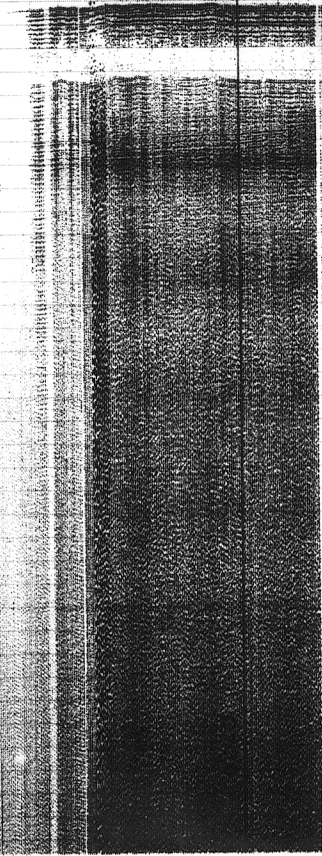
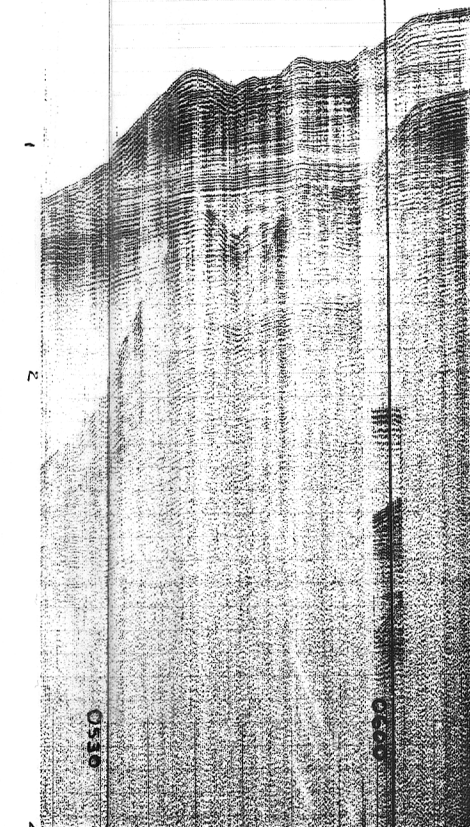
PZ 71-15-40

PZ 71-15-40

PZ 71-15-40

LING PZ 71-15C-40
May 28, 1971

0130
ST 114-4
100 12.008 3



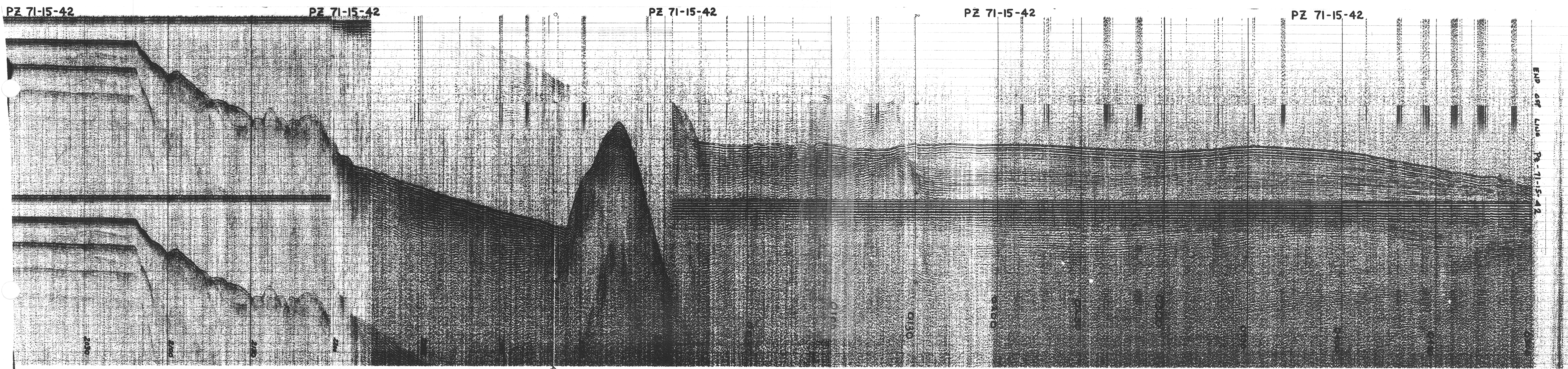
PZ 71-15-42

PZ 71-15-42

PZ 71-15-42

PZ 71-15-42

PZ 71-15-42



END OF LINE PZ-71-15-42

PZ 71-15-43

PZ 71-15-43

LINE PZ 71-15-43
40 cm in Bolt

50/100

2112

4

LINE 71-15-43

ENGLEFIELD BAY, Q.C.I., B.C.
25 May 71
END LINE 71-15-44.

PZ 71-15-44

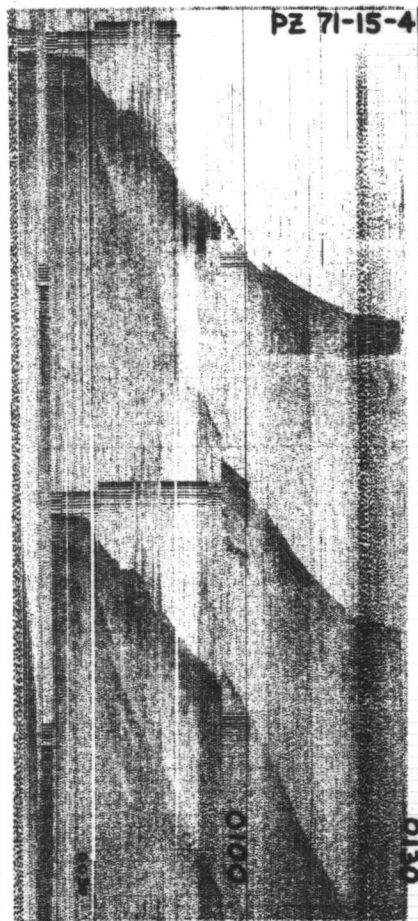
PZ 71-15-44

LINE 71-15-44
2 x 40 cm. Bolt

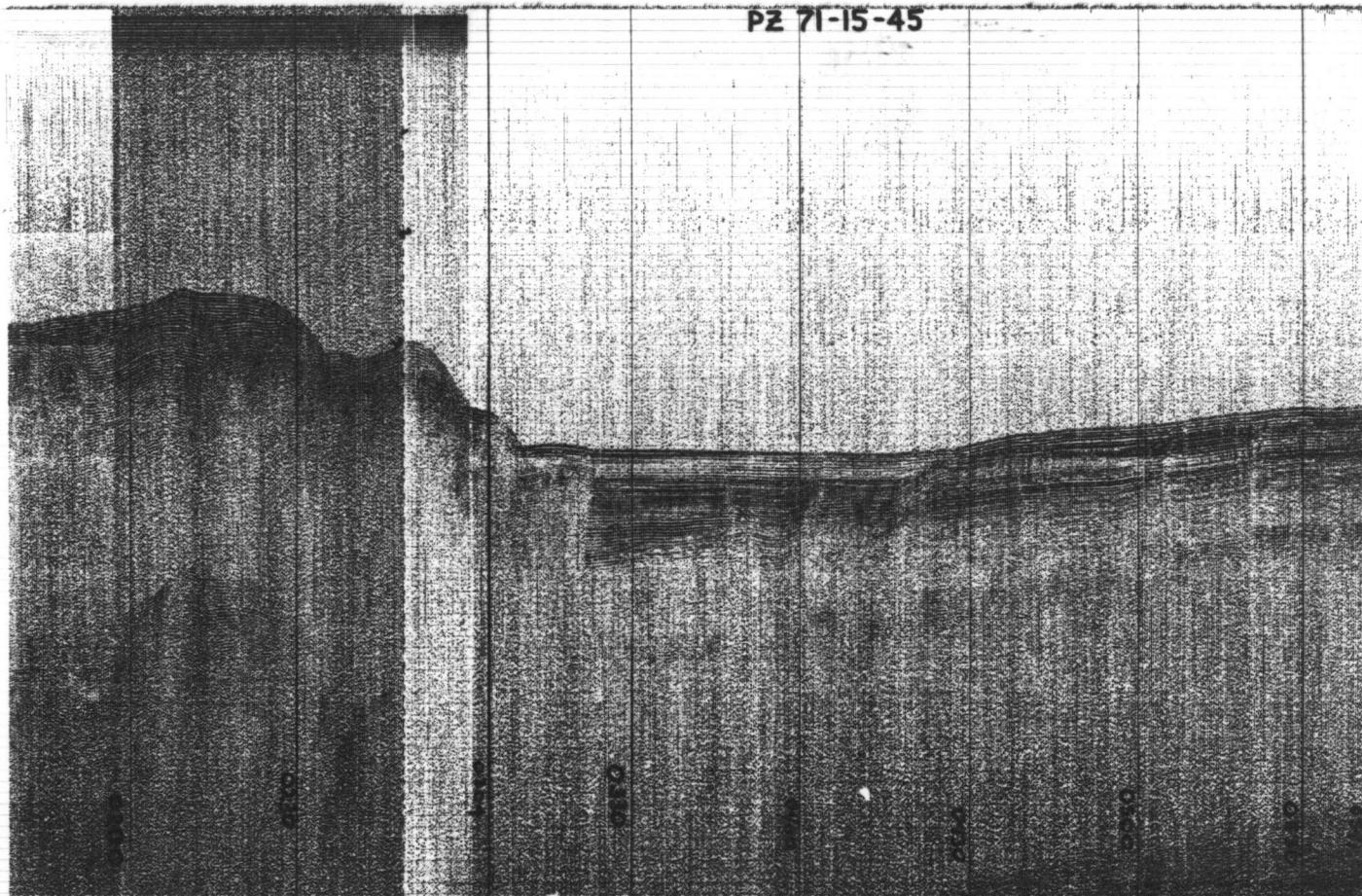
40/18

LINE 71-15-45
MAY 26, 1971

PZ 71-15-45



PZ 71-15-45



END OF LINE 71-15-45

LINE 71-15-45

LINE #	TIME	LATITUDE N	LONGITUDE W	TYPE OF NAVIGATIONAL FIX
69-050-3	0900	50°46.6'	129°10.0'	SATELLITE
	1000	50°45.5'	129°18.0'	INTERIM
	1100	50°44.4'	129°26.0'	"
	1130	50°43.8'	129°30.0'	SATELLITE
	1200	50°43.6'	129°34.4'	INTERIM
	1300	50°43.2'	129°43.1'	"
	1400	50°42.8'	129°51.9'	"
	1500	50°42.4'	130°00.6'	"
	1600	50°42.0'	130°09.4'	SATELLITE
	1700	50°41.7'	130°17.6'	INTERIM
	1800	50°41.4'	130°25.8'	SATELLITE
	1900	50°41.5'	130°33.4'	INTERIM
	1930	50°41.6'	130°37.2'	SATELLITE
69-050-4	0330	52°10.0'	134°06.8'	SATELLITE
	0420	52°09.8'	133°58.5'	INTERIM
	0500	52°09.6'	133°51.9'	"
	0600	52°09.3'	133°41.9'	"
	0700	52°09.1'	133°31.9'	"
	0800	52°08.8'	133°22.0'	"
	0830	52°08.7'	133°17.0'	SATELLITE
	0900	52°08.6'	133°11.8'	INTERIM
	1000	52°08.4'	133°01.4'	"
	1100	52°08.2'	132°51.0'	"
	1200	52°08.0'	132°40.6'	DEAD RECKONING
	1334	52°06.2'	132°46.4'	SATELLITE
	1400	52°06.2'	132°41.8'	INTERIM
	1500	52°06.2'	132°31.1'	"
	1600	52°06.2'	132°20.4'	"
	1700	52°06.2'	132°09.7'	"
	1800	52°06.2'	131°59.1'	"
	1900	52°06.2'	131°48.4'	SATELLITE
	2000	52°06.2'	131°37.6'	INTERIM
	2100	52°06.2'	131°26.9'	"
	2120	52°06.2'	131°23.3'	"
	2125	52°06.2'	131°22.4'	SATELLITE
	2134	52°05.8'	131°21.4'	"
	2200	52°04.1'	131°17.7'	INTERIM
	2300	51°59.9'	131°10.6'	SATELLITE
	0000	51°59.8'	131°20.2'	DEAD RECKONING
	0100	51°59.7'	131°29.8'	SATELLITE
	0200	51°59.9'	131°39.7'	INTERIM
	0300	52°00.2'	131°49.5'	"
	0400	52°00.4'	131°59.4'	"
	0500	52°00.6'	132°09.3'	"
	0600	52°00.8'	132°19.2'	"
	0700	52°01.1'	132°29.0'	"
	0712	52°01.1'	132°31.0'	DEAD RECKONING

LINE #	TIME	LATITUDE N	LONGITUDE W	TYPE OF NAVIGATIONAL FIX
69-050-5	1030	51°10.0'	133°33.0'	DEAD RECKONING
	1100	51°08.3'	133°28.8'	INTERIM
	1200	51°04.8'	133°20.5'	"
	1300	51°01.2'	133°12.2'	"
	1400	50°57.8'	133°03.9'	"
	1430	50°56.0'	132°59.7'	SATELLITE
	1500	50°54.3'	132°55.6'	INTERIM
	1600	50°50.8'	132°47.4'	"
	1700	50°47.4'	132°39.2'	"
	1800	50°44.0'	132°31.0'	"
	1900	50°40.5'	132°22.8'	"
	2000	50°37.1'	132°14.6'	SATELLITE
	2100	50°33.5'	132°06.4'	INTERIM
	2200	50°29.9'	131°58.2'	"
	2300	50°26.3'	131°50.0'	"
	0000	50°22.7'	131°41.8'	DEAD RECKONING
	0100	50°19.1'	131°33.7'	SATELLITE
	0124	50°18.0'	131°30.8'	SATELLITE
69-050-6	0800	50°20.6'	131°26.0'	SATELLITE
	0900	50°24.3'	131°18.5'	INTERIM
	1000	50°28.0'	131°11.0'	"
	1100	50°31.6'	131°03.5'	"
	1200	50°35.3'	130°56.0'	"
	1300	50°39.0'	130°48.5'	SATELLITE
	1400	50°42.9'	130°40.8'	INTERIM
	1500	50°46.8'	130°33.2'	"
	1600	50°50.7'	130°25.5'	"
	1700	50°54.6'	130°17.8'	"
	1730	50°56.5'	130°14.0'	SATELLITE
	1800	50°58.4'	130°10.2'	INTERIM
	1900	51°02.1'	130°02.7'	"
	2000	51°05.8'	129°55.2'	"
	2100	51°09.5'	129°47.7'	"
	2200	51°13.2'	129°40.2'	"
	2300	51°16.9'	129°32.7'	"
	2330	51°18.8'	129°29.0'	SATELLITE
69-050-7	0630	50°26.2'	128°19.4'	SATELLITE
	0700	50°24.1'	128°22.8'	INTERIM
	0800	50°20.0'	128°29.6'	"
	0900	50°15.8'	128°36.4'	"
	1000	50°11.7'	128°43.2'	"
	1100	50°07.5'	128°50.0'	SATELLITE
	1200	50°03.3'	128°56.5'	INTERIM
	1300	49°59.0'	129°03.0'	"
	1400	49°54.8'	129°09.5'	"
	1500	49°50.6'	129°16.0'	"
	1600	49°46.3'	129°22.5'	"
	1700	49°42.1'	129°29.0'	SATELLITE

LINE #	TIME	LATITUDE N	LONGITUDE W	TYPE OF NAVIGATIONAL FIX
69-050-8	2120	48°31.0'	126°59.6'	SATELLITE
	2200	48°33.8'	126°55.1'	INTERIM
	2230	48°35.9'	126°51.8'	SATELLITE
	2300	48°38.2'	126°48.2'	INTERIM
	0000	48°42.7'	126°40.8'	DEAD RECKONING
	0100	48°47.2'	126°33.6'	INTERIM
	0200	48°51.7'	126°26.3'	"
	0300	48°56.3'	126°19.1'	"
	0400	49°00.8'	126°11.8'	SATELLITE
71-15-40	0130	51°17.5'	130°20.0'	LORAN
	0200	51°19.0'	130°19.5'	"
	0300	51°22.2'	130°14.0'	"
	0404	51°25.5'	130°08.8'	SATELLITE
	0504	51°27.3'	130°05.2'	"
	0600	51°29.4'	130°04.3'	LORAN
	0610	51°30.0'	130°03.0'	SATELLITE

LINE #	TIME	LATITUDE N	LONGITUDE W	TYPE OF NAVIGATIONAL FIX
71-15-42	2000	54°24.4'	133°38.2'	RADAR
	2036	54°22.8'	133°46.7'	SATELLITE
	2100	54°22.8'	133°51.3'	INTERIM
	2222	54°23.6'	134°08.1'	SATELLITE
	2300	54°23.5'	134°15.5'	DEAD RECKONING
	0000	54°23.0'	134°26.0'	"
	0100	54°24.5'	134°38.0'	"
	0200	54°24.5'	134°51.8'	SATELLITE
	0300	54°24.6'	135°02.0'	DEAD RECKONING
	0400	54°24.0'	135°12.5'	"
	0508	54°22.7'	135°27.4'	SATELLITE
71-15-43	2118	53°06.5'	132°38.0'	RADAR
	2200	53°04.2'	132°45.2'	"
	2300	53°01.4'	132°56.1'	"
	0000	52°58.2'	133°07.3'	"
	0100	52°55.5'	133°17.0'	"
	0200	52°52.4'	133°29.1'	SATELLITE
71-15-44	0310	52°44.5'	133°17.7'	RADAR
	0326	52°43.8'	133°15.0'	SATELLITE
	0400	52°45.6'	133°09.9'	RADAR
	0500	52°47.5'	133°01.4'	SATELLITE
	0530	52°47.2'	132°57.4'	"
	0600	52°49.00'	132°53.3'	RADAR
	0700	52°52.0'	132°46.8'	"
	0800	52°54.6'	132°39.2'	"
	0900	52°57.1'	132°30.7'	"
	0943	52°58.7'	132°25.0'	"
71-15-45	0030	52°28.7'	131°46.2'	RADAR
	0100	52°26.9'	131°50.8'	"
	0200	52°23.4'	131°58.8'	"
	0300	52°19.2'	132°07.4'	"
	0400	52°15.7'	132°14.9'	"
	0446	52°12.0'	132°22.2'	SATELLITE
	0540	52°08.9'	132°29.7'	RADAR

Queen Charlotte Sound, Hecate Strait,
Dixon Entrance & Adjacent NE Pacific

Scale: 1:525,000
Mercator Projection

Nautical Miles
0 5 10 15 20 25 30
Kilometers
0 25 50

0508 0300 0100 2300 2100 2000
LINE 71-15-42

GRAHAM

ISLAND

LINE 71-15-43

LINE 71-15-44

LINE 71-15-45

LINE 69-050-4a

LINE 69-050-4b

LINE 71-15-40

LINE 69-050-6

LINE 69-050-3

LINE 69-050-5

132

131

130

129

