

COULSON TOWNSHIP
DISTRICT OF COCHRANE, ONTARIO

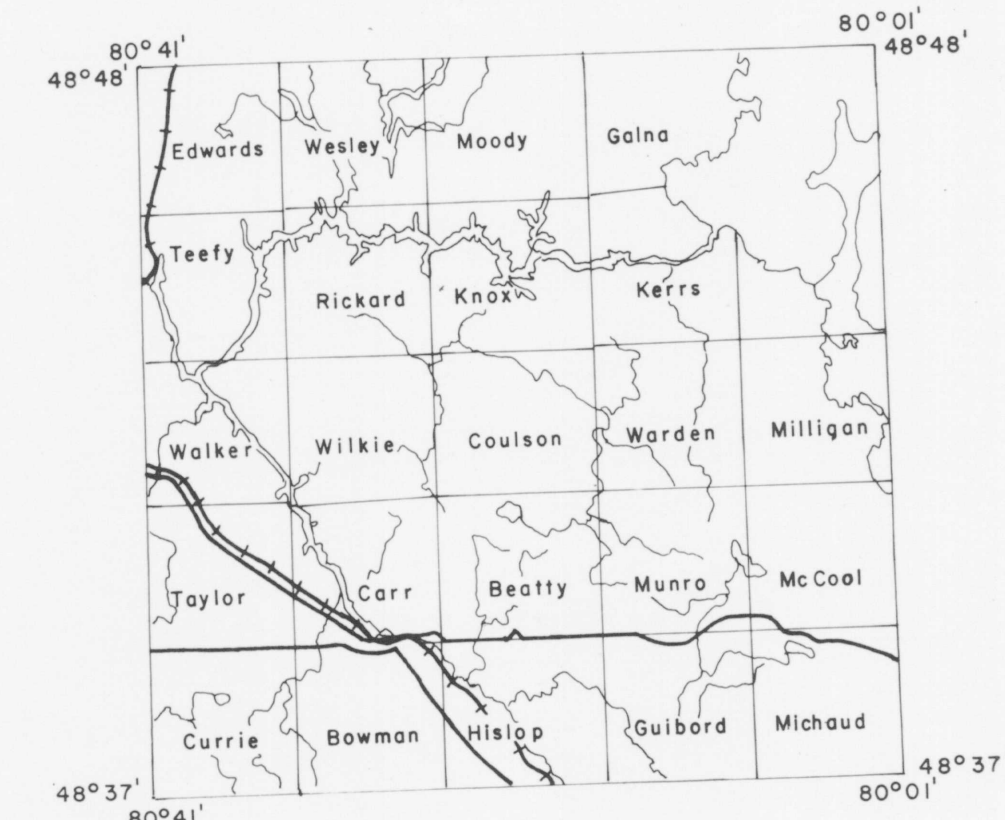
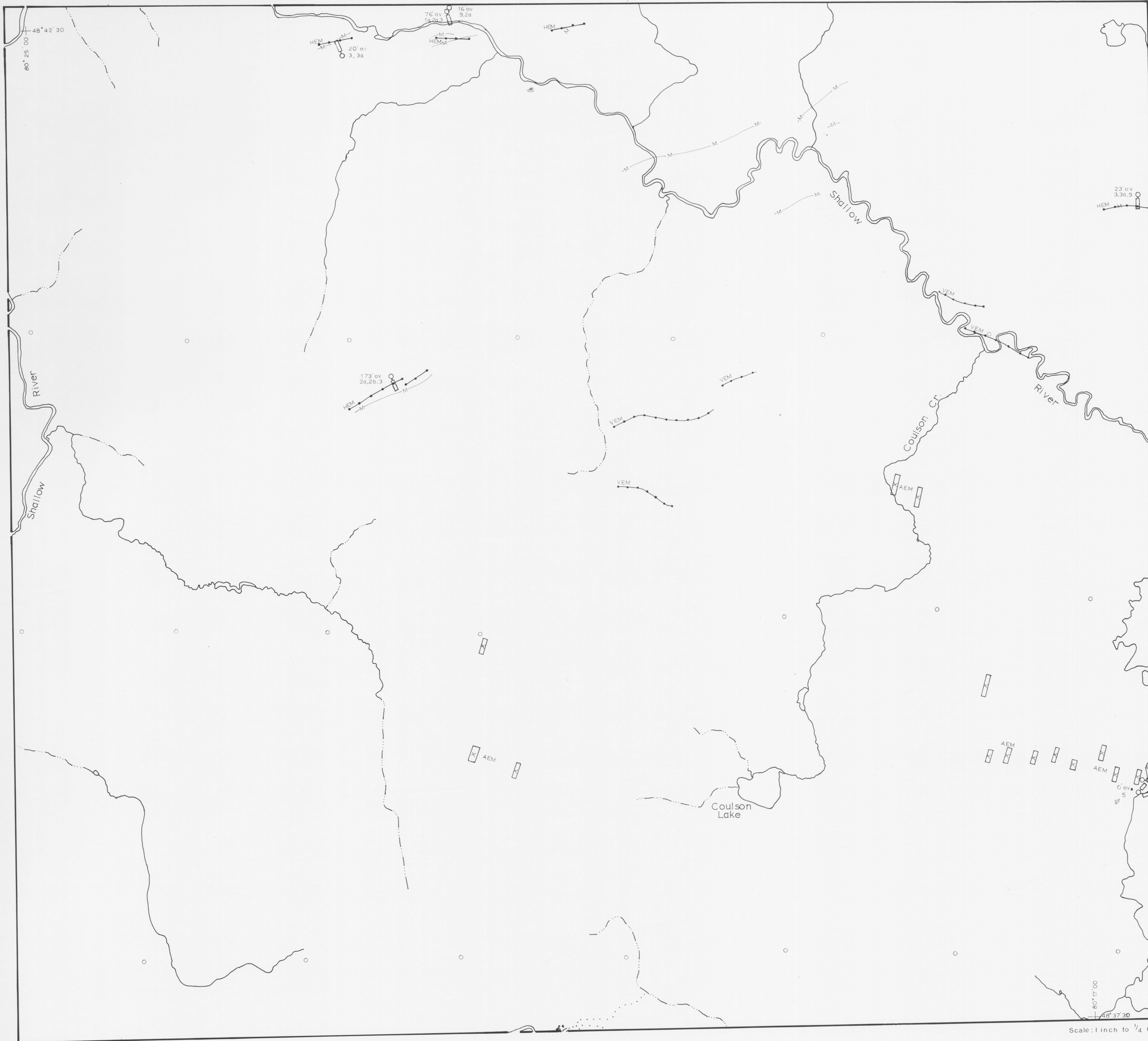
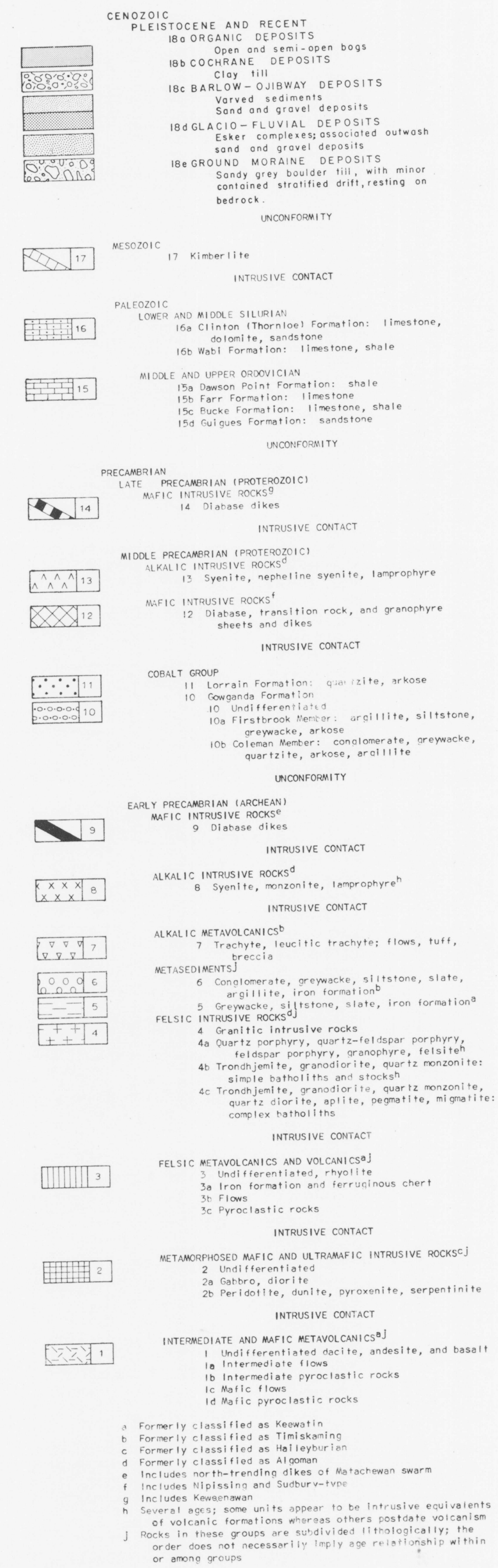


TABLE OF LITHOLOGICAL UNITS
KIRKLAND LAKE DATA SERIES

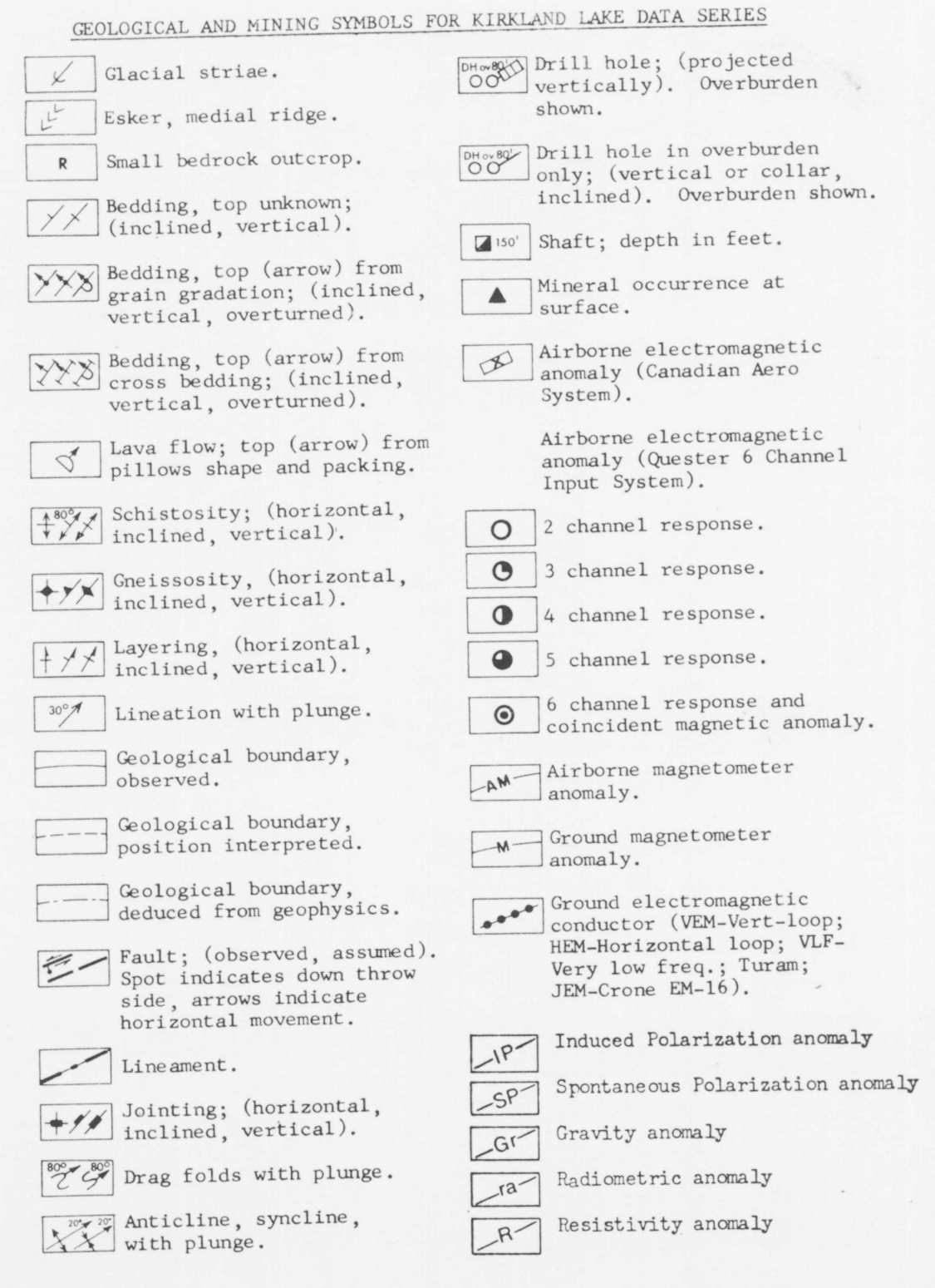
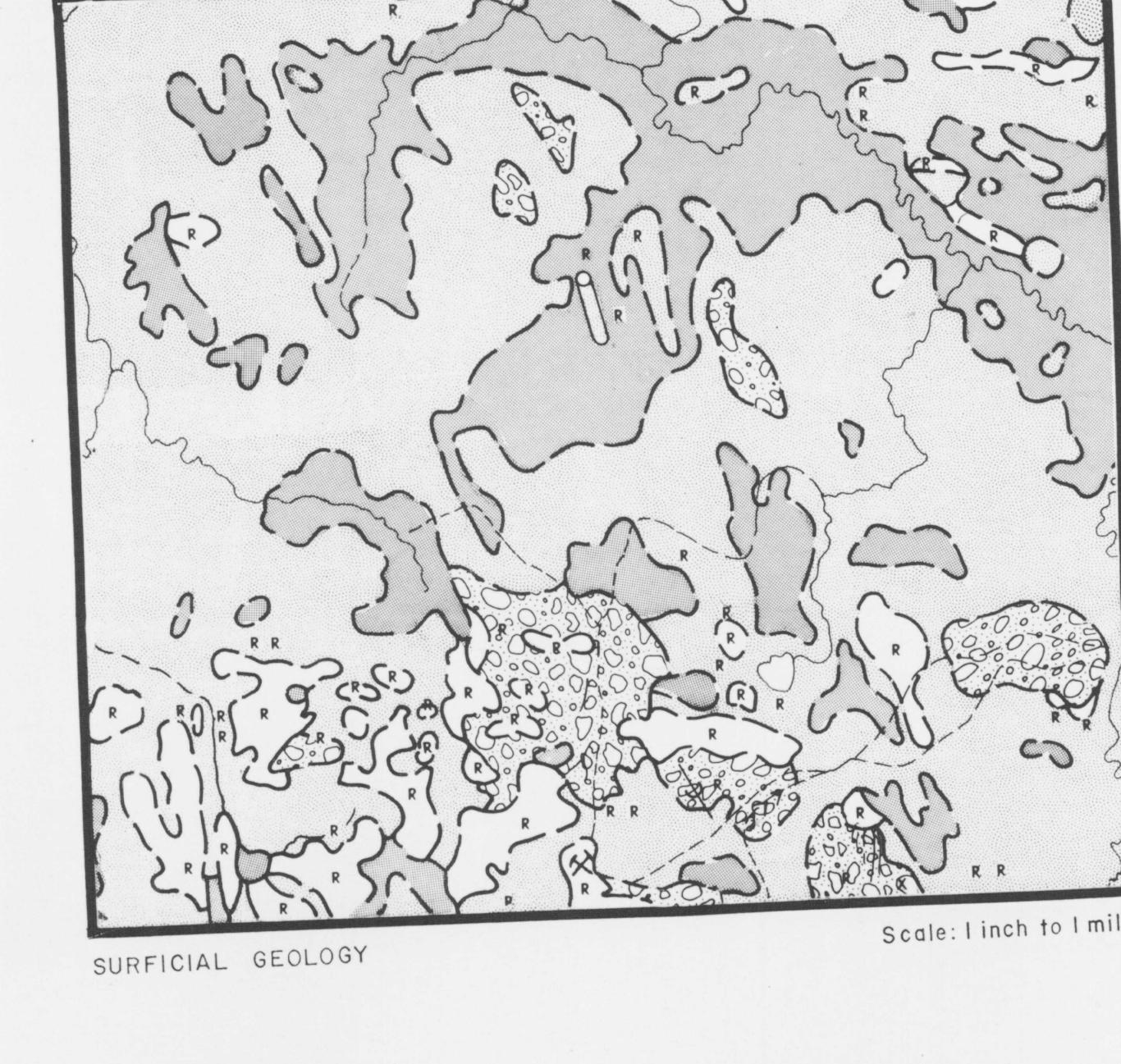
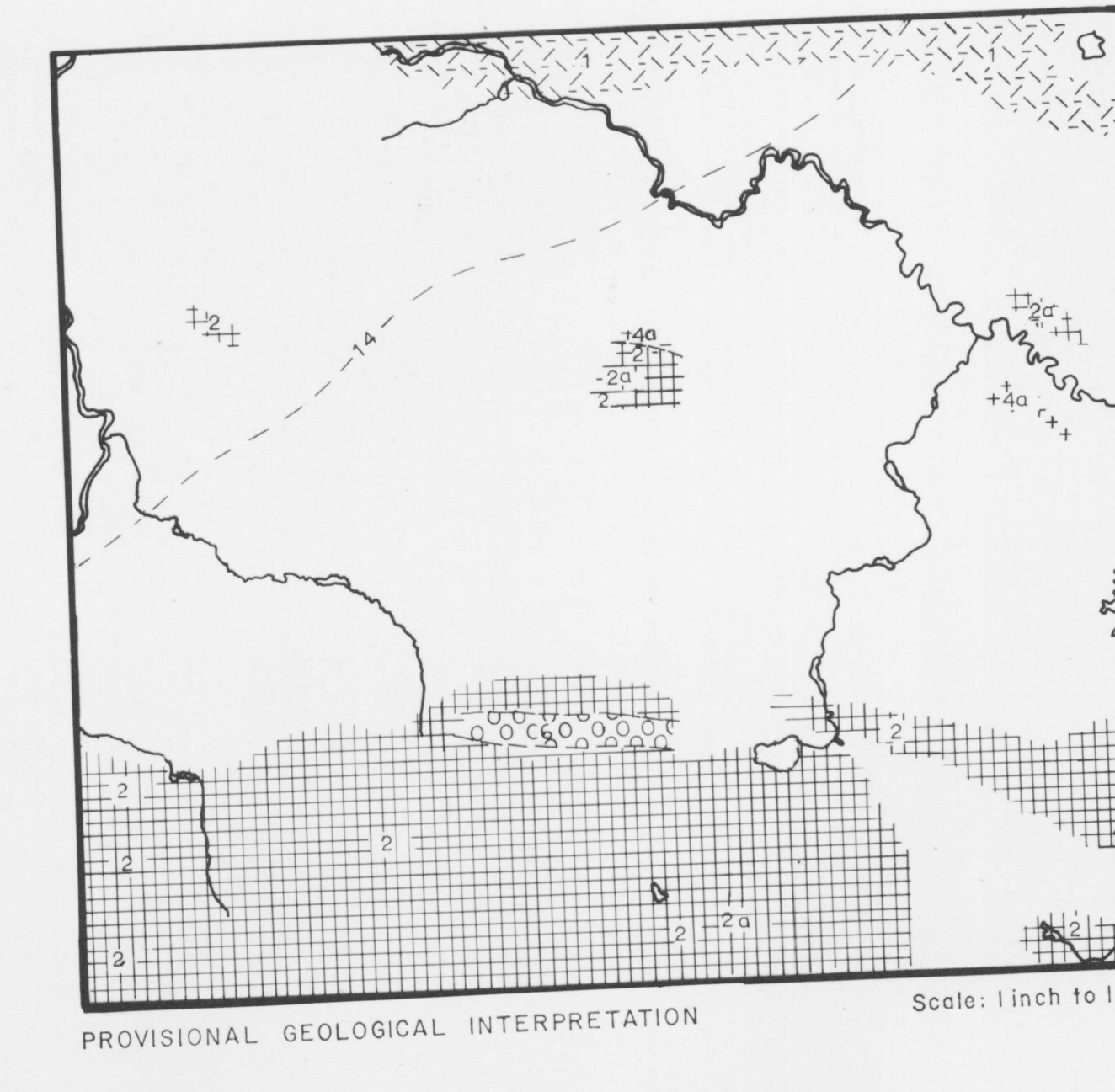
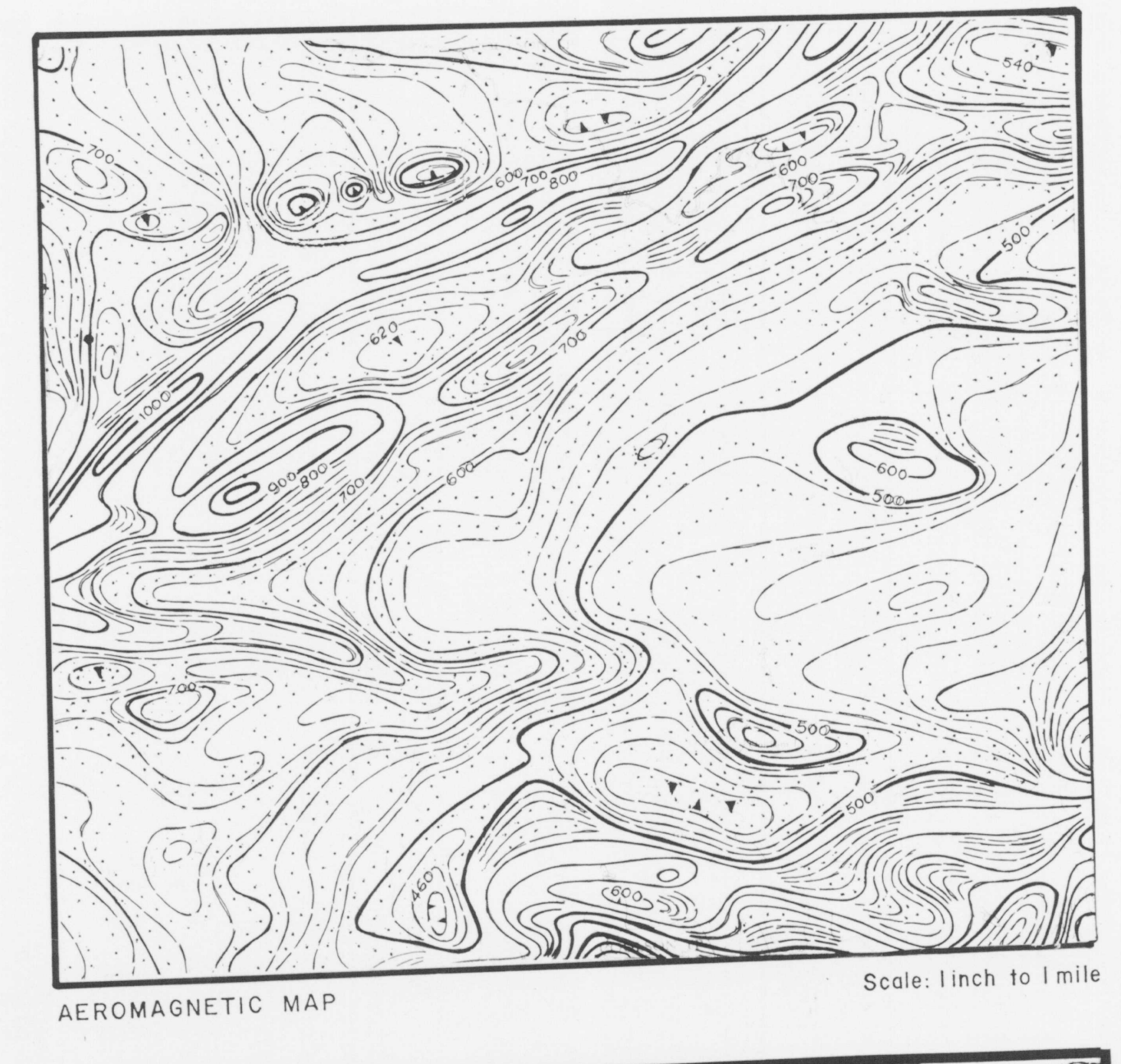
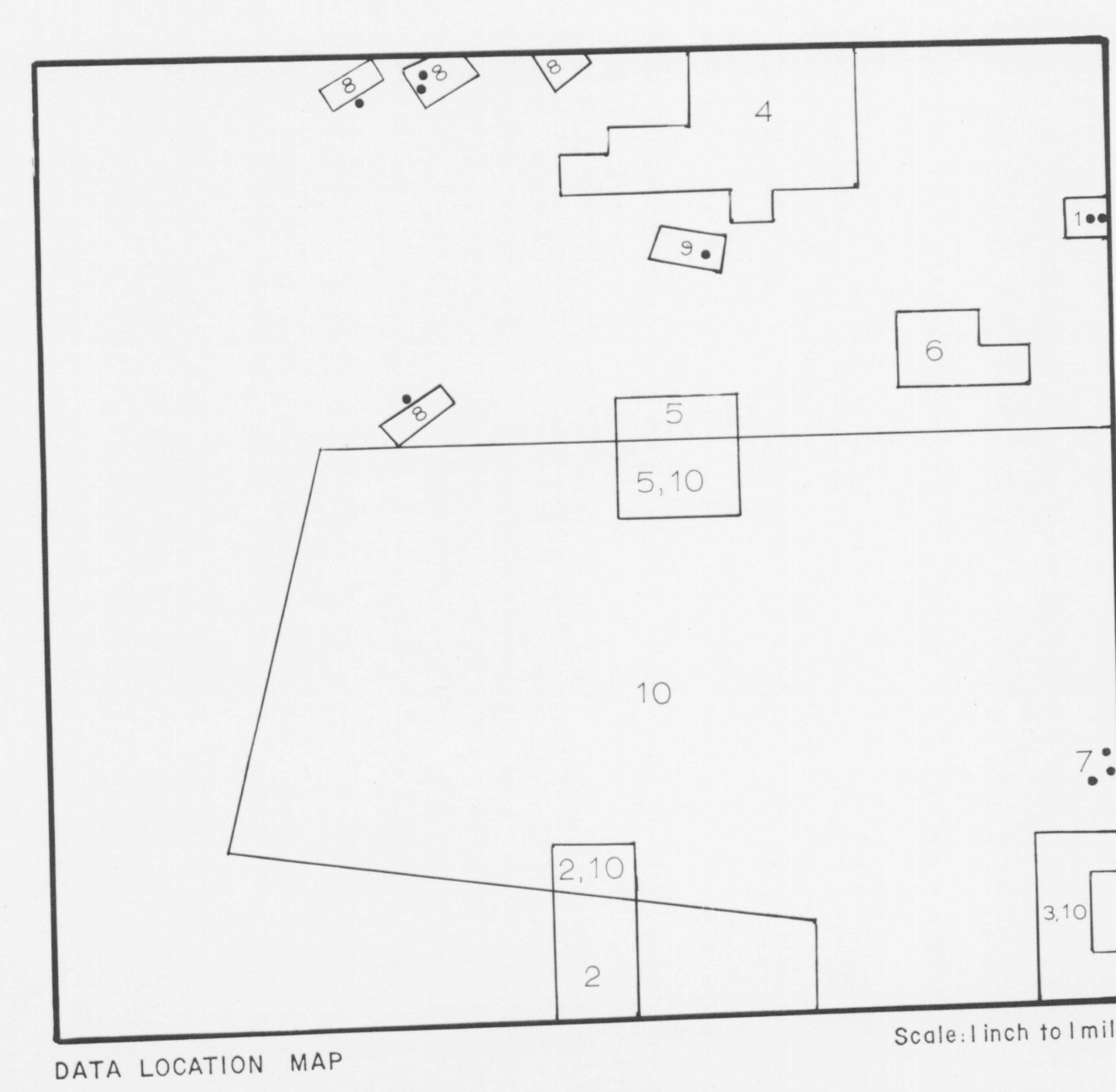


DATA FILED WITH THE ONTARIO DEPARTMENT OF MINES AND NORTHERN AFFAIRS RESIDENT GEOLOGIST AT KIRKLAND LAKE Through December 1971

	GEOLOGICAL	DIAMOND DRILLING	AEROBIC MAGNETOMETER	AEROBIC ELECTROMAGNETIC	SURFICIAL MAGNETOMETER	VERTICAL LOOP MAGNETOMETER	INDUCED POLARIZATION	WLF	RESISTIVITY	DENSITY	SEISMOLOGICAL	OTHERS
1. Area Mines Ltd.		68			68							22*
2. Devon Gold Mines Ltd.		22			46							
3. McIntyre Porcupine Mines Ltd. "Warden"		46			65							
4. Noranda Exploration Co. Ltd. "Centre Shallow"					65							
5. Noranda Exploration Co. Ltd. "Upper Shallow"					65							
6. Noranda Exploration Co. Ltd. "Hoot Owl"					65							
7. Shallow River Gold Mines Ltd.		30			65							
8. Twin Falls Syndicate "Coulson & Knox"		65			65							
9. Twin Falls Syndicate "Richards, Coulson and Wilkie"		65			65							
10. Union Carbide Explorations Ltd. "Coulson, Milligan, McCool, Warden, Indian Reserve 70 & Rand"		65	65		65							

* Underground

Notes: The numbers on the above list stand for the year when the work was done, e.g., 65 for 1966. On the accompanying DATA LOCATION MAP, only areas for which work was submitted to the Department are outlined, and thus a company may hold more ground than indicated here. The numbers on the DATA LOCATION MAP and any circled numbers refer to the company list above.



METAL AND MINERAL REFERENCE
For Kirkland Lake Data Series

Ag	Silver	Mo	Molybdenite
Al	Alumina	Ni	Nickel
Au	Gold	Pb	Lead
Ca	Calcium	Pt	Palladium
Co	Cobalt	Pu	Uranium
Cu	Copper	Py	Pyrite
Cy	Chalcopyrite	Sp	Sphalerite
Ch	Chalcocite	St	Staurolite
Cs	Cesium	Sr	Strontianite
Ep	Epilote	Tl	Thallium
Fe	Iron	U	Uranium
Fl	Fluorite	V	Vanadium
Ga	Galenite	W	Wolframite
Ge	Galenite	X	Xenotime
Gr	Graphite	Y	Yttrium
Gu	Galena	Zn	Zinc
Ma	Magnetite		
Mn	Manganese		
Ms	Muscovite		
MI	Millerite		

Sources of Information
Digitized by the Geological Survey of Canada in co-operation with the Ontario Department of Mines and Northern Affairs from data on file with the Resident Geologist (Ontario Department of Mines and Northern Affairs), Kirkland Lake.

NTS Reference L2 A/9
GMR-250 Aeromagnetic Map 2060 (rev.)
GMR Geophysical Compilation Series Map 2066
GMR Preliminary Geological Map F.119
GMR Total Intensity Aeromagnetic Map F.641
GMR Total Count Helicopter Gamm Ray Spectrometer Map F.647
GMR Apparent Resistivity Helicopter 2-Phase Map F.653
GMR In-Line / In-Phase Helicopter Radiometrics Map F.659
GMR Surficial Geology Map 46-1959

OPEN FILE
104
JUN 1972
GEOLOGICAL SURVEY
OTTAWA

This map has been produced from a scanned version of the original map. Reproduction for non-commercial use is permitted.