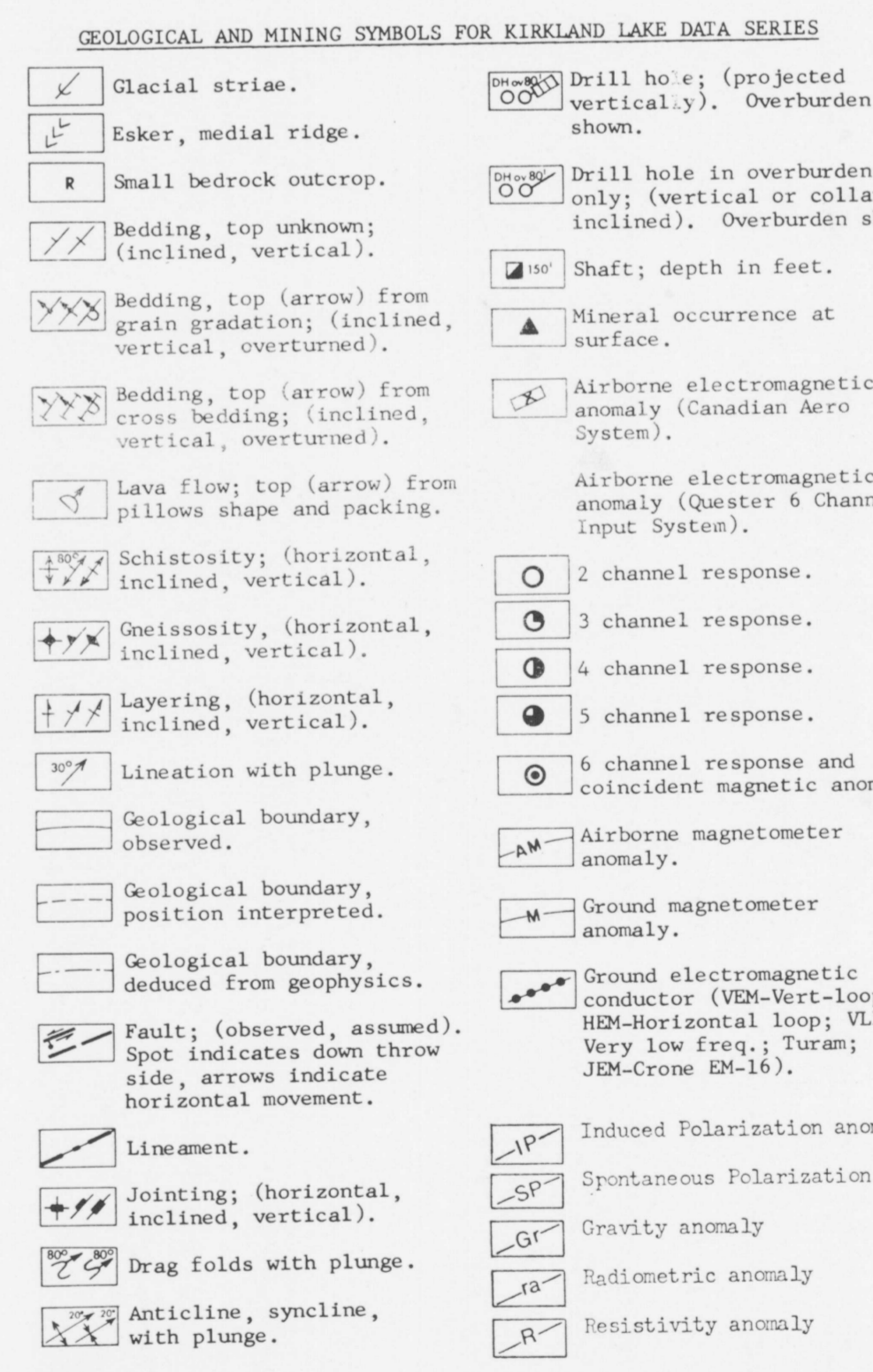
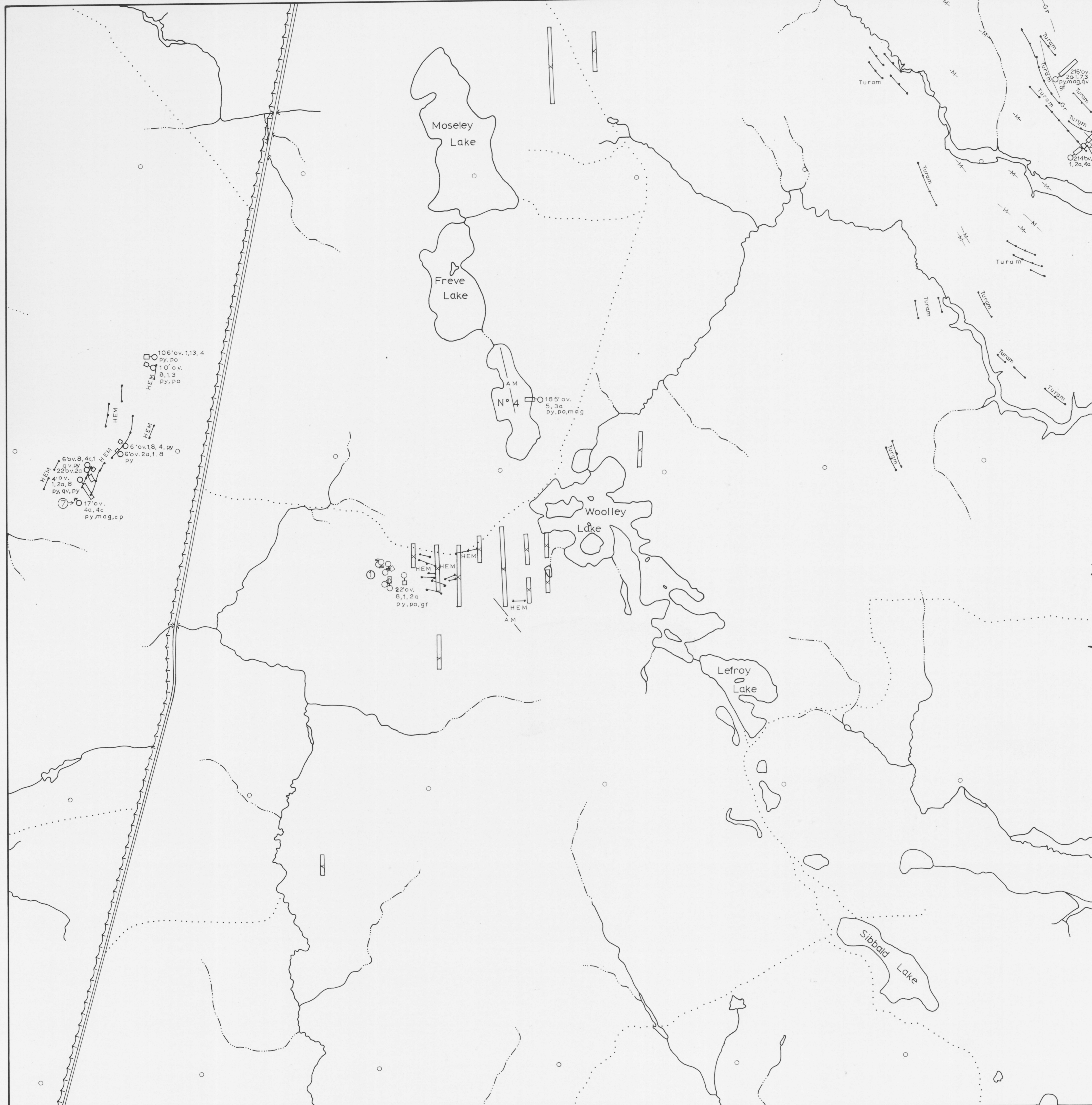
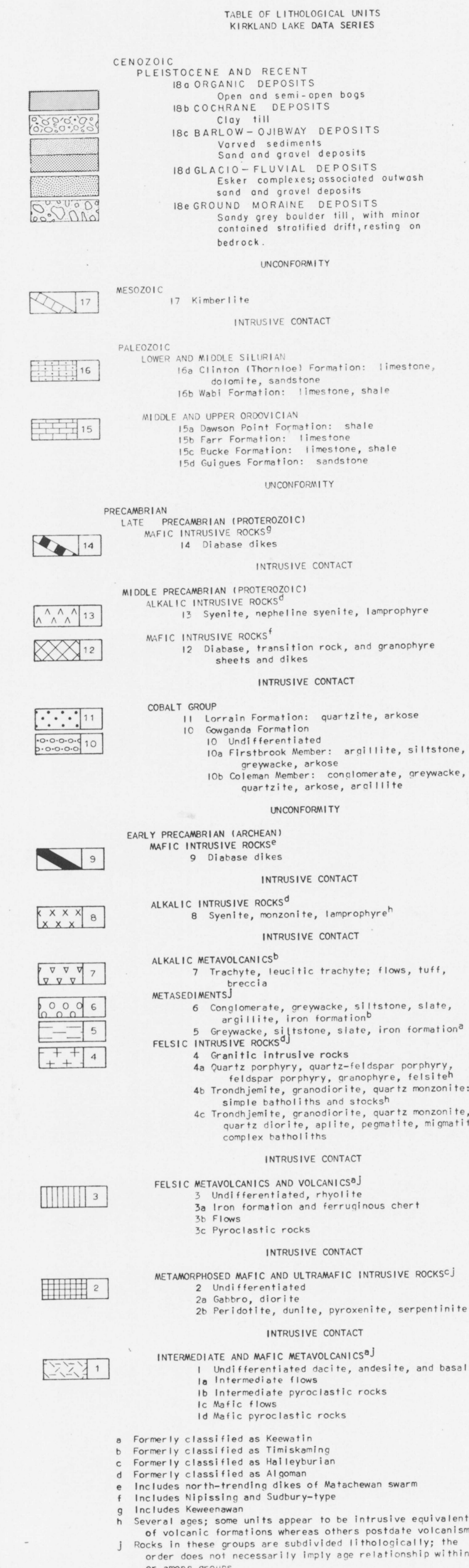
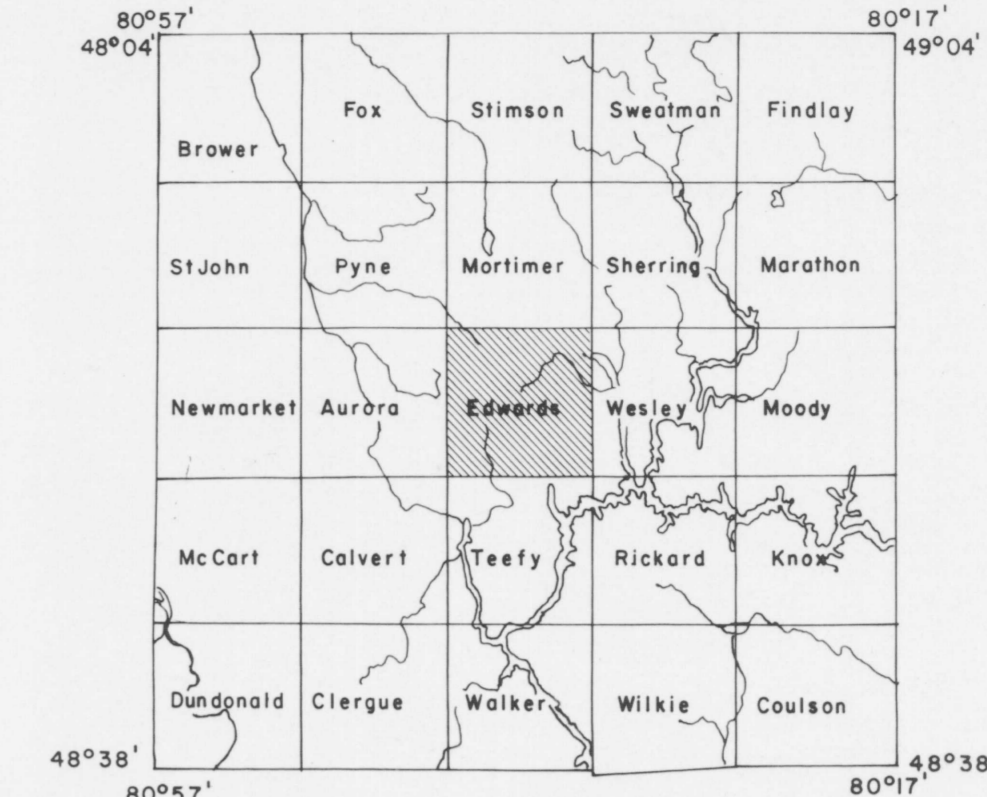


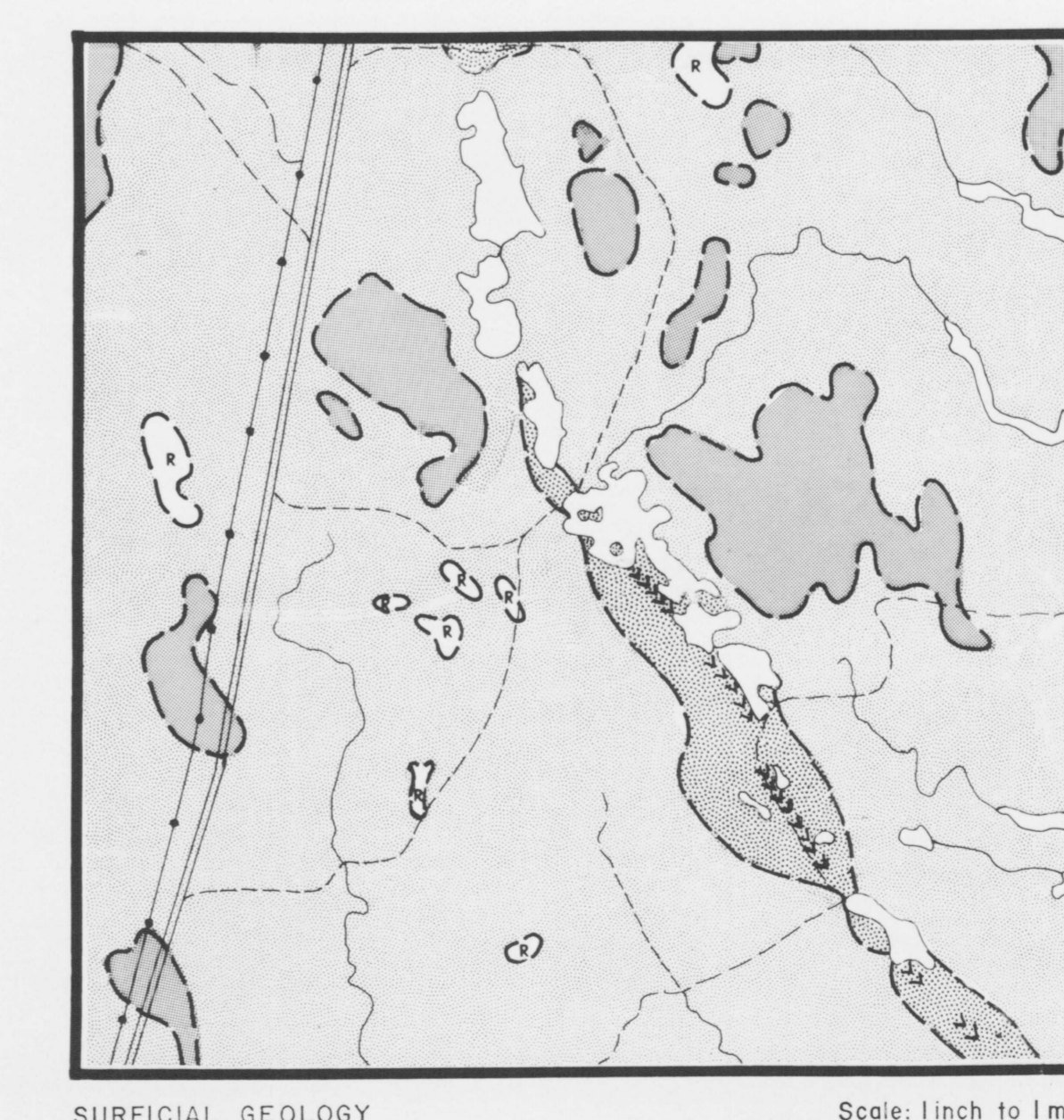
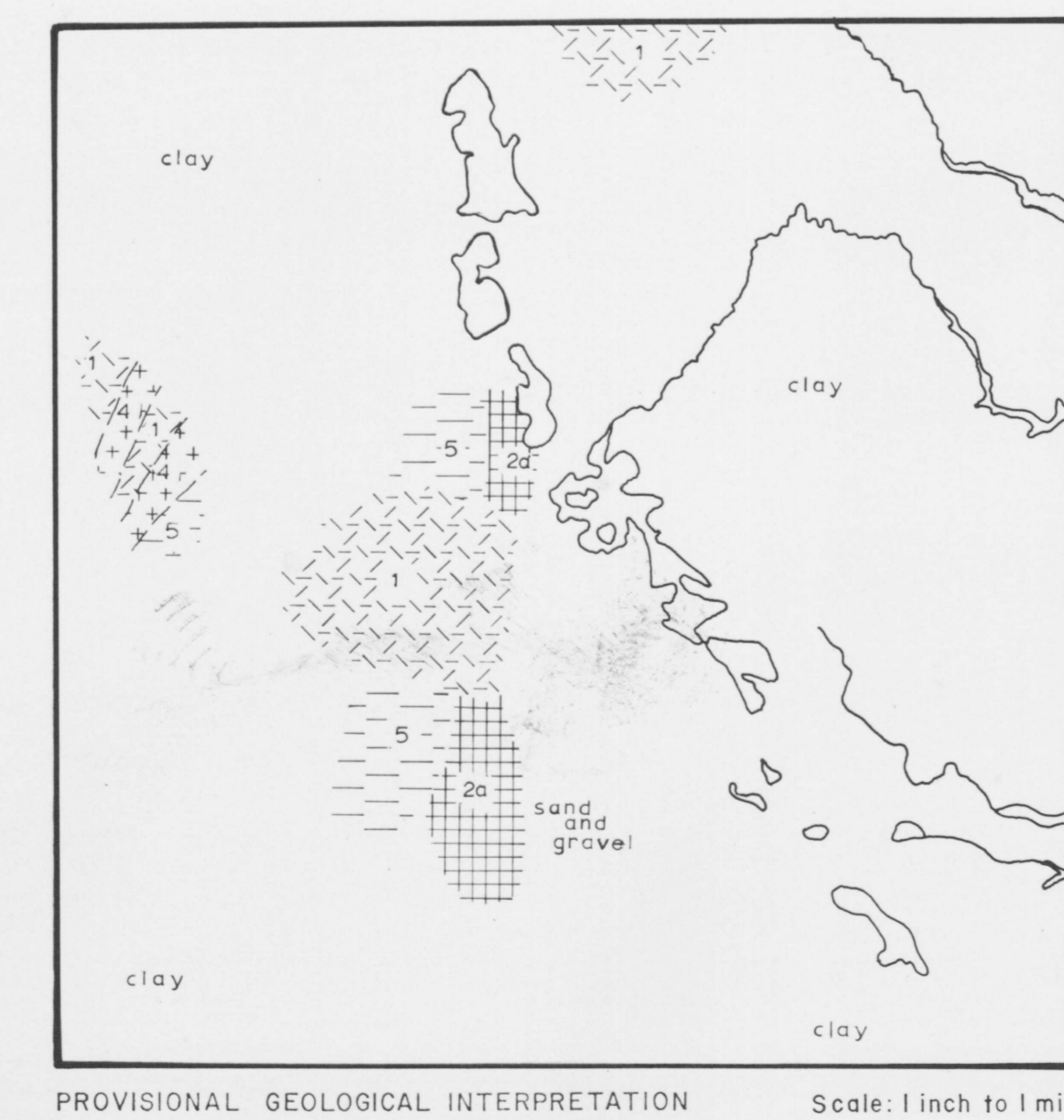
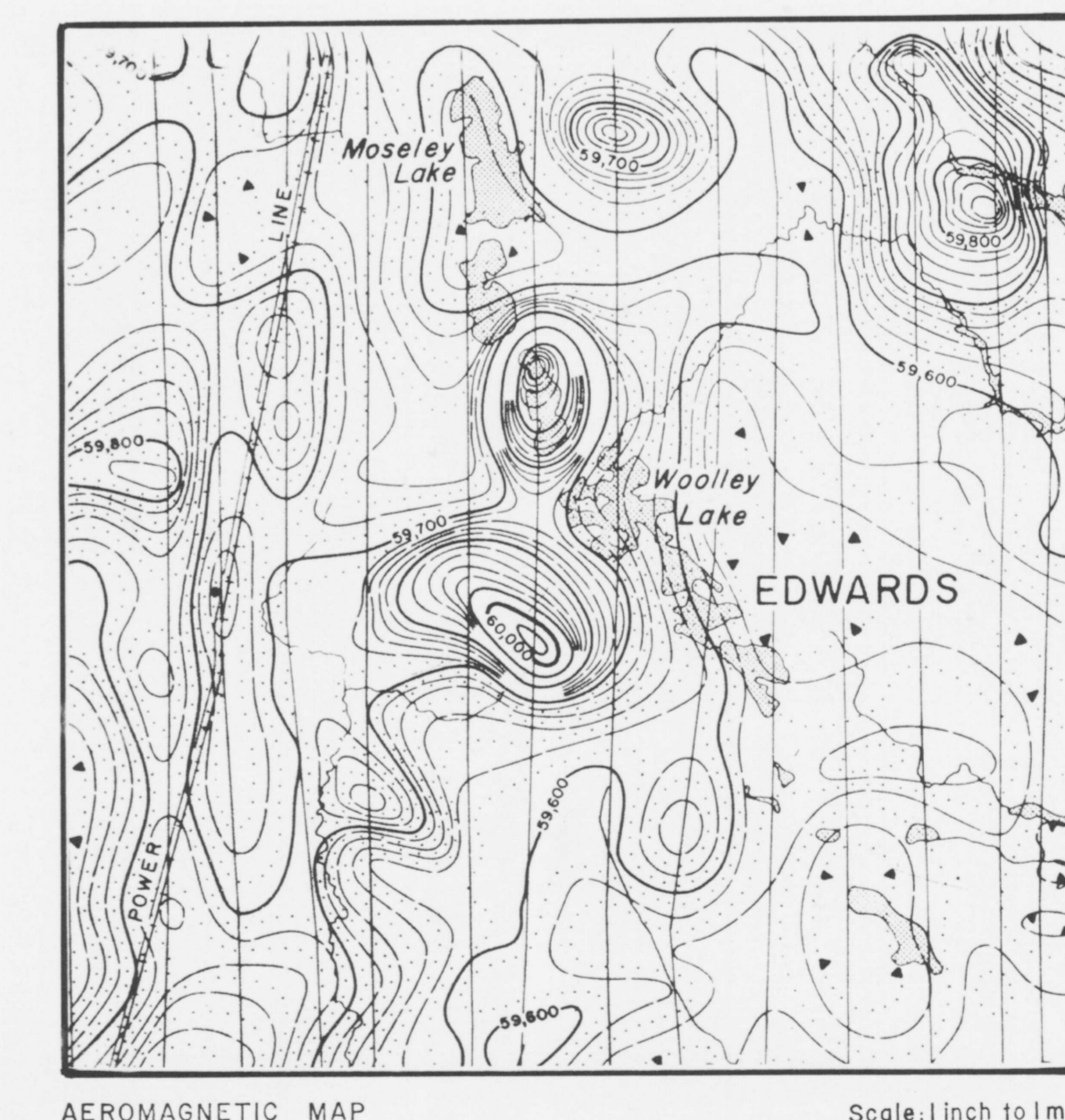
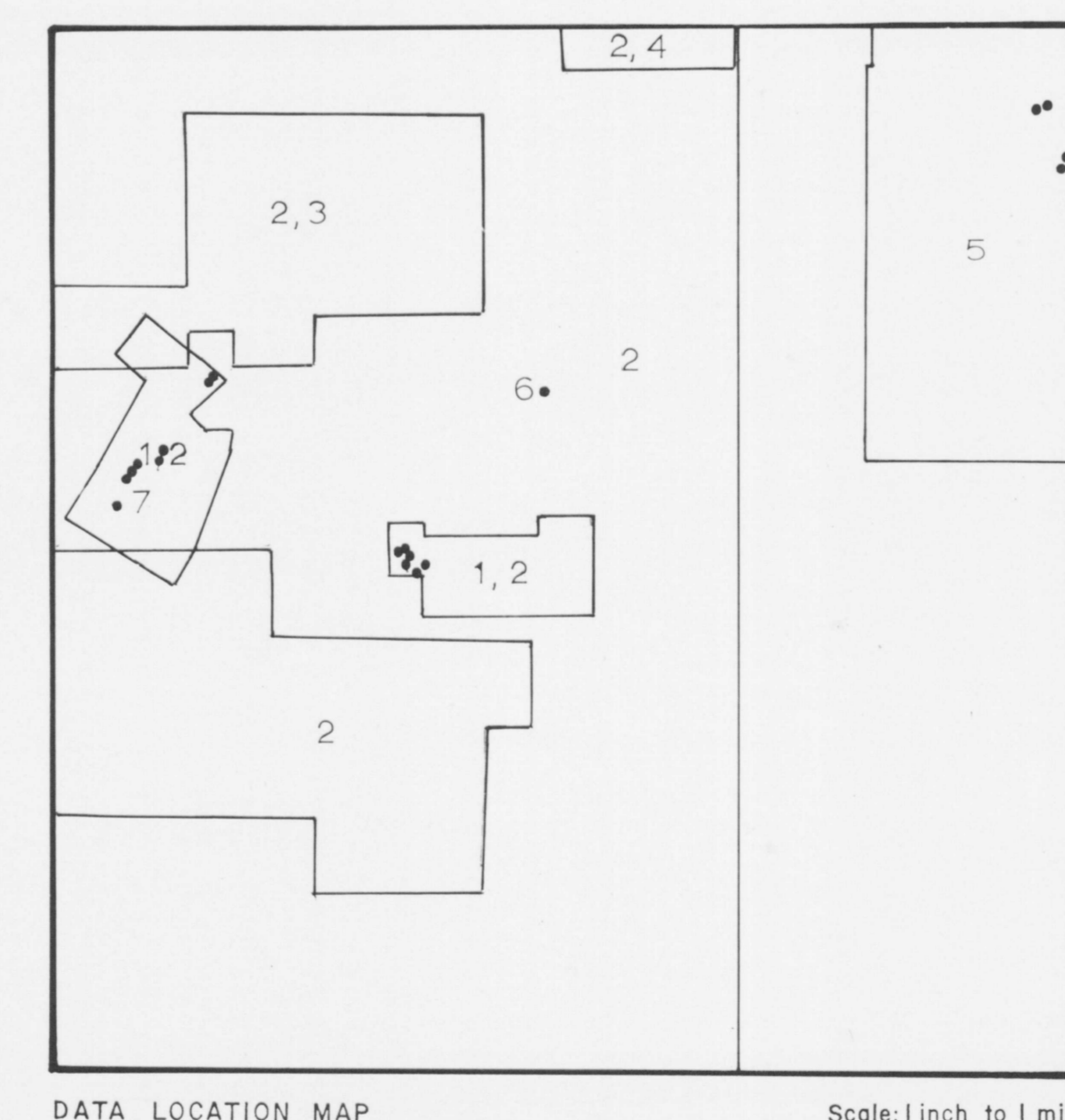
EDWARDS TOWNSHIP
DISTRICT OF COCHRANE, ONTARIO



DATA FILED WITH THE ONTARIO DEPARTMENT OF MINES AND NORTHERN AFFAIRS RESIDENT GEOLOGIST AT KIRKLAND LAKE Through March 1972

	GEOLOGICAL	DIAMOND DRILLING	AIRBORNE MAGNETOMETER	AIRBORNE ELECTROMAGNETOMETER	GROUND MAGNETOMETER	VERTICAL LOOP ELECTROMAGNETOMETER	HORIZONTAL LOOP ELECTROMAGNETOMETER	TURAM ELECTROMAGNETOMETER	JSA	INDUCED POLARIZATION	VLF	RESISTIVITY	GRAVITY	GEOCHEMICAL	OTHERS
1. Canadian Javelin Ltd. "J10"	64	64*					64								
2. Canadian Javelin Ltd. "J11"	64		64	64											
3. Canadian Javelin Ltd. "J12"	64														
4. Canadian Javelin Ltd. "J13"	64		64	64											
5. Glen Lake Silver Mines Ltd.	64				62			64					64		
6. International Nickel of Canada Ltd.,	64														
7. Tesluk	64	58**													

* 7 OH, composite log mapped
** 7 OH, composite log mapped



METAL AND MINERAL REFERENCE
For Kirkland Lake Data Series

Ag	Silver	Mo	Molybdenite
ash	Asbestos	Ni	Nickel
Au	Gold	Pb	Lead
cd	Cadmium	Pt	Platinum
Co	Cobalt	pent	Pentlandite
cp	Chalcoprite	pp	Pyrrhotite
Cr	Chromite	Pl	Platinum
Cu	Copper	Pr	Pyrite
ep	Episote	qcv	Quartz-carbonate vein
Fe	Iron	Q	Quartz vein
Fl	Fluorite	serp	Serpentine
gn	Garnet	sp	Sphalerite
gn	Galena	spe	Speckledite
mag	Magnetite	tal	Talc
mar	Marcasite	Tn	Tin
ml	Millevite	Zn	Zinc

Sources of Information
Compiled by the Geological Survey of Canada in co-operation with the Ontario Department of Mines and Northern Affairs from data on file with the Resident Geologist (Ontario Department of Mines and Northern Affairs), Kirkland Lake.

NTS Reference 42 A/15
OM-200 Aeromagnetic Map 2370
CGS Geological Compilation Series Map 206
OM Preliminary Geological Map P-155
CGS Surficial Geology Map 46-197

OPEN FILE
104
JUN 1972
GEOLOGICAL SURVEY
OTTAWA

This map has been produced from a scanned version of the original map. Reproduction for non-commercial use is permitted.