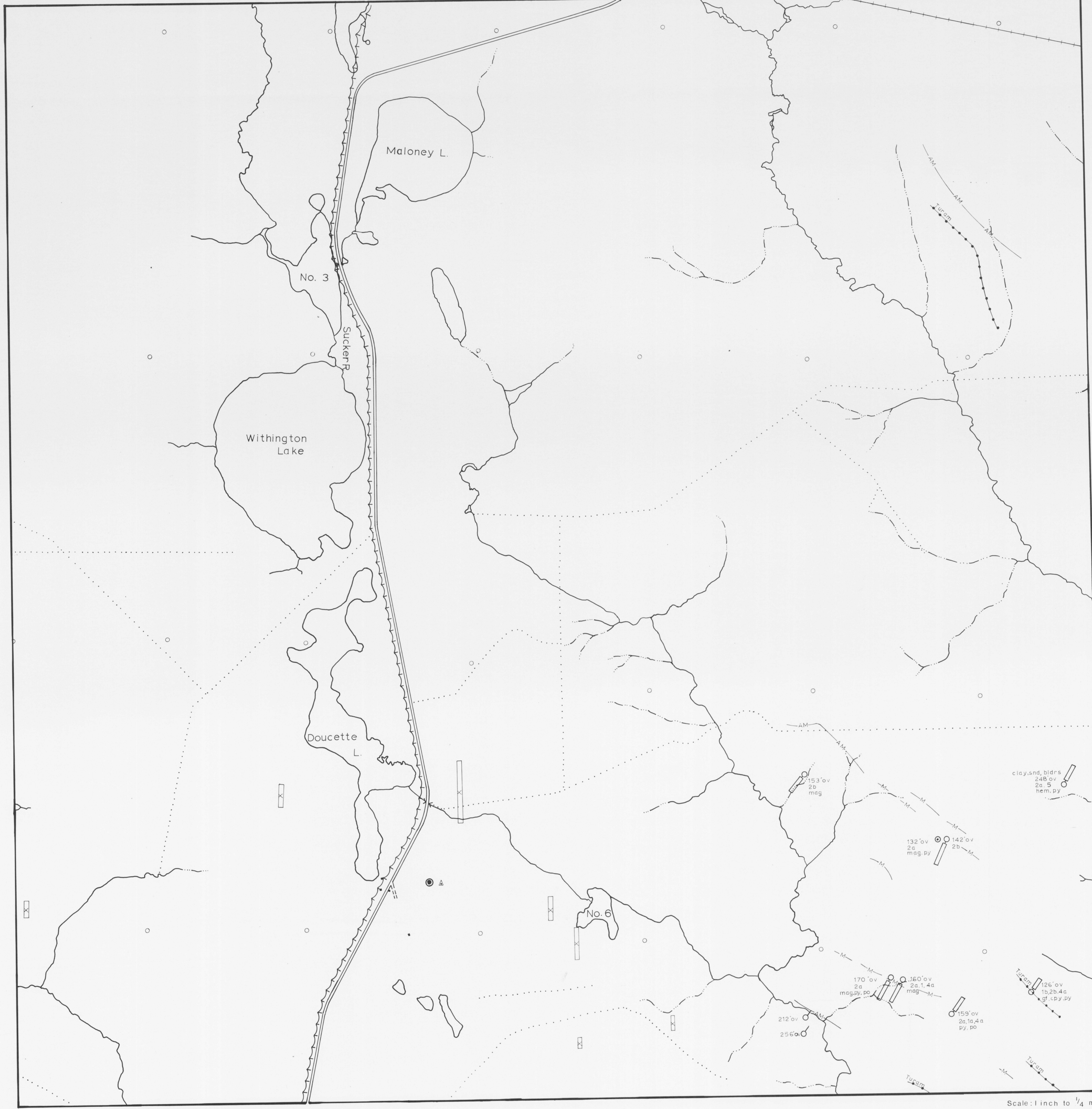
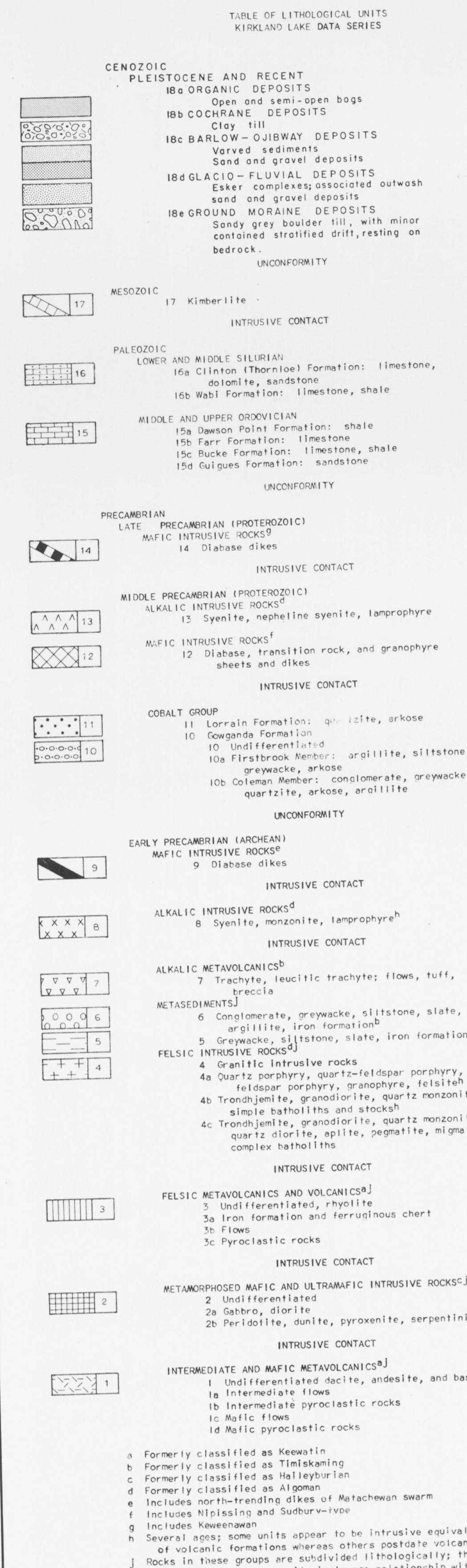
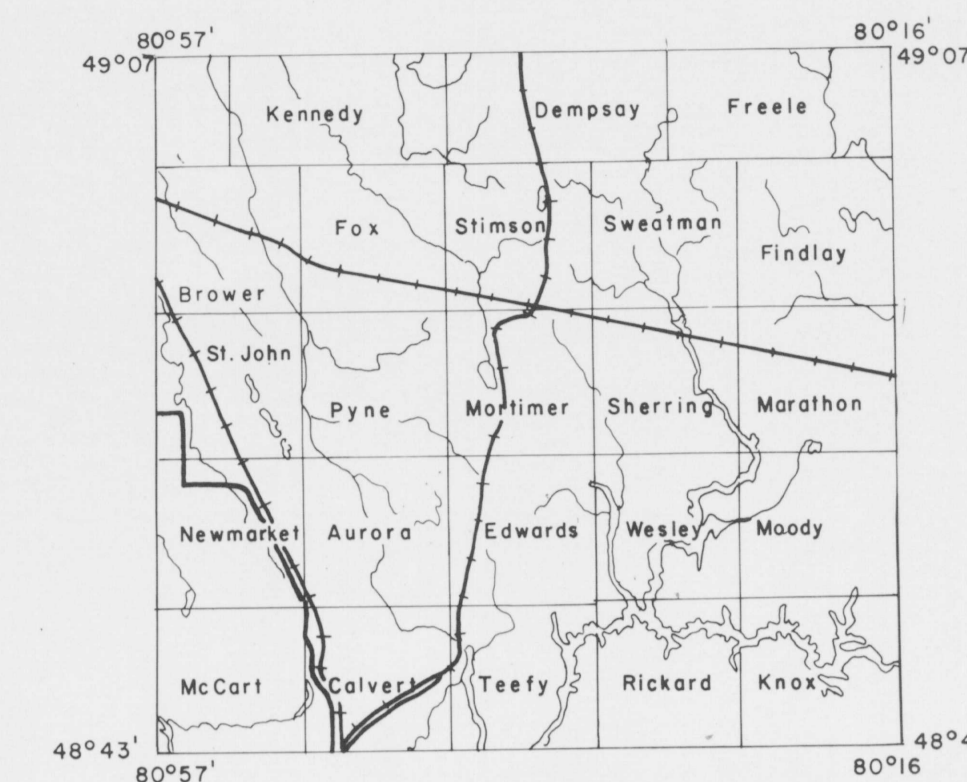


MORTIMER TOWNSHIP
DISTRICT OF COCHRANE, ONTARIO

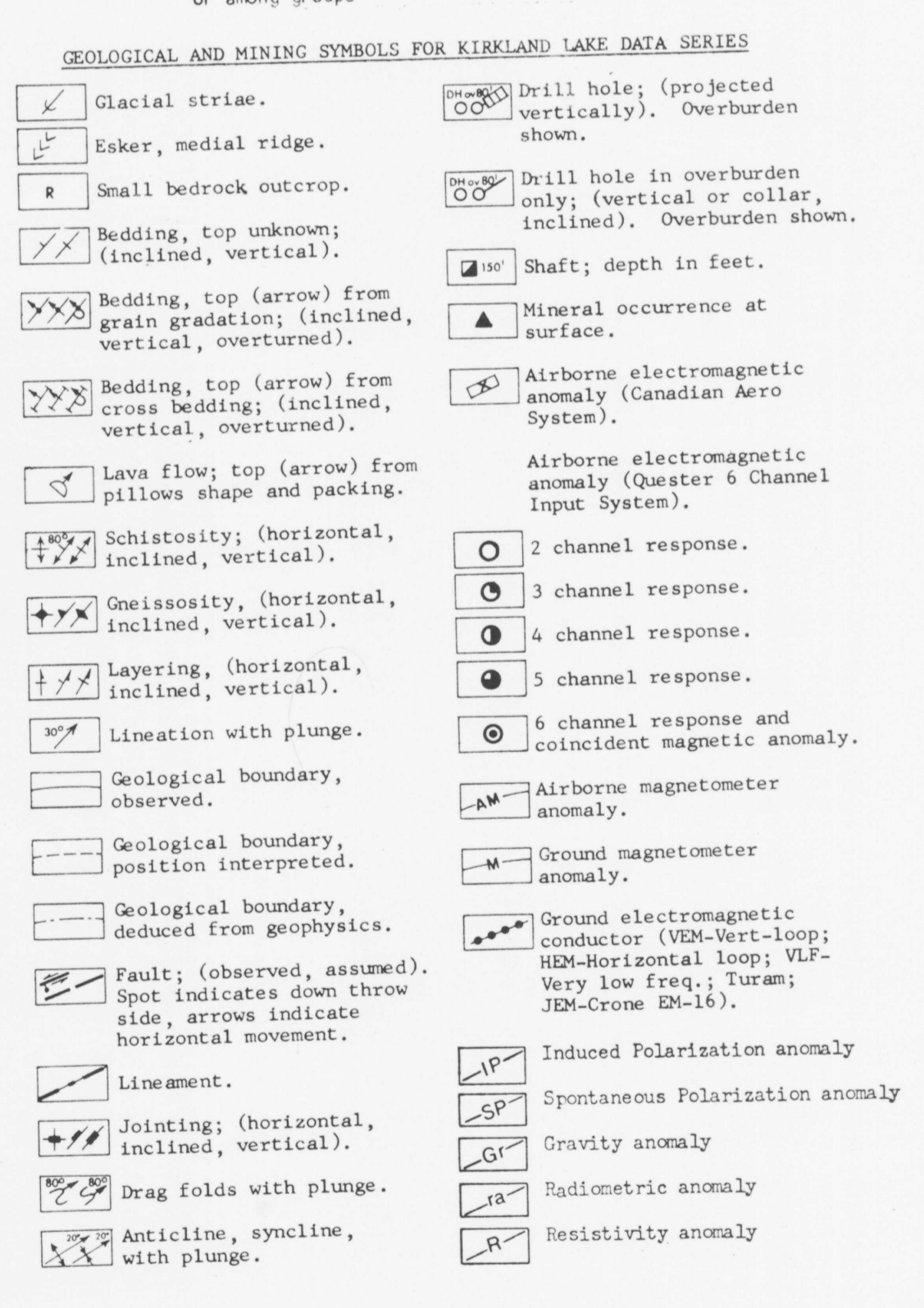
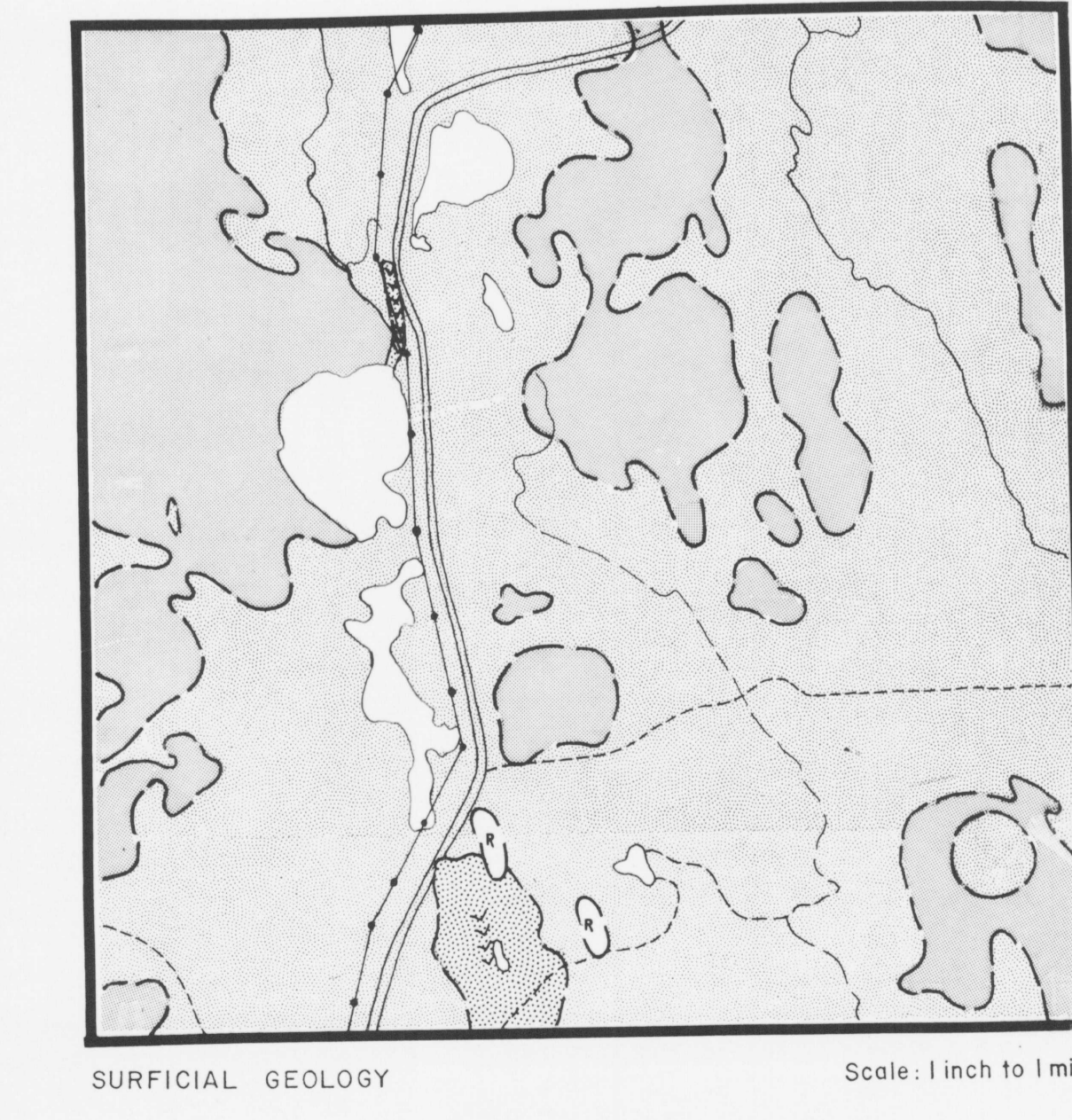
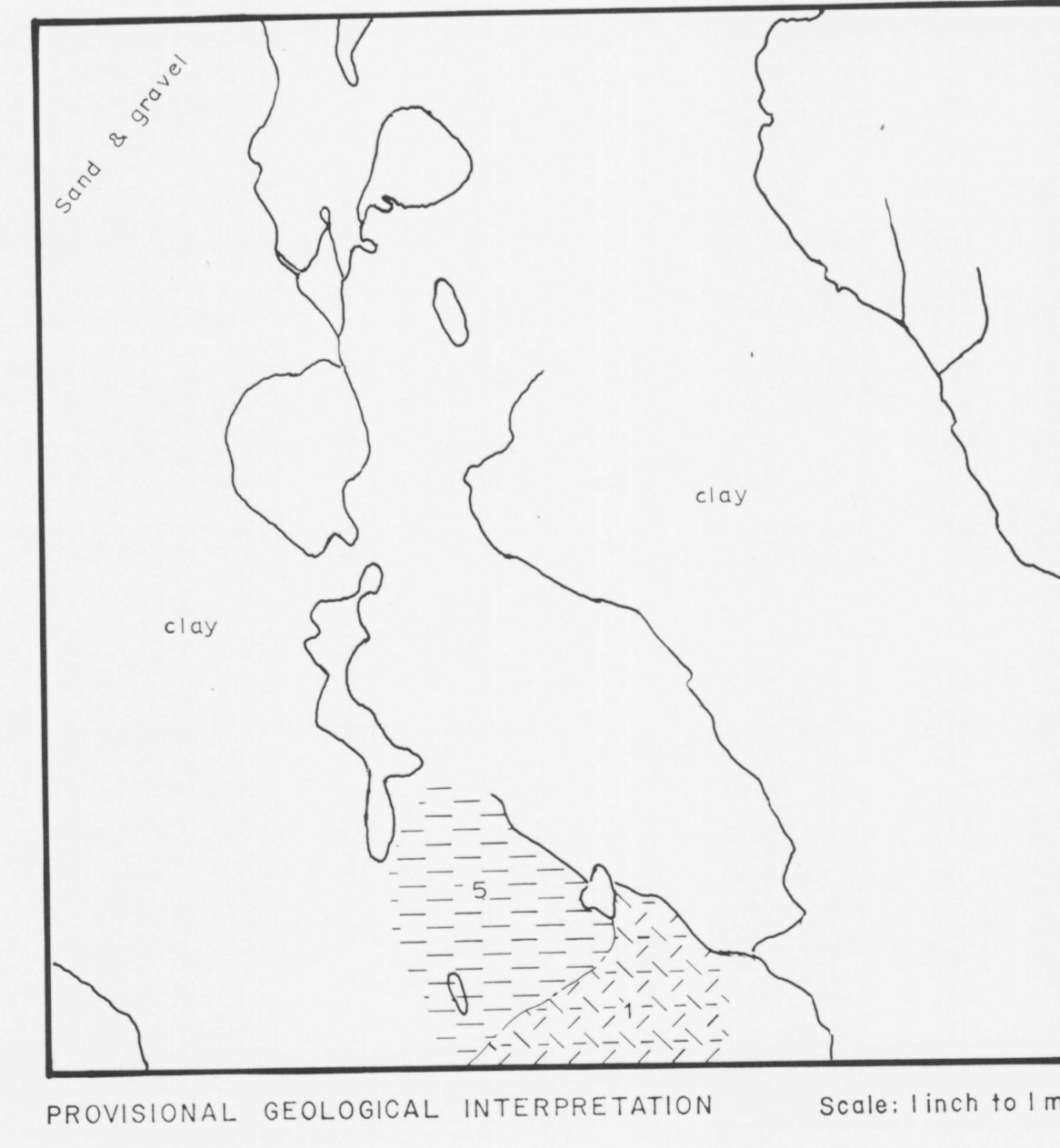
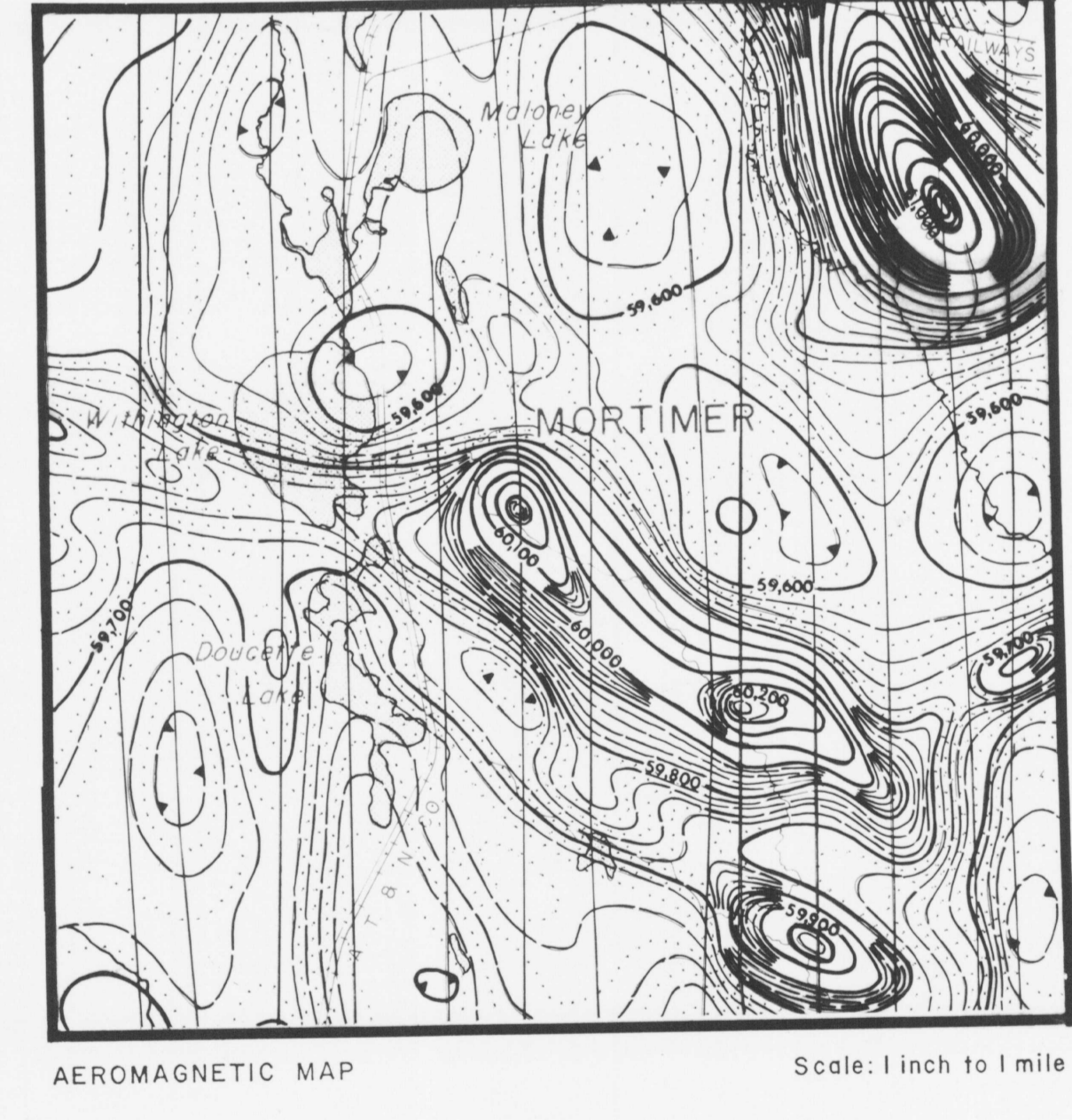
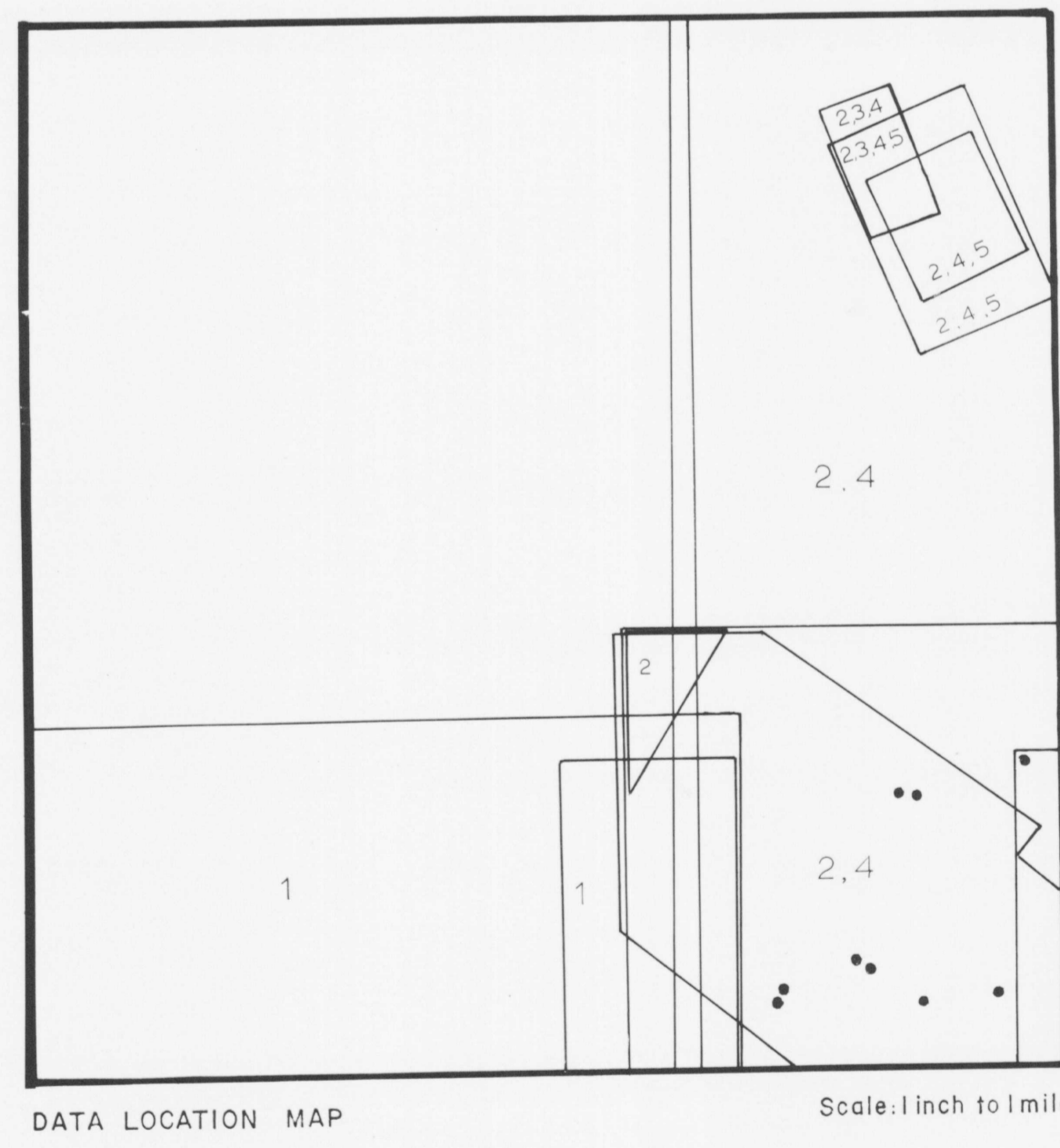


Scale: 1 inch to 1/4 mile

DATA FILED WITH THE ONTARIO DEPARTMENT OF MINES AND NORTHERN AFFAIRS AND NORTHERN AFFAIRS RESIDENT GEOLOGIST AT KIRKLAND LAKE Through February 1972

	GEOLOGICAL	DIAMOND DRILLING	AIRBORNE MAGNETOMETER	AIRBORNE ELECTROMAGNETOMETER	GROUND MAGNETOMETER	VERTICAL LOOP ELECTROMAGNETOMETER	HORIZONTAL LOOP ELECTROMAGNETOMETER	TURAM ELECTROMAGNETOMETER	EM	INDUCED POLARIZATION	VLF	RESISTIVITY	GRAVITY	GEOCHEMICAL	OTHERS
1. Canadian Jewelling Ltd. "J-13"		64	64	64											
2. Glen Lake Silver Mines Ltd.		64	64												
3. Mustang River Mines															
4. North American Rare Metals Ltd.			62	62											
5. Stimson Syndicate					63										

Note: The numbers on the above list stand for the year when the work was done, e.g., 66 for 1966. On the accompanying DATA LOCATION MAP only areas for which work was submitted to the Department are outlined and thus a company may hold more ground than indicated here. The numbers on the DATA LOCATION MAP and any circled numbers refer to the company list above.



METAL AND MINERAL REFERENCE
For Kirkland Lake Data Series

Ag Silver	mo Molybdenite
amb Asbestos	ni Nickel
au Gold	pb Lead
cd Cadmium	pcnt Pentlandite
co Cobalt	pcnt Pentlandite
cp Chalcopyrite	pl Platinus
cr Chromite	py Pyrite
cu Copper	qv Quartz-carbonate vein
ep Epidote	qv Quartz vein
fe Iron	serp Serpentine
fl Fluorite	shar Sphalerite
gf Graphite	sp Specularite
gn Galena	talc Talc
mag Magnetite	zinc Zinc
mar Marcasite	
ml Millerite	

Sources of Information
Compiled by the Geological Survey of Canada in co-operation with the Ontario Department of Mines and Northern Affairs from data on file with the Resident Geologist (Ontario Department of Mines and Northern Affairs), Kirkland Lake.

WTS Reference L2 A/15
GSM-500 Aeromagnetic Map 2370
GSM Geophysical Correlation Series Map 2046
GSM Preliminary Geomagnetic Map F-100
GSM Preliminary Geomagnetic Map F-101
GSM Vertical Geology Map 46-395