

GEOLOGICAL SURVEY OF CANADA  
DEPARTMENT OF ENERGY, MINES AND RESOURCES

LEGEND

NOTE: Areas not designated as one of these units comprise undifferentiated drift or thin undifferentiated drift on rock.

- A Alluvium and low terraces; flood plains, fans, deltas - mainly sand, gravel and silt
- Cx Colluvial complex: colluvium, bedrock, talus, slope deposits
- E Eolian: dunes, mainly sand
- L Lacustrine deposits, extensive organic deposits, areas of thermokarst lakes, generally underlain by silt, sand and clay or peat
- To High terraces and outwash trains; dominantly sand and gravel
- Tk Kettled terraces and outwash trains; dominantly sand and gravel
- H Hummocky gravel
- Mt Hummocky terrain; mainly till but locally and in part gravel
- Mx Moraine complex; transverse ridges and hummocks, mainly till but in part and locally gravel
- R Areas of thin and patchy drift, rock outcrop and soliflucted uplands

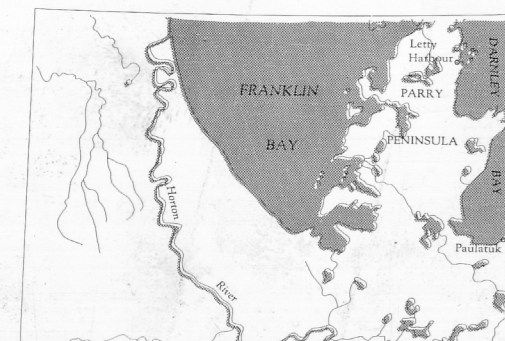
- Buried or filled valley . . . . .
- Abandoned or misfit channel . . . . .
- Esker . . . . .
- Glacial grooving and drumlinoid trend . . . . .
- Moraine ridge . . . . .
- Prominent escarpment . . . . .
- Beach ridge . . . . .

Geology by R. W. Klassen

OPEN FILE  
48  
JAN 1971  
GEOLOGICAL SURVEY  
OTTAWA

This map has been reprinted from a scanned version of the original map. Reproduction par numérisation d'une carte sur papier.

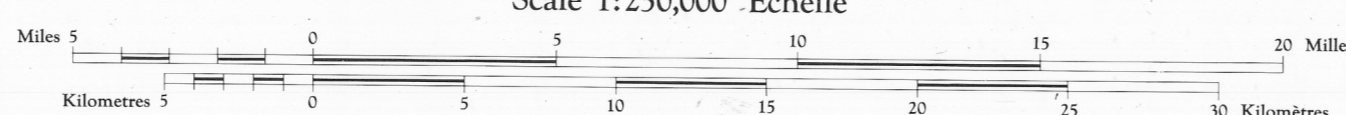
THE DECLINATION OF THE COMPASS NEEDLE 1962  
DECLINAISON MAGNETIQUE EN 1962



The declination of the compass needle is decreasing at 9.9 minutes annually.  
La déclinaison magnétique décroît de 9.9 minutes annuellement.

Compiled 1960-61 by the ARMY SURVEY ESTABLISHMENT, R.C.B., from air photographs taken in 1954.  
Printed 1962.  
Copies may be obtained from the Map Distribution Office, Department of Mines and Technical Surveys, Ottawa.

SURFICIAL GEOLOGY  
FRANKLIN BAY  
DISTRICT OF MACKENZIE  
NORTHWEST TERRITORIES  
Scale 1:250,000 Échelle

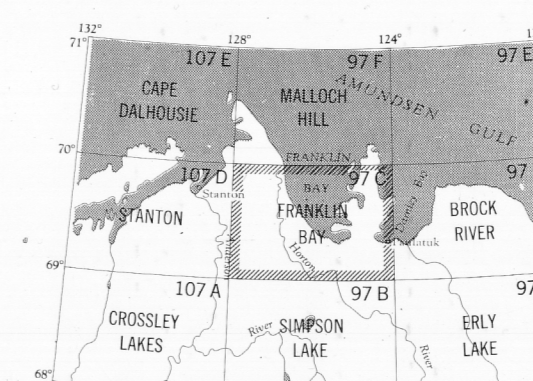


Transverse Mercator Projection  
North American Datum 1927 (1954)  
Contour Interval 100 feet  
Elevations in feet above Mean Sea Level

Projection transverse de Mercator  
Réseau géodésique nord-américain unifié 1927 (1954)  
Équidistance des courbes: 100 pieds  
Élévations en pieds au-dessus du niveau moyen de la mer

Compilée en 1960-61 par le SERVICE TOPOGRAPHIQUE DE L'ARMÉE (G.R.C.) à partir des photographies aériennes prises en 1954.  
Imprimées en 1962.  
Ces cartes sont en vente au Bureau de distribution des cartes, ministère des Mines et des Revenus techniques, Ottawa.

- Building . . . . .
- Post office . . . . .
- Church . . . . .
- School . . . . .
- Astronomical monument . . . . .
- R.C.M.P. Detachment . . . . .
- Horizontal control point . . . . .
- Landing ground . . . . .
- Intermittent stream, "Cours d'eau intermittent" . . . . .
- Intermittent lake . . . . .
- Rapids, falls . . . . .
- Mud or swamp . . . . .
- Moraine in channel . . . . .
- Shingle bars . . . . .
- Icefield or Glacier, "Champ de glace ou glacier" . . . . .
- Fundus Polignus . . . . .
- Fundus . . . . .
- Iceberg . . . . .



Index to adjoining maps of the National Topographic System  
Tableau d'assemblage du Système National de Référence Cartographique

FRANKLIN BAY  
97C  
EDITION 1