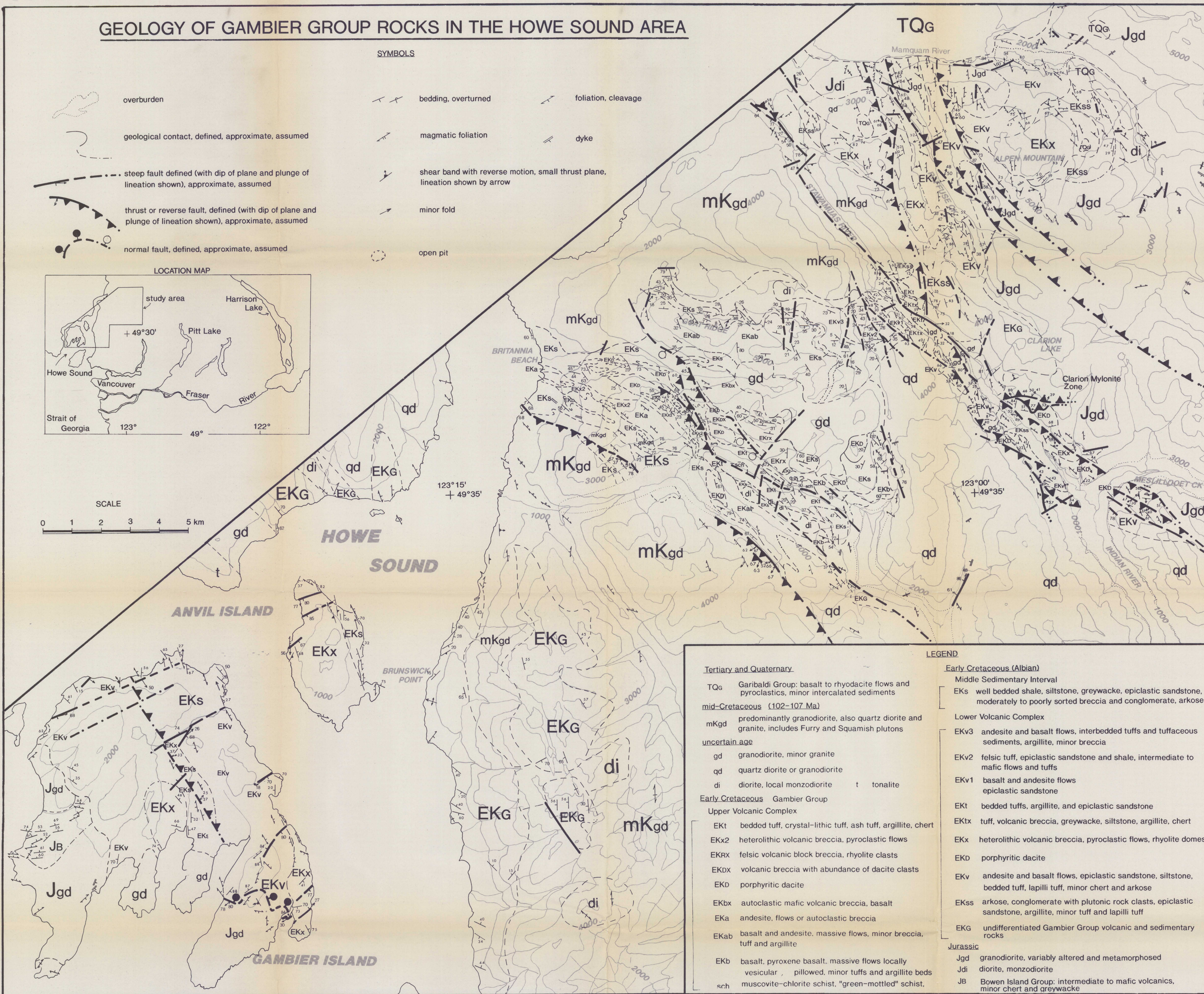
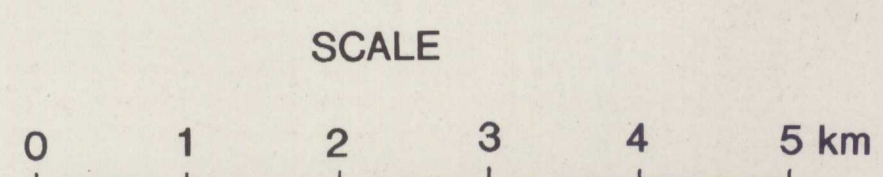
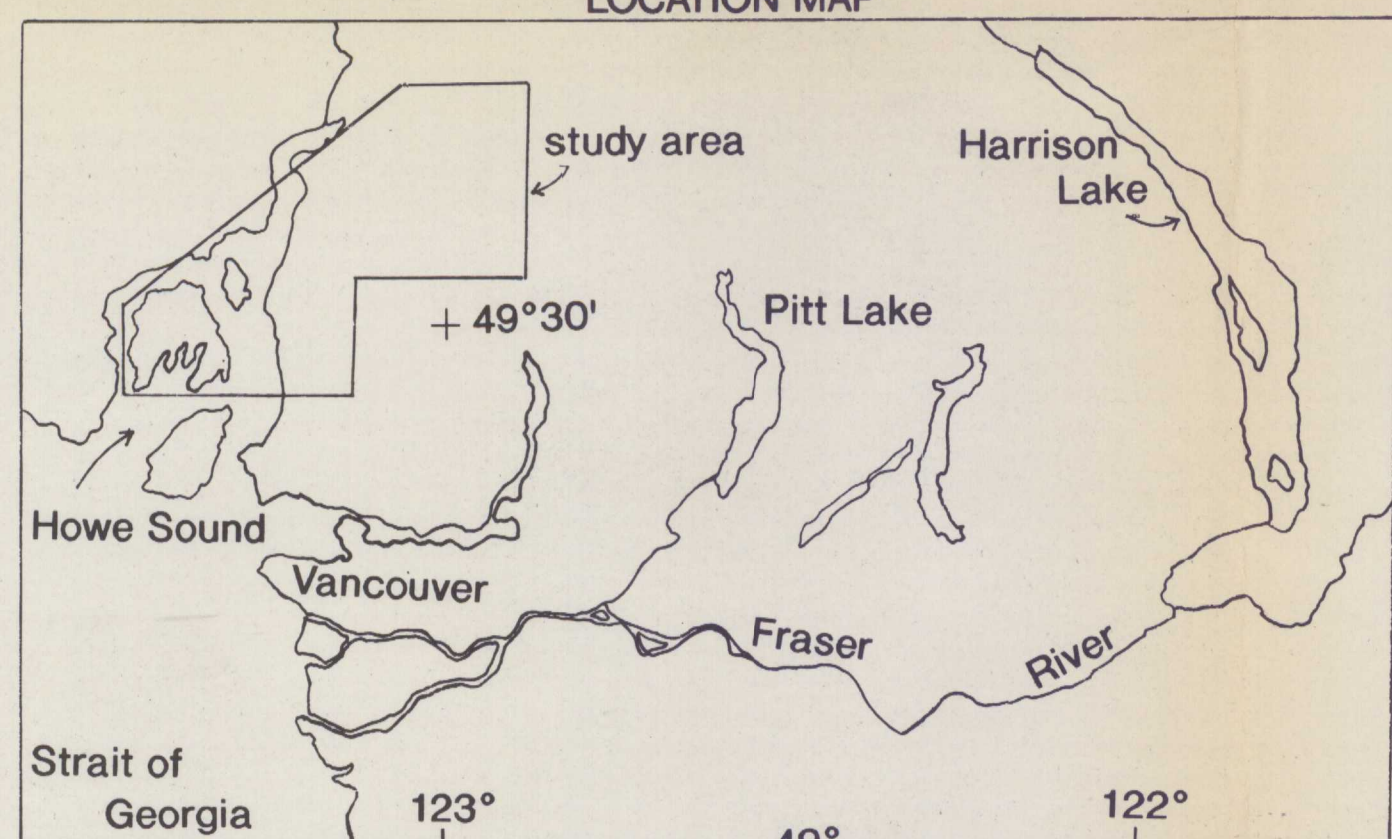


GEOLOGY OF GAMBIER GROUP ROCKS IN THE HOWE SOUND AREA

SYMBOLS

- | | | |
|--|--|--|
| | | |
| | | |
| | | |
| | | |
| | | |

LOCATION MAP



LEGEND

Tertiary and Quaternary

- TQg Garibaldi Group: basalt to rhyodacite flows and pyroclastics, minor intercalated sediments
- mid-Cretaceous (102-107 Ma)
- mKgd predominantly granodiorite, also quartz diorite and granite, includes Furry and Squamish plutons
- uncertain age
- gd granodiorite, minor granite
- qd quartz diorite or granodiorite
- di diorite, local monzodiorite t tonalite

Early Cretaceous Gambier Group

- Upper Volcanic Complex
- EK1 bedded tuff, crystal-lithic tuff, ash tuff, argillite, chert
- EKx2 heterolithic volcanic breccia, pyroclastic flows
- EKRX felsic volcanic block breccia, rhyolite clasts
- EKDX volcanic breccia with abundance of dacite clasts
- EKD porphyritic dacite
- EKbx autoclastic mafic volcanic breccia, basalt
- EKa andesite, flows or autoclastic breccia
- EKab basalt and andesite, massive flows, minor breccia, tuff and argillite
- EKb basalt, pyroxene basalt, massive flows locally vesicular, pillowed, minor tuffs and argillite beds
- sch muscovite-chlorite schist, "green-mottled" schist.

Early Cretaceous (Albian)

- Middle Sedimentary Interval
- EKs well bedded shale, siltstone, greywacke, epiclastic sandstone, moderately to poorly sorted breccia and conglomerate, arkose
- Lower Volcanic Complex
- EKv3 andesite and basalt flows, interbedded tuffs and tuffaceous sediments, argillite, minor breccia
- EKv2 felsic tuff, epiclastic sandstone and shale, intermediate to mafic flows and tuffs
- EKv1 basalt and andesite flows
- epiclastic sandstone
- EKt bedded tuffs, argillite, and epiclastic sandstone
- EKtx tuff, volcanic breccia, greywacke, siltstone, argillite, chert
- EKx heterolithic volcanic breccia, pyroclastic flows, rhyolite domes
- EKD porphyritic dacite
- EKv andesite and basalt flows, epiclastic sandstone, siltstone, bedded tuff, lapilli tuff, minor chert and arkose
- EKss arkose, conglomerate with plutonic rock clasts, epiclastic sandstone, argillite, minor tuff and lapilli tuff
- EKG undifferentiated Gambier Group volcanic and sedimentary rocks

Jurassic

- Jgd granodiorite, variably altered and metamorphosed
- Jdi diorite, monzodiorite
- JB Bowen Island Group: intermediate to mafic volcanics, minor chert and greywacke

Map produced by J.V.G. Lynch from data collected during 1990 field season, and compiled from references listed below:

Armstrong, J.E.
 1953: Preliminary map, Vancouver North, British Columbia; Geological Survey of Canada, Paper 53-28, 7 pages.

Bostock, H.S.
 1963: Squamish Map-area; Geological Survey of Canada, Map 42-1963.

Heah, T.S.T.
 1982: Stratigraphy, Geochemistry, and Geochronology of the Lower Cretaceous Gambier Group, Sky Pilot Area, southwestern British Columbia; unpublished BSc. thesis, University of British Columbia, Vancouver, 97 p.

James, H.T.
 1929: Britannia Beach map-area, British Columbia; Geological Survey of Canada, Memoir 158, 139 p.

McColl, K.M.
 1987: Geology of Britannia Ridge, east section, southwest British Columbia; unpublished MSc. thesis, University of British Columbia, Vancouver, 207 p.

McKillop, G.R.
 1973: Geology of southwestern Gambier Island; unpublished BSc. thesis, University of British Columbia, Vancouver.

Payne, J.G., Bratt, J.A., and Stone, B.G.
 1980: Deformed Mesozoic volcanogenic Cu-Zn sulphide deposits in the Britannia district, British Columbia; Economic Geology, v. 75, p. 700-721.

Roddick, J.A.
 1965: Vancouver North, Coquitlam and Pitt Lake map-areas, British Columbia; Geological Survey of Canada, Memoir 335, 276 p.

Roddick, J.A., and Woodsworth, G.J.
 1979: Geology of Vancouver west half and mainland part of Alberni; Geological Survey of Canada, open file 611.

Reddy, D.G.
 1989: Geology of the Indian River Area; unpublished MSc. thesis, University of British Columbia, Vancouver, 166 pages.