

134° 00' 133° 30' 133° 00' 132° 30' 132° 00'

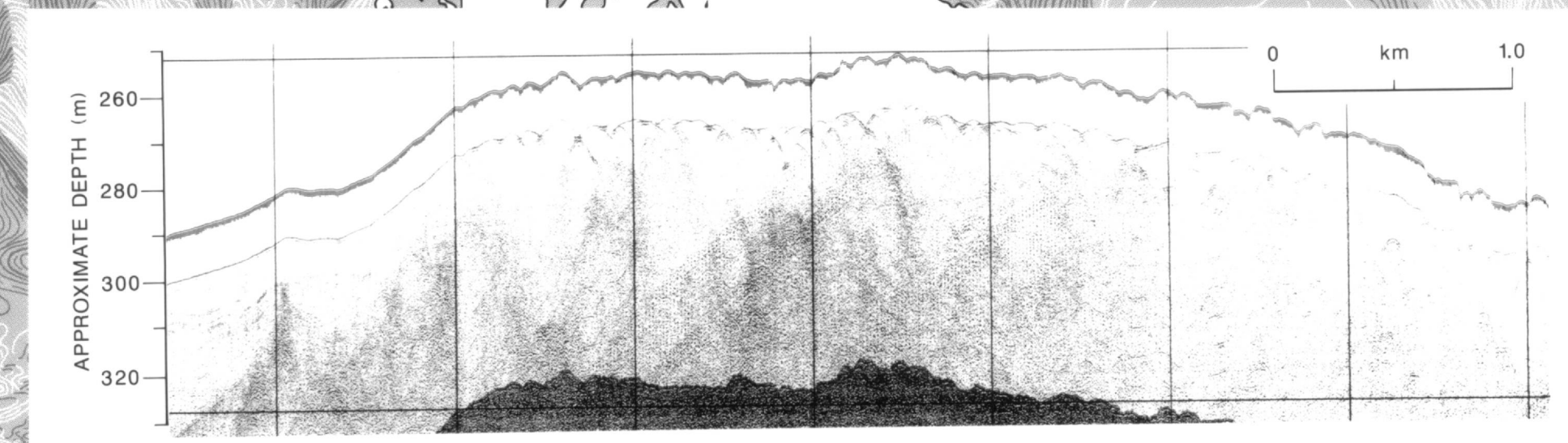
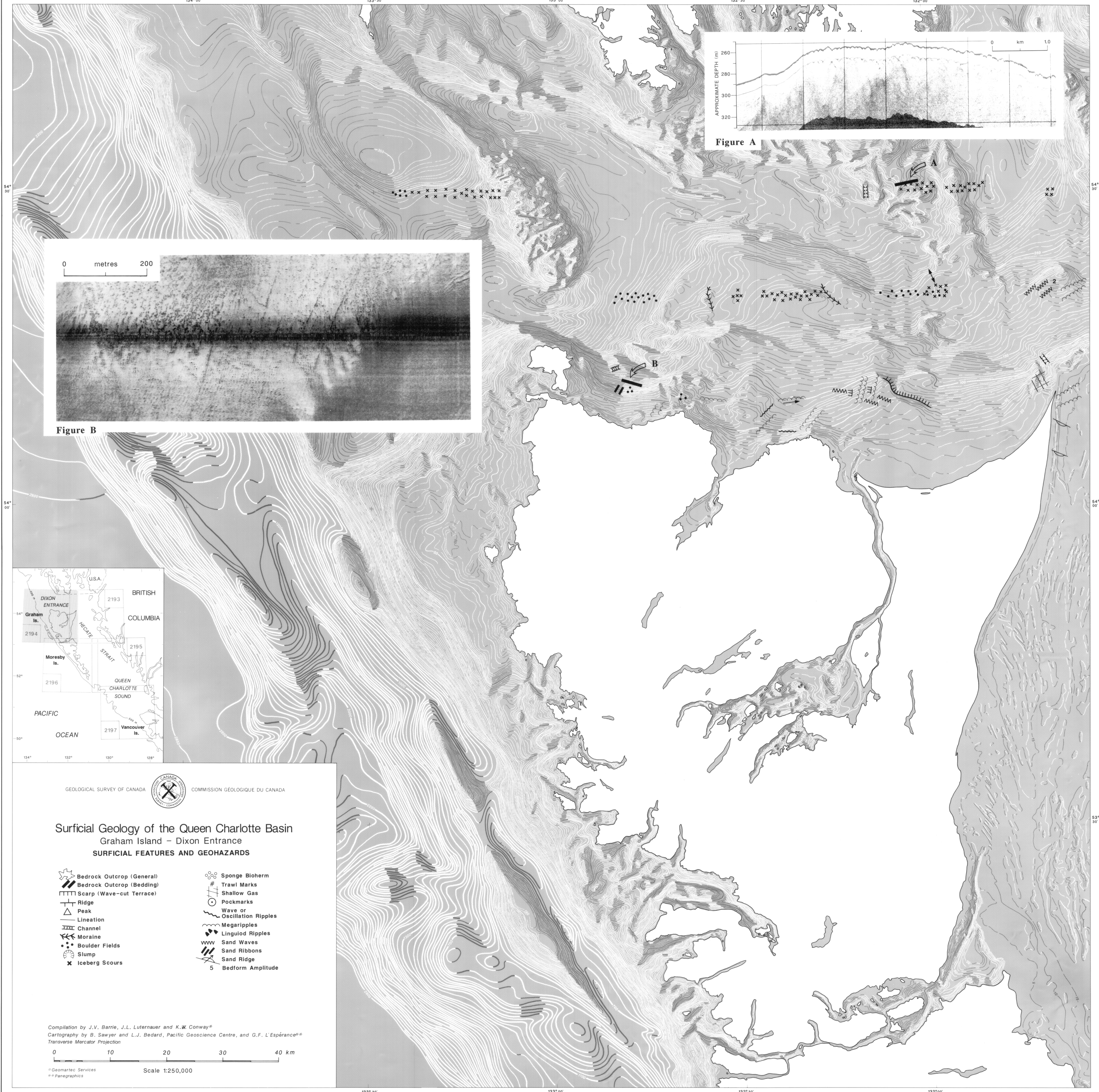


Figure A

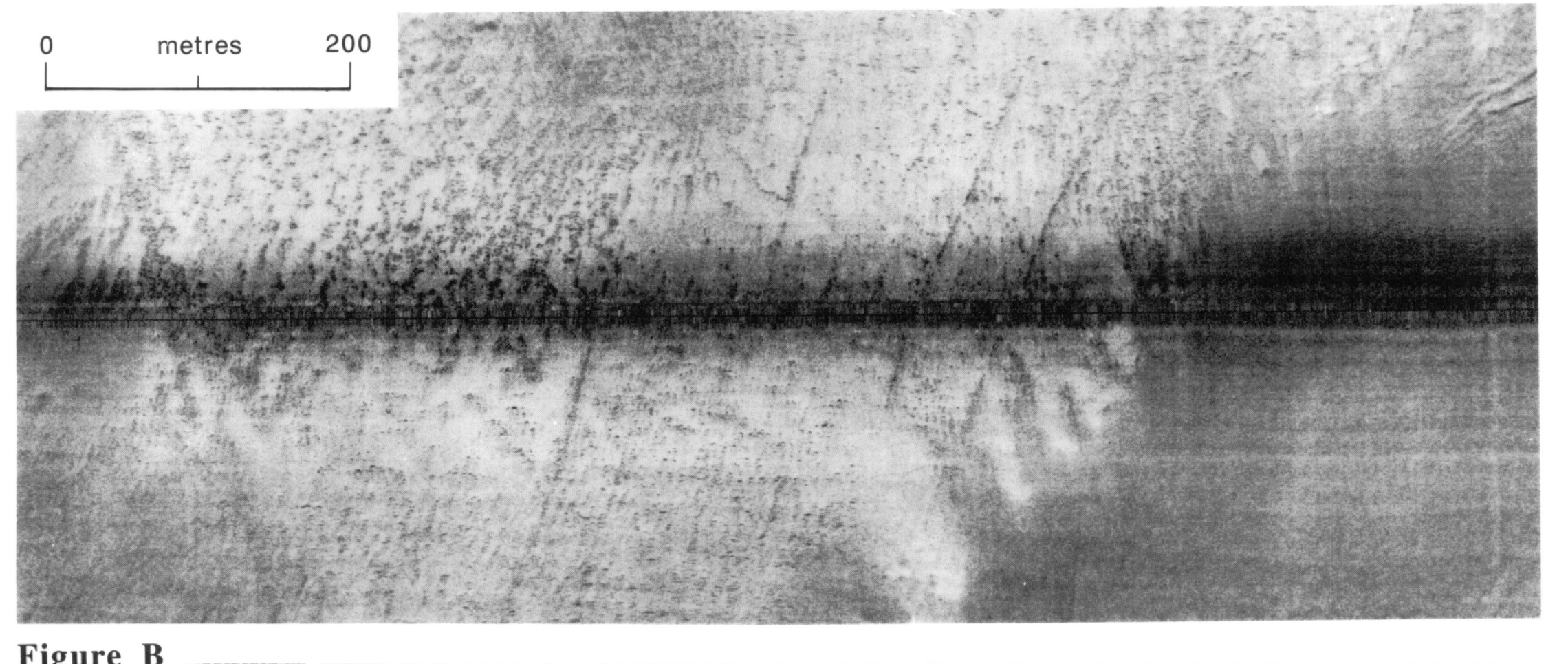
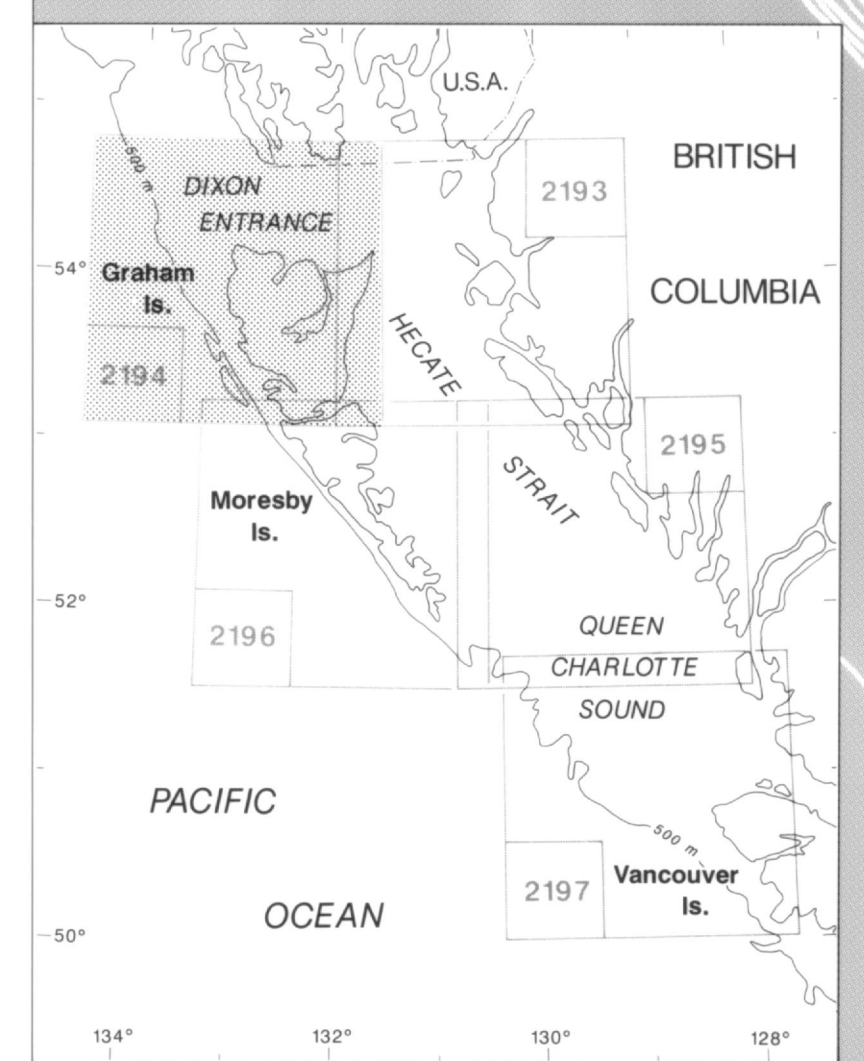


Figure B

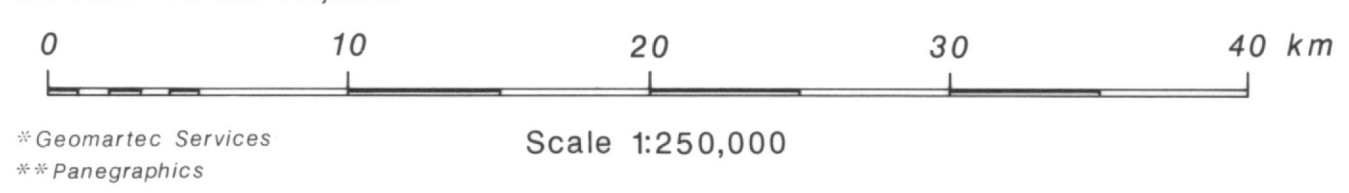


GEOLOGICAL SURVEY OF CANADA / COMMISSION GÉOLOGIQUE DU CANADA

**Surficial Geology of the Queen Charlotte Basin
Graham Island - Dixon Entrance
SURFICIAL FEATURES AND GEOHAZARDS**

- | | | | | | | | | | | |
|--|--|--|--|--|--|--|--|--|--|--|
| | | | | | | | | | | |
| | | | | | | | | | | |

Compilation by J.V. Barrie, J.L. Luternauer and K.W. Conway*
Cartography by B. Sawyer and L.J. Bedard, Pacific Geoscience Centre, and G.F. L'Espérance**
Transverse Mercator Projection



*Geomatic Services
**Panographics
Scale 1:250,000

133° 30' 133° 00' 132° 30' 132° 00'