

LEGEND

Coloured legend blocks indicate map units that appear on this map

SURFICIAL DEPOSITS QUATERNARY

NONGLACIAL ENVIRONMENT

- 8 LACUSTRINE DEPOSITS: sand, muddy sand and pebbly sand; up to 2 m thick; occurs as sloping or gently undulating plain; nearshore sediments associated with modern lakes
- 7 ORGANIC DEPOSITS: lichen-moss, sedge, and woody peat; 1.5 to 3 m thick; may occur at or up to 3 m above the water table; includes both bog peat and fen peat. Peat mantles most geological features
- 6 ALLUVIAL DEPOSITS: silt, sand and rounded gravel, commonly terraced; thicknesses range from a thin veneer up to 30 m; deposited by streams within active drainage systems since the retreat of the sea, proglacial lakes, or glacial ice as floodplains, spits, point bars, and deltas

HOLOCENE

NONGLACIAL AND GLACIAL ENVIRONMENT

- 5b MARINE/GLACIOMARINE DEPOSITS: well sorted, stratified sand to stony silt deposited in Tyrell Sea, and glacial deposits modified by marine processes during offlap; commonly overlain by peat
- 5a Nearshore sediments: well sorted silt, sand, and gravel, up to 3 m thick; occurs as a series of ridges in the form of beaches, bars, spits, and ice-pushed ridges, or as a flat plain
- 5a Offshore sediments: poorly sorted clayey silt, stony silt, and sand with pockets of nearshore sand and gravel and windblown sand; probably a till plain levelled by filling of depressions and planation by wave action; thicknesses of up to 2 m near marine limit and increasing towards Hudson Bay to a maximum of 7 m; may contain marine fossils and is commonly overlain by organic materials
- 4d LACUSTRINE/GLACIOLACUSTRINE DEPOSITS: massive to bedded silt-clay with granules, overlain by a veneer of sand. Deposited in glacial Lake Agassiz; where deposits are thin, they mirror the underlying glacial and bedrock structures, and where thick, they form a flat plain
- 4d Littoral sediments: blanket of sand grading basinward into undifferentiated silt and clay
- 4c Nearshore sediment veneer: well sorted sand and gravel; occurs as a ridge or series of ridges with 1 to 4 m of relief on wave washed glaciofluvial deposits pre-dating glacial Lake Agassiz
- 4b Nearshore sediments: well sorted sand and gravel; occurs as a ridge or series of ridges with 1 to 4 m of relief; includes beaches, bars, spits, and ice-pushed ridges
- 4a Offshore sediments: well sorted clay, silt, and sand; thickness ranges from a thin veneer up to 20 m; surface characterized by iceberg scours and extensive areas of peat

LATE PLEISTOCENE

- 3 GLACIOFLUVIAL DEPOSITS: water sorted, stratified sand and gravelly sand deposited in, around, or near a glacier, largely as a result of meltwater flow
- 3 Outwash sediments: well rounded, cross-stratified sands and gravels, 3 to 20 m thick, characterized by braided channels and kettle depressions; occurs along the flanks of eskers or in the bottom of subglacial and proglacial meltwater channels; surfaces are commonly terraced and hummocky
- 2 Ice contact stratified drift: well sorted, poorly stratified sand and gravel kame deposits, 10 to 30 m high, stratified sand and minor gravel esker deposits, 5 to 20 m high, and recessional, end, or interlobate moraines. Kames occur as irregular mounds flanking eskers. Eskers occur as elongate ridges, generally parallel to the direction of ice movement
- 1b GLACIAL DEPOSITS (TILL): poorly sorted debris deposited at the front of or beneath glaciers or under ice shelves. The tills of the western side of the province are sandy to silty sand and have a high percentage of clasts derived from granitic terrain; the tills of the eastern side are generally silty and highly calcareous
- 1b Till blanket: silty to sandy, 1 to 10 m thick; masks most of the bedrock features; surface features include drumlins, fluting, ribbed moraine, and hummocks
- 1a Till veneer: sandy, usually less than 1 m thick, interspersed with areas of thicker till, bedrock, marine or lacustrine sediments. Surface reflects the underlying bedrock structure

BEDROCK PRE-QUATERNARY

- R2 Paleozoic rock: sedimentary carbonate rocks; dolomitic limestone and dolomite
- R1 Precambrian rock: largely massive granitic and gneissic rock with isolated bands of volcanic rock

- Geological boundary
- Small bedrock outcrop
- Striae (ice flow direction known)
- Esker (direction of flow known)
- Beach ridge

Geology by M.P. Stanton and M.D. Clarke, 1986, based on airphoto interpretation with limited ground checking

Thematic information on this map is reproduced directly from author's copy

Any revisions or additional geological information known to the user would be welcomed by the Geological Survey of Canada

Base map at 1:250 000 published by the Surveys and Mapping Branch in 1977.

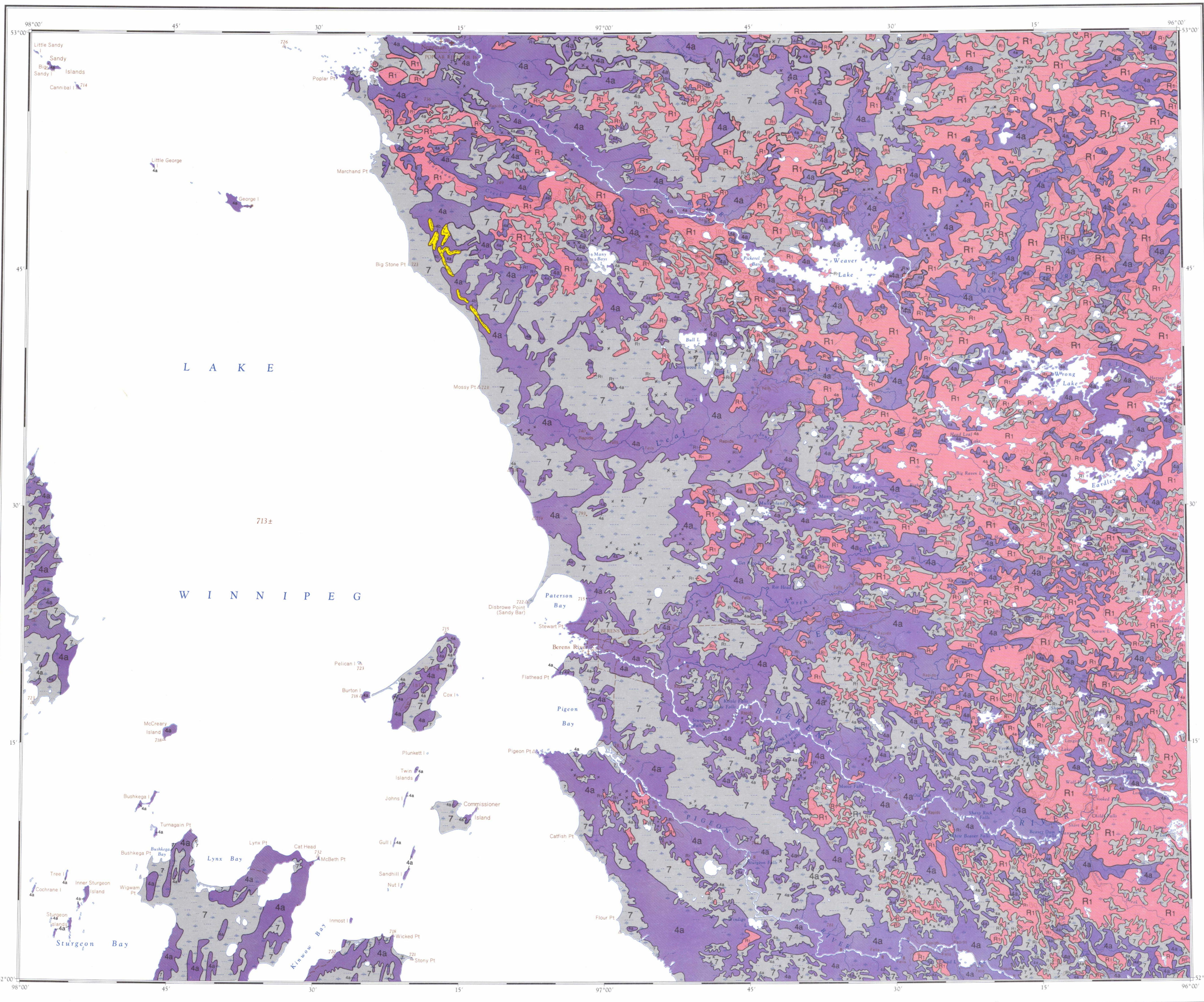
Copies of the topographical edition of this map may be obtained from the Canada Map Office, Department of Energy, Mines and Resources, Ottawa, Ontario, K1A 0E9

Mean magnetic declination 1988: 06°32' East, decreasing 8.9' annually. Readings vary from 07°40' E in the SW corner to 05°21' E in the NE corner of the map

Elevations in feet above mean sea level

Contribution to Canada-Manitoba Mineral Development Agreement 1984-89, a subsidiary agreement under the Economic and Regional Development Agreement. Project funded by the Geological Survey of Canada

Recommended citation: Stanton, M.P. and Clarke, M.D. 1988: Surficial geology, Berens River, Manitoba. Geological Survey of Canada, Map 1685A, scale 1:250 000



Copies of this map may be obtained from the Geological Survey of Canada, 601 Booth Street, Ottawa, Ontario K1A 0E8, 3003-33rd Street, N.W., Calgary, Alberta T2L 2A7

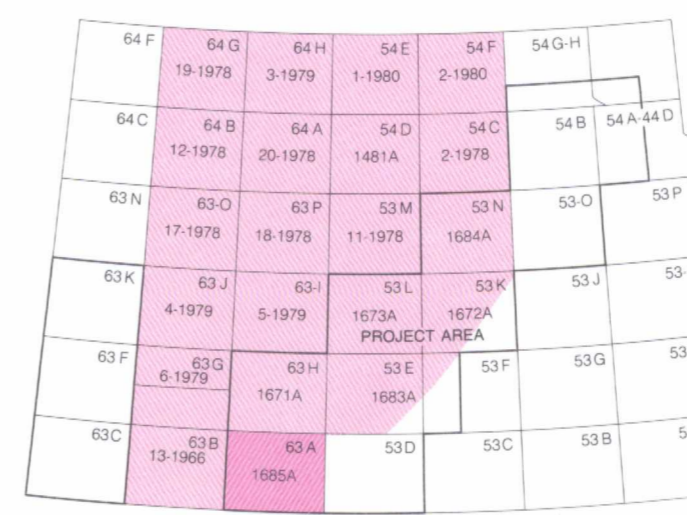


MAP 1685A
SURFICIAL GEOLOGY
BERENS RIVER
MANITOBA

Scale 1:250 000 - Échelle 1/250 000

Kilometres 0 5 10 15 20 Kilomètres

Universal Transverse Mercator Projection / Projection transverse universelle de Mercator
© Crown copyrights reserved / © Droits de la Couronne réservés



MAP LIBRARY / CARTOTHEQUE
LIBRARY / BIBLIOTHÈQUE
NOV 28 1988
GEOLOGICAL SURVEY
COMMISSION GÉOLOGIQUE

NOT TO BE TAKEN FROM LIBRARY
NE PAS SORTIR DE LA BIBLIOTHÈQUE

1685A

