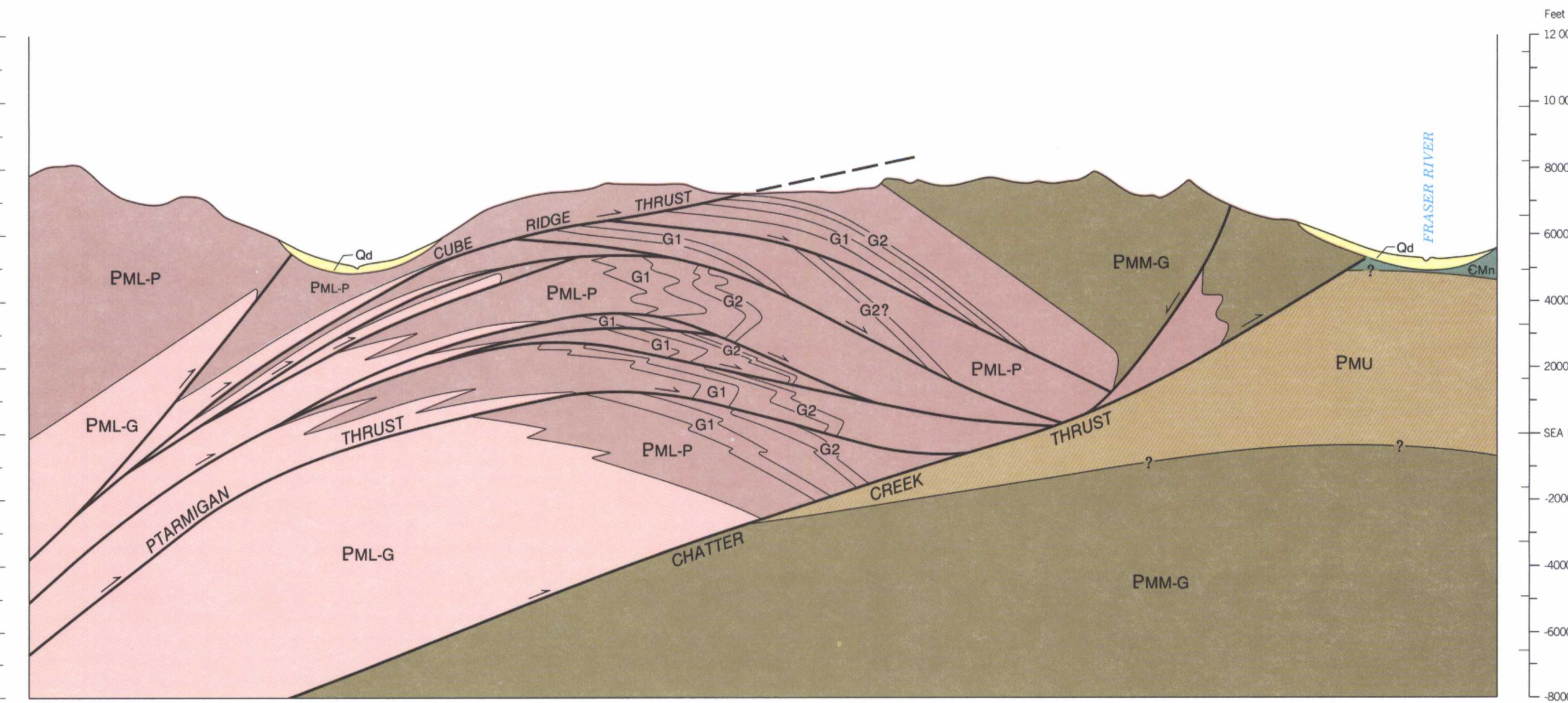
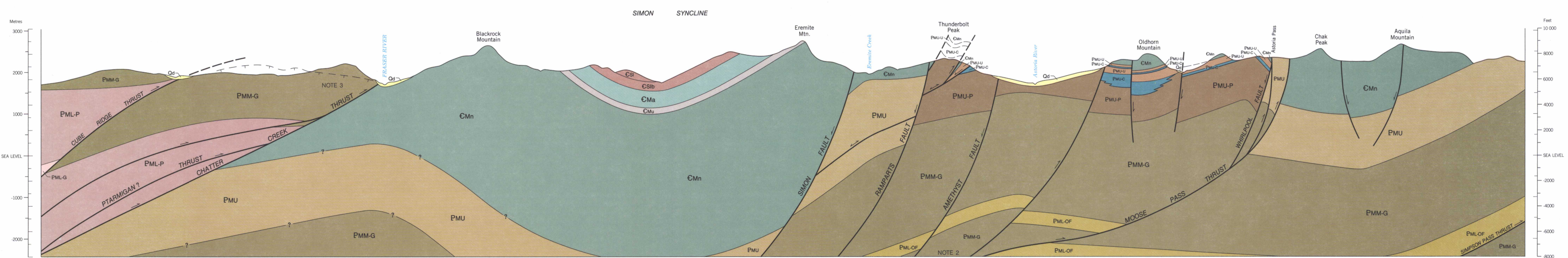


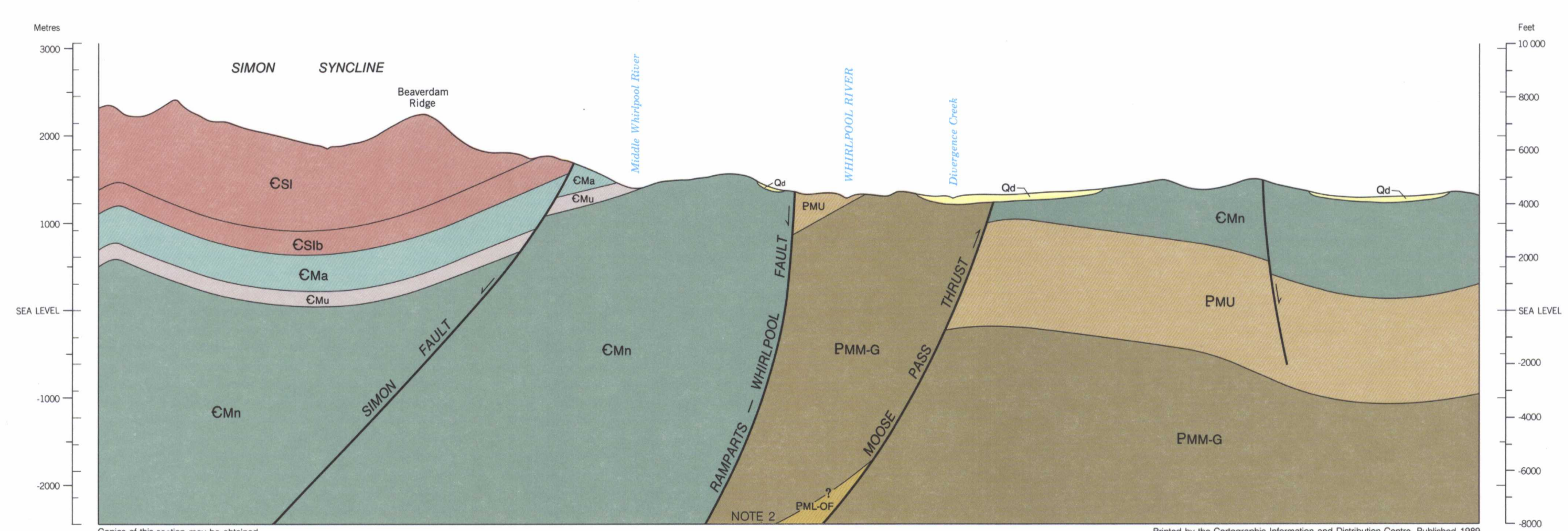
Section 21



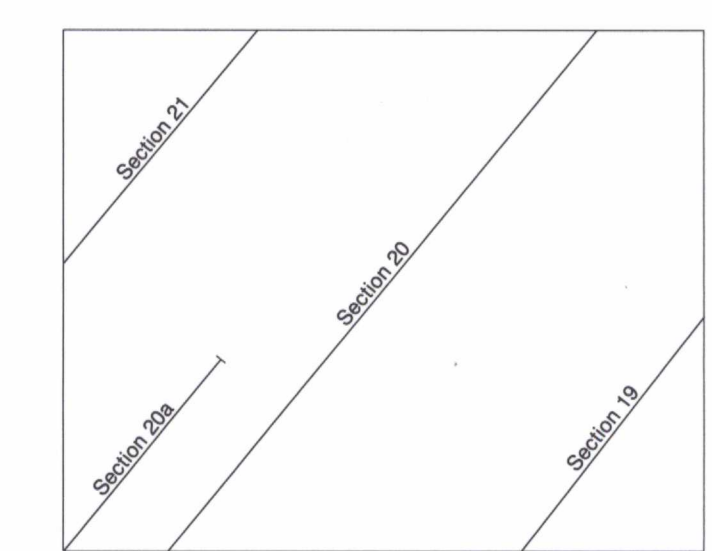
Section 20a



Section 20



Section 19



Relationship of structure sections to Map 1657A, Amethyst Lakes

Structure sections 20, 20a and 21: The Chatter Creek Thrust Fault may represent a late stage more steeply west dipping fault that offsets the Ptarmigan Thrust Zone which would be rooted in the Moose Pass and Simpson Pass Thrust Faults.

Copies of this section may be obtained from the Geological Survey of Canada, 601 Booth Street, Ottawa, Ontario K1A 0E9, 3303 33rd Street, N.W., Calgary, Alberta T2L 2A7, 100 West Pender Street, Vancouver, B.C. V6B 1R6

Printed by the Cartographic Information and Distribution Centre, Published 1989

Diagrammatic structure sections 19, 20, 20a and 21 to accompany Map 1657A, Amethyst Lakes

Scale 1:50 000

Geological drafting by B.H. Orman, Institute of Sedimentary and Petroleum Geology, Geological Survey of Canada

MAP LIBRARY / CARTOTHEQUE

LIBRARY / BIBLIOTHÈQUE
OCT 30 1989
GEOLOGICAL SURVEY
COMMISSION GÉOLOGIQUE

Recommended citation:
Moutjoy, E.W. and Price, R.A.
1988. Structure sections,
Amethyst Lakes,
Alberta - British Columbia;
Geological Survey of Canada,
Map 1657A, Scale 1:50 000

NOT TO BE TAKEN FROM LIBRARY
NE PAS SORTIR DE LA BIBLIOTHÈQUE

1657A 2012

