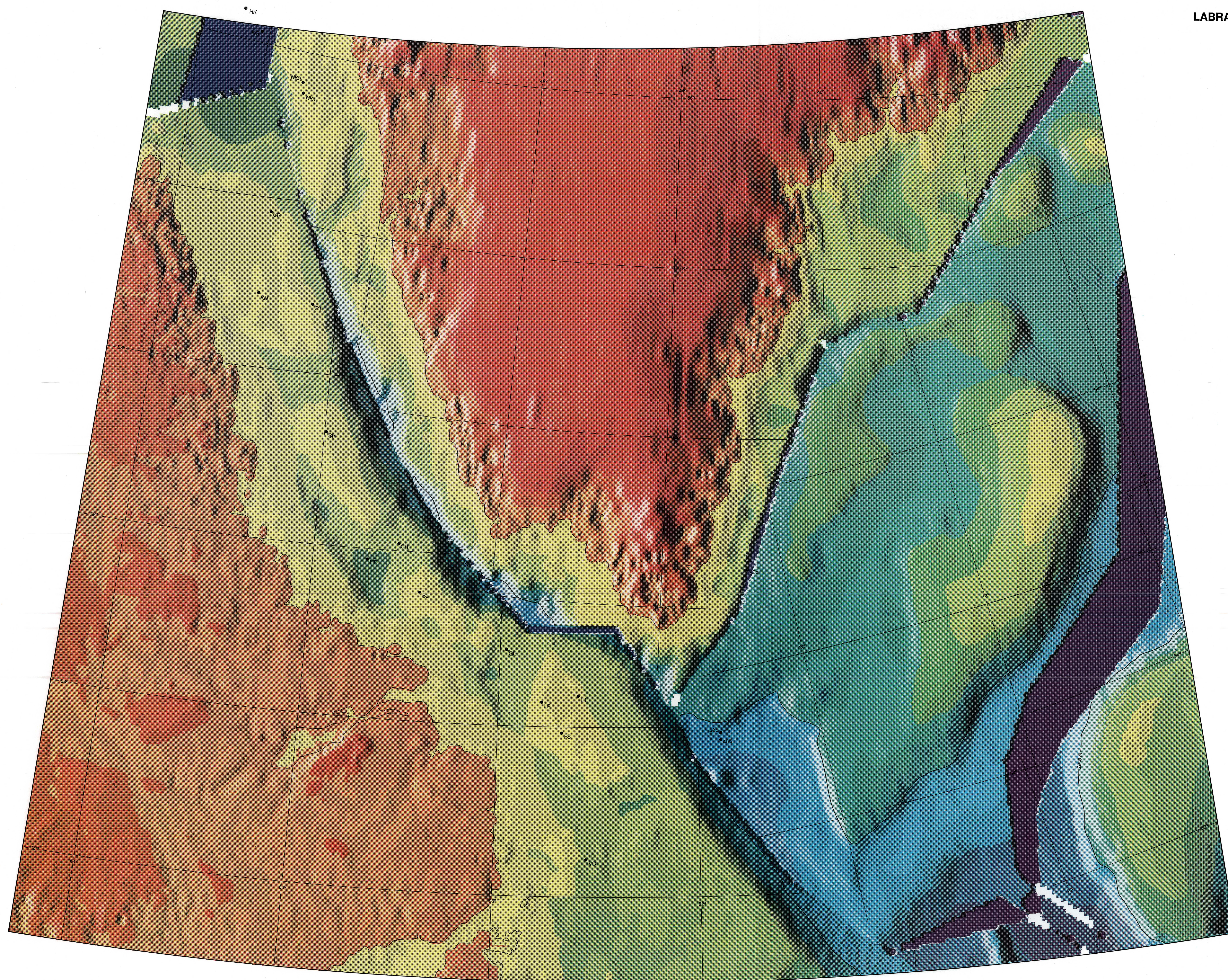


SEAFLOOR SPREADING HISTORY IV
LABRADOR SEA

ÉVOLUTION DES FONDS OCÉANIQUES
MER DU LABRADOR



- EXPLORATORY WELLS AND DSDP HOLES
 PUIITS EXPLORATOIRE ET FOURAGES DSDP
- HK Kekijä
 - KG Kangâmiut
 - NK1 Nukile 1
 - NK2 Nukile 2
 - CB Cabot
 - KN Karlsefni
 - PT Pothurst
 - SR Snorri
 - CR Corte Real
 - HD Hopdale
 - BJ Bjarni
 - GD Gudrid
 - LF Leif
 - IH Indian Harbour
 - FS Freydis
 - VO Verrazano
 - 405 DSDP leg 48
 - 406 DSDP leg 48
 - 555 DSDP leg 81

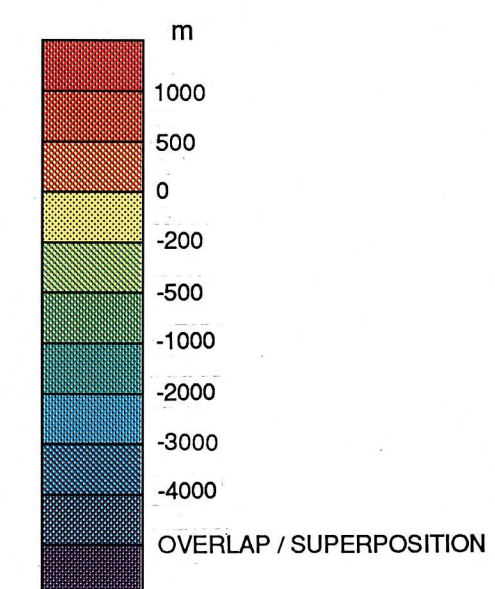


PLATE RECONSTRUCTION, CLOSURE BATHYMETRY
RECONSTRUCTION CINÉMATIQUE, FERMETURE BATHY MÉTRIQUE

This map has been produced from a scanned version of the original map
 Reproduction par numérisation d'une carte sur papier