

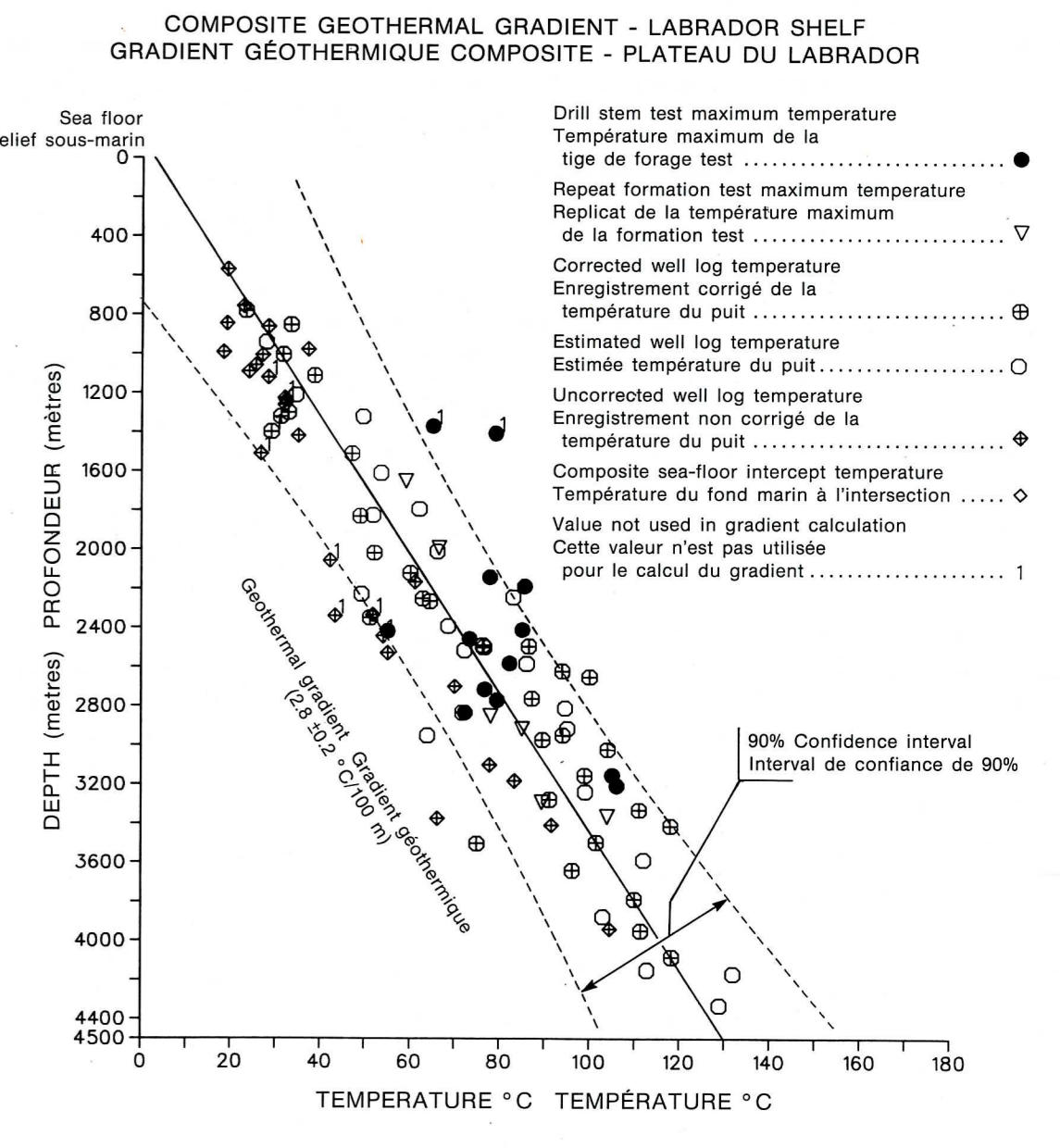
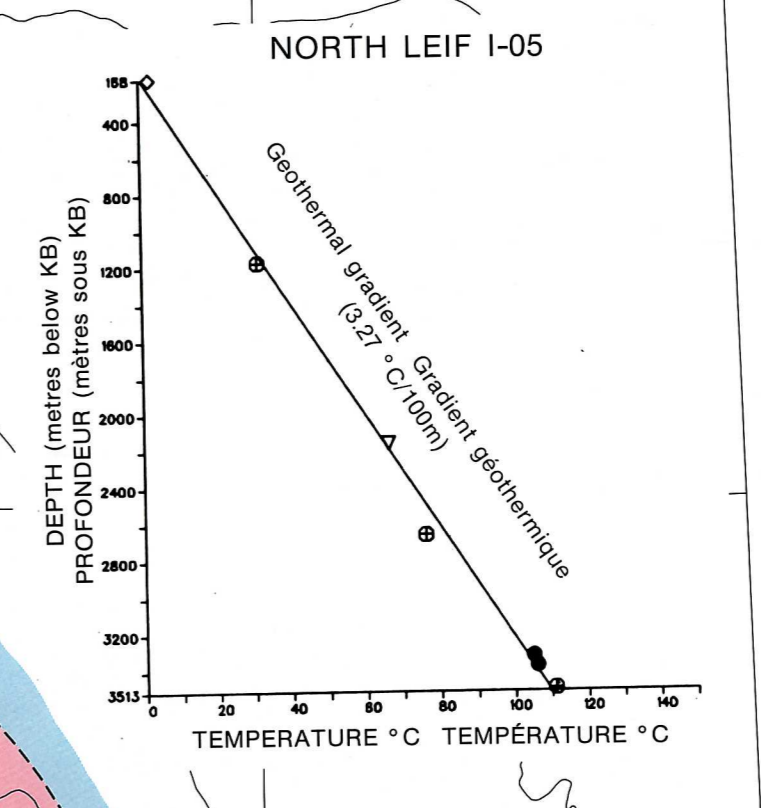
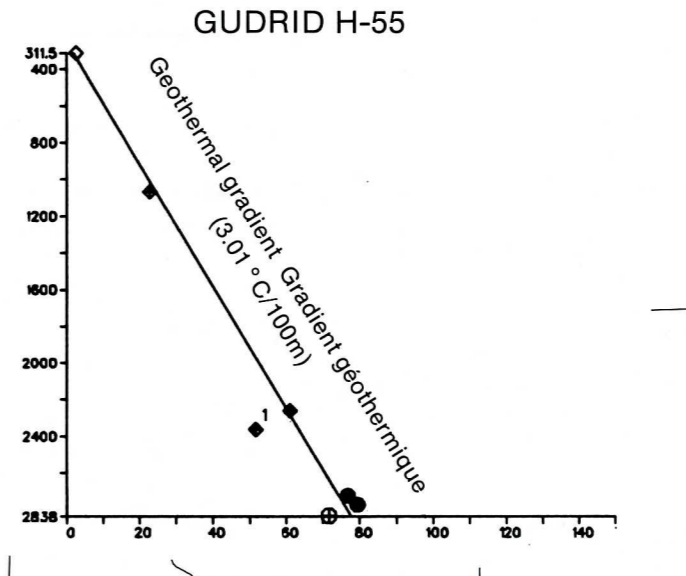
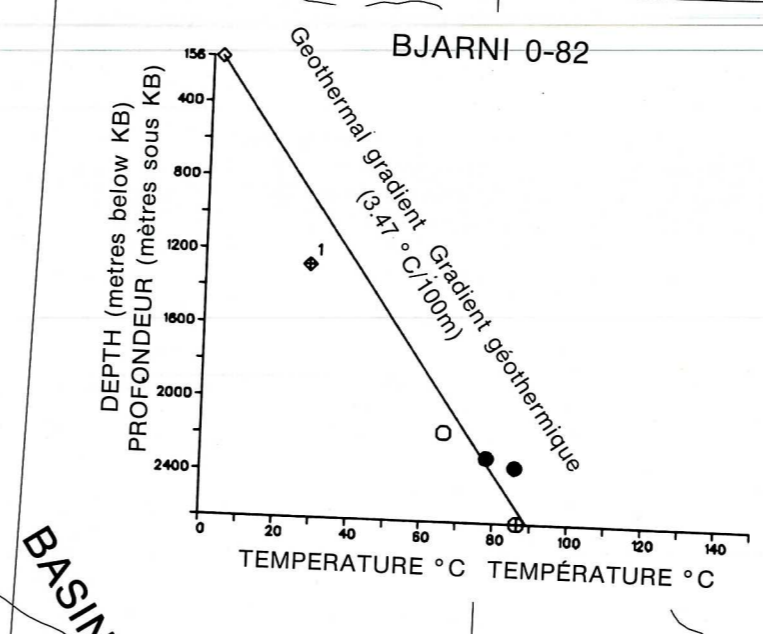
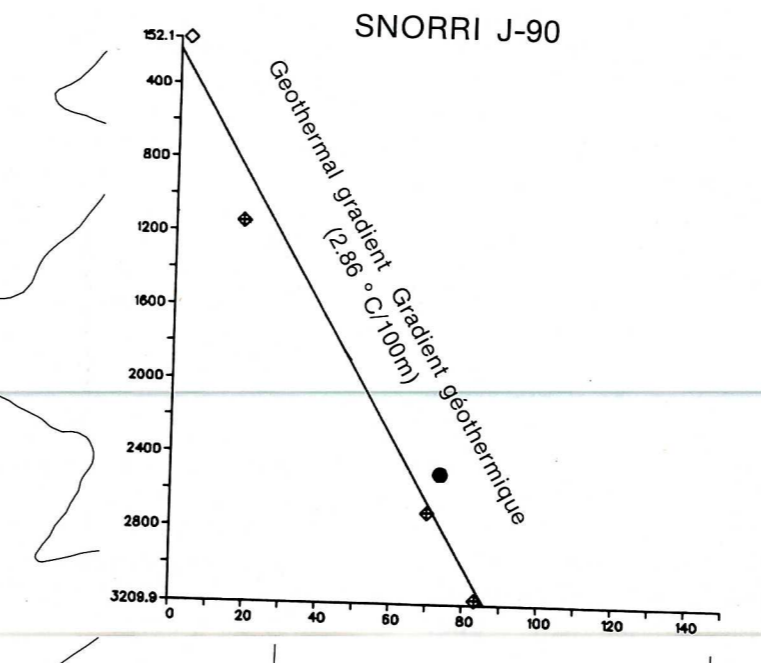
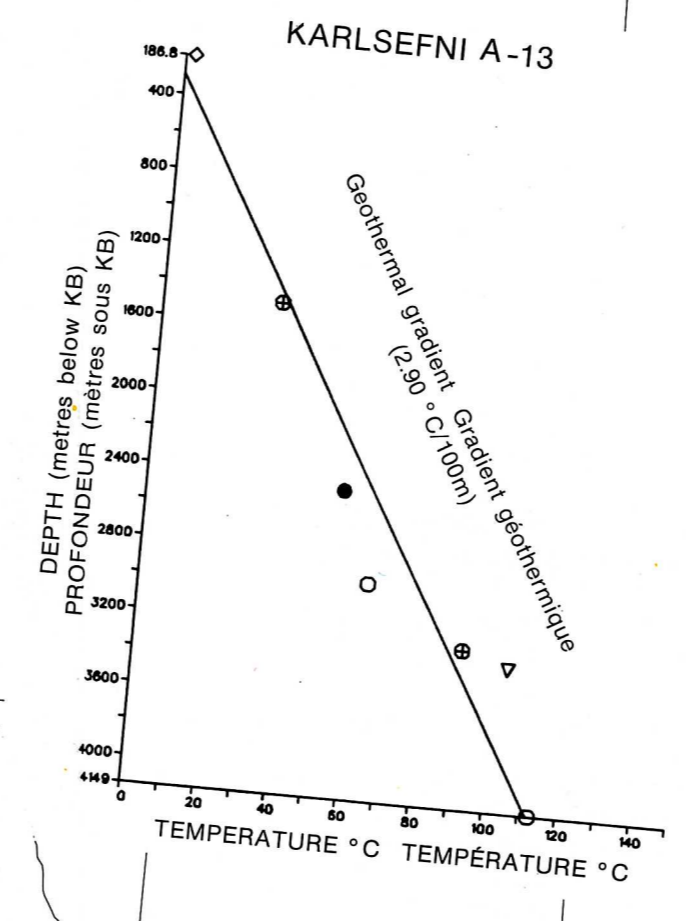
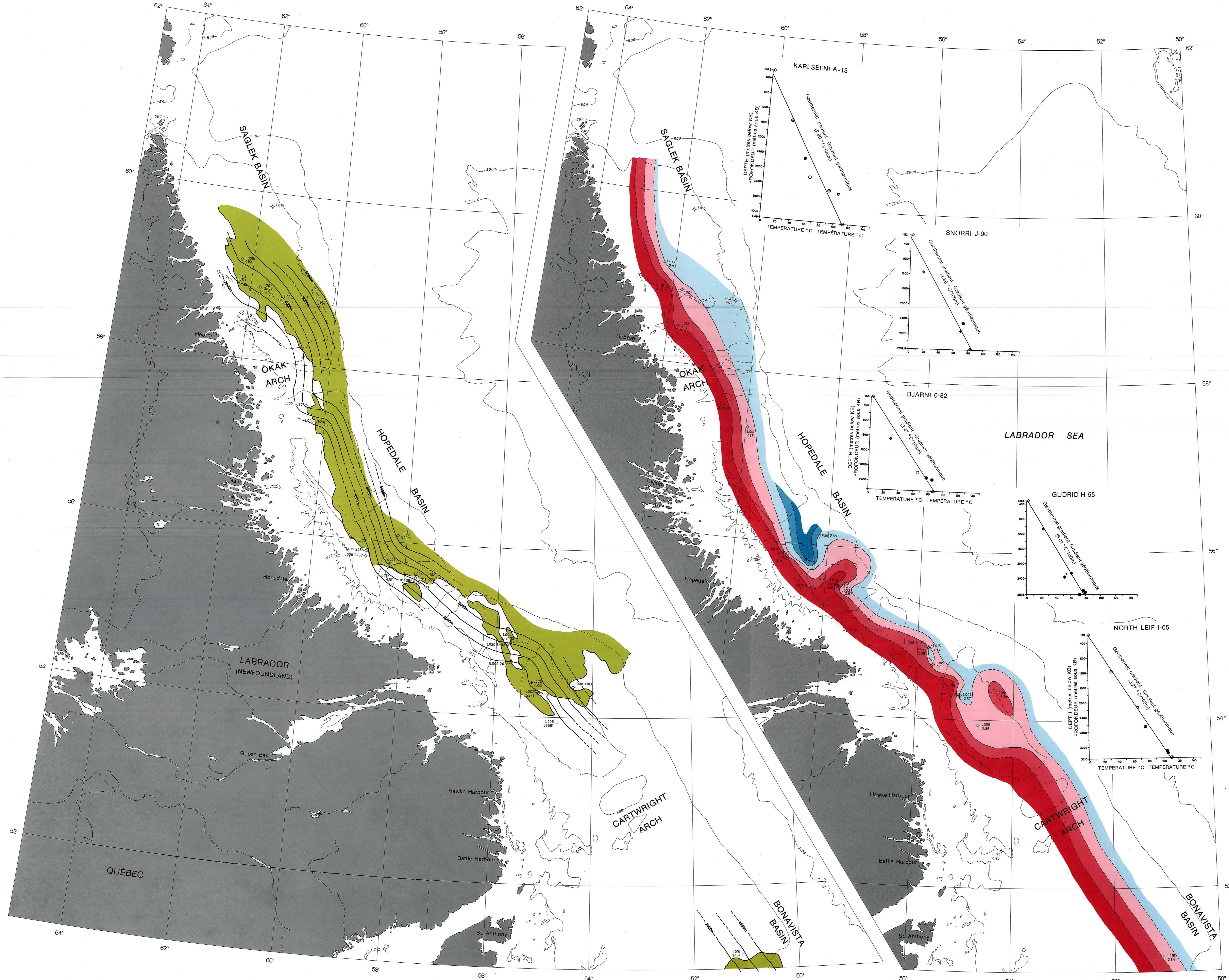
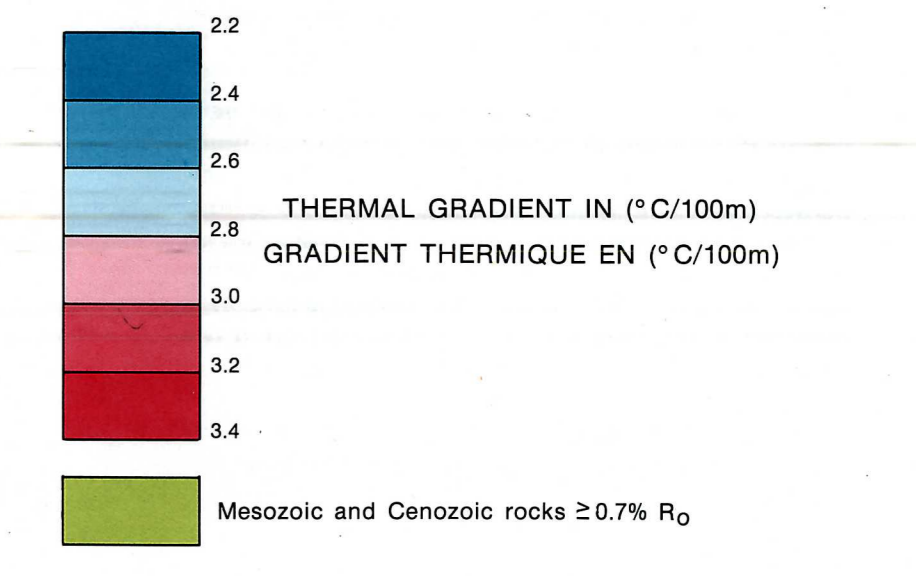
GEOCHEMISTRY | GÉOCHIMIE
LABRADOR SEA | MER DU LABRADOR

Bathymetric contours in metres / Courbes bathymétriques en mètres
Lambert Conformal Projection (Standard Parallels 40°N and 66°N) / Projection conforme de Lambert (Parallèles standard 45°N et 66°N)

Scale 1:2,000,000 Echelle
Kilometres Kilomètres

LEGEND | LÉGENDE

- Sediment edge / Bordure sédimentaire
- Organic Maturity (0.7% R₀) contour / Maturité organique (0.7% R₀) courb de niveau
- Well index number / Numéro d'index des puits
- Unknown / Inconnu
- Absent / Absent
- Depth (m) to 0.7% R₀ / Profondeur (m) 0.7% R₀
- Mean thermal gradient / Gradient thermique moyen
- Gas discovery / Découverte de gaz
- Oil show / Indice de pétrole
- Abandon/dry / Abandonné/sec



WELLS | PUIITS

- | | |
|--------------------------|--------------------------|
| L001 Leif E-38 | L015 Roberval K-92 |
| L002 Leif M-48 | L016 Hare Bay E-21 |
| L003 Bjarni H-81 | L017 Tyrk P-100 |
| L004 Gudrid H-55 | L018 Bjarni O-82 |
| L005 Freydis B-87 | L019 Gilbert F-53 |
| L006 Snorri J-90 | L020 Roberval C-02 |
| L007 Karlsefni A-13 | L021 South Labrador N-79 |
| L008 Indian Harbour M-52 | L022 Ogmund E-73 |
| L009 Cartier D-70 | L023 North Leif I-05 |
| L010 Cabot G-91 | L024 North Bjarni F-06 |
| L011 Herjolff M-92 | L025 Rut H-11 |
| L012 Verrazano L-77 | L026 Corte Real P-85 |
| L013 Skolp E-07 | L027 Pothurst P-19 |
| L014 Hopedale E-33 | L028 South Hopedale L-39 |

DEPTH TO GAS GENERATION
PROFONDEUR DE LA COUCHE GÉNÉRATRICE DE GAZ

GEOTHERMAL GRADIENTS
GRADIENTS GÉOTHERMIQUES

This map has been produced from a scanned version of the original map / Reproduction par numérisation d'une carte sur papier