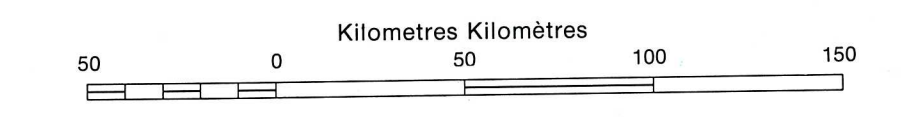


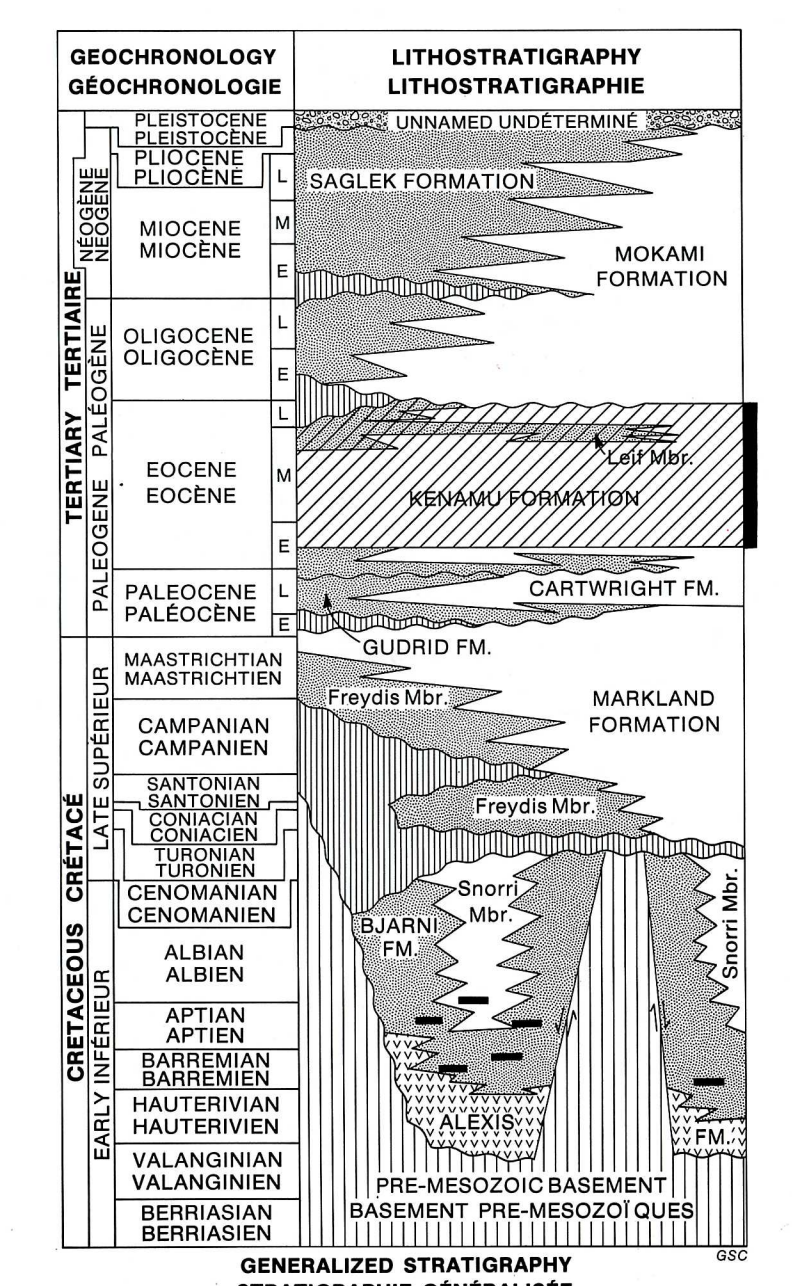
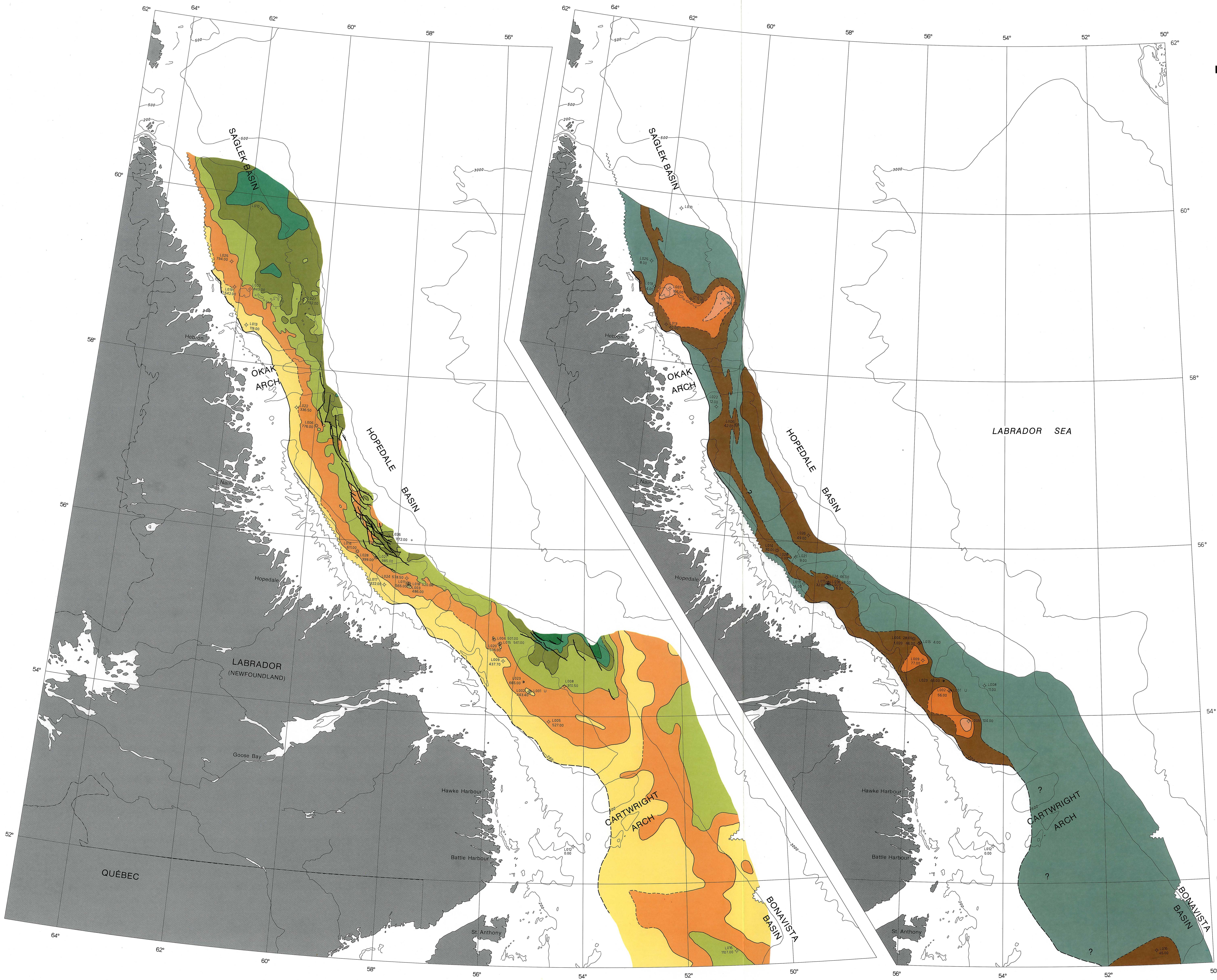
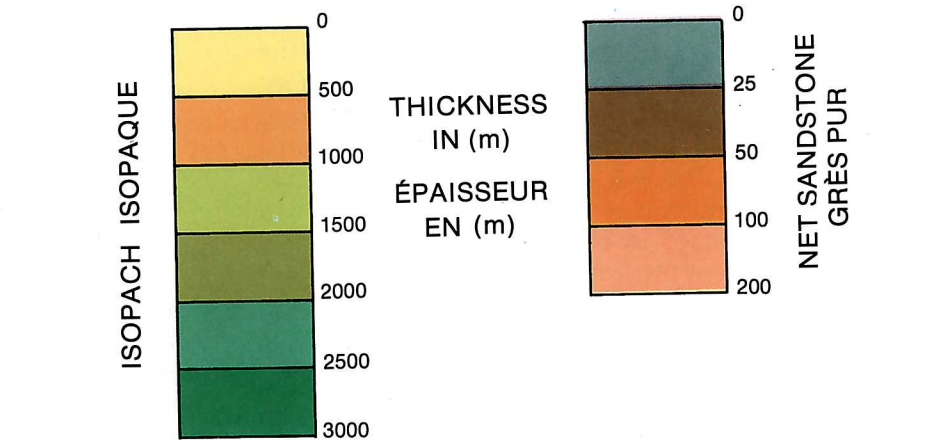
**ISOPACH/ ISOPAQUE/  
NET SANDSTONE IV GRÈS PUR  
LABRADOR SEA MER DU LABRADOR**

Bathymetric contours in metres  
Lambert Conformal Projection (Standard Parallels 45°N. and 66°N.)  
Courbes bathymétriques en mètres  
Projection conforme de Lambert (Parallèles standard 45°N. et 66°N.)  
Scale 1:2,000,000 Échelle



**LEGEND / LÉGENDE**

- Onlap edge Position débordée
- Erosional edge Bordure de la zone érodée
- Uncertain boundary Limite incertaine
- Fault Faille
- Well index number Numéro d'index des puits
- Unknown Incertain
- Absent Absent
- Thickness (metres) Épaisseur (mètres)
- Gas discovery Découverte de gaz
- Oil show Indice de pétrole
- Abandon/dry Abandonné/sec



- WELLS / PUIES**
- |                          |                          |
|--------------------------|--------------------------|
| L001 Leif E-38           | L015 Roberval K-92       |
| L002 Leif M-48           | L016 Hare Bay E-21       |
| L003 Bjarni H-81         | L017 Tyrk P-100          |
| L004 Gudrid H-65         | L018 Bjarni O-92         |
| L005 Freydis B-87        | L019 Gilbert F-53        |
| L006 Snorri J-90         | L020 Roberval C-02       |
| L007 Kartsefni A-13      | L021 South Labrador N-79 |
| L008 Indian Harbour M-52 | L022 Ogmund E-73         |
| L009 Cartier D-70        | L023 North Leif I-05     |
| L010 Cabot G-91          | L024 North Bjarni F-06   |
| L011 Herjolff M-92       | L025 Rut H-11            |
| L012 Verrazano L-77      | L026 Corte Real P-85     |
| L013 Skop E-07           | L027 Pothurst P-19       |
| L014 Hopedale E-33       | L028 South Hopedale L-39 |

**KENAMU FORMATION (EARLY TO LATE EOCENE)  
FORMATION DE KENAMU (EOCÈNE INFÉRIEUR À SUPÉRIEUR)**