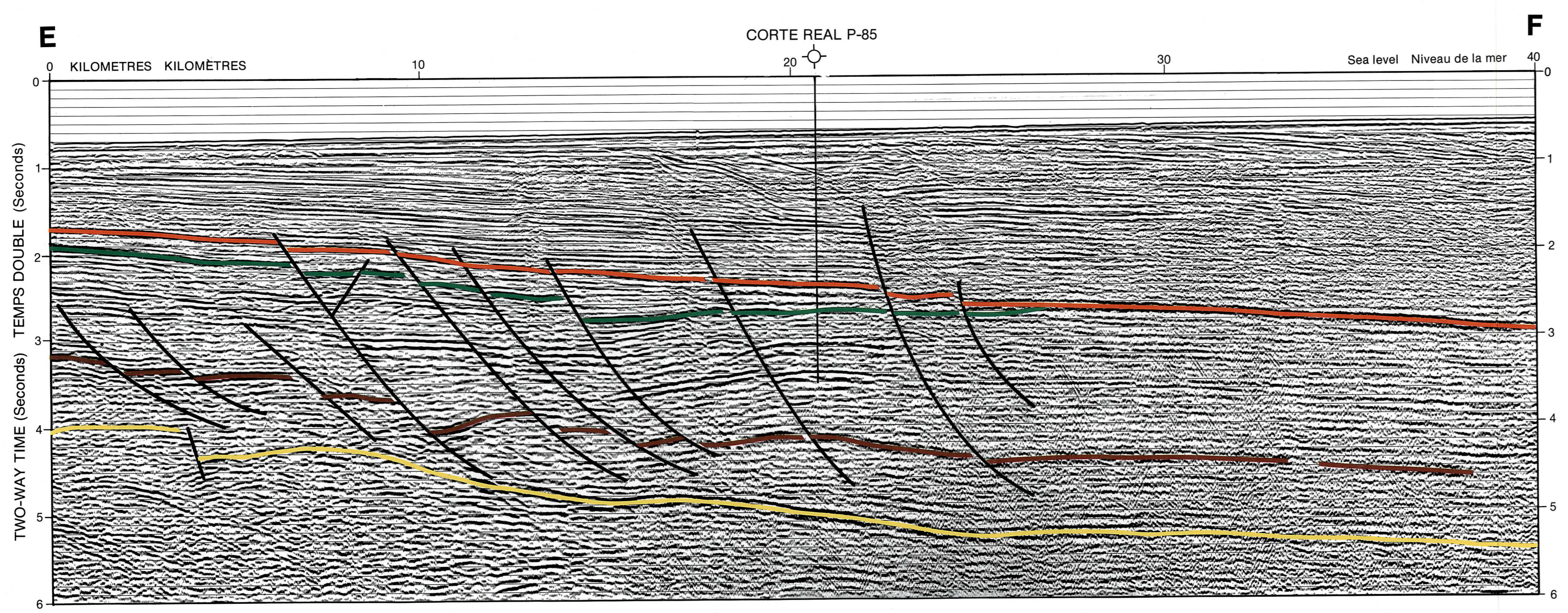
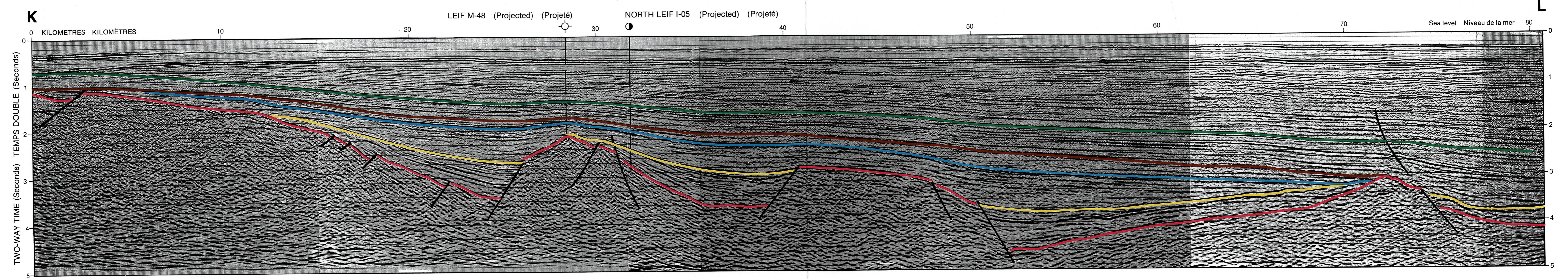
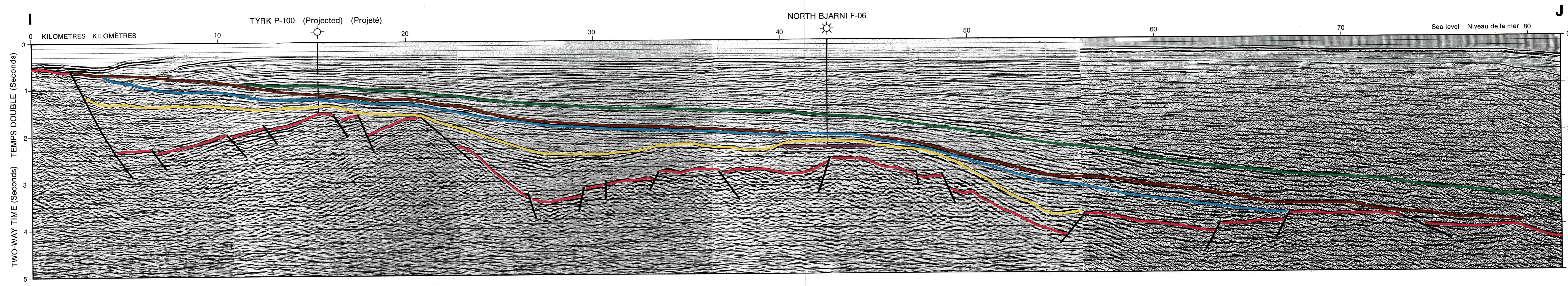
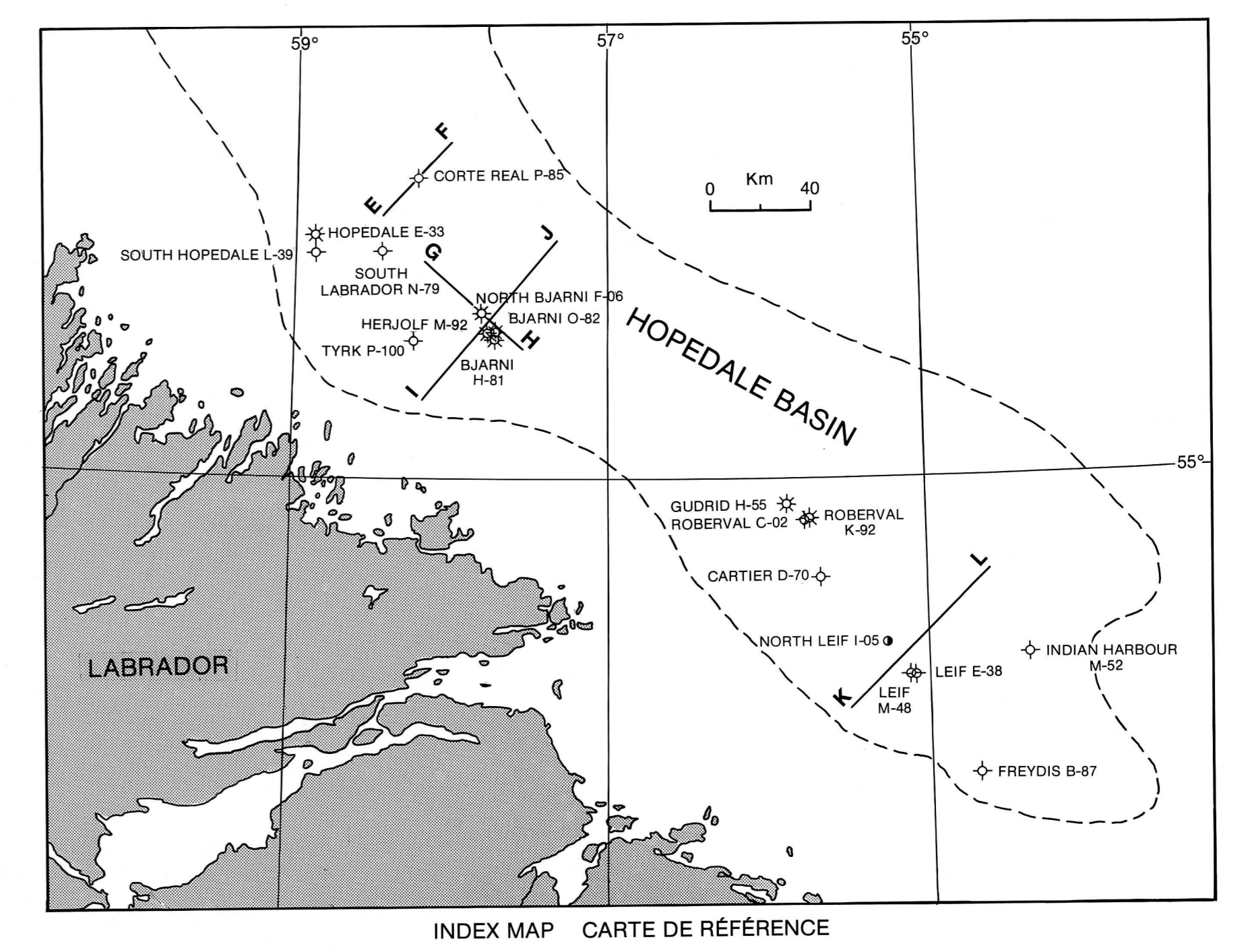
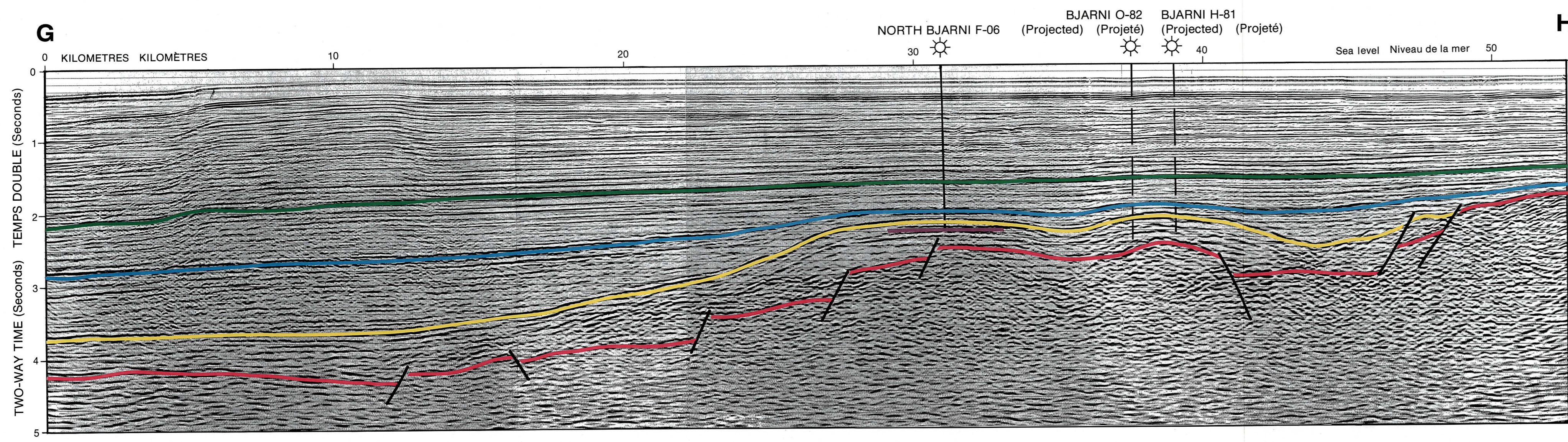


**STRUCTURE II STRUCTURE
LABRADOR SEA MER DU LABRADOR**



- LEGEND LÉGENDE**
- REFLECTORS REFLECTEURS
 - WITHIN MOKAMI FORMATION A L'INTÉRIEUR DE LA FORMATION DE MOKAMI
 - TOP KENAMU FORMATION TOIT DE LA FORMATION DE KENAMU
 - TOP GUDRID/CARTWRIGHT FORMATIONS TOIT DES FORMATIONS DE GUDRID/CARTWRIGHT
 - TOP MARKLAND FORMATION TOIT DE LA FORMATION DE MARKLAND
 - TOP BJARNI FORMATION TOIT DE LA FORMATION DE BJARNI
 - TOP BASEMENT PARTIE SUPÉRIEURE DU SOCLE
 - FAULT FAUILLE
 - "FLAT SPOT" MARKING GAS/WATER CONTACT ON NORTH BJARNI STRUCTURE "ENDROIT PLAT" INDICANT LE CONTACT GAZ/EAU SUR LA STRUCTURE DU NORD DE BJARNI
 - GAS DISCOVERY DÉCOUVERTE DE GAZ
 - OIL SHOW INDIGE DE PÉTROLE
 - ABANDON/DRY ABANDONNÉ/SEC



**SEISMIC INTERPRETATION CENTRAL HOPEDALE BASIN SW-NE DIP SECTIONS, NW-SE STRIKE SECTION AND SOUTH HOPEDALE BASIN SW-NE DIP SECTION
INTERPRÉTATION SISMIQUE PENDAGE SW-NE DU BASSIN CENTRAL DE HOPEDALE, LIGNE DIRECTRICE NW-SE ET PENDAGE SW-NE DU SUD DU BASSIN DE HOPEDALE**