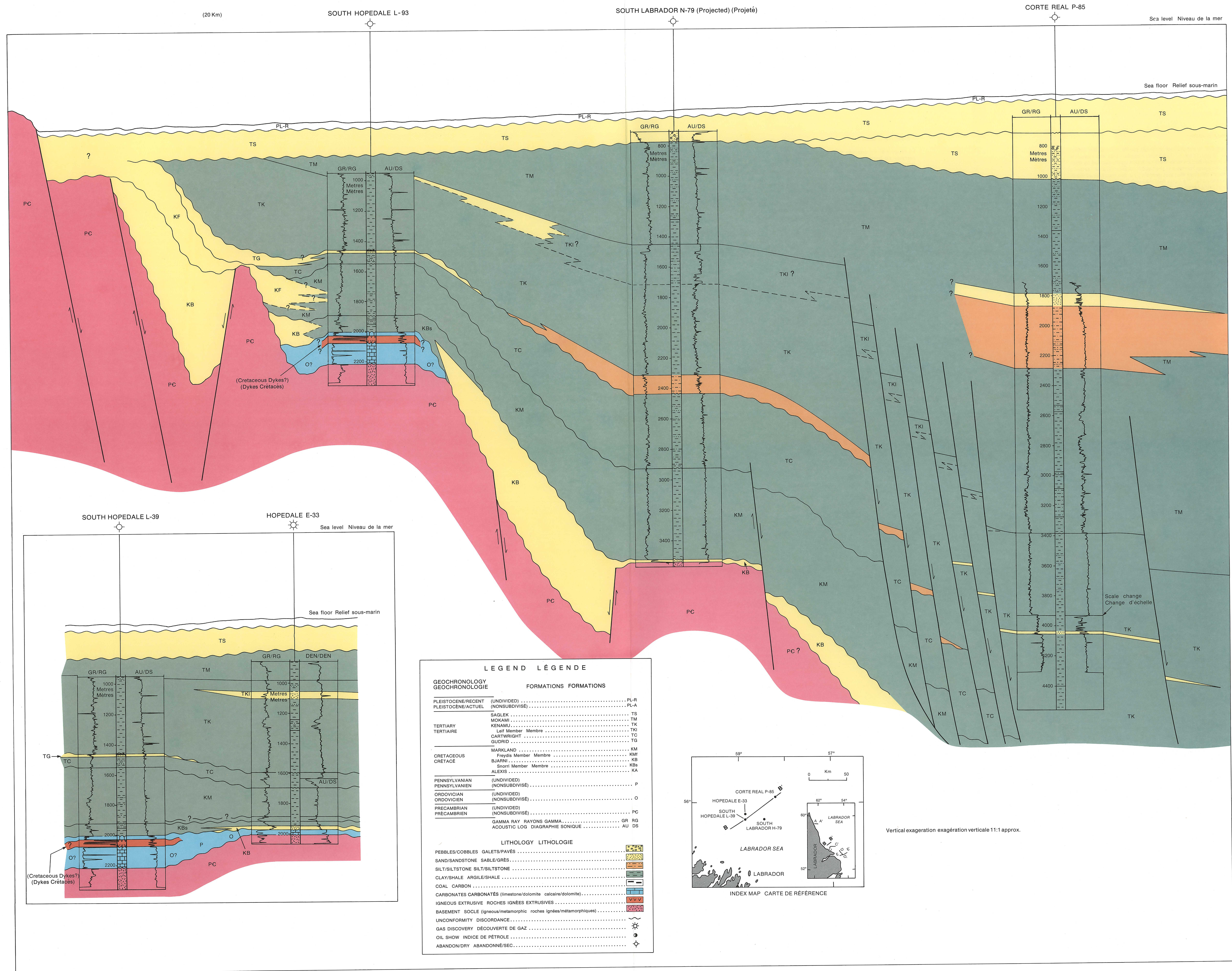


H O P E D A L E B A S I N



LEGEND / LÉGENDE

| GEOCHRONOLOGY / GEOCHRONOLOGIE | | FORMATIONS / FORMATIONS | |
|---|-------------------------------|-------------------------|-----|
| PLEISTOCENE/RECENT (UNDIVIDED) / PLEISTOCÈNE/ACTUEL (NONSUBDIVISÉ) | PL-R | SAGLEK | TS |
| | PL-A | MOKAMI | TM |
| | | KENAMI | TK |
| | | Leif Member / Membre | TKI |
| | | CARTWRIGHT | TC |
| | | GUARD | TG |
| | | MARKLAND | KM |
| CRETACEOUS / CRÉTACÉ | Fraylla Member / Membre | KMf | |
| | BJARNI | KB | |
| | Snorri Member / Membre | KBs | |
| | ALEXIS | KA | |
| PENNSYLVANIAN (UNDIVIDED) / PENNSYLVANIE (NONSUBDIVISÉ) | P | | |
| ORDOVICIAN (UNDIVIDED) / ORDOVICIEN (NONSUBDIVISÉ) | O | | |
| PRECAMBRIAN (UNDIVIDED) / PRÉCAMBRIEN (NONSUBDIVISÉ) | PC | | |
| | GAMMA RAY / RAYONS GAMMA | GR | |
| | ACOUSTIC LOG / DIAGNOSTIC LOG | AU DS | |
| LITHOLOGY / LITHOLOGIE | | | |
| PEBBLES/COBBLES / GALETS/PAVÉS | | | |
| SAND/SANDSTONE / SABLE/GRÈS | | | |
| SILT/SILTSTONE / SILT/SILTSTONE | | | |
| CLAY/SHALE / ARGILE/SHALE | | | |
| COAL / CARBON | | | |
| CARBONATES / CARBONATES (limestone/dolomite / calcaire/dolomite) | | | |
| IGNEOUS EXTRUSIVE / ROCHES IGNEES EXTRUSIVES | | | |
| BASEMENT / SOCLE (igneous/metamorphic / roches ignées/métamorphiques) | | | |
| UNCONFORMITY / DISCORDANCE | | | |
| GAS DISCOVERY / DÉCOUVERTE DE GAZ | | | |
| OIL SHOW / INDICE DE PÉTROLE | | | |
| ABANDON/DRY / ABANDONNÉ/SEC | | | |

LITHOSTRATIGRAPHY LABRADOR SEA V LITHOSTRATIGRAPHIE MER DU LABRADOR
 STRATIGRAPHIC CROSS SECTION BB', SEDIMENT EDGE TO CORTE REAL P-85
 SECTION TRANSVERSALE STRATIGRAPHIQUE BB', BORDURE SÉDIMENTAIRE JUSQU'À CORTE REAL P-85