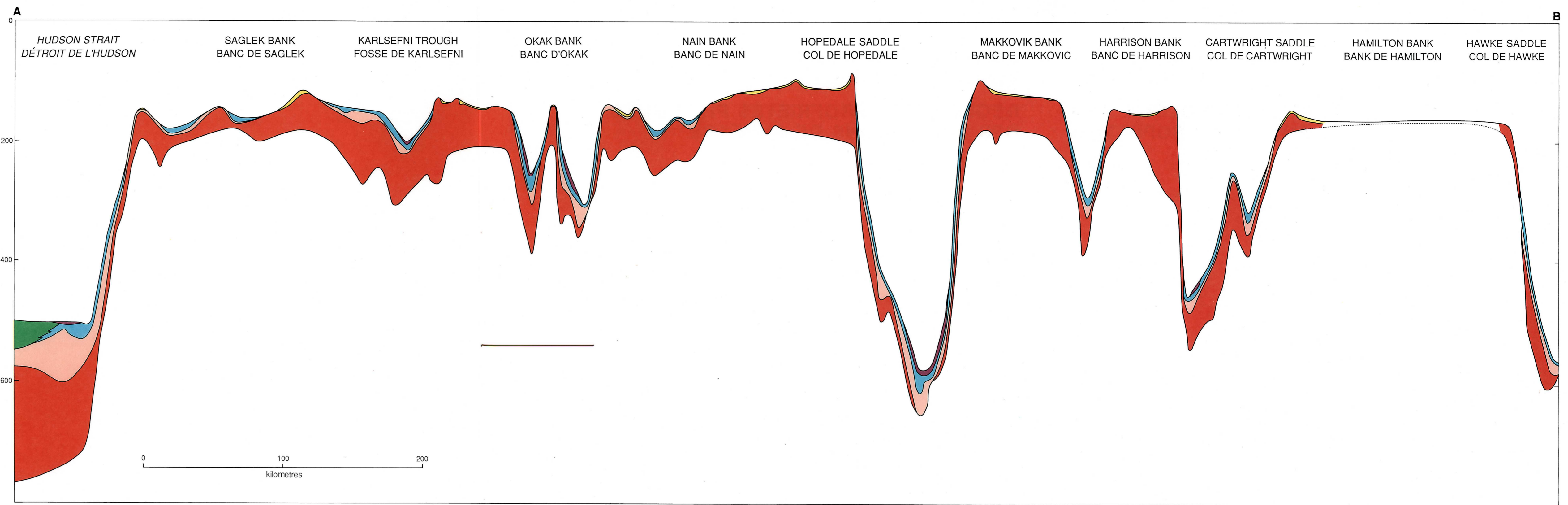
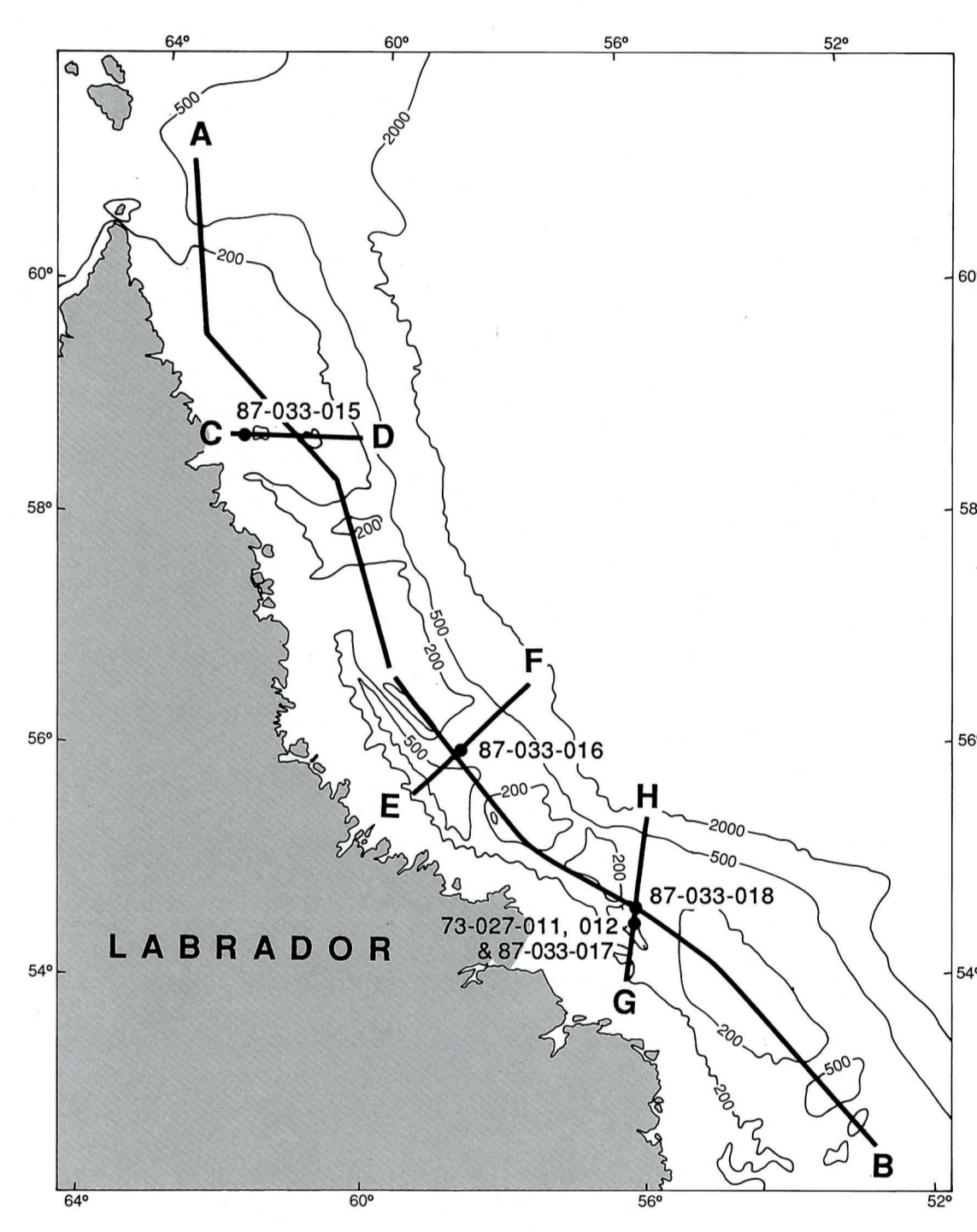
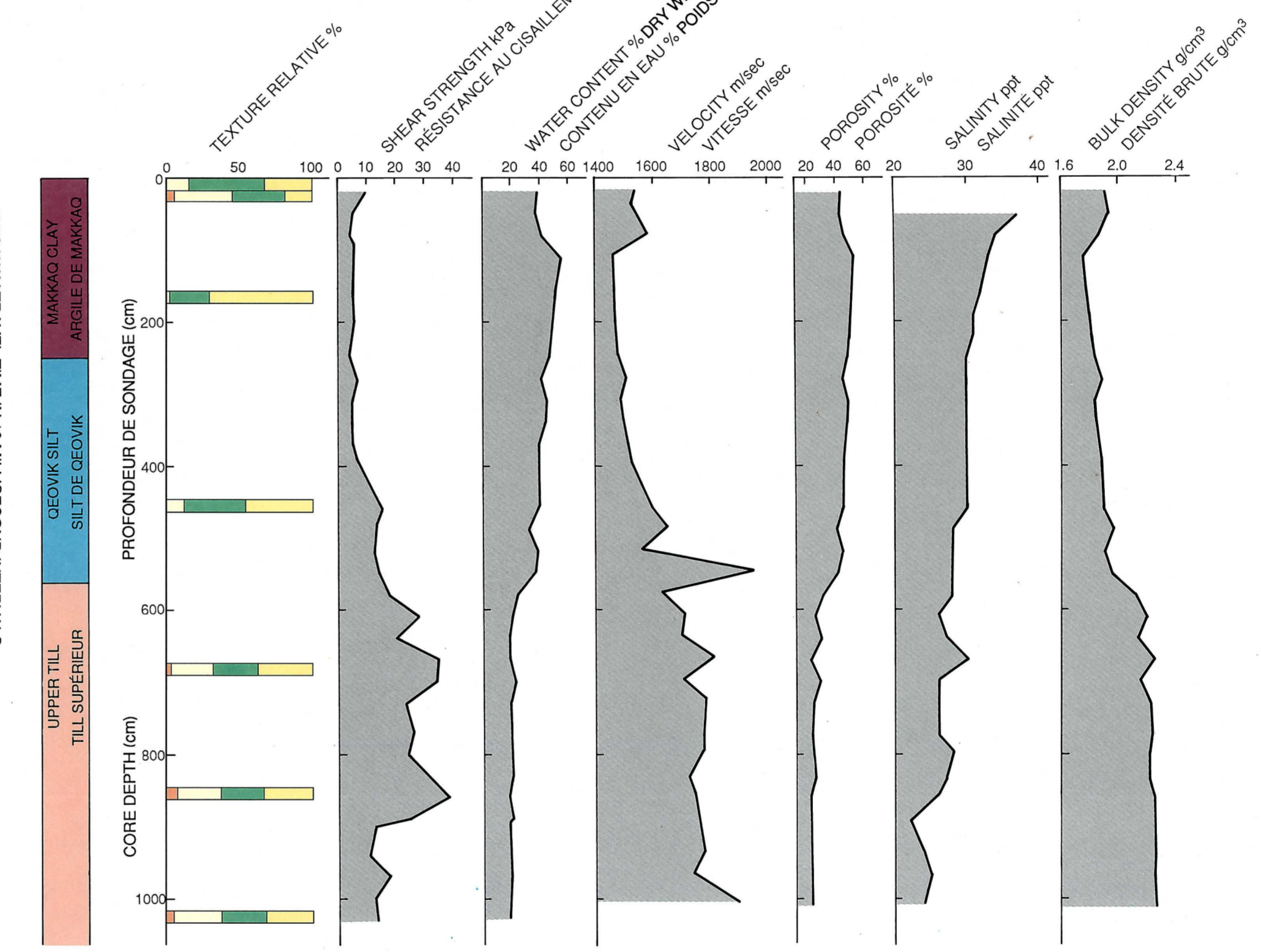
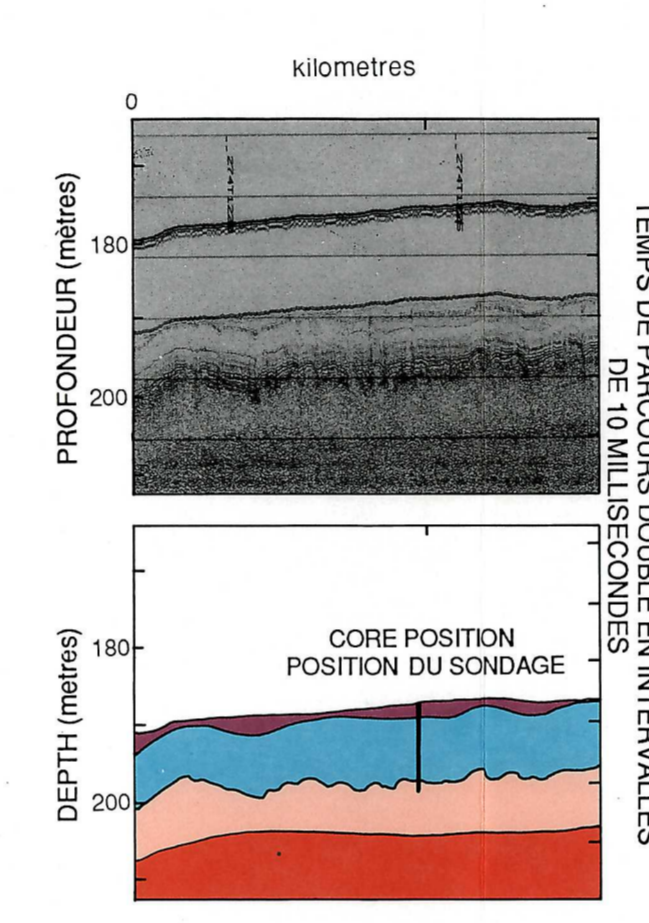
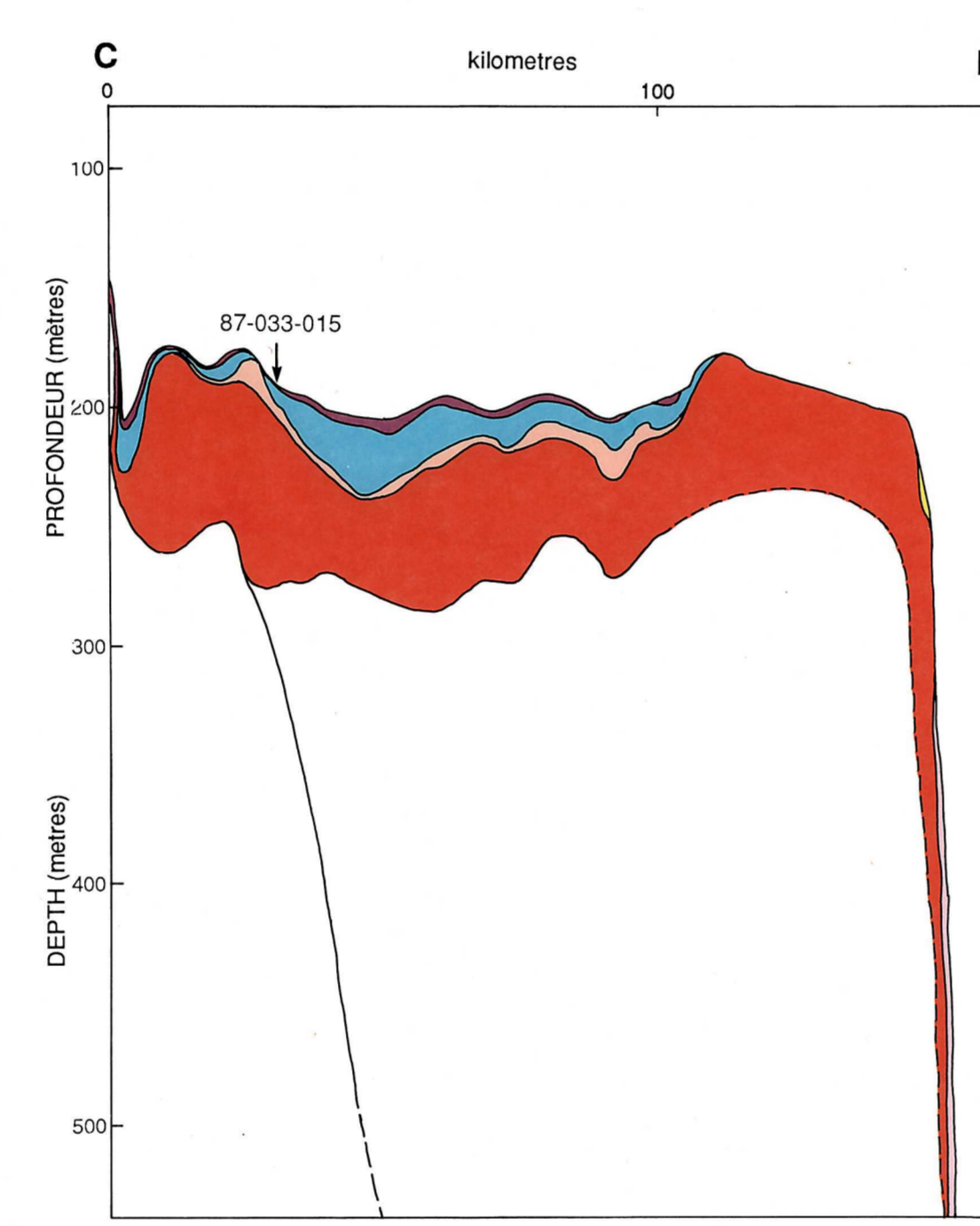


SURFICIAL GEOLOGY MAP / CARTE DE LA GÉOLOGIE DE SURFACE

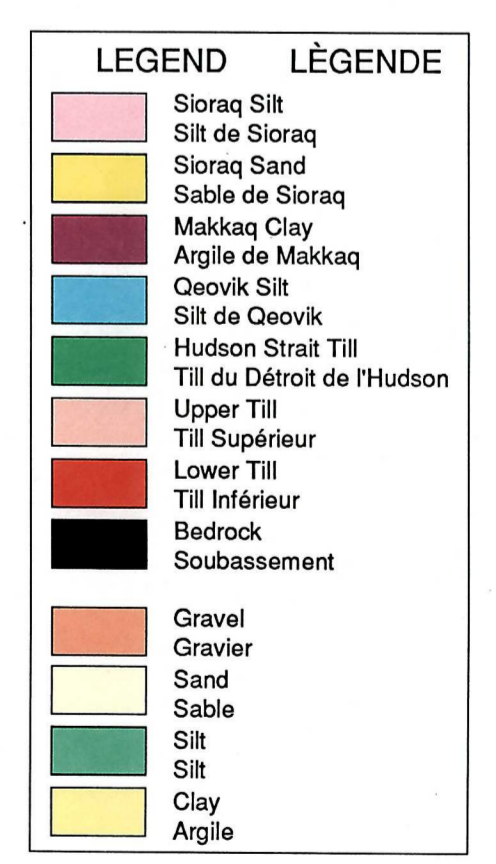
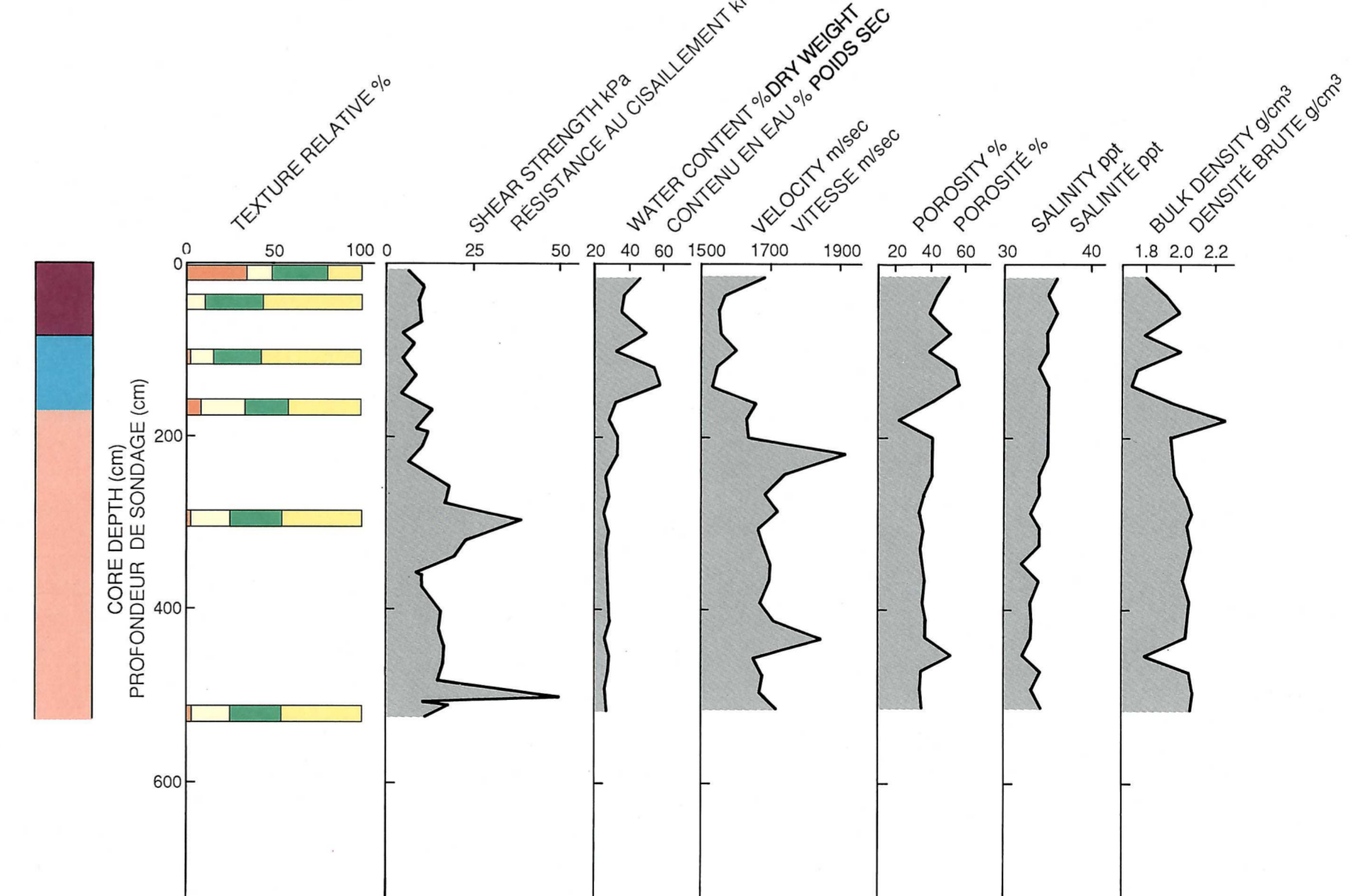
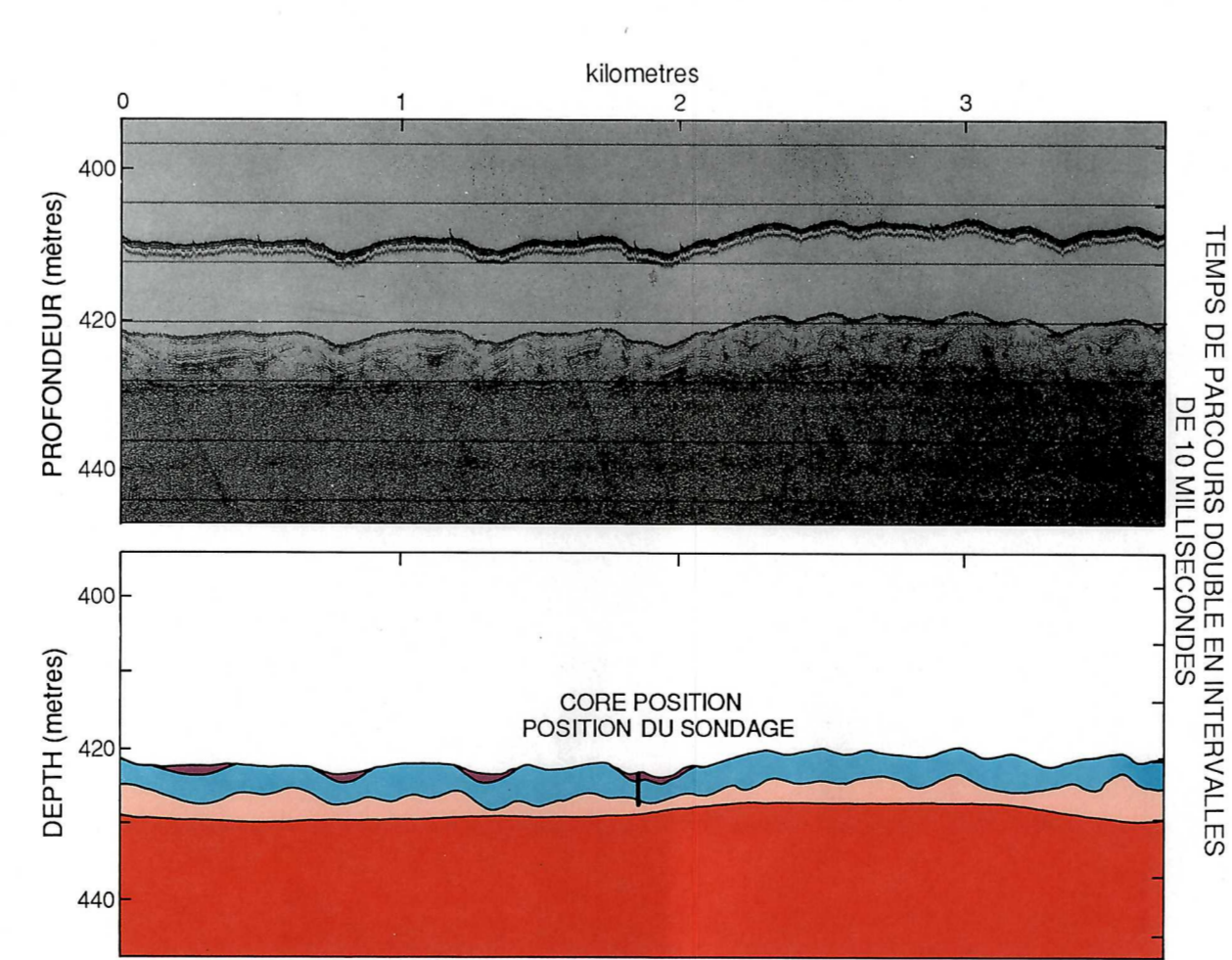
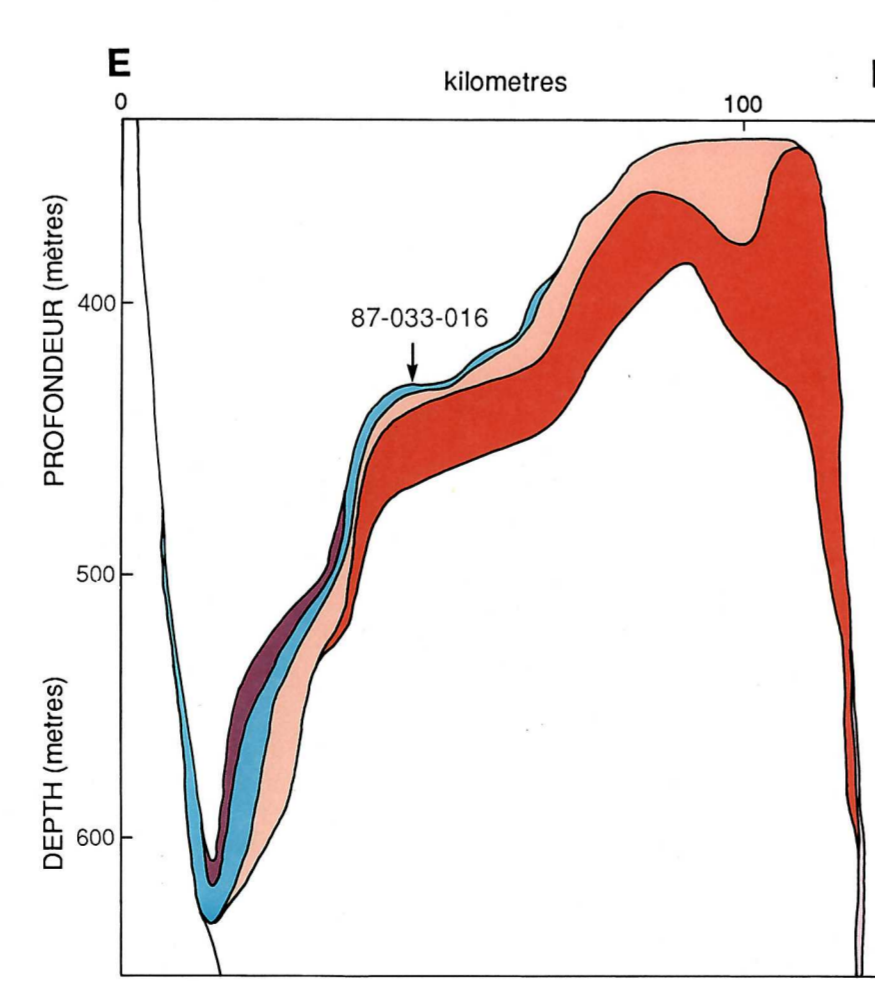


**CORE 87-033-15**



INDEX MAP / CARTE DE RÉFÉRENCE

**CORE 87-033-16**



**QUATERNARY GEOLOGY LABRADOR SEA II / GÉOLOGIE QUATÉNAIRE MER DU LABRADOR  
SURFICIAL GEOLOGY AND PHYSICAL PROPERTIES  
GÉOLOGIE ET PROPRIÉTÉS PHYSIQUES DES FORMATIONS DE SURFACE**

CONTRIBUTORS / COLLABORATEURS  
H. Josenhans and J. Zevenhulzen  
GEOTECHNICAL ANALYSIS / ANALYSE GÉOTECHNIQUE: J. Marsters

This map has been produced from a scanned version of the original map / Reproduction par numérisation d'une carte sur papier