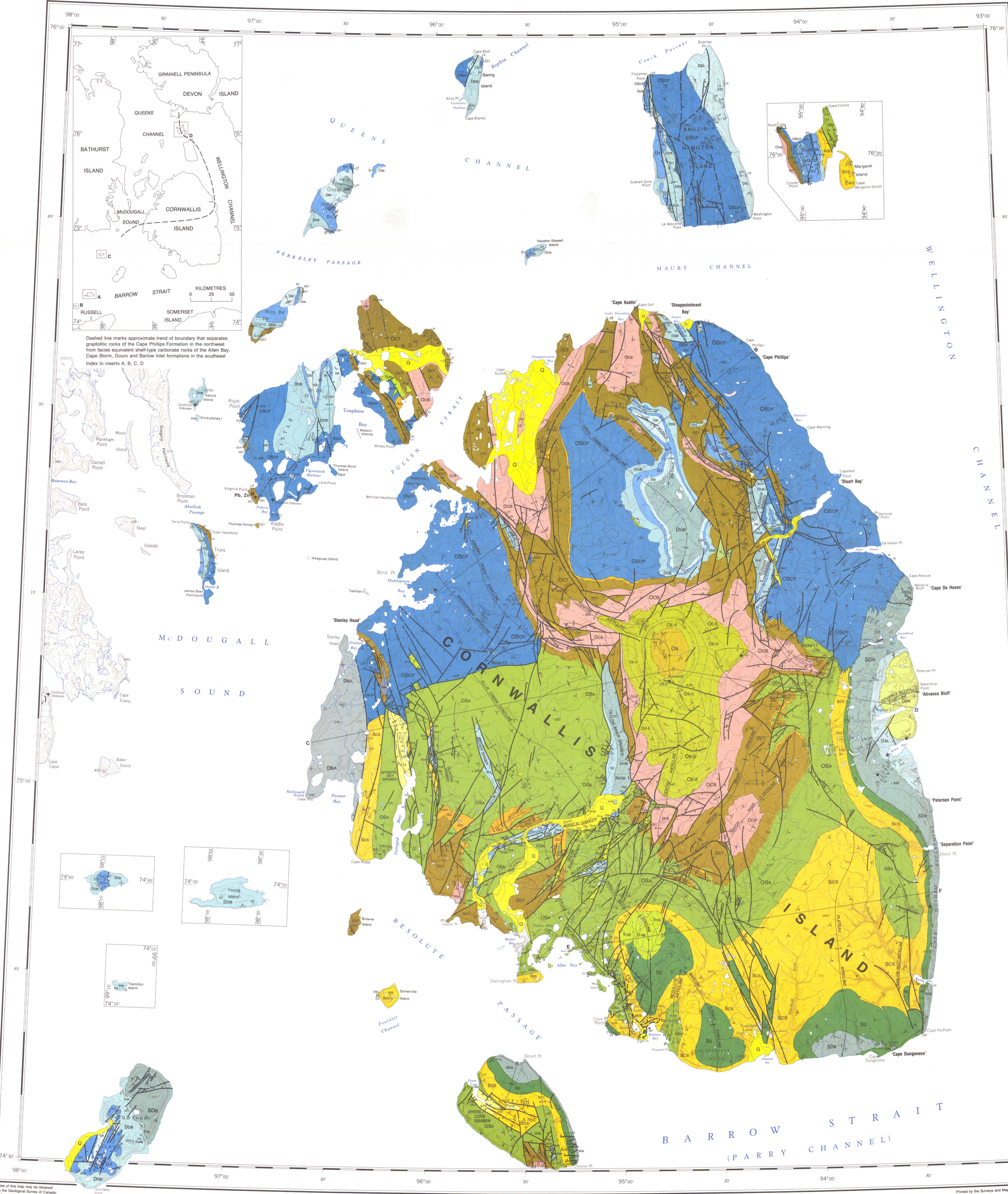
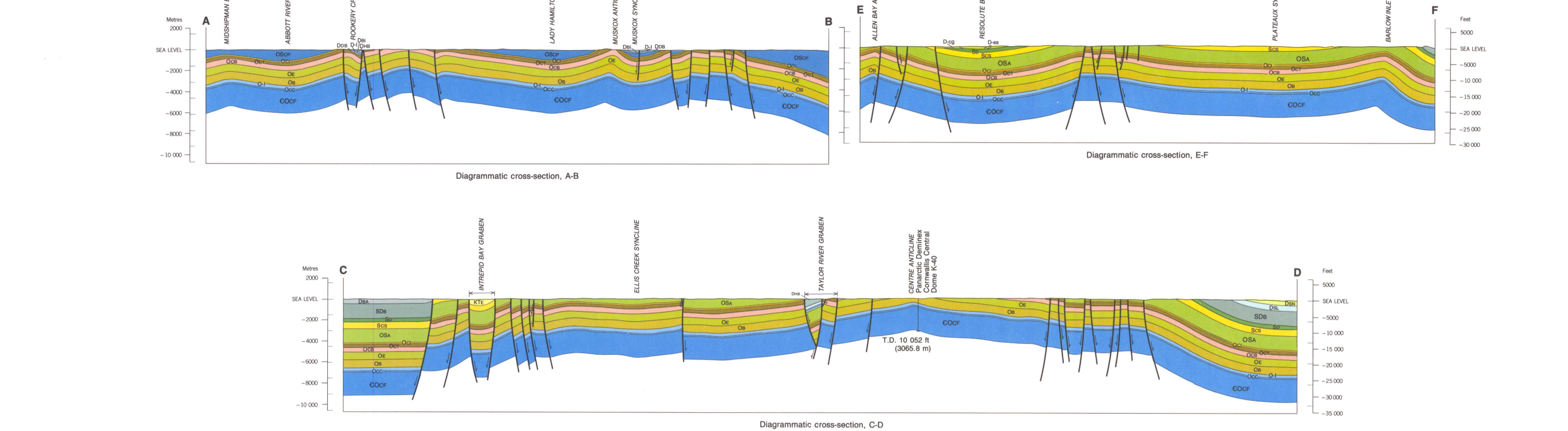


LEGEND table with columns for geological periods (Quaternary, Cretaceous and Tertiary, Mesozoic, Devonian, Paleozoic) and corresponding geological units with their lithological descriptions and ages.

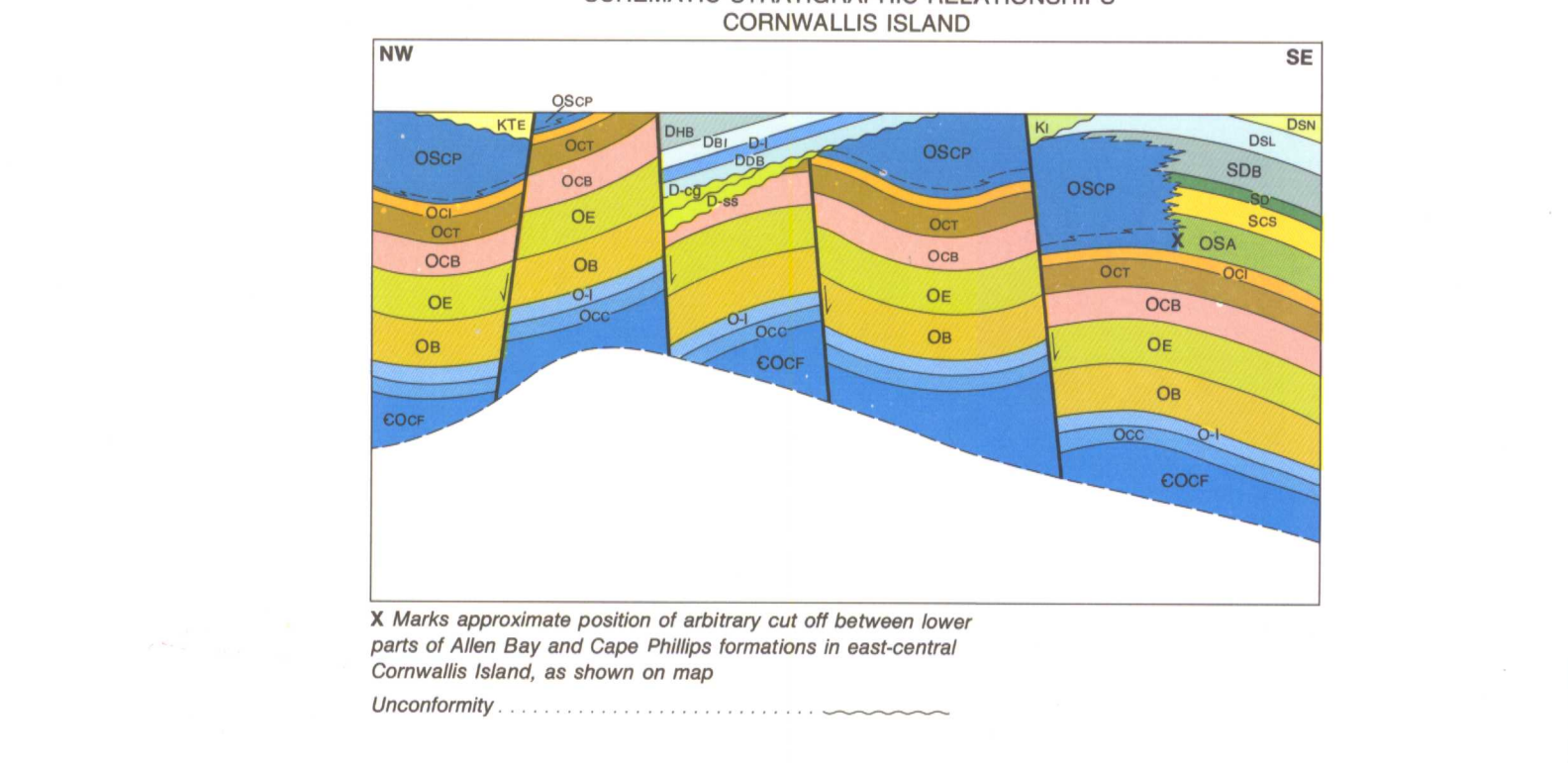
Geological boundary symbols and other symbols table, including symbols for faults, anticlines, synclines, and various geological features.



Map title: GEOLOGY OF CORNWALLIS ISLAND AND NEIGHBOURING SMALLER ISLANDS, CANADIAN ARCTIC ARCHIPELAGO. Includes map scale, projection, and publication information.

Geological cartography by D. J. Walter, Institute of Sedimentary and Petroleum Geology, Geological Survey of Canada. Includes notes on map assembly and revisions.

Notes section containing 12 numbered notes providing detailed geological observations and interpretations related to the map area.



Additional notes and information at the bottom left, including a schematic stratigraphic relationships diagram and a note about the map's production.