



LEGEND

- CENOZOIC**
Qu *Unconsolidated glacial deposits and tselnmeer*
- NEOHELKIAN**
Ndb *Diabase*
- MIDDLE APHEBIAN**
Amz *Pyroxene monzonite*
Agr *Granite and granodiorite*
As *Outer Shear Zone: strongly foliated biotite gneiss and hornblende gneiss*
Asc *Mylonite and cataclasite*
Asq *Quartzite, ultramafic rock, and marble*
- LATE ARCHEAN AND/OR EARLY APHEBIAN DALY BAY COMPLEX (Agl-Agn)**
Agn *Layered gneiss*
Abg *Biotite gneiss*
Ahg *Hornblende gneiss*
Aam *Amphibolite*
Amg *Migmatite*
- Boundary Shear Zone: mylonite, augen gneiss and deformed equivalents of units Agl to Agb**
Asu *Mylonite and cataclasite*
Asf *Quartzofeldspathic rocks*
Asm *Mafic rocks*
- Agb** *Gabbro, metagabbro, and amphibolite*
Aan *Anorthosite and gabbroic anorthosite*
Ala *Layered gabbroic anorthosite*
- Aqg** *Quartzofeldspathic granulite*
Ams *Paragneiss, marble, and quartzite*
- Agl** *Pyroxene granulite*

- Geological boundary (defined, approximate)
 Geological boundary (gradational)
 Gneissosity, schistosity (horizontal, inclined, vertical)
 Mineral lineation (horizontal, inclined)
 Lineation, axes of minor folds (horizontal, inclined)
 Structural trend (from air photographs)
 Fault (defined, assumed)
 Synform (inclined, overturned)

Geology by W.W. Heywood, 1967 and T.M. Gordon, 1970, 1971

Geological cartography by J.D. Narraway,
Geological Survey of Canada

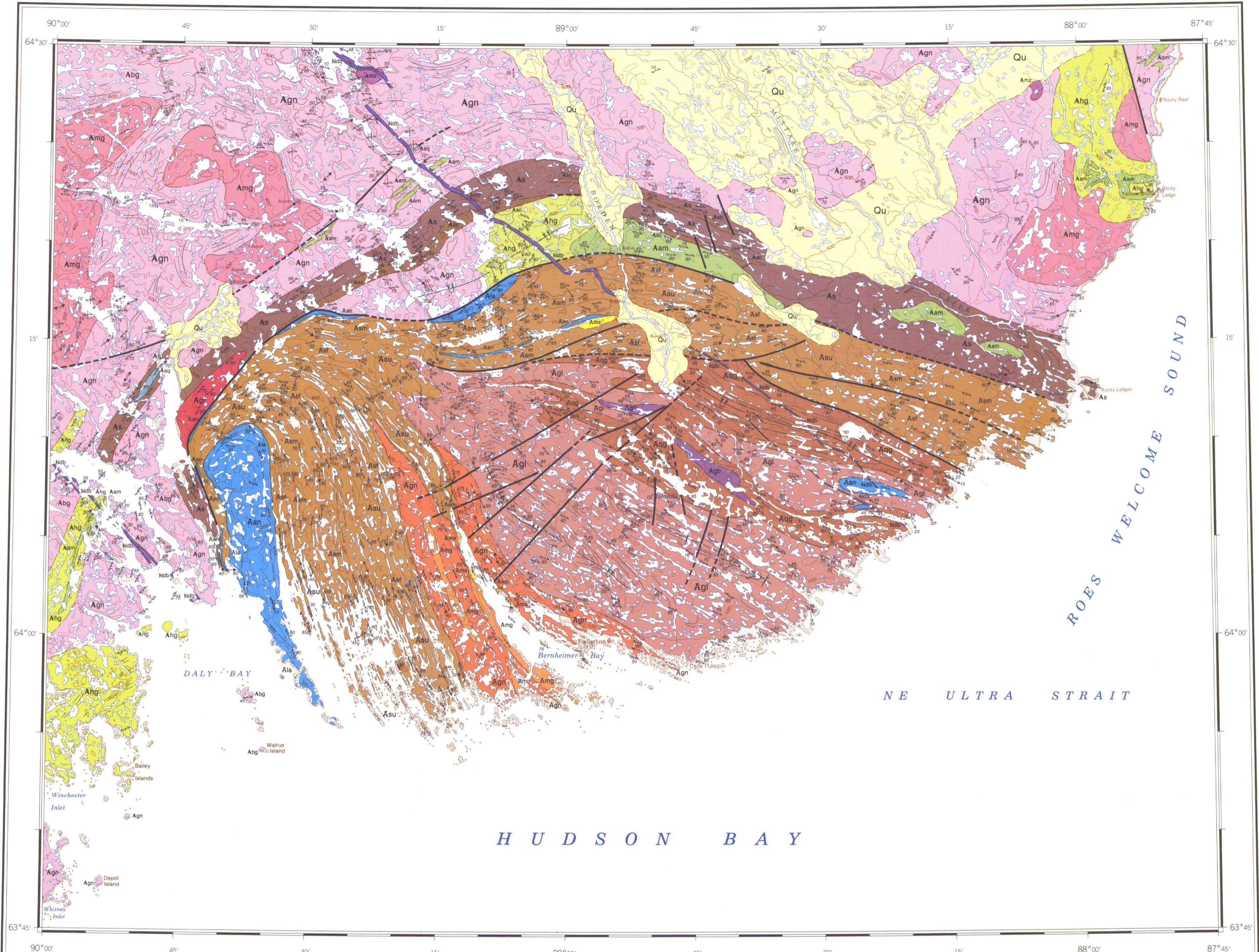
Any revisions or additional geological information known to the user would be welcomed by the Geological Survey of Canada

Base map assembled by the Geological Survey of Canada from maps published at the same scale by the Mapping and Charting Establishment, Department of National Defence, in 1967, 1980

Copies of the topographical editions covering this map area may be obtained from the Canada Map Office, Department of Energy, Mines and Resources, Ottawa Ontario, K1A 0E9

The proximity of the North Magnetic Pole causes the magnetic compass to be erratic in this area
 Mean magnetic declination 1987, 18°13' West, increasing 26.3' annually. Readings vary from 19°50' W in the SE corner to 16°25' W in the NW corner of the map

Elevations in feet above mean sea level



Copies of this map may be obtained from the Geological Survey of Canada
 601 Booth Street, Ottawa, Ontario K1A 0E8
 3303-33rd Street, N.W., Calgary, Alberta T2L 2A7



INDEX MAP

MAP 1652A
GEOLOGY

DALY BAY AREA
DISTRICT OF KEEWATIN
NORTHWEST TERRITORIES

Scale 1:250 000 - Échelle 1/250 000

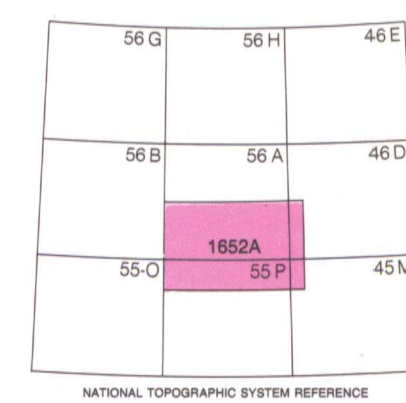
Kilometres 5 0 5 10 15 20 Kilomètres

Universal Transverse Mercator Projection
© Crown Copyrights reserved
 Projection transversale universelle de Mercator
© Droits de la Couronne réservés

GEOLOGICAL SURVEY
COMMISSION GÉOLOGIQUE

JULY 7 1988

NOT TO BE TAKEN FROM LIBRARY
NE PAS SORTIR DE LA BIBLIOTHÈQUE



NATIONAL TOPOGRAPHIC SYSTEM REFERENCE

MAP LIBRARY / CARTOTHEQUE

Recommended citation:
Gordon, T.M.
1988. Geology,
Daly Bay Area,
District of Keewatin,
Geological Survey of Canada
Map 1652A, scale 1:250 000

NOT TO BE TAKEN FROM LIBRARY
NE PAS SORTIR DE LA BIBLIOTHÈQUE

1652A

