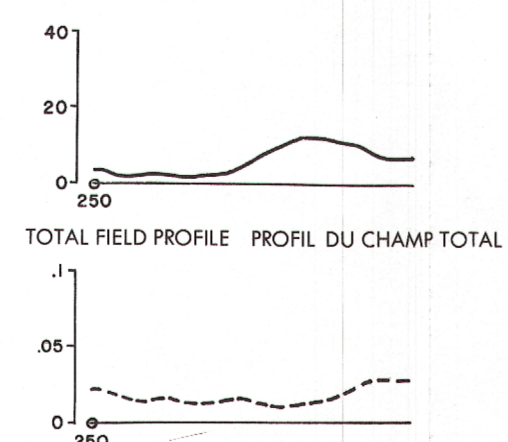


TOTEM VLF EM PROFILES FOR ORTHOGONAL STATION ( Seattle )  
 PROFILS DE TOTEM EM VLF POUR LA STATION ORTHOGONALE ( Seattle )



QUADRATURE PROFILE PROFIL DE QUADRATURE  
 Solid line is total field VLF  
 Scale is 1 cm = 20%  
 Le trait continu représente le champ total VLF  
 L'échelle est de 1 cm = 20%  
 Dashed line is quadrature component VLF  
 Scale is 1 cm = 0.5%  
 Le trait discontinu représente la composante en quadrature VLF  
 L'échelle est de 1 cm = 0.5%

The primary orthogonal VLF transmitting station was Seattle, Washington, until 1964. For the transmission conditions for VLF transmitting station, Seattle, Washington, until 1964, see the notes on the Seattle VLF VLF transmitting station. The Seattle VLF VLF transmitting station was used for the Seattle VLF VLF transmitting station.

On station in transmission of VLF component of the VLF field is Seattle, Washington, until 1964. For the transmission conditions for VLF transmitting station, Seattle, Washington, until 1964, see the notes on the Seattle VLF VLF transmitting station. The Seattle VLF VLF transmitting station was used for the Seattle VLF VLF transmitting station.