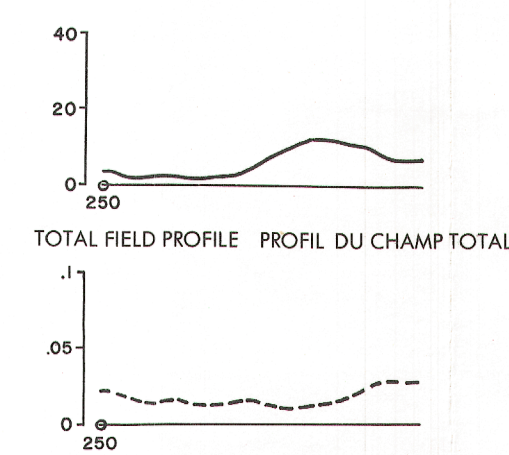




TOTEM VLF EM PROFILES FOR ORTHOGONAL STATION (Seattle)  
 PROFILS DE TOTEM EM VLF POUR LA STATION ORTHOGONALE (Seattle)



Solid line is total field VLF  
 Scale is 1 cm = 20%  
 Le trait continu représente le champ total VLF  
 L'échelle est de 1 cm = 20%

Dashed line is quadrature component VLF  
 Scale is 1 cm = 0.05%/m  
 Le trait discontinu représente la composante en quadrature VLF  
 L'échelle est de 1 cm = 0.05%/m