

Geological cartography by M. Hulton, Geological Survey of Canada

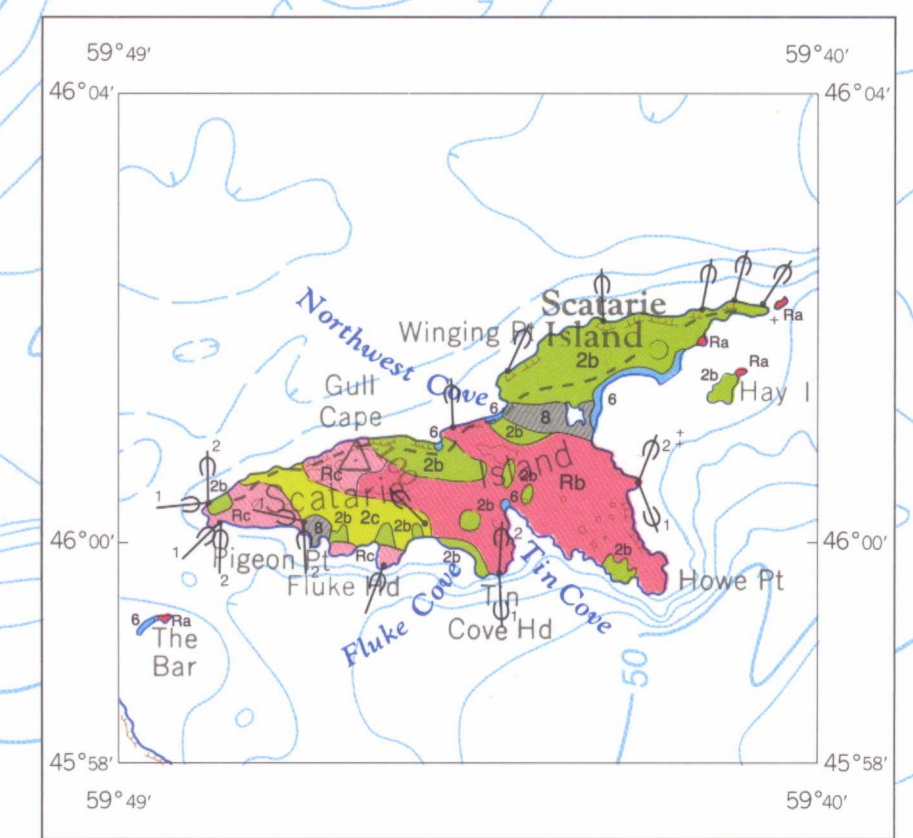
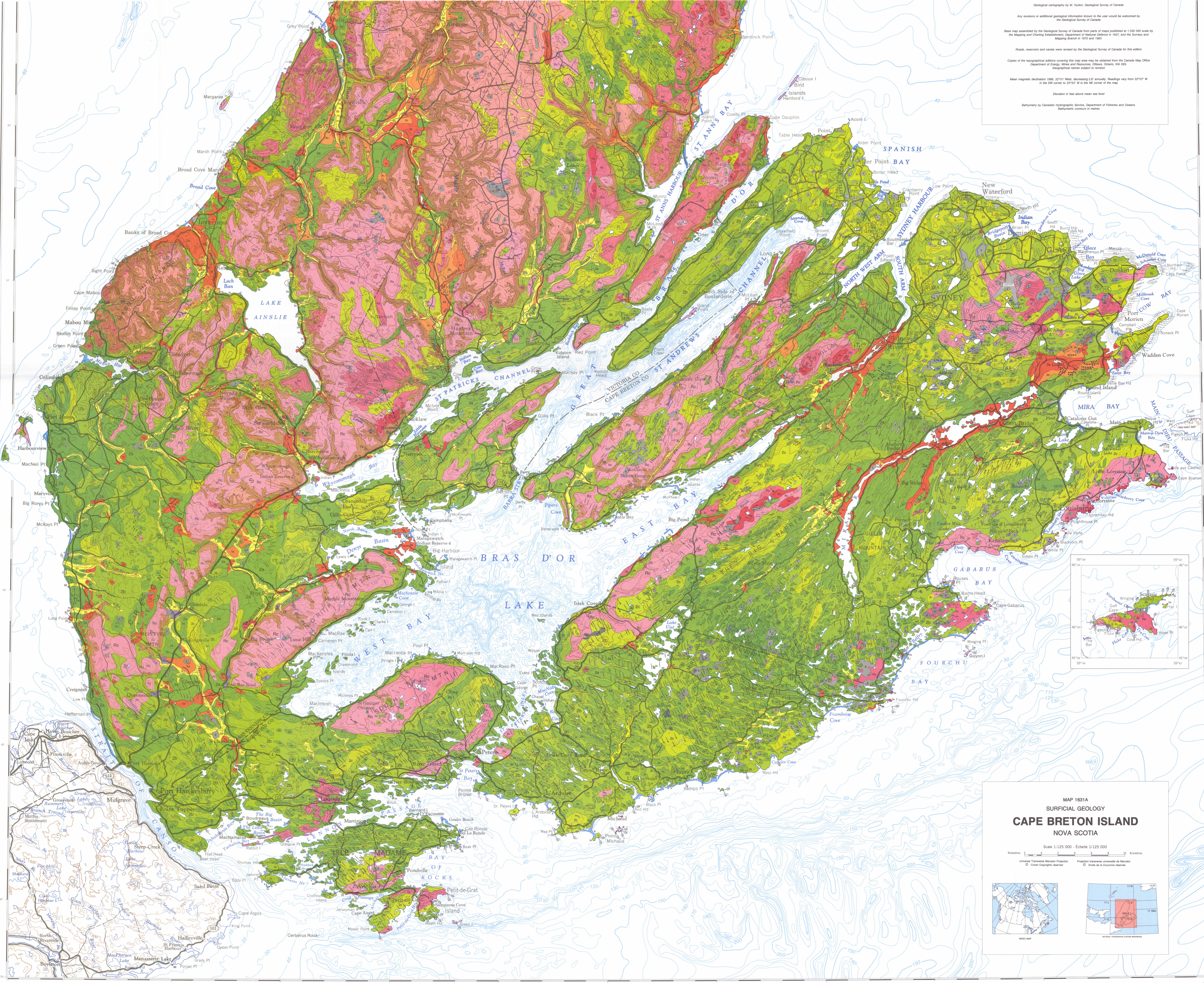
Any revisions or additional geological information known to the user would be welcomed by the Geological Survey of Canada.
Base map assembled by the Geological Survey of Canada from parts of maps published at 1:250 000 scale by the Ameghino and Cuvier Expeditions, Department of Natural Sciences in 1857, and the Survey and Mapping Branch in 1952 and 1963.

Roads, reservoirs and canals were revised by the Geological Survey of Canada for this edition.
Copies of the topographical address covering this map area may be obtained from the Canada Map Office, Department of Energy, Mines and Resources, Ottawa, Ontario, K1A 0S9.
Geographical names subject to revision.

Mean magnetic declination 1985, 22°51' West, decreasing 2.0" annually. Readings vary from 22°07' W at the SW corner to 23°32' W at the NE corner of the map.

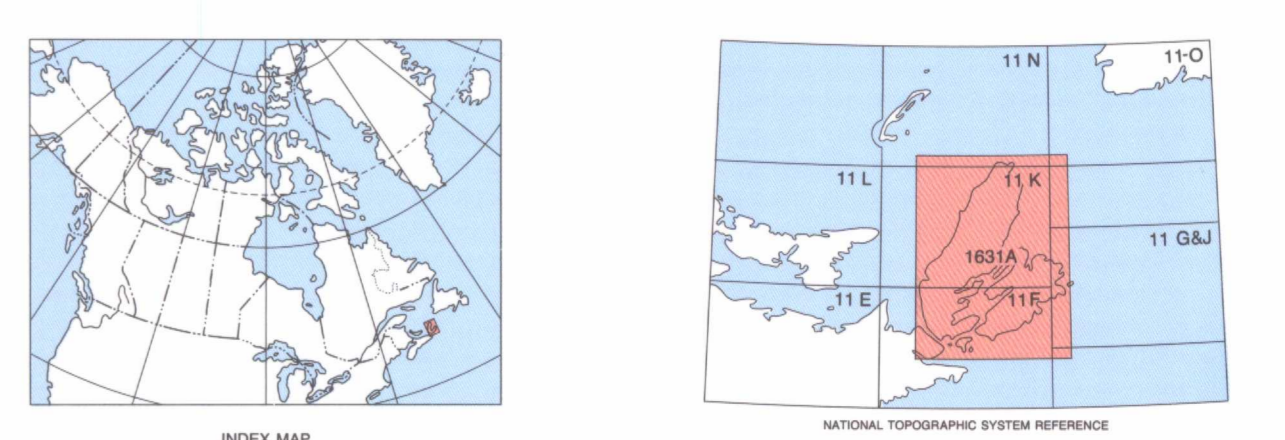
Elevation in feet above mean sea level

Bathymetry by Canadian Hydrographic Service, Department of Fisheries and Oceans.
Bathymetric contours in metres



MAP 1631A
SURFICIAL GEOLOGY
CAPE BRETON ISLAND
NOVA SCOTIA

Scale 1:125 000 - Echelle 1/125 000
Kilometres 0 10 20 Kilometres
Universal Transverse Mercator Projection
Projection nationale universelle de Métrieur
© Crown Copyright reserved © Droits de la Couronne réservés



NOT TO BE TAKEN FROM LIBRARY
NE PAS SORTIR DE LA BIBLIOTHÈQUE

1631A 2012 52