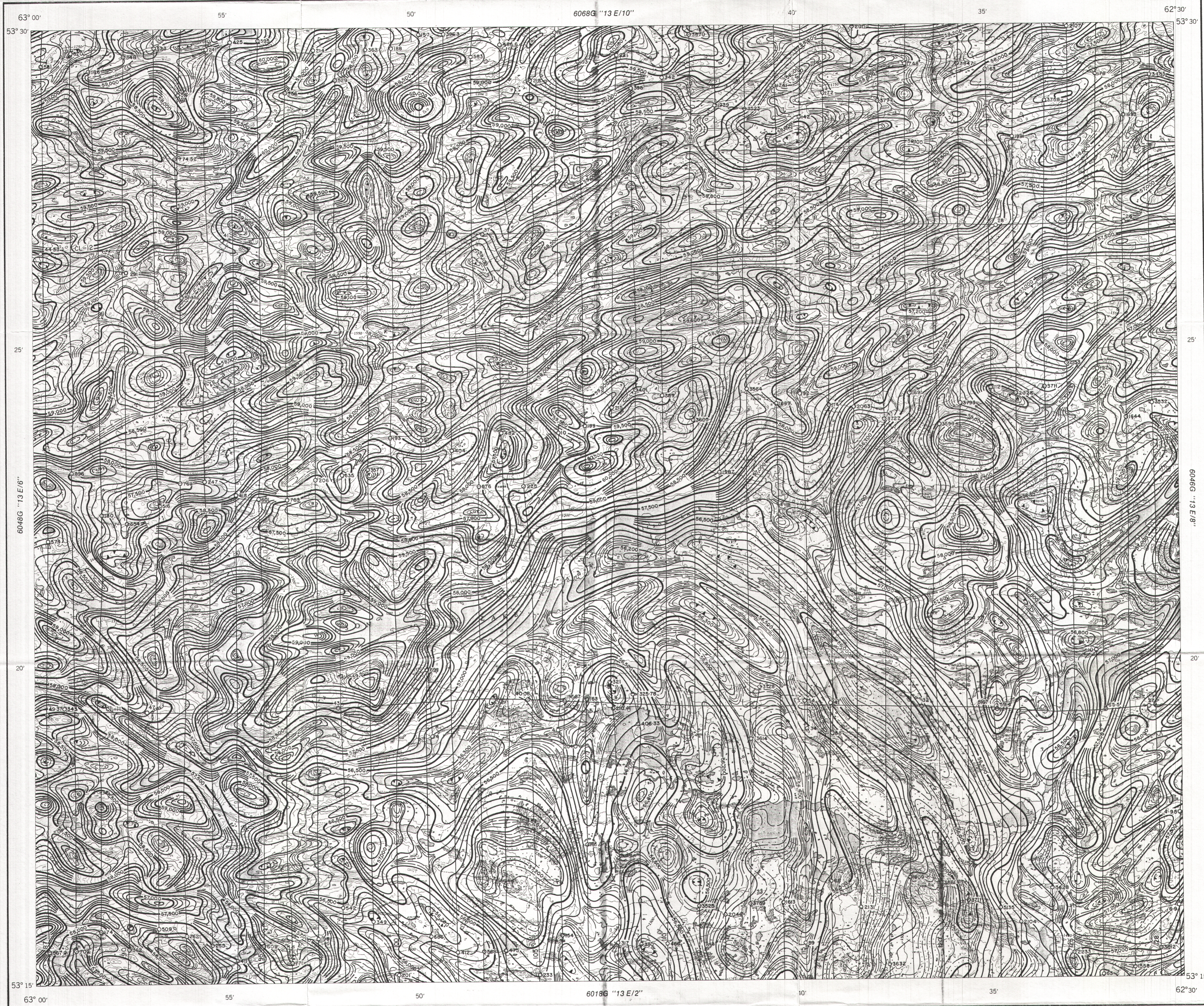


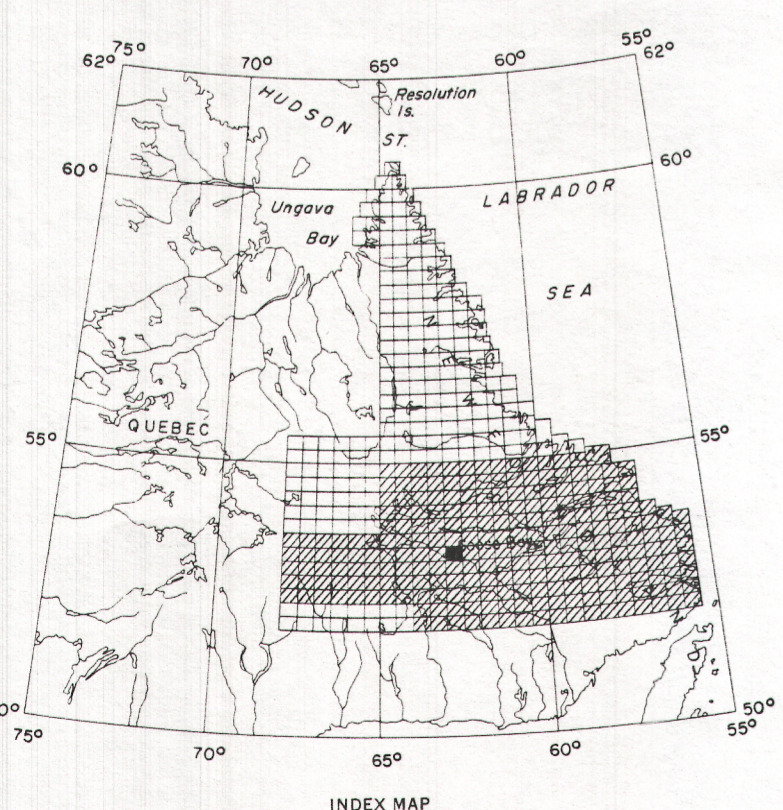
GEOLOGICAL SURVEY OF CANADA
DEPARTMENT OF ENERGY, MINES AND RESOURCES

GEOPHYSICAL SERIES (Aeromagnetic)

SHEET 13 ^E/₇



6047G
G
3401
.C93
1948-
G4
CMVSC



ISOMAGNETIC LINES (absolute total field)

500 gammas

100 gammas

20 gammas

10 gammas

Magnetic depression

Flight lines

Flight altitude 1000 feet above ground level

MAP 6047G

WILSON LAKE
NEWFOUNDLAND

Scale: One Inch to One Mile = $\frac{1}{63,360}$



COPIES OF THIS MAP MAY BE OBTAINED FROM THE DIRECTOR, GEOLOGICAL SURVEY OF CANADA, OTTAWA.

Airborne magnetic survey, June 1971 to August 1971 by Survair Ltd., Geotrex Ltd., Lockwood Survey Corporation Ltd.

No correction has been made for regional variation.

The topography for this map was reproduced from 1:50,000 topographical map sheets, published by the Department of Energy, Mines and Resources, Ottawa.

MAP 6047G
WILSON LAKE
NEWFOUNDLAND
SHEET 13 ^E/₇

PUBLISHED 1974

612caj

