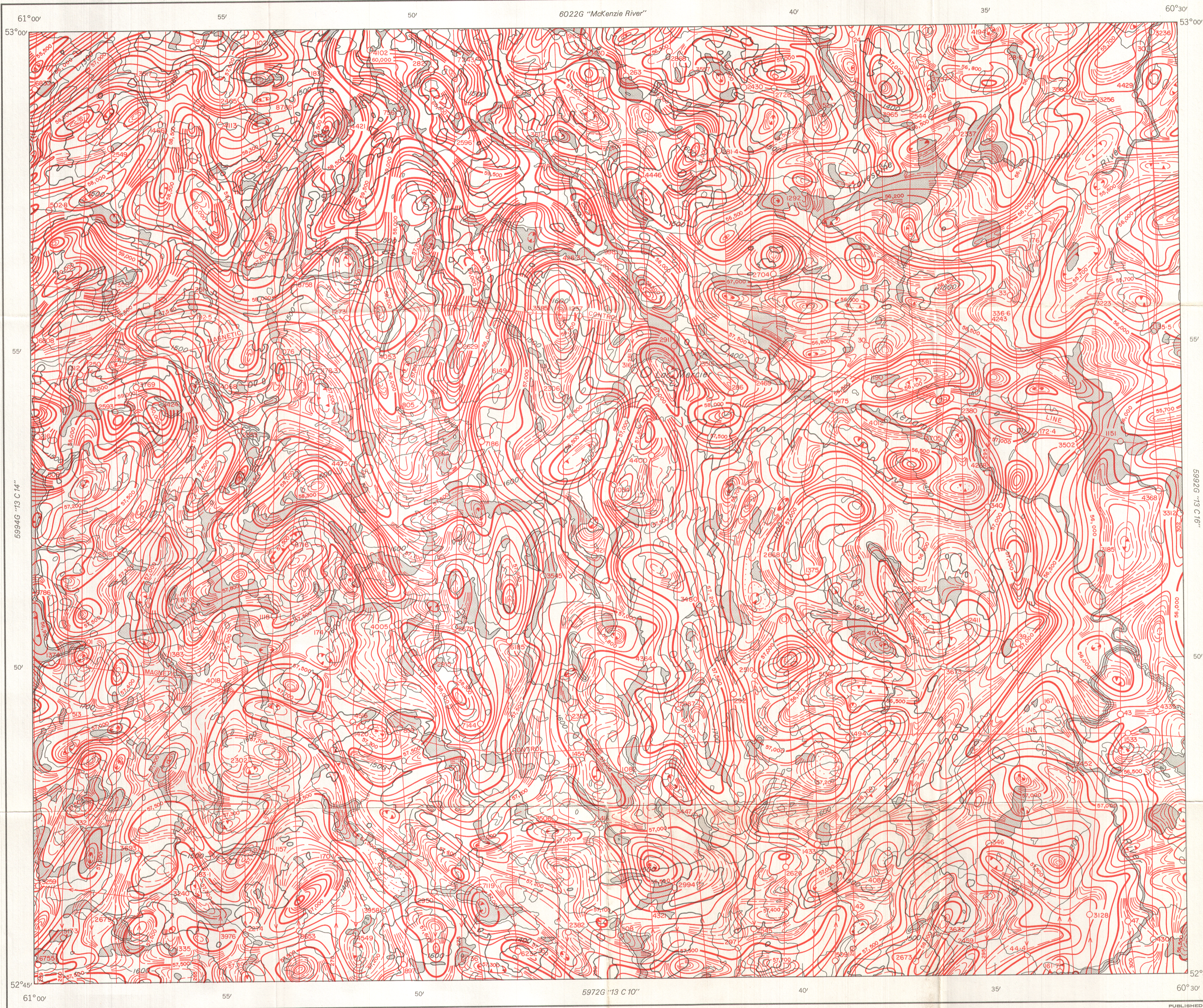


GEOLOGICAL SURVEY OF CANADA
DEPARTMENT OF ENERGY, MINES AND RESOURCES

SHEET 13 C 15

GEOPHYSICAL SERIES (Aeromagnetic)

6022G "McKenzie River"

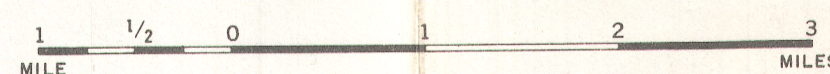


MAP 5993G

13 C 15

NEWFOUNDLAND

Scale: One Inch to One Mile = $\frac{1}{63,360}$



COPIES OF THIS MAP MAY BE OBTAINED FROM THE DIRECTOR, GEOLOGICAL SURVEY OF CANADA, OTTAWA.

ISOMAGNETIC LINES (absolute total field)

- 500 gammas
- 100 gammas
- 20 gammas
- 10 gammas
- Magnetic depression
- Flight lines
- Flight altitude 1000 feet above ground level

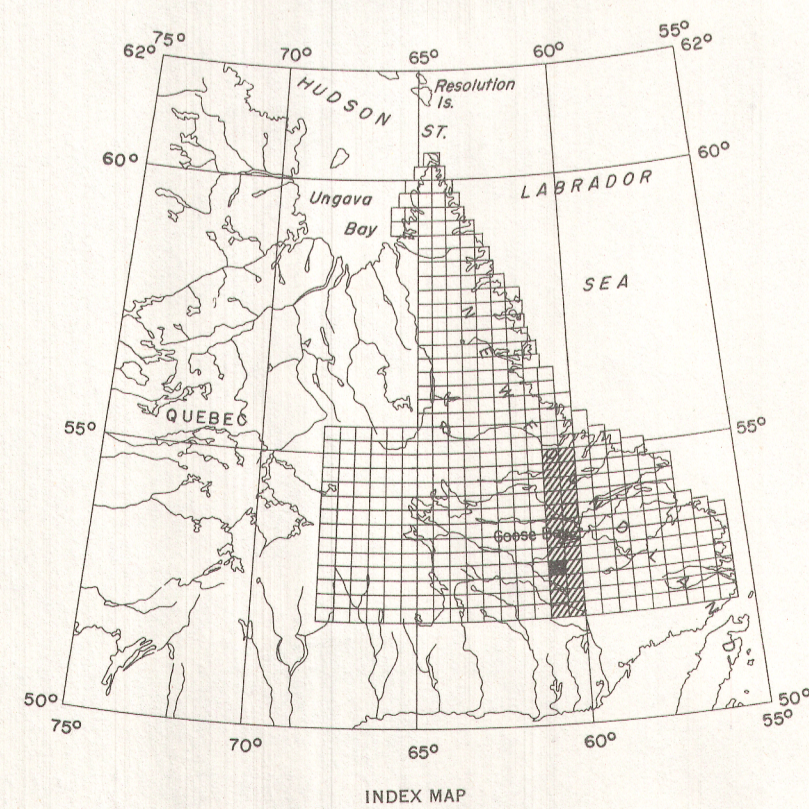
Airborne magnetic survey, August 1969 to July 1970 by Survair Ltd., Geotrex Ltd., Lockwood Survey Corporation Ltd.

No correction has been made for regional variation.

Base-map obtained from advance information supplied by the Surveys and Mapping Branch, Department of Energy, Mines and Resources, Ottawa.

The magnetic data on this map were compiled from information recorded along the flight lines shown. The anomalies expressed by the magnetic contours are dependent on the variable magnetic intensities of the underlying rocks, and may be due to conditions near, or at unknown depths below the surface. High magnetic anomalies normally indicate the presence of basic rocks, such as diabase, gabbro, or serpentinite, which have a relatively high iron content, but in special instances may be due, or partly due, to concentrations of magnetic minerals. By means of the magnetic anomalies, various rock bodies or structural features, such as faults or folds, may be traced into, or across, areas of few or no outcrops. In many instances, however, no interpretation of particular anomalies may be possible without further geological information.

MAP 5993G
NEWFOUNDLAND
SHEET 13 C 15



INDEX MAP

PUBLISHED 1970