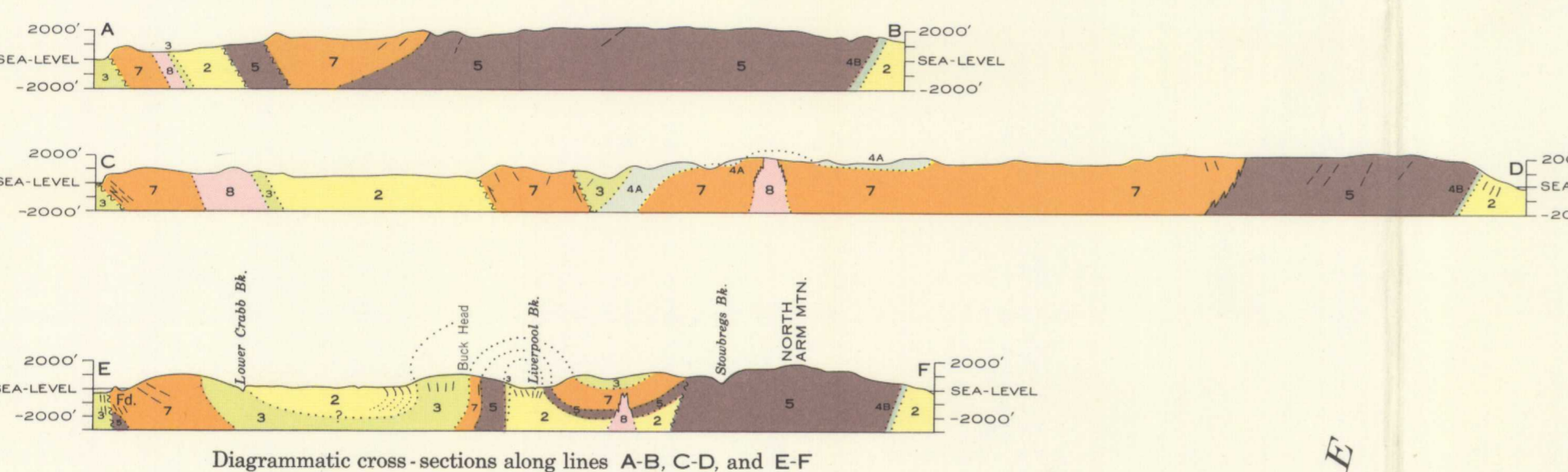
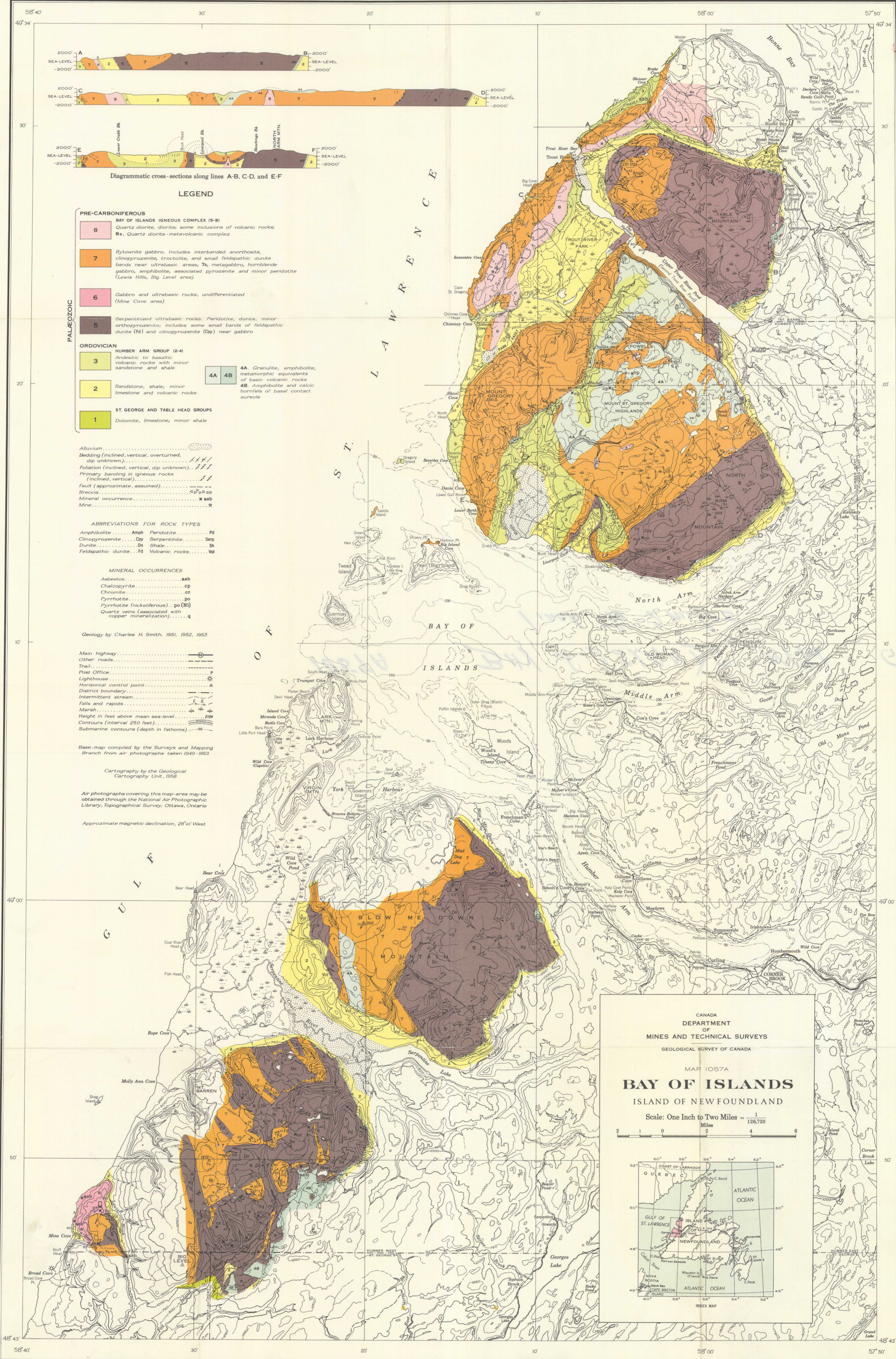


1057A



Diagrammatic cross-sections along lines A-B, C-D, and E-F

LEGEND

- PRE-CARBONIFEROUS**
- 8** BAY OF ISLANDS IGNEOUS COMPLEX (5-8)
Quartz diorite, diorite, some inclusions of volcanic rocks;
B_a, Quartz diorite-metavolcanic complex
 - 7** Biotite gabbro. Includes interbedded anorthosite,
clinopyroxene, troctolite, and small feldspathic dunite
bands near ultrabasic areas; 7a, metagabbro, hornblende
gabbro, amphibolite, associated pyroxenite and minor peridotite
(Lewis Hills, Big Level area)
 - 6** Gabbro and ultrabasic rocks, undifferentiated
(Mine Cove area)
 - 5** Serpentinized ultrabasic rocks. Peridotite, dunite, minor
orthopyroxenite, includes some small bands of feldspathic
dunite (fd) and clinopyroxenite (Cpy) near gabbro
- ORDOVICIAN**
- 3** HUMBER ARM GROUP (2-4)
Andesitic to basaltic
volcanic rocks with minor
sandstone and shale
 - 2** Sandstone, shale, minor
limestone and volcanic rocks
 - 4A** 4A. Granulite, amphibolite,
metamorphic equivalents
of basic volcanic rocks
 - 4B** 4B. Amphibolite and calcic
hornfels of basal contact
aureole
- ST. GEORGE AND TABLE HEAD GROUPS**
- 1** Dolomite, limestone, minor shale
- Other symbols:**
- Alluvium
 - Bedding (inclined, vertical, overturned,
dip unknown)
 - Foliation (inclined, vertical, dip unknown)
 - Primary banding in igneous rocks
(inclined, vertical)
 - Fault (approximate, assumed)
 - Breccia
 - Mineral occurrence
 - Mine
- ABBREVIATIONS FOR ROCK TYPES**
- Amphibolite Amph
 - Peridotite Pd
 - Clinopyroxenite Cpy
 - Serpentine Srp
 - Dunite Dn
 - Shale Sh
 - Feldspathic dunite Fd
 - Volcanic rocks Vol
- MINERAL OCCURRENCES**
- Asbestos aab
 - Chalcopyrite cp
 - Chromite ct
 - Pyrrhotite po
 - Pyrrhotite (nickeliferous) po(Ni)
 - Quartz veins (associated with
copper mineralization) q

Geology by Charles H. Smith, 1951, 1952, 1953

- Main highway
- Other roads
- Trail
- Post Office
- Lighthouse
- Horizontal control point
- District boundary
- Intermittent stream
- Falls and rapids
- Marsh
- Height in feet above mean sea-level
- Contours (interval 250 feet)
- Submarine contours (depth in fathoms)

Base-map compiled by the Surveys and Mapping Branch from air photographs taken 1949-1953

Cartography by the Geological Cartography Unit, 1958

Air photographs covering this map-area may be obtained through the National Air Photographic Library, Topographical Survey, Ottawa, Ontario

Approximate magnetic declination, 28°43' West

CANADA
DEPARTMENT
OF
MINES AND TECHNICAL SURVEYS
GEOLOGICAL SURVEY OF CANADA

MAP 1057A
BAY OF ISLANDS
ISLAND OF NEWFOUNDLAND

Scale: One Inch to Two Miles = $\frac{1}{128,720}$

NOT TO BE TAKEN FROM LIBRARY
NE PAS SUIRE DE LA BIBLIOTHÈQUE

1057A