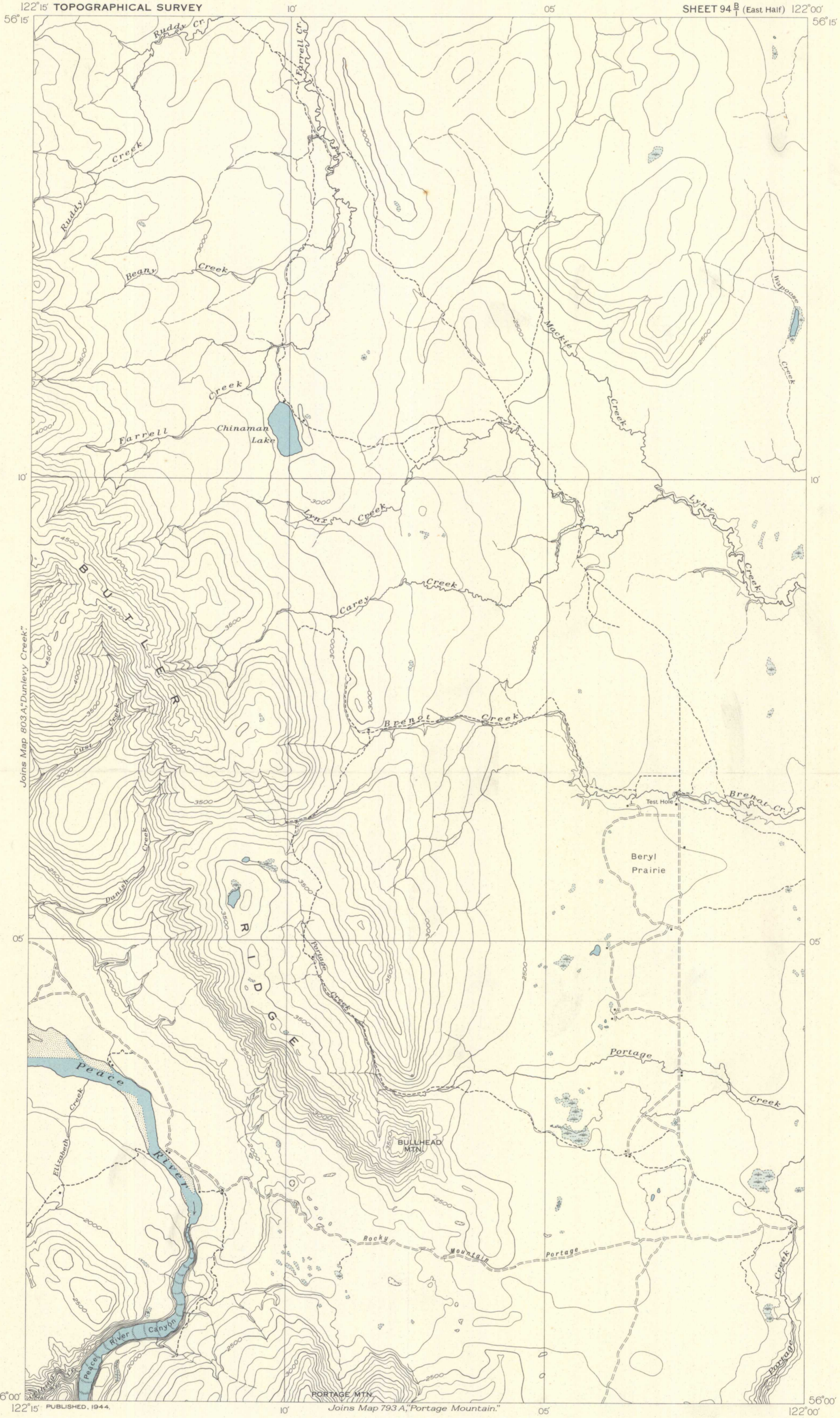


CANADA
DEPARTMENT OF MINES AND RESOURCES
MINES AND GEOLOGY BRANCH
BUREAU OF GEOLOGY AND TOPOGRAPHY



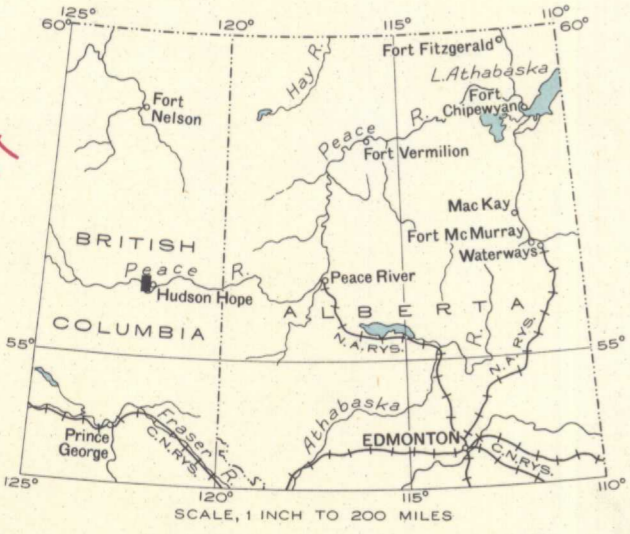
122°15' TOPOGRAPHICAL SURVEY

SHEET 94 B (East Half) 122°00'

56°00' 122°15' PUBLISHED, 1944.

10' Joins Map 793 A, "Portage Mountain." 05' 56°00' 122°00'

792A



MAP 792A
CHINAMAN LAKE
PEACE RIVER DISTRICT
BRITISH COLUMBIA

Scale, 1/31680 or 1 Inch to 1 Mile
Miles

Approximate magnetic declination, 30° East.

LEGEND

- Road not well travelled.....
- Trail.....
- Building.....
- Stream (position approximate).....
- Intermittent stream.....
- Rapids.....
- Marsh.....
- Sand or gravel.....
- Contours (interval 100 feet).....
- Depression contour.....

Compiled by the Topographical Survey, 1943, from original surveys and from air photographs taken in 1929, and 1939. Cartography by the Drafting and Reproducing Division, 1944.

NOT TO BE TAKEN FROM LIBRARY
NE PAS SORTIR DE LA BIBLIOTHEQUE

792A